





FILE NAME: A:\CONTRACTS\1000 - New Orleans - 04/10/2011 - Mechanical.dwg  
 PLOT DATE: 10/10/2011 10:26:24 AM  
 PLOT SCALE: 1/8" = 1'-0"  
 PLOT BY: BMM

A/C UNIT SCHEDULE					
TOTAL BTU	ELECTRICAL			COMMENTS	
	VOLTAGE	MCA	CKT BRKRS		
90,000 BTU (7.5 TON) AC #1	240V,3Ø	-	P1,-,-	NOTE: ALL A/C TO BE SPLIT-SYSTEM HVAC (TRANE OR EQUAL)	
90,000 BTU (7.5 TON) AC #2	240V,3Ø	-	P1,-,-		
90,000 BTU (7.5 TON) AC #3	240V,3Ø	-	P1,-,-		
90,000 BTU (7.5 TON) AC #4	240V,3Ø	-	P1,-,-		

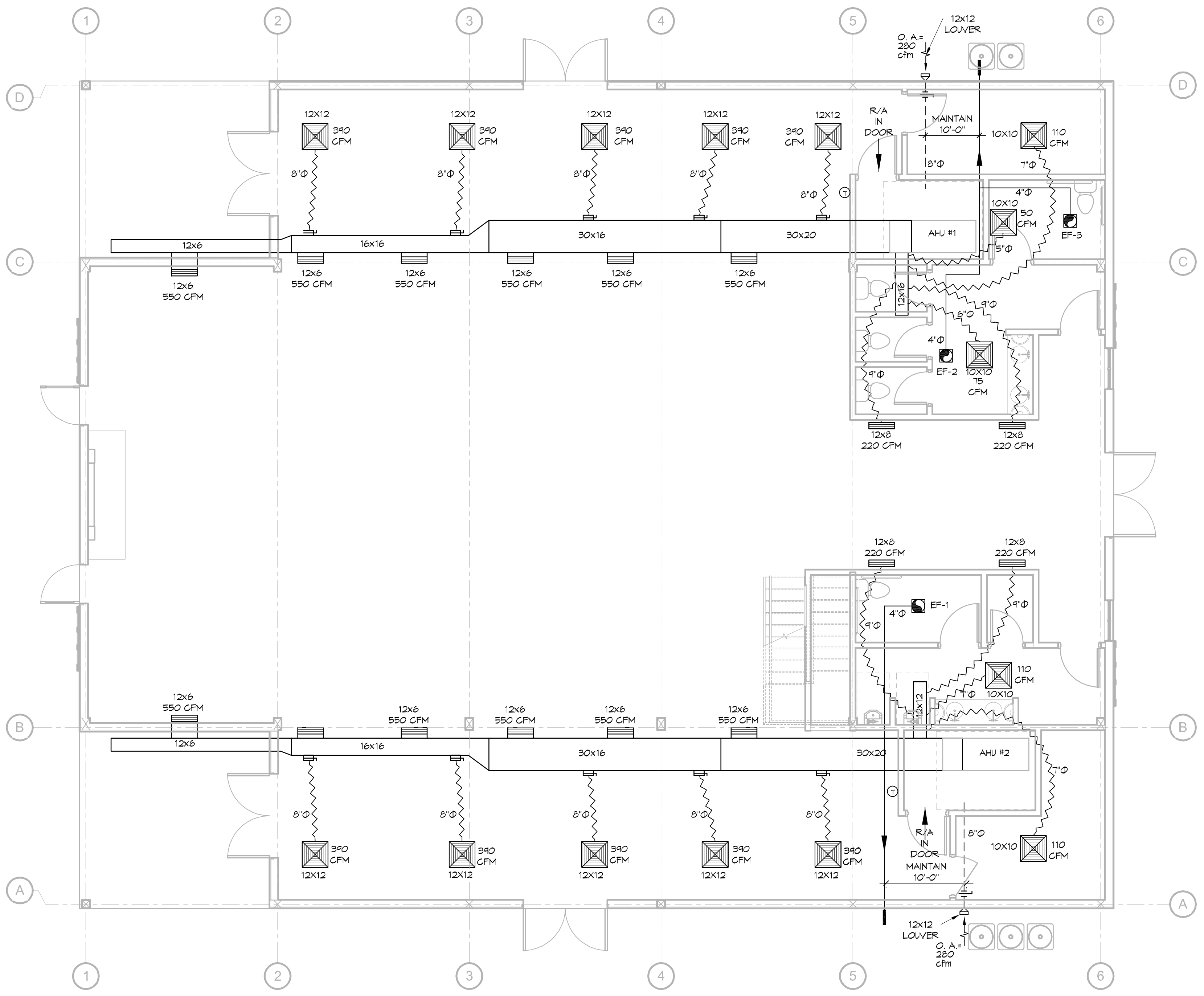
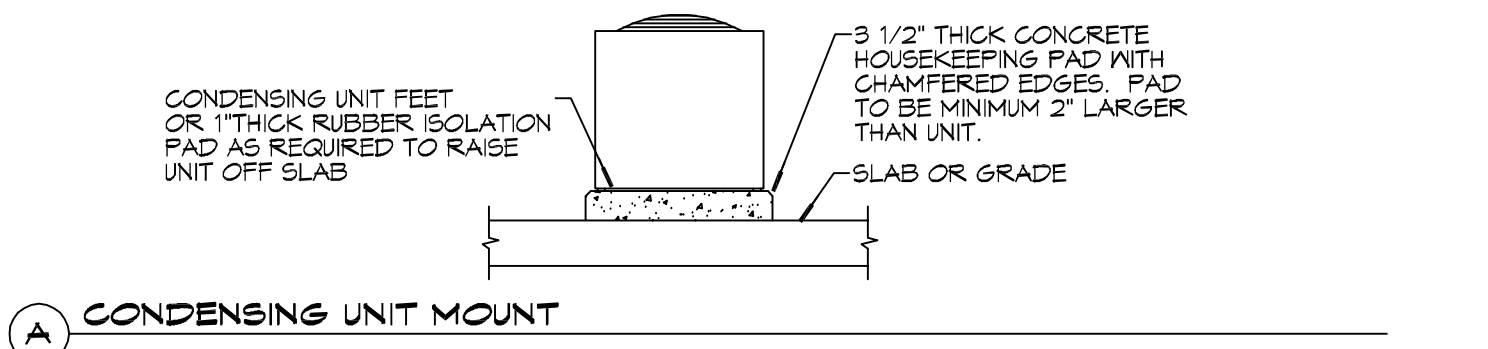
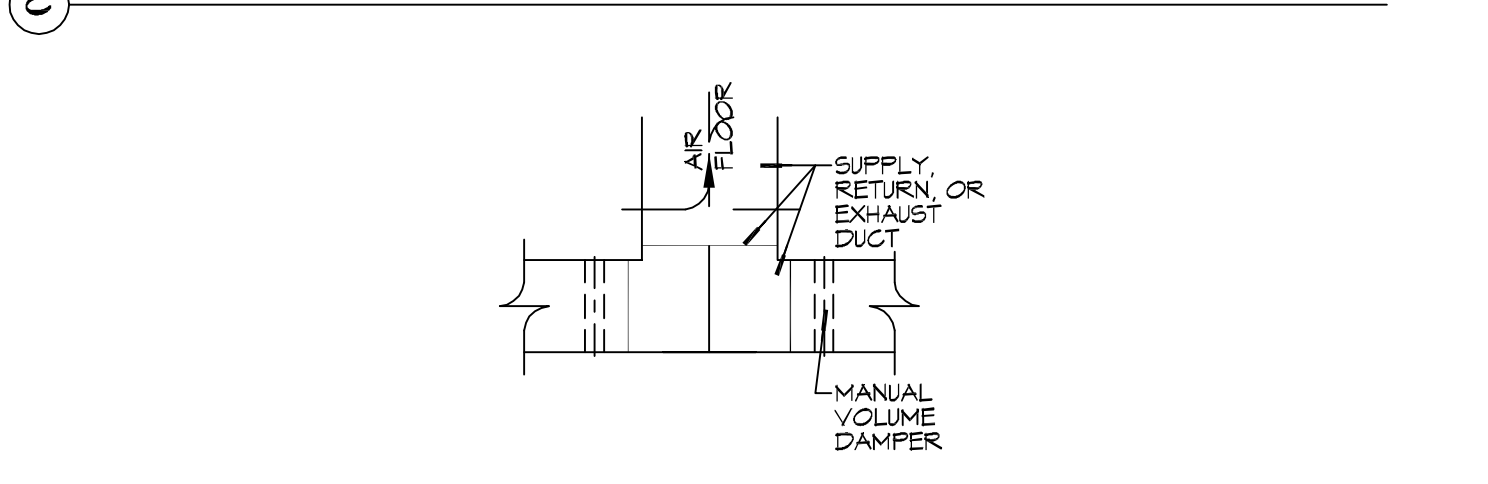
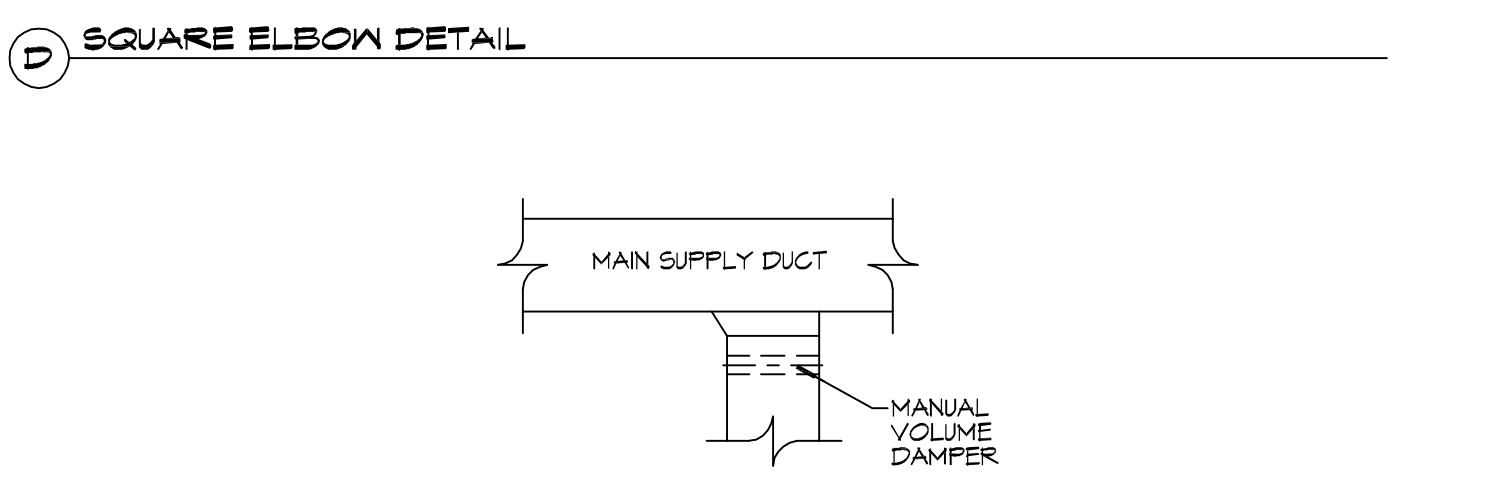
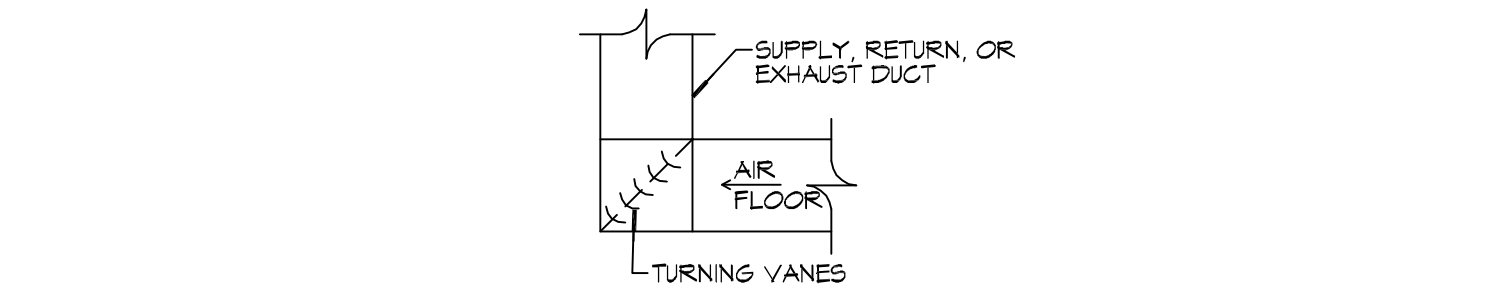
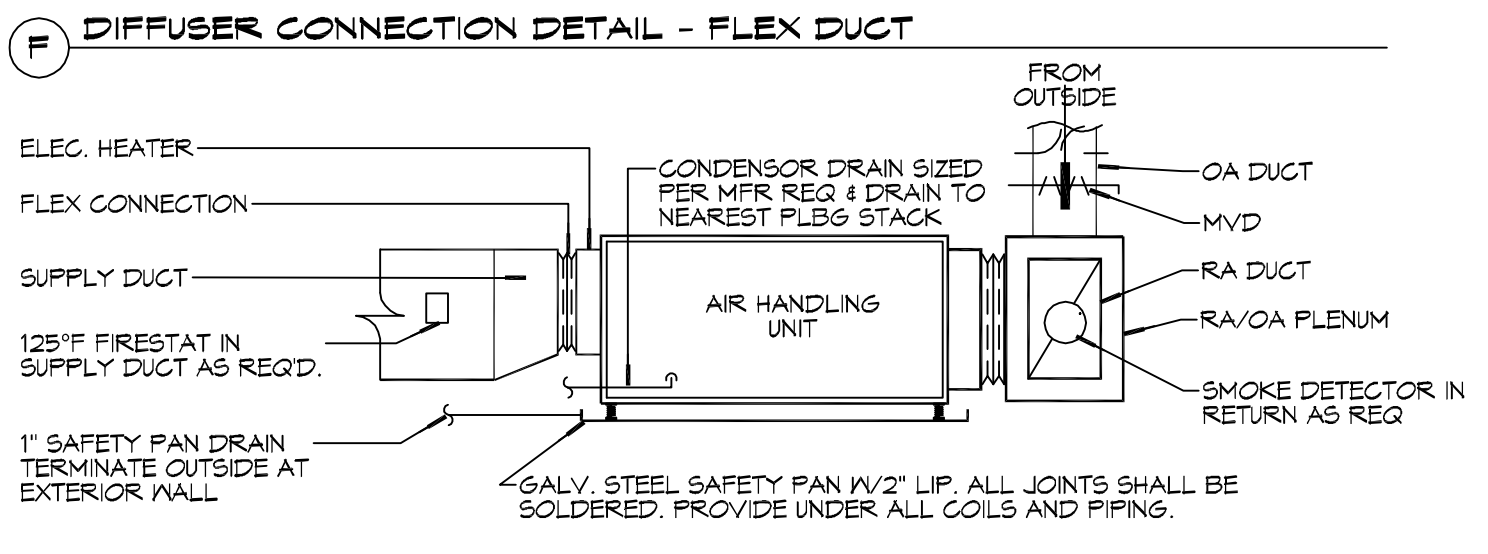
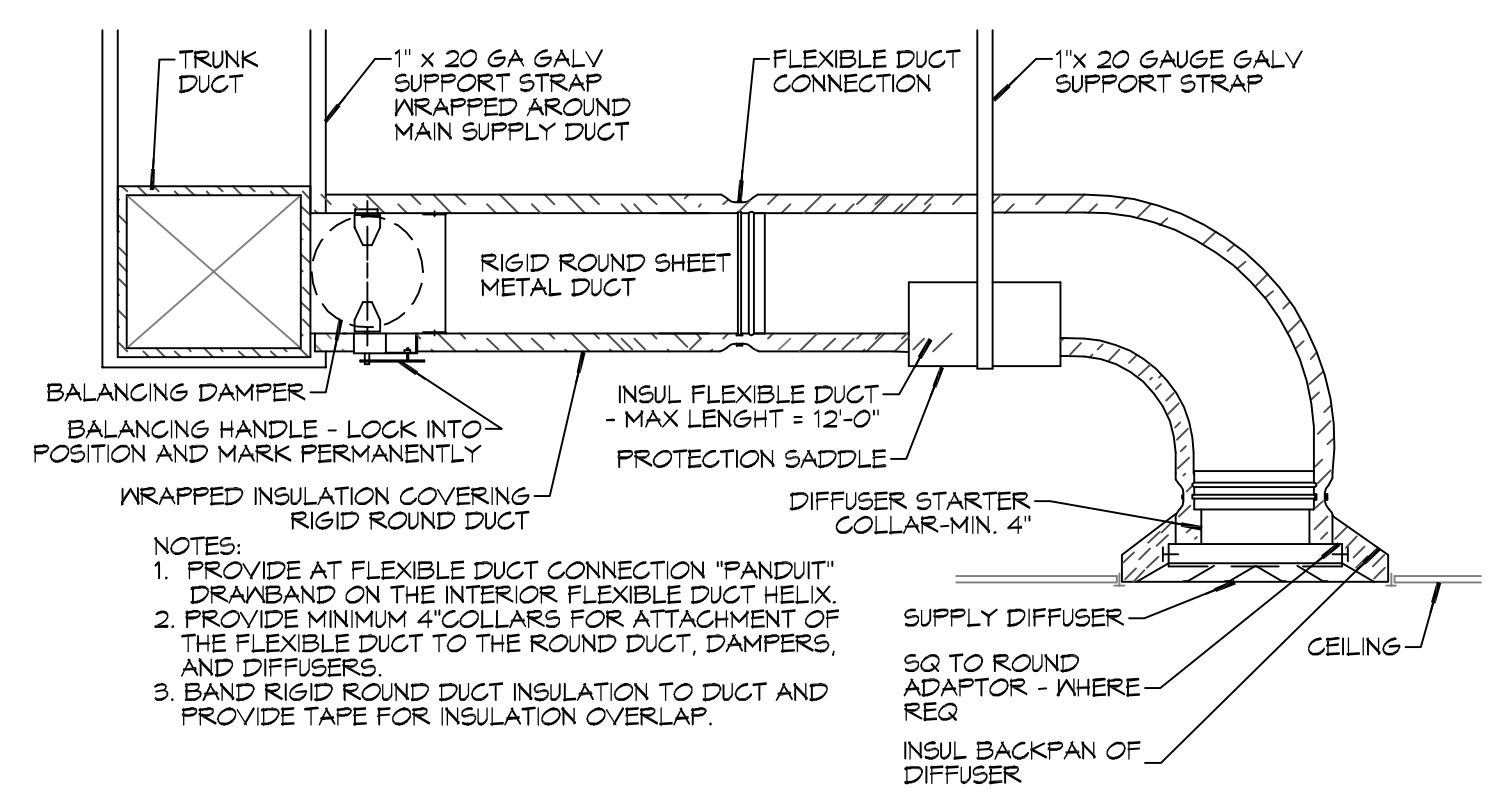
AHU UNIT SCHEDULE						
TOTAL BTU	CFM	O.A.	HEAT (KW)	ELECTRICAL		COMMENTS
				VOLTAGE	MCA	
180,000 (15 TON) AHU #1	6000	280	30	240V,3Ø	-	NOTE: ALL A/C TO BE SPLIT-SYSTEM HVAC (TRANE OR EQUAL)
180,000 (15 TON) AHU #2	6000	280	30	240V,3Ø	-	

EXHAUST FAN SCHEDULE					
EXHAUST	LOCATION	CFM	VOLTAGE	TYPE	MANUFACTURER
EF-1	TOILET	130	120	VENT	BROAN OR EQUAL
EF-2	TOILET	100	120	VENT	BROAN OR EQUAL
EF-3	TOILET	75	120	VENT	BROAN OR EQUAL

### GENERAL HVAC NOTES

- CONCEALED DUCTWORK TO BE GALVANIZED SHEET METAL LINED WITH FIBROUS GLASS DUCT LINER, MIN R-6. INSTALLED PER SMACNA STANDARDS.
- EXPOSED DUCTWORK TO BE GALVANIZED SHEET METAL LINED WITH FIBROUS GLASS DUCT LINER, MIN R-6. INSTALLED PER SMACNA STANDARDS.
- ROUND FLEXIBLE DUCT TO BE UL-181, CLASS 1, AIR DUCT MATERIALS. DUCT SIZES SHOWN ARE CLEAR INSIDE DIMENSIONS.
- IN ALL SYSTEMS OVER 2000 CFM AND LESS THAN 15,000 CFM, SMOKE DETECTORS SHALL BE INSTALLED IN ACCORDANCE WITH NFPA 72E IN THE RETURN DUCT DOWNSTREAM OF THE AIR HANDLING UNIT AND ALL FILTERS TO AUTOMATICALLY STOP THE FAN.
- PROVIDE UL LISTED 125°F FIRESTAT IN RETURN AIR OF EACH SYSTEM UNDER 2000 CFM TO SHUT DOWN THE FAN IN THE EVENT OF FIRE.
- PROVIDE UL RATED FIRE DAMPERS WHERE REQUIRED AT ALL DUCT PENETRATIONS OF FIRE-RATED ASSEMBLIES AND WHERE REQUIRED BY CODE, INCLUDING OUTSIDE AIR INTAKES AND EXHAUST FANS.
- CONDENSATE DRAINS TO BE PVC PIPE RUN TO PLUMBERS P-TRAP WITHIN FIVE FEET OF AIR HANDLING UNITS.
- ALL AIR HANDLING SYSTEMS TO BE BALANCED TO ASSURE PROPER AIR FLOWS PER PLANS.
- ALL THERMOSTATS TO BE AUTOMATIC CHANGEOVER WITH HEAT SWITCH.
- EXHAUST FAN SHALL BE CONTROLLED BY A SWITCH ON THE WALL IN THE SAME LOCATION AS LIGHT SWITCH(S). PROVIDE BACK DRAFT DAMPER.
- PROVIDE AND INSTALL WATER PROOF GRILLE VENT IN PROPER ROOF LOCATION FOR PLUMBING FIXTURE EXHAUST.
- ALL SUPPLY AIR VENTS SHALL BE EQUIPPED WITH AIR CONTROL DAMPERS AT THE REGISTER.
- LOCATE OUTDOOR UNITS AS SHOWN ON ARCHITECTURAL DRAWINGS.
- REFRIGERANT LINES SHALL BE SIZED BY UNIT MANUFACTURER AND INSTALLED ACCORDING TO MANUFACTURER'S INSTRUCTIONS.
- FRESH AIR SHALL BE SUPPLIED TO EACH AIR HANDLER THROUGH EXTERIOR WALL DUCT SUPPLIED WITH A CONTROL DAMPER.
- ALL ELECTRICAL, MECHANICAL, AND PLUMBING PENETRATING FIRE WALLS SHALL BE FIRE CAULKED. (PENETRATIONS THROUGH RATED CONSTRUCTION SHALL BE SEALED WITH A MATERIAL CAPABLE OF PREVENTING THE PASSAGE OF FLAMES AND HOT GASES WHEN TESTED IN ACCORDANCE WITH ASTM-E814).
- ALL MECHANICAL SYMBOLS ARE DRAWN DIAGRAMMATICALLY. CONTRACTOR TO VERIFY WITH OWNER LOCATIONS OF VENTS, DAMPERS, REGISTERS, ETC.
- FLEXIBLE DUCTWORK LENGTH NOT TO EXCEED 12'-0".
- REFER TO REFLECTED CEILING PLAN FOR FINAL GRILLE AND DIFFUSER LOCATIONS AND COORDINATE AS REQUIRED.
- FINAL LOCATION OF TEMPERATURE CONTROLS TO BE COORDINATED WITH OWNER AT JOB SITE.
- PROVIDE AND INSTALL SMOKE DETECTORS AS APPROVED BY LOCAL AHJ. PLACE NEAR R/A AND S/A OPENINGS OF AHU AND PROVIDE WITH ACCESS PANEL, WIRING BY ELECTRICAL CONTRACTOR.
- FRESH AIR INTAKES ARE REQUIRED TO HAVE MOTORIZED OR GRAVITY DAMPERS TO SHUT OFF WHEN SYSTEM IS NOT RUNNING.
- PROVIDE BIRD SCREENS AT ALL EXTERIOR MECHANICAL PENETRATIONS.
- COORDINATE WALL MOUNTED THERMOSTAT LOCATIONS WITH ALL OWNER FURNISHED ITEMS EITHER WALL MOUNTED OR FLOOR MOUNTED AGAINST PARTITIONS. REFER TO ARCHITECTURAL DRAWINGS.
- SEE ROOF PLAN FOR ALL ROOF PENETRATIONS.
- PROVIDE MIN 18 GA GALVANIZED SHEET METAL TO BLANK-OFF GABLE VENTS WHERE INTAKE/EXHAUST DUCTS OCCUR.

**DAMMON ENGINEERING, INC.**  
 LOUISIANA & MISSISSIPPI  
 Chief Engineer: Brian March, PE  
 554 Old Spanish Trail  
 Slidell, LA 70458  
 www.dammonengineering.com  
 info@dammonengineering.com  
 PH: 985.649.8822



### LEGEND

- SUPPLY AIR GRILLE
- EXHAUST FAN
- THERMOSTAT
- SUPPLY AIR DUCT
- FRESH AIR DUCT
- DAMPER CONTROL
- ROUND FLEX DUCT, MAX LENGTH 12'-0", MIN. R-6. PROVIDE MAN. DAMPER AT DIFFUSER CONNECTIONS. DUCT SIZE AS FOLLOWS:  
 250 CFM TO 350 CFM = 8"  
 300 CFM TO 250 CFM = 8"  
 150 CFM TO 200 CFM = 6"  
 100 CFM TO 150 CFM = 6"

**2DETAILS**  
SCALE: NTS

**1MECHANICAL FLOOR PLAN**  
SCALE: 3/16"=1'-0"

DATE	REVISIONS	DESCRIPTION



**NEW BUILDING**  
**PINEWOOD AVENUE**  
 405 COUNTRY CLUB BLVD.  
 SLIDELL, LA 70458  
 JOB No: 2324 DATE: 11-10-17  
 DRAWN BY: CJD CHECKED BY: BMM

SHEET TITLE:  
MECHANICAL FLOOR PLAN, SCHEDULES AND DETAILS

DRAWING NUMBER:

**M101**

