

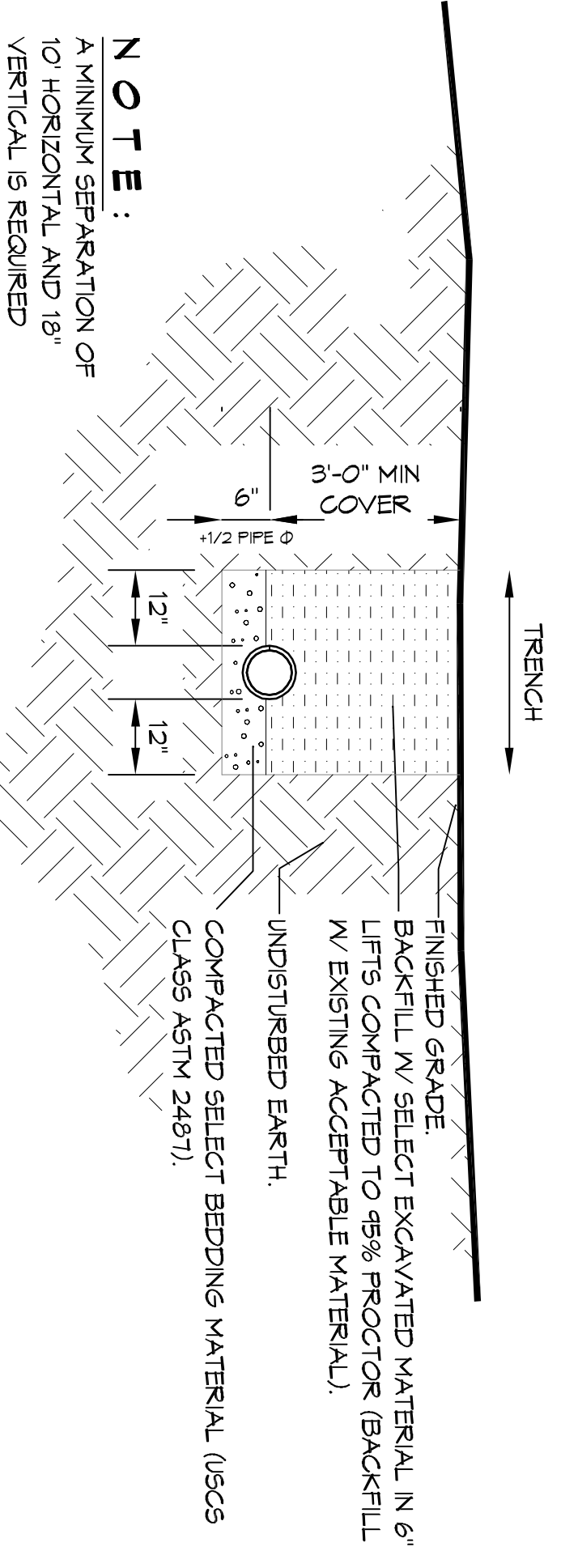
1 SITE UTILITY PLAN  
SCALE: 1/32"=1'-0"

**GENERAL SITE NOTES**

1. PROVIDE ALL LABOR, MATERIAL, AND EQUIPMENT FOR A COMPLETE OPERATING SYSTEM. CONTRACTOR IS TO FIELD VERIFY ALL EXISTING UTILITY LOCATIONS, ELEVATIONS, AND INVERTS PRIOR TO COMMENCING ANY WORK. CONTRACTOR SHALL PAY NECESSARY FEES FOR THE UTILITIES CONNECTIONS.
2. CONTRACTOR TO BE RESPONSIBLE TO VERIFY ANY INVERTS AND SET NEW INVERTS OF SEWAGE AND DRAINAGE PIPES.
3. ALL WORK AND MATERIAL TO COMPLY STRICTLY TO THE LATEST LOCAL CITY PARISH, STATE, AND NATIONAL GOVERNING CODES.
4. SEWAGE LINES 3" AND SMALLER SHALL BE SLOPED 1/4" PER FOOT AND LINES THAT ARE 4" AND LARGER SHALL BE SLOPED 1/8" PER FOOT.
10. CONTRACTOR SHALL CONTACT LOUISIANA ONE CALL PRIOR TO COMMENCEMENT OF SITE EXCAVATION.

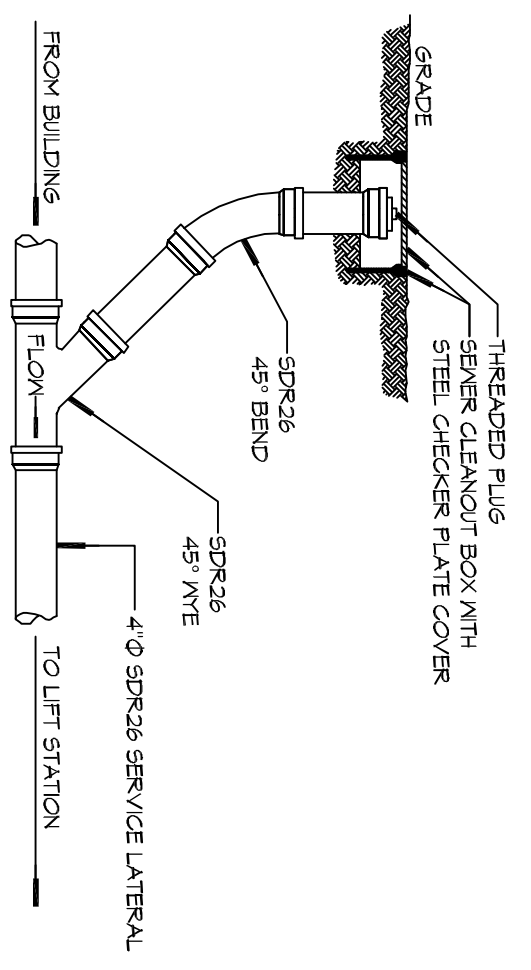
**SITE UTILITIES LEGS**

- W — NEW WATER LINE
- S — NEW SEWER LINE
- E — NEW ELECTRICAL LINE

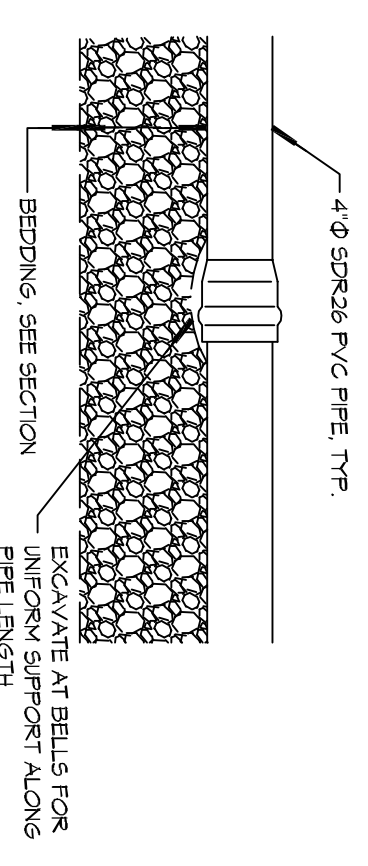


**NOTE:**  
A MINIMUM SEPARATION OF 10' HORIZONTAL AND 18" VERTICAL IS REQUIRED BETWEEN WATER AND SEWER LINES

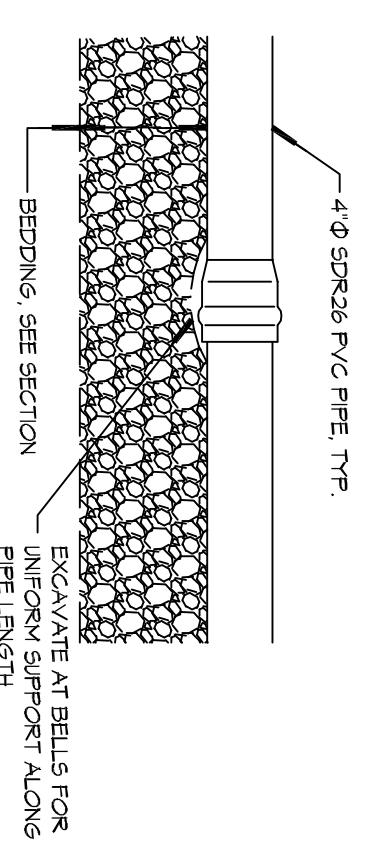
**2 DETAIL**  
SCALE: N.T.S.  
SEWER AND WATER SEPARATION



**3 DETAIL**  
SCALE: N.T.S.  
SEWER CLEAN OUT



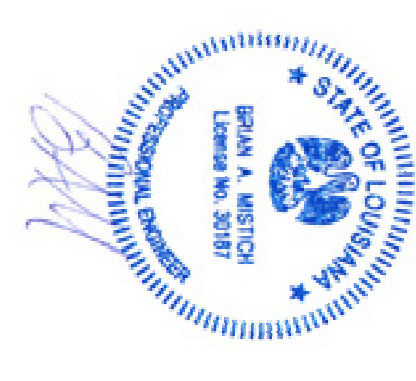
**4 DETAIL**  
SCALE: N.T.S.  
TYPICAL PIPE BEDDINGS



**DAMMON ENGINEERING, INC.**  
LOUISIANA & MISSISSIPPI

Chief Engineer: Brian Mistich, PE  
554 Old Spanish Trail  
Slidell, LA 70458  
www.dammonengineering.com  
info@dammonengineering.com  
PH: 985.649.5832

| REVISIONS |             | DATE |
|-----------|-------------|------|
| #         | DESCRIPTION |      |
|           |             |      |
|           |             |      |
|           |             |      |
|           |             |      |
|           |             |      |
|           |             |      |
|           |             |      |
|           |             |      |
|           |             |      |



**NEW BUILDING**  
**WINEWOOD WEDDING VENUE**  
405 COUNTRY CLUB BLVD.  
SLIDELL LA, 70458

JOB No: 2329 DATE: 12-04-17  
DRAWN BY: CKD CHECKED BY: CKD

The above drawings are prepared, designed and engineered exclusively for the use of the client and shall remain the property of Dammon Engineering, and no part thereof shall be copied, reproduced, or transmitted in any form or by any means, electronic, mechanical, photocopying, recording, or by any information storage and retrieval system, without written consent of Dammon Engineering. Your contact with these drawings or specifications shall constitute your agreement to these terms and conditions.

SHEET TITLE:  
SITE UTILITY PLAN

DRAWING NUMBER:  
**C102**

SHEET No. 2 of 5