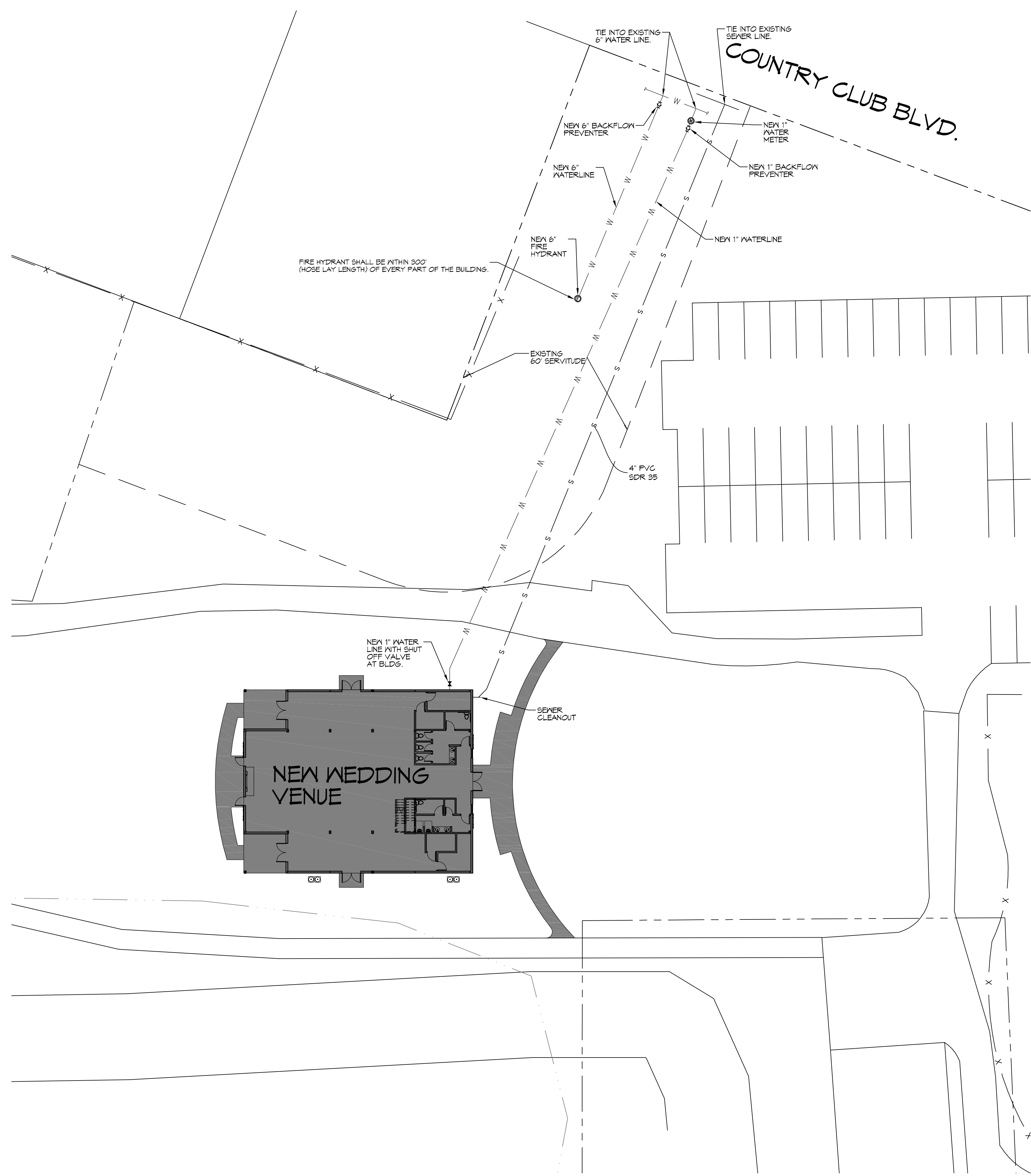


FILE NAME: J:_Commodore\323 - New Wedding Venue\General\Drawings\C102 - Site Utilities.dwg PLOT DATE: 01/20/11 3:05:11 PM



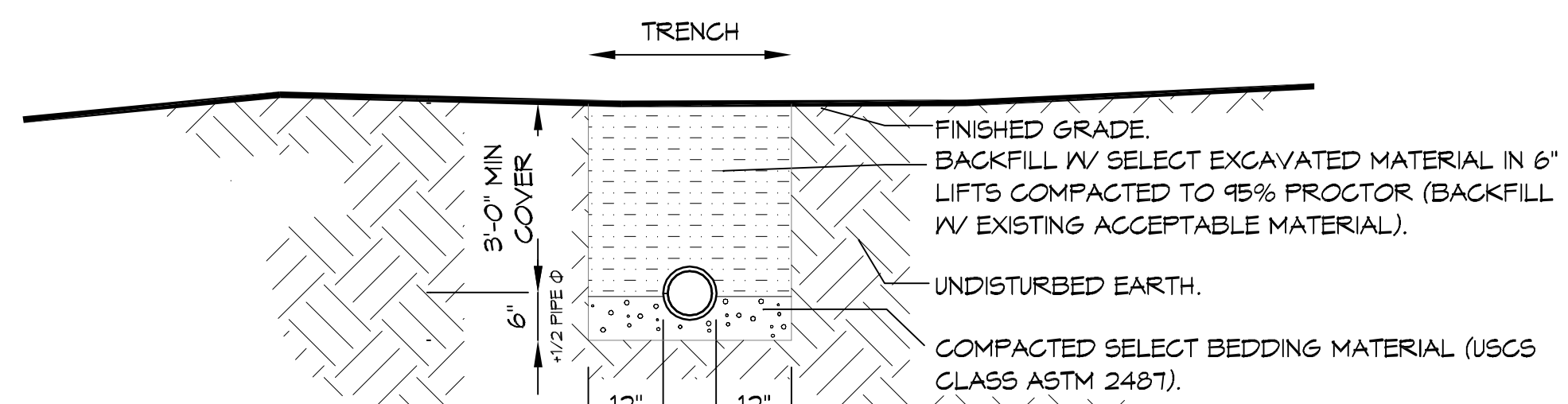
NOTE:
1. FOR SEWER AND WATER TIE-INS CALL BILLY PALMISANO WITH THE CITY OF SLIDELL PUBLIC UTILITY DEPARTMENT @ 985-646-4211.

GENERAL SITE NOTES

1. PROVIDE ALL LABOR, MATERIAL AND EQUIPMENT FOR A COMPLETE OPERATING SYSTEM. CONTRACTOR IS TO FIELD VERIFY ALL EXISTING UTILITY LOCATIONS, ELEVATIONS, AND INVERTS PRIOR TO COMMENCING ANY WORK. CONTRACTOR SHALL PAY NECESSARY FEES FOR THE UTILITIES CONNECTIONS.
2. CONTRACTOR TO BE RESPONSIBLE TO VERIFY ANY INVERTS AND SET NEW INVERTS OF SEWAGE AND DRAINAGE PIPES.
3. ALL WORK AND MATERIAL TO COMPLY STRICTLY TO THE LATEST LOCAL CITY PARISH, STATE, AND NATIONAL GOVERNING CODES.
4. SEWAGE LINES 3" AND SMALLER SHALL BE SLOPED 1/4" PER FOOT AND LINES THAT ARE 4" AND LARGER SHALL BE SLOPED 1/8" PER FOOT.
10. CONTRACTOR SHALL CONTACT LOUISIANA ONE CALL PRIOR TO COMMENCEMENT OF SITE EXCAVATION.

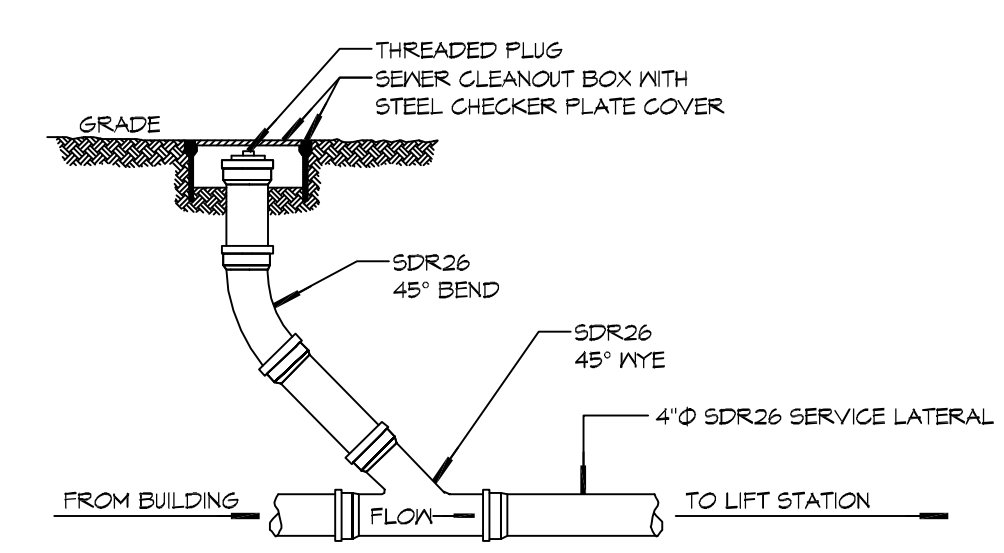
SITE UTILITIES LEG

— W — NEW WATER LINE
— S — NEW SEWER LINE
— P — NEW ELECTRICAL LINE

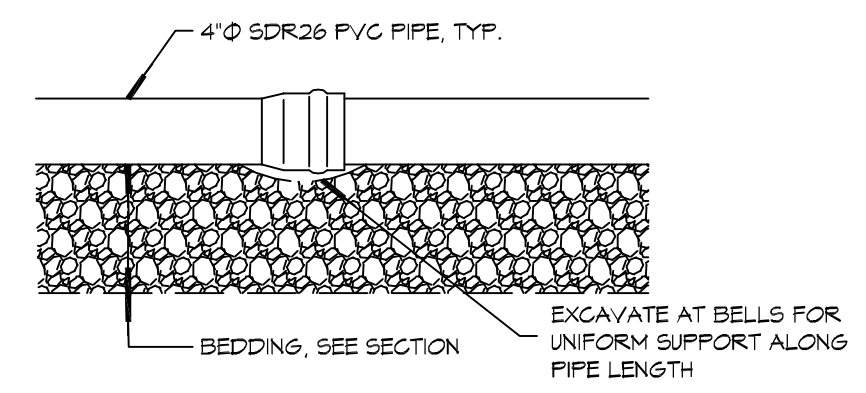


NOTE:
A MINIMUM SEPARATION OF 10' HORIZONTAL AND 18" VERTICAL IS REQUIRED BETWEEN WATER AND SEWER LINES

2 DETAIL
SCALE: N.T.S. SEWER AND WATER SEPARATION



3 DETAIL
SCALE: N.T.S. SEWER CLEAN OUT



4 DETAIL
SCALE: N.T.S. TYPICAL PIPE BEDDING

DAMMON ENGINEERING, INC.
LOUISIANA & MISSISSIPPI
Chief Engineer: Brian Mistich, PE
www.dammonengineering.com
info@dammonengineering.com
554 Old Spanish Trail
Slidell, LA 70488
PH: 985.649.9832

#	DESCRIPTION	REVISIONS	DATE



NEW BUILDING
PINEDOOD VENUE
405 COUNTRY CLUB BLVD.
SLIDELL, LA 70489
JOB No: 2291 DATE: 01/20/11
DRAWN BY: C&D CHECKED BY: C&D

SHEET TITLE:
SITE UTILITY PLAN

DRAWING NUMBER:
C102

SHEET No: 2 of 2

1 SITE UTILITY PLAN
SCALE: 1"=20'-0"