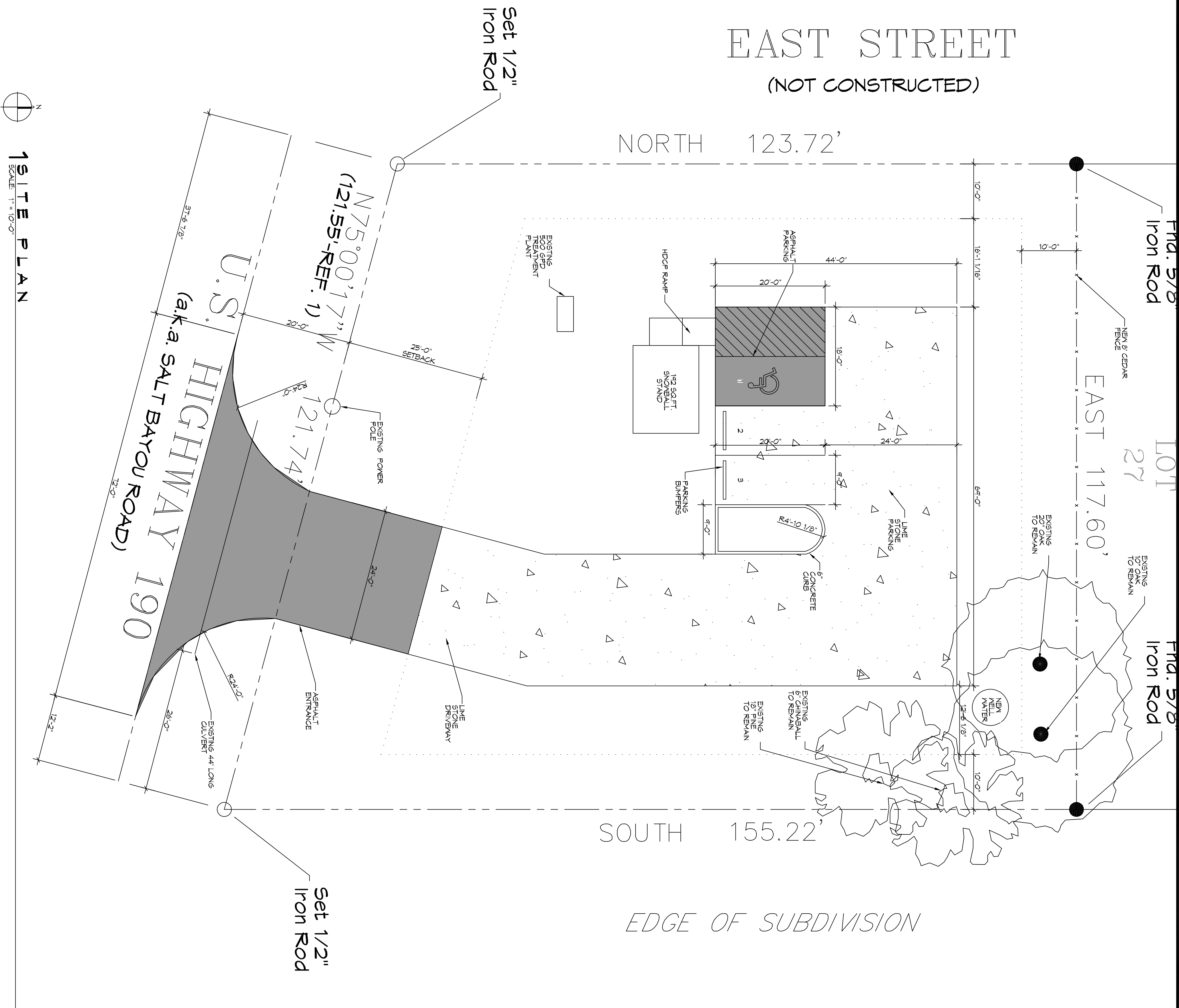


# EAST STREET

(NOT CONSTRUCTED)



1 SITE PLAN  
SCALE: 1" = 10'-0"

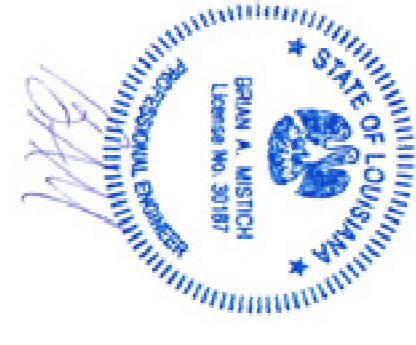
<b>PLANNING</b>
LOT 28 - 31 SQ. FT. ZONED HIGHWAY COMMERCIAL
<b>FLOOD ZONE</b>
ZONE 'C'
<b>BUILDING ELEVATION</b>
BASE FLOOD ELEVATION = 0 BFE = N/A FINISHED FLOOR ELEVATION = 12" ABOVE NATURAL GRADE
<b>PARKING</b>
RETAIL: 1 SPACE PER EACH 350 SQ. FT. OF GROSS FLOOR AREA EXCLUDING STORAGE AREAS WHICH SHALL NOT EXCEED 15 PERCENT OF THE GROSS AREA. 182 / 350 = 1 REQUIRED TOTAL OF 9 PARKING SPACES PROVIDED

**DAMMON ENGINEERING, INC.**  
LOUISIANA & MISSISSIPPI

Chief Engineer: Brian Mistic, PE  
554 Old Spanish Trail  
Slidell, LA 70458

www.dammonengineering.com  
info@dammonengineering.com  
PH: 985.649.5832

REVISIONS	
#	DESCRIPTION



**ZACK'S SNACKS SNOWBALL STAND**

**M I S S I S S I O T T A**

LOTS 21-31  
U.S. HWY 190  
SLIDELL, LA

JOB No: 2382 DATE: 06-17-2019

DRAWN BY: GKD CHECKED BY: BAM

SHEET TITLE:  
SITE PLAN

DRAWING NUMBER:  
**C101**

SHEET No. 1 of 2