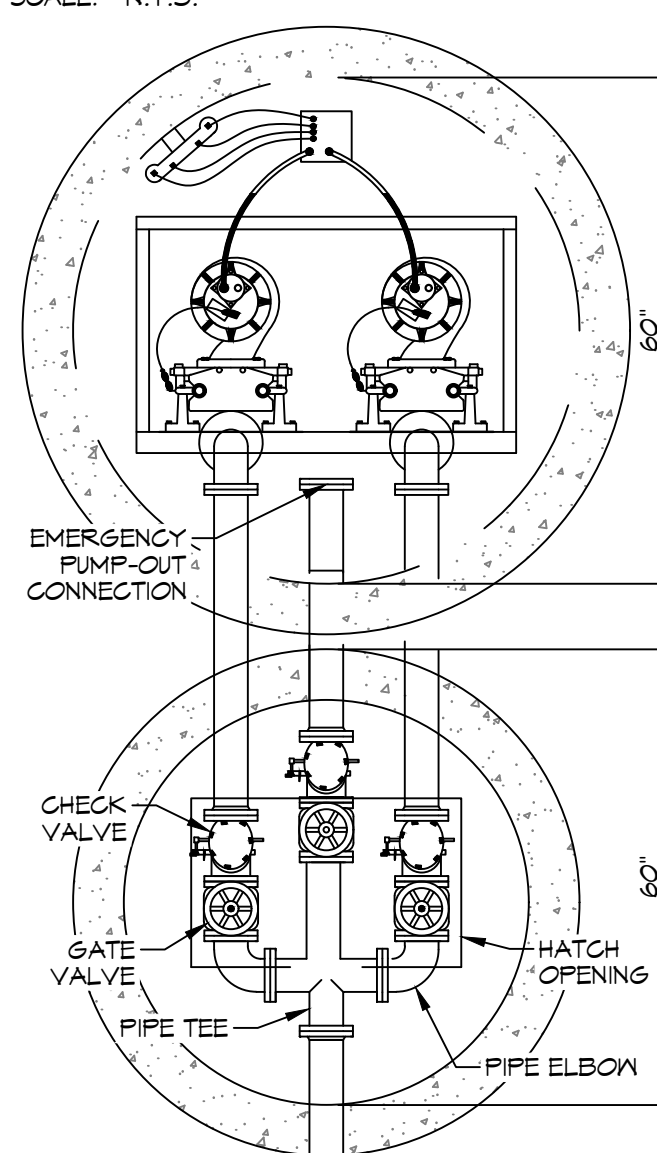
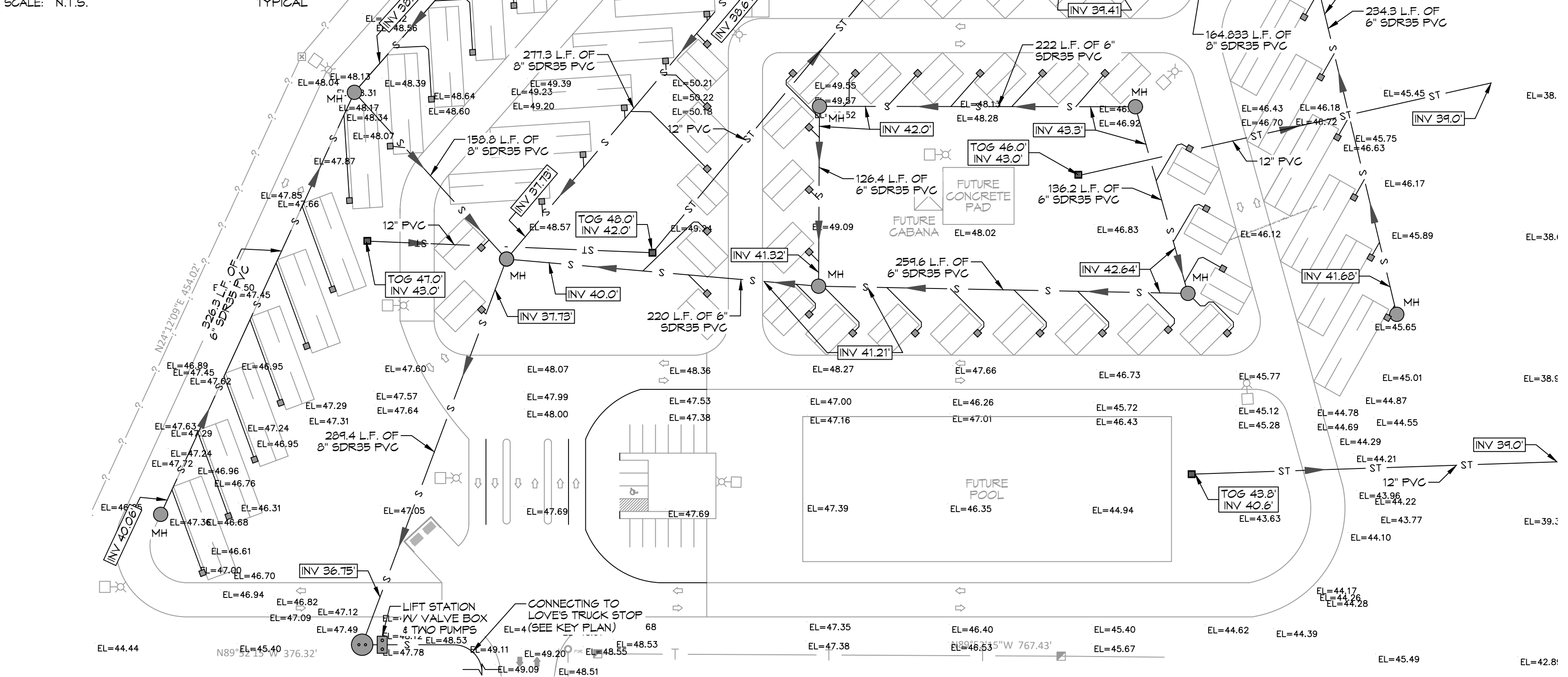


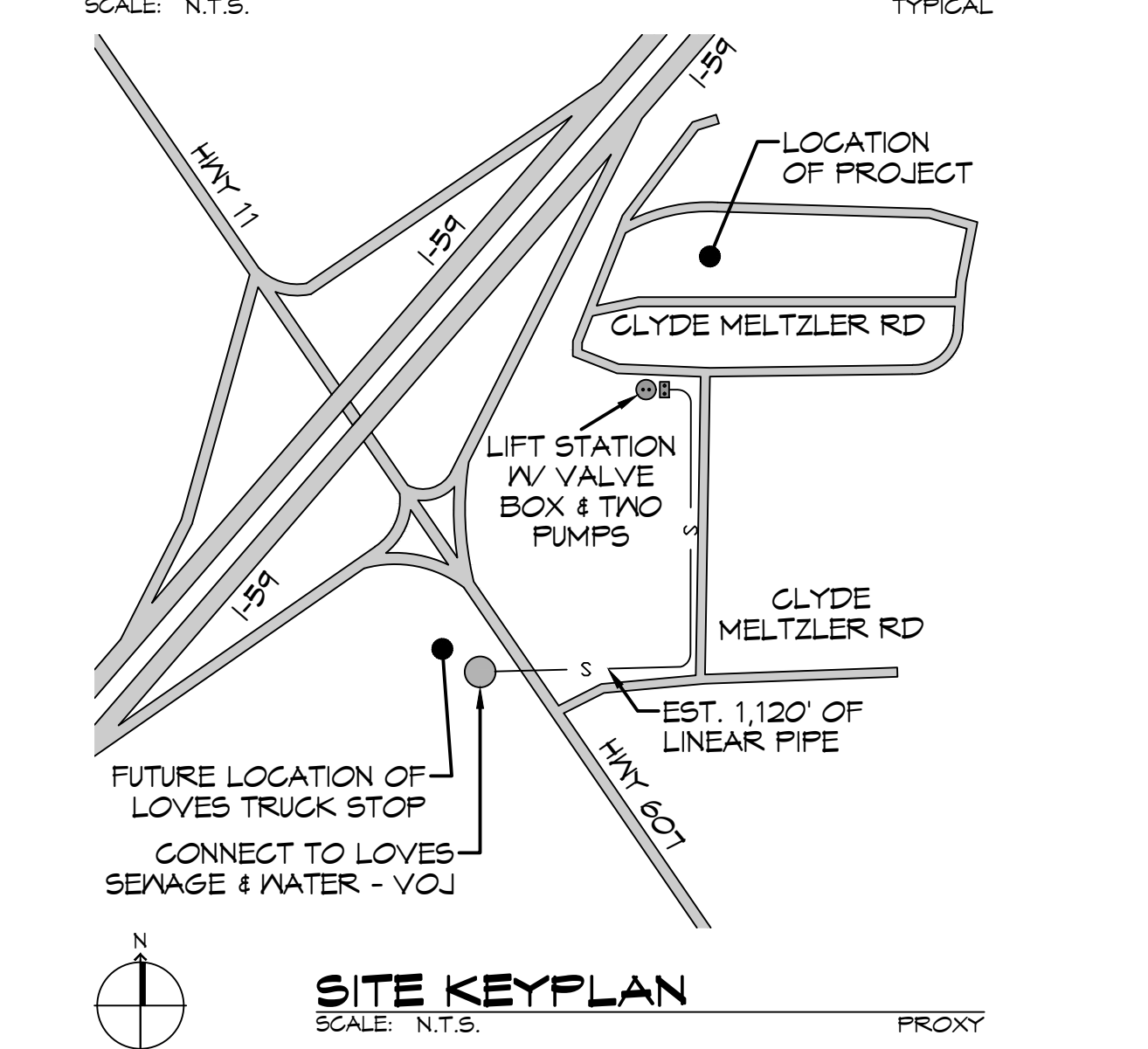
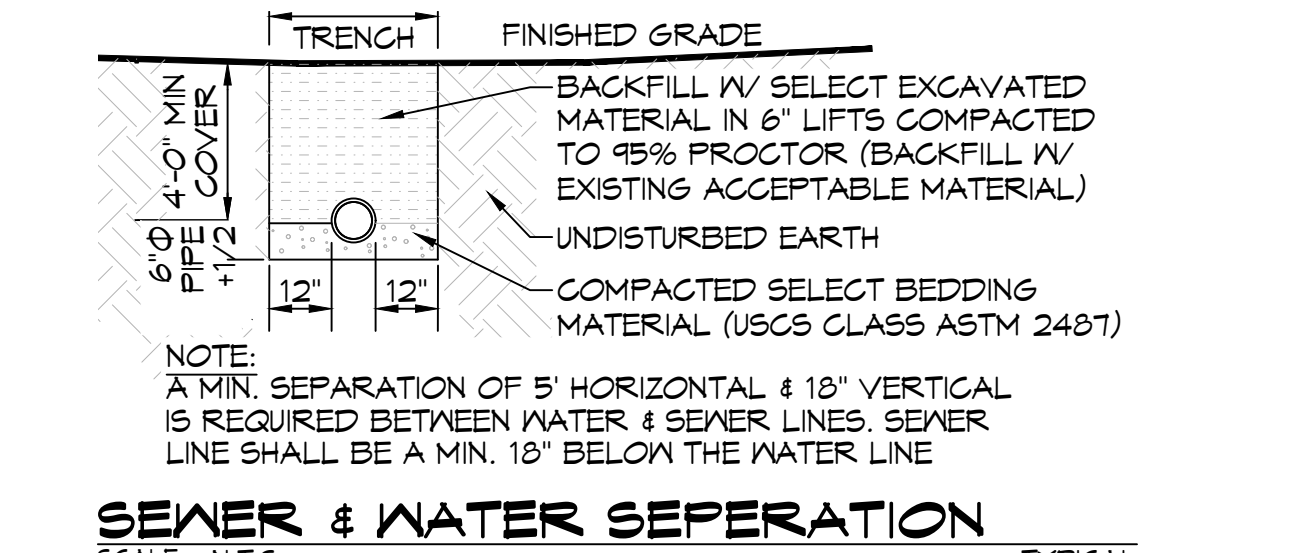
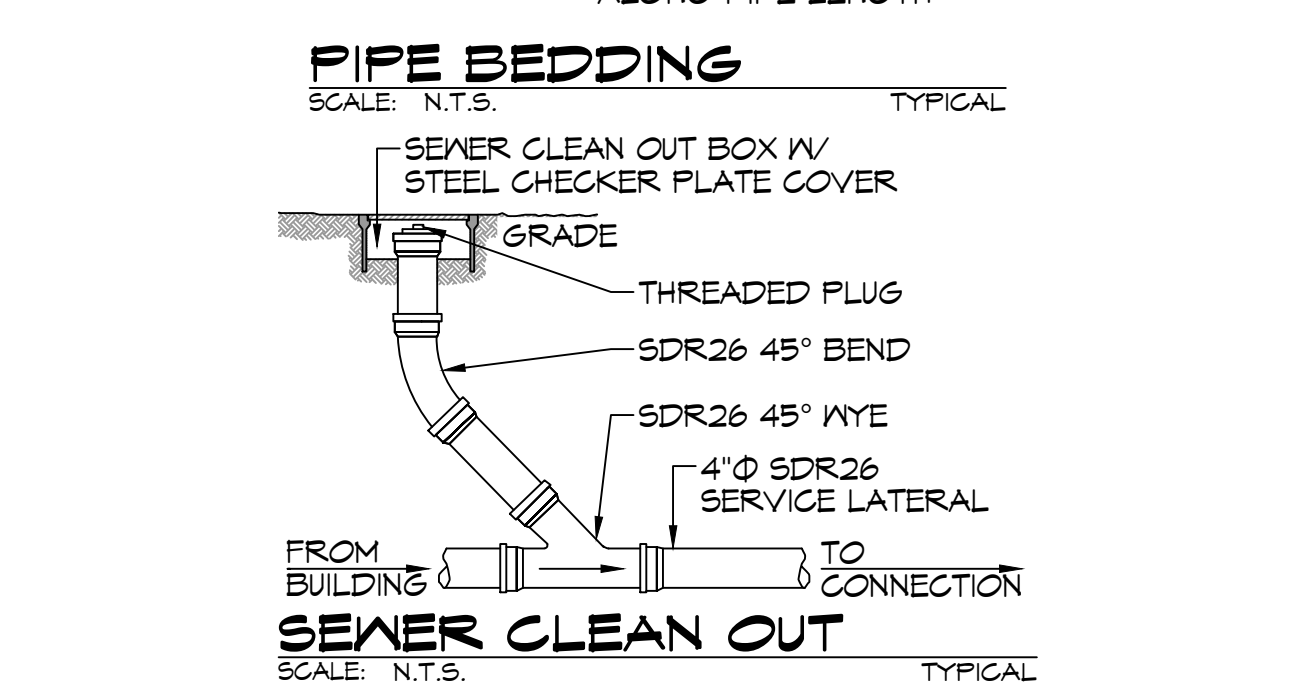
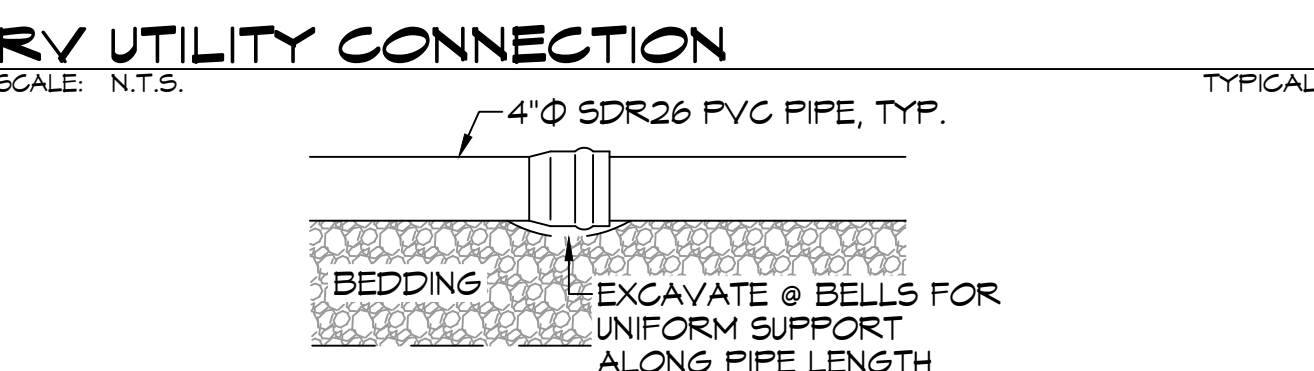
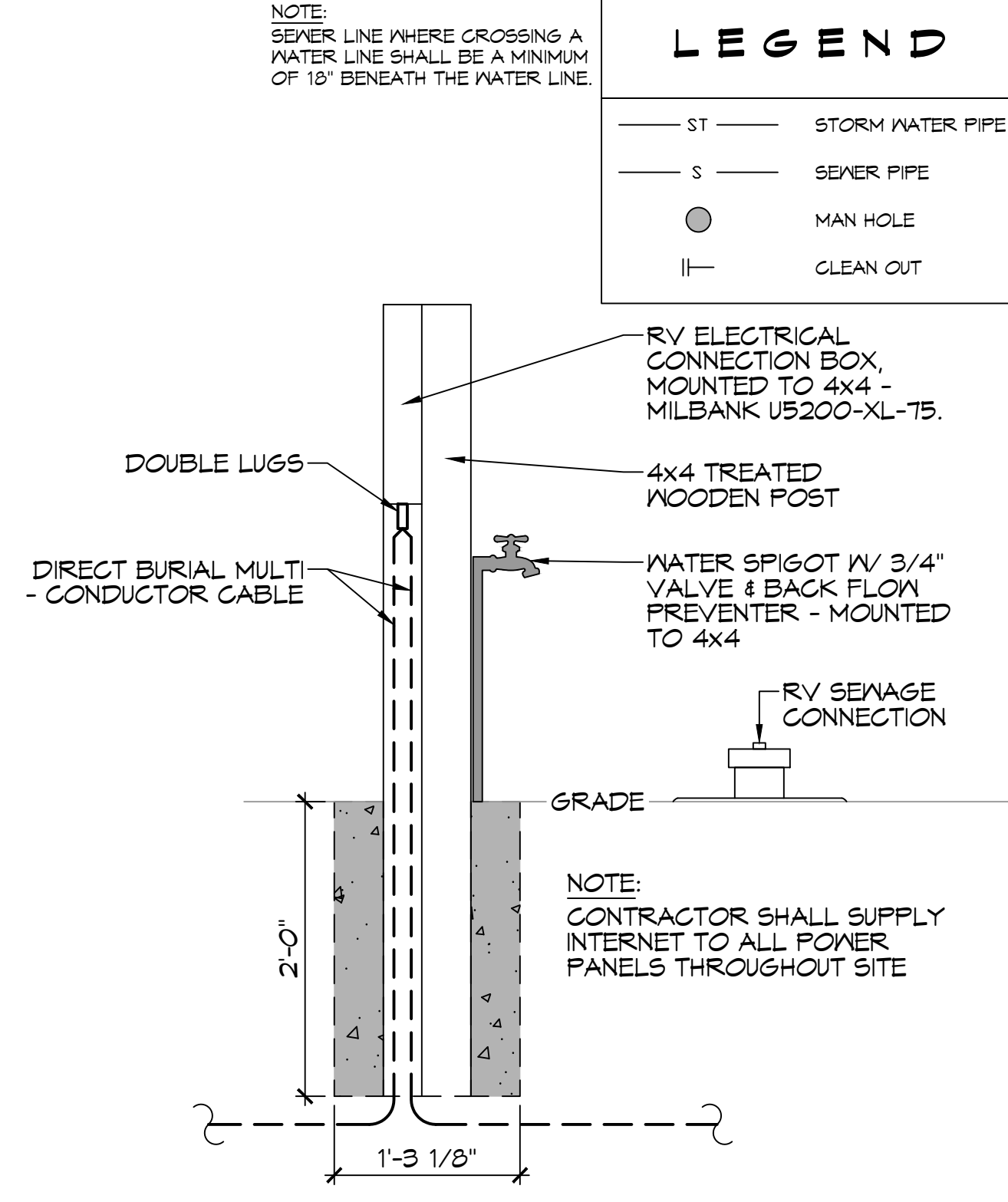
**LIFT STATION DETAIL**  
 SCALE: N.T.S.



**LIFT STATION DETAIL**  
 SCALE: N.T.S.



**SEWERAGE & DRAINAGE PLAN**  
 SCALE: 1" = 60'-0"



**DAMMON ENGINEERING, INC.**  
 LOUISIANA & MISSISSIPPI  
 Chief Engineer: Brian Wistich, PE  
 554 Old Spanish Trail  
 Slidell, LA 70488  
 www.dammonengineering.com  
 info@dammonengineering.com  
 PH: 985.649.5832

REVISIONS	DATE	DESCRIPTION

**NEW RECREATIONAL RV SITE**  
**EXIT 1 R.V. LLC**  
 CLYDE MELTZER ROAD  
 NICHOLSON MS 39555 (PI) 59466  
 JOB No: 2456 DATE: 04-06-2022  
 DRAWN BY: C&D CHECKED BY: C&D

**SHEET TITLE:**  
 SITE UTILITY PLAN

**DRAWING NUMBER:**  
**C103**

SHEET No: 5 of 15