

GENERAL PAVING NOTES

- ALL NEW CONCRETE SHALL HAVE A MINIMUM COMPRESSIVE STRENGTH OF 4,000 PSI AT 28 DAYS AND A MINIMUM THICKNESS OF 6". CONCRETE MIX SHALL BE IN ACCORDANCE WITH THE LATEST REVISION OF ASTM C-150 TYPE 1.
- CONCRETE PAVING THICKNESS SHALL VARY AS FOLLOWS:
 - APRONS & LOADING AREAS = 8" THICKNESS (INDICATED WITH CROSS HATCH WHERE OCCURS)
 - DRIVE LANES & PARKING AREAS = 6" THICKNESS (STANDARD UNO)
- ALL REINFORCING STEEL SHALL MEET ASTM-A615 (GRADE 60).
- ALL REINFORCING STEEL SHALL BE SECURELY SUPPORTED TO PREVENT BOTH VERTICAL AND HORIZONTAL MOVEMENT DURING CONCRETE PLACEMENT. ALL CONTROL AND EXPANSION JOINTS SHALL BE LOCATED AND INSTALLED AS SHOWN ON THE PAVING PLAN AND IN ACCORDANCE WITH THE MANUFACTURER'S RECOMMENDATIONS.
- ALL SUB GRADE FILL SHALL BE SELECT GRANULAR MATERIAL COMPACTED TO 95% STANDARD PROCTOR DENSITY IN A MAXIMUM OF 6" LIFTS.
- ANY WORK WITHIN THE ROADWAY OR ADJACENT TO THE ROADWAY CAUSING AN INTERFERENCE TO VEHICULAR TRAFFIC MUST CONFORM TO THE REQUIREMENTS SET FORTH BY THE UNIFORM MANUAL OF TRAFFIC CONTROL DEVICES OF THE STATE OF LOUISIANA. THE CONTRACTOR MUST FURNISH ALL NECESSARY TRAFFIC SIGNS AND/OR BARRICADES AND MAINTAIN THEM DURING CONSTRUCTION ACTIVITY.

PAVING LEGEND

- TOC XXXX** — TOP OF CONCRETE ELEVATION
- TOG XXXX** — TOP OF GRATE ELEVATION
- INV XXXXX** — INVERT OF PIPE ELEVATION
- L** — LONGITUDINAL JOINTS (LJ) = NO. 5 DEFORMED DONEL RODS 24" LONG @ 24" O. C.
- TJ** — TRANSVERSE JOINTS (TJ) = NO. 5 SMOOTH DONEL RODS 24" LONG @ 24" O. C.
- PARKING WHEEL STOP FOR EACH VACUUM BAY, SEE PAVING DETAIL FOR CONSTRUCTION
- NEW CATCH BASIN
- TRAFFIC CONES
- EXISTING TOPO

DAMMON ENGINEERING, INC.
 LOUISIANA & MISSISSIPPI
 Chief Engineer: Brian Mistich, PE
 554 Old Spanish Trail
 Slidell, LA 70468
 www.dammonengineering.com
 info@dammonengineering.com
 PH: 985.449.9832

#	DESCRIPTION	DATE

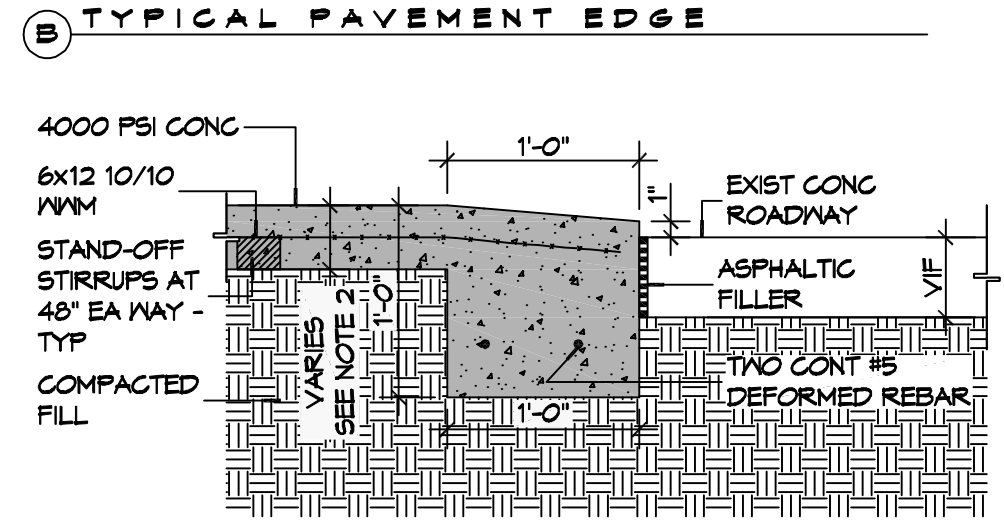
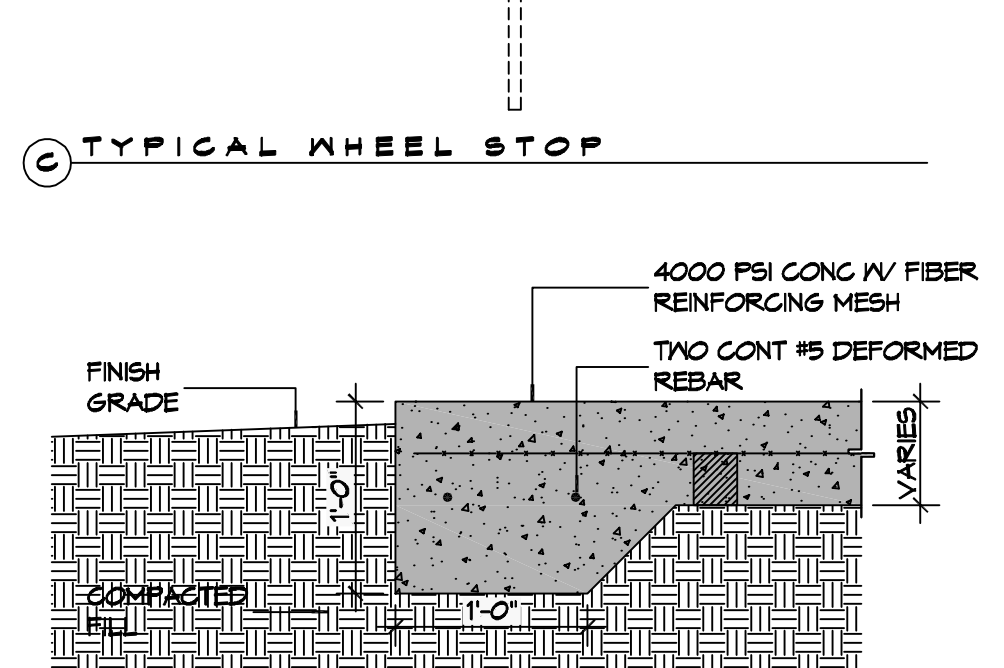
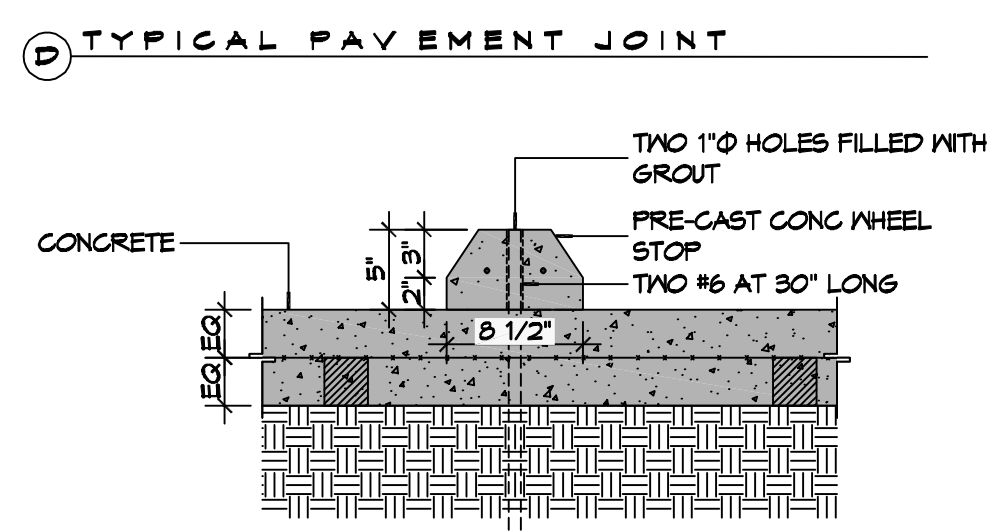
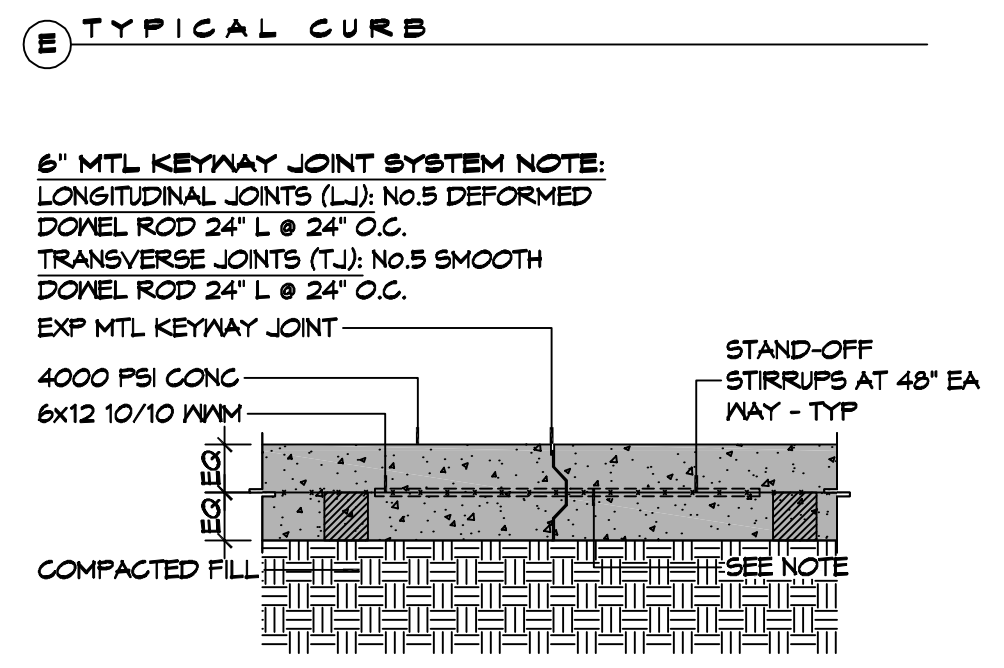
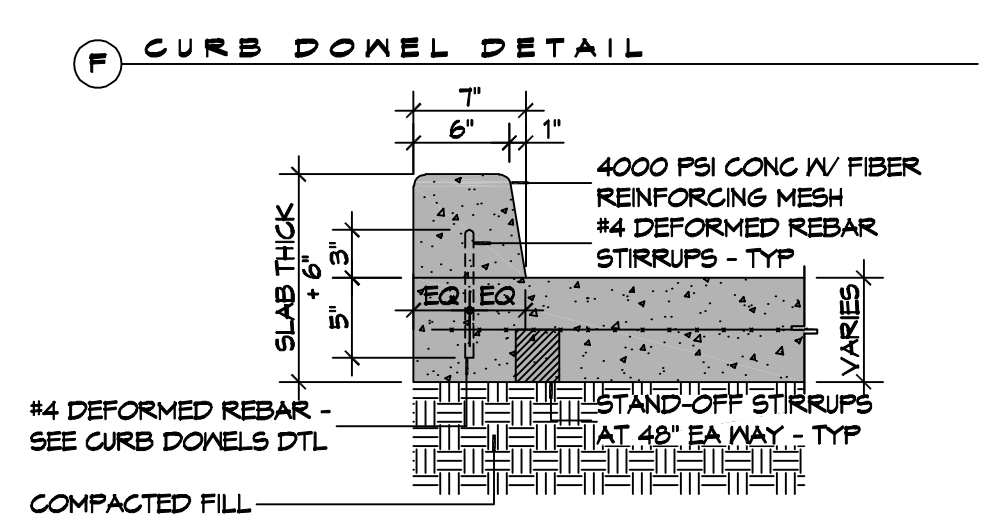
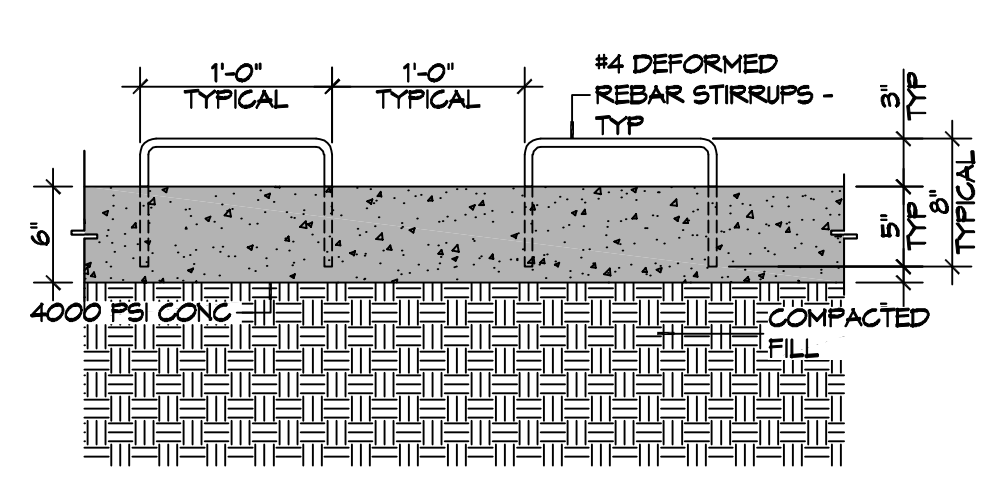
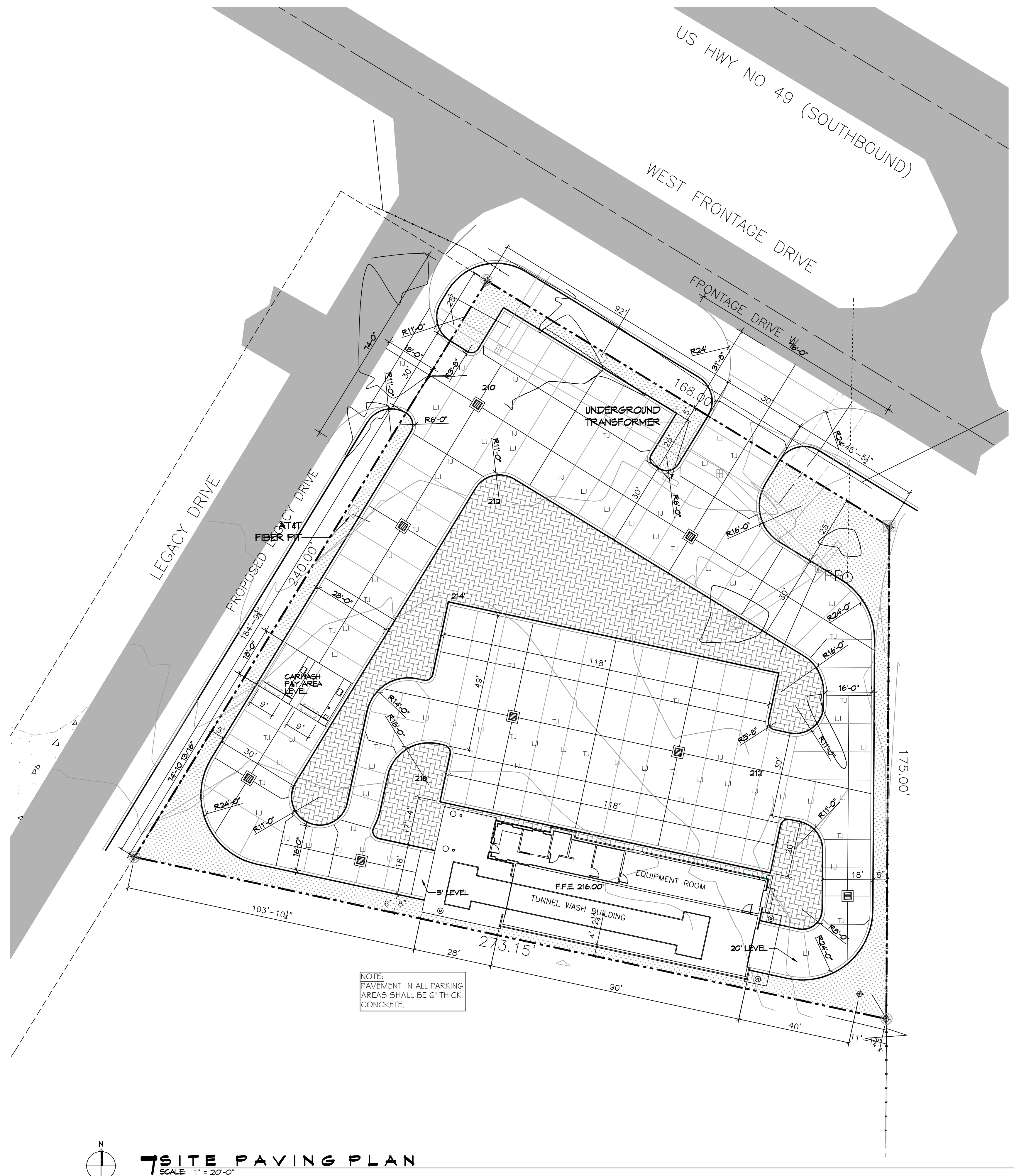
SEAL:

A NEW CARWASH FOR
CHEEKY MONKEY CARWASH
 WEST FRONTAGE DRIVE
 NONGANS, MISSISSIPPI 39577
 JOB No: 2502 DATE: 08-22-2024
 DRAWN BY: CCK CHECKED BY: BAW

SHEET TITLE:
SITE PAVING PLAN

DRAWING NUMBER:
C102

SHEET No: 4 of 10



8 PAVING DETAILS
 SCALE: 1" = 1'-0"

7 SITE PAVING PLAN
 SCALE: 1" = 20'-0"

FILE NAME: J:\Commercial\2024 - Cheeky Monkey Carwash - MS - Dammon\Drawings\General\0102 - Site Paving Plan.dwg DATE: 8/22/24 10:56:15 AM THURSDAY, SEPTEMBER 5, 2024 12:48:06 PM