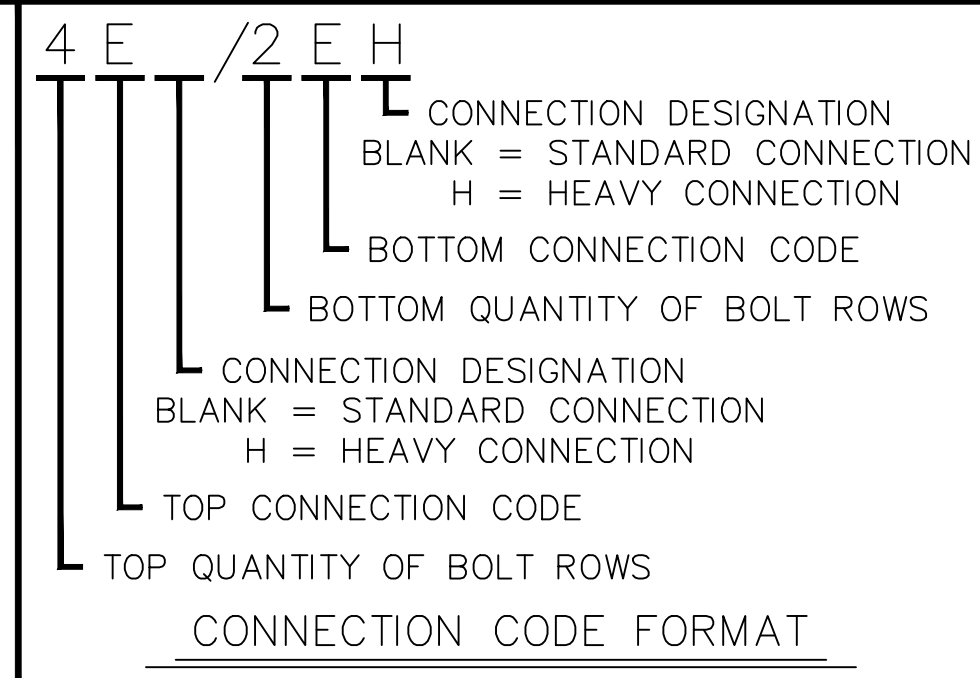
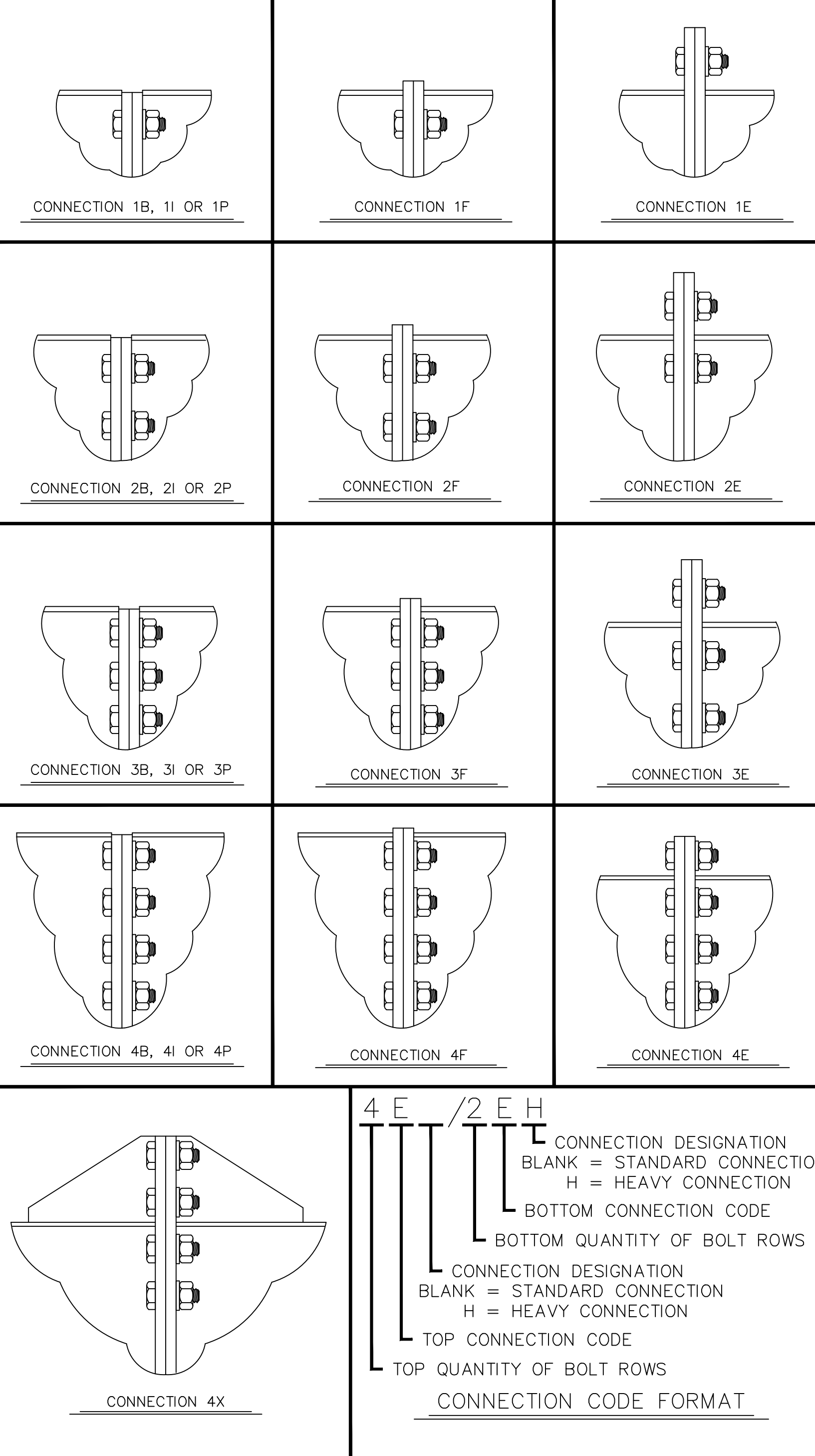


CONNECTION CODES
(FOR TOP AND BOTTOM BOLT PATTERN)

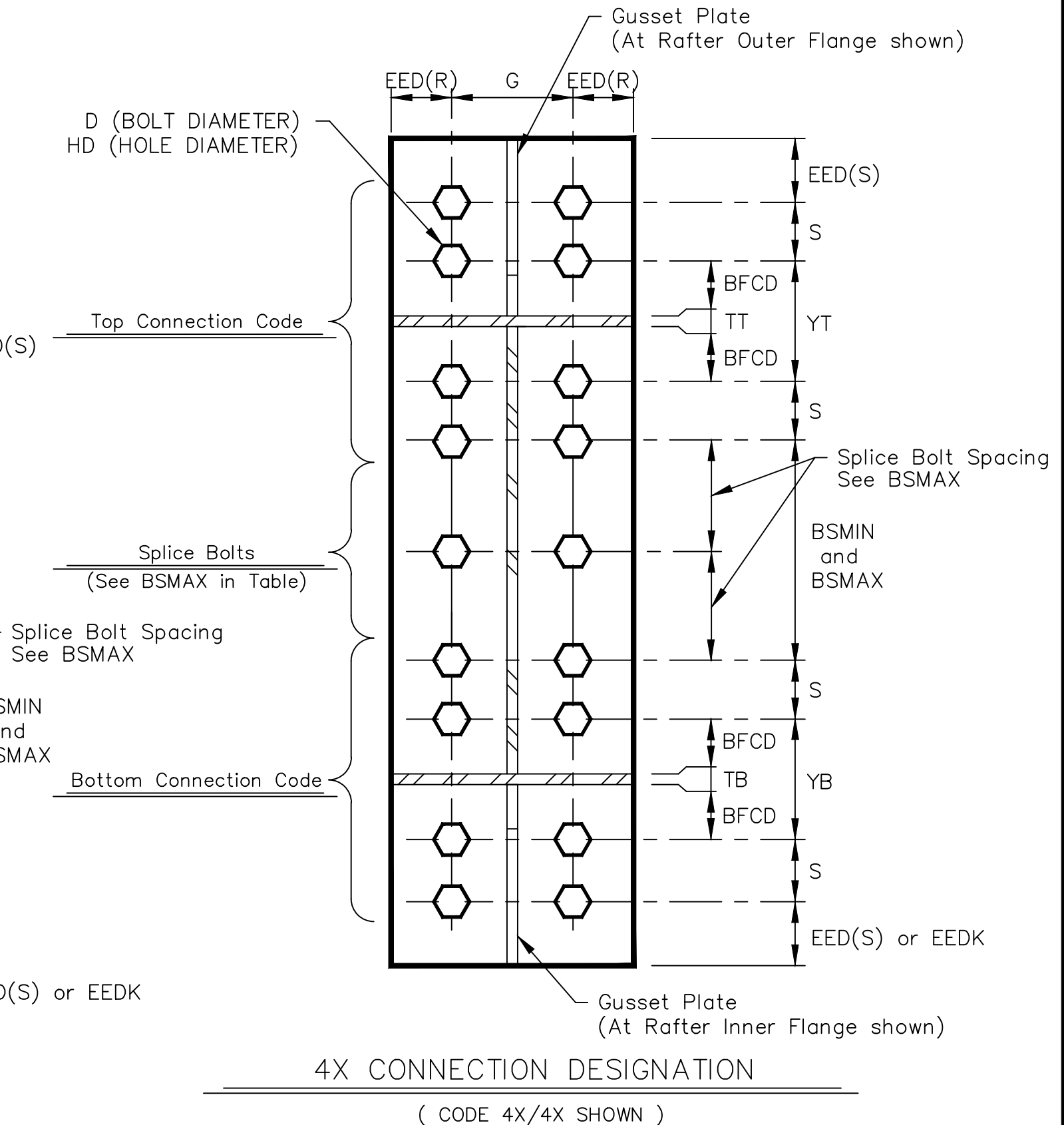
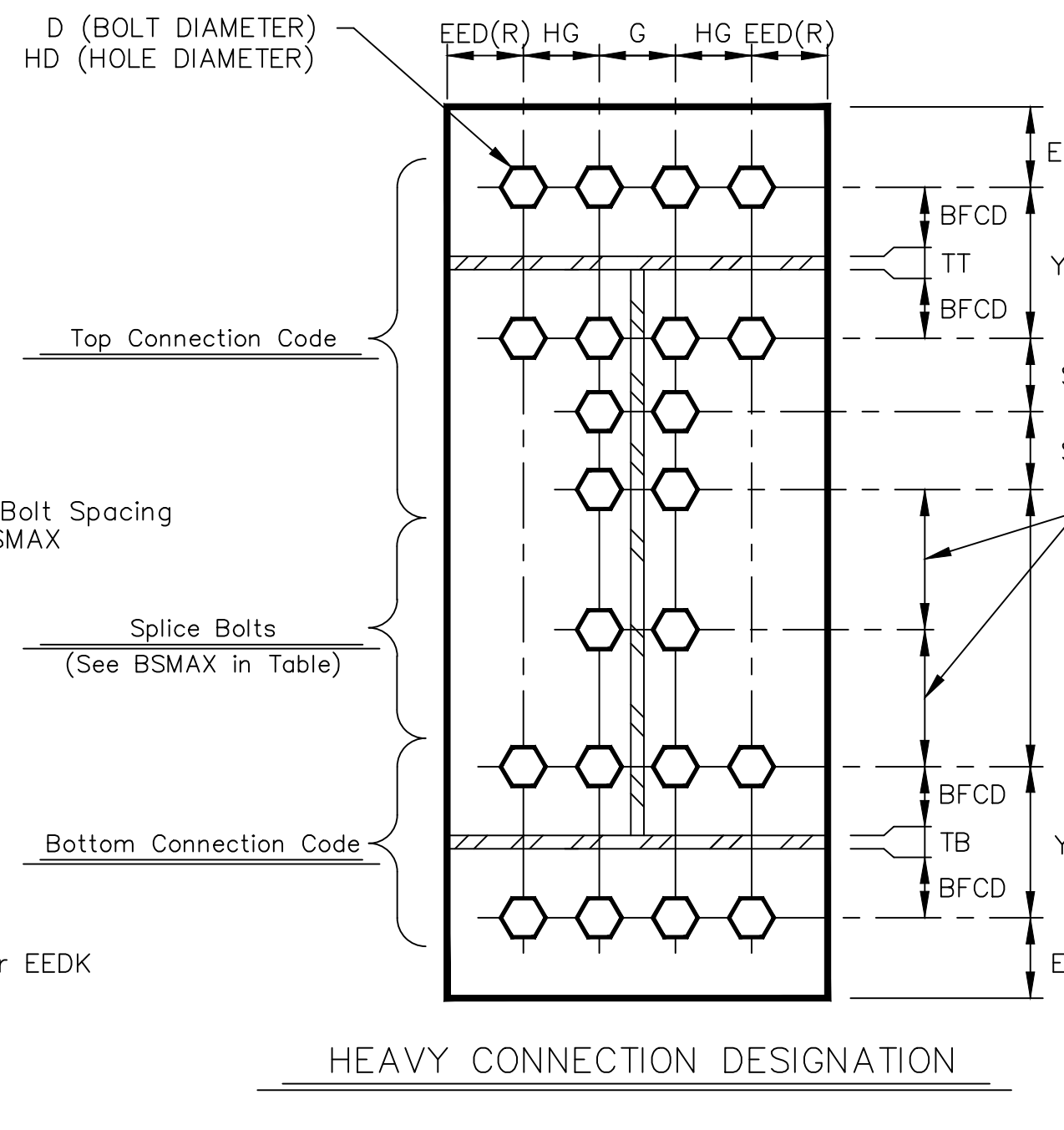
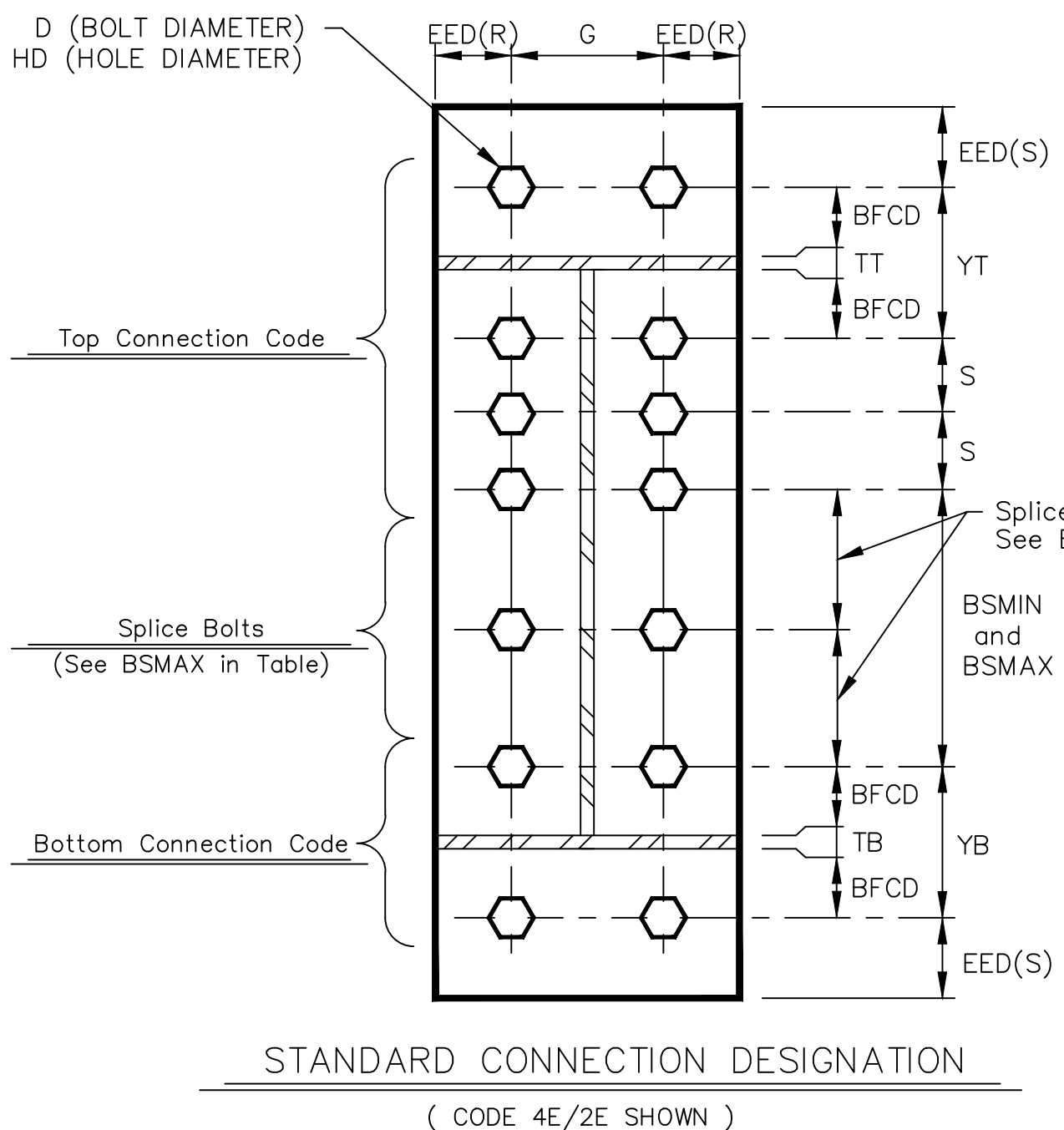


CONNECTION CODE DESCRIPTION

- B** = THIS DESCRIPTION CODE IS USED TO DEFINE SHEAR CONNECTIONS. BOLTS ARE LOCATED INSIDE THE OUTER FLANGE AND CONNECTION PLATE IS RECESSED 1/8" BELOW THE OUTER FLANGE.
- I** = THIS DESCRIPTION CODE IS USED TO DEFINE MOMENT CONNECTIONS. BOLTS ARE LOCATED INSIDE THE OUTER FLANGE AND CONNECTION PLATE IS RECESSED 1/8" BELOW THE OUTER FLANGE.
- P** = THIS DESCRIPTION CODE IS THE SAME AS B CODE, BUTT PLATE LENGTH MUST BE A MINIMUM OF 1/2" THE RAFTER DEPTH AND SHALL NOT EXCEED RAFTER TOTAL DEPTH.
- F** = THIS DESCRIPTION CODE IS USED TO DEFINE MOMENT CONNECTIONS. BOLTS ARE LOCATED INSIDE THE OUTER FLANGE AND CONNECTION PLATE PROJECTS 1/2" ABOVE THE OUTER FLANGE.
- E** = THIS DESCRIPTION CODE IS USED TO DEFINE MOMENT CONNECTIONS. BOLTS ARE LOCATED WITH ONE SET OUTSIDE THE OUTER FLANGE AND REMAINDER SETS LOCATED INSIDE THE OUTER FLANGE.
- 4X** = THIS DESCRIPTION CODE IS USED TO DEFINE MOMENT CONNECTIONS. BOLTS ARE LOCATED WITH TWO SETS EITHER SIDE THE OUTER FLANGE WITH A GUSSET PLATE OUTSIDE THE OUTER FLANGE OR COLUMN CAP PLATE.

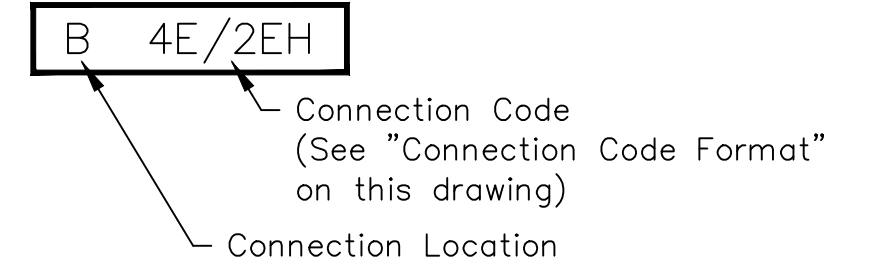
CONNECTION BOLT DATA

NAME	DESCRIPTION FOR A325 BOLT DIMENSIONS	A325 CONNECTION BOLT DIMENSIONS					
D	DIAMETER OF THE BOLT	1/2"	3/4"	7/8"	1"	1 1/4"	1 1/2"
HD	BOLT HOLE DIAMETER	9/16"	13/16"	15/16"	1 1/16"	1 5/16"	1 9/16"
G	BOLT GAUGE	2 1/2"	3"	4"	3 1/2"	4"	5 1/2"
G	MAX. WEB THICKNESS (Max. 5/8" Fillet Weld) WITHOUT WASHER	1"	1 1/8"	1 7/8"	1 1/4"	1 3/8"	2 1/8"
	MAX. WEB THICKNESS (Max. 5/8" Fillet Weld) WITH WASHER	3/4"	7/8"	1 5/8"	7/8"	7/8"	1 7/8"
HG	HEAVY CONN. BOLT GAUGE	N/A	2 1/4"	2 5/8"	3"	3 3/4"	4"
S	NORMAL BOLT SPACING	2 1/2"	3"	3 1/4"	3 1/2"	4"	4 1/2"
BSMIN	MINIMUM SPACING BETWEEN TOP & BOTTOM SETS OF BOLTS	1 1/2"	2 1/4"	2 5/8"	3"	3 3/4"	4"
BSMAX	MAXIMUM BOLT SPACING BETWEEN TOP AND BOTTOM SETS OF BOLTS ON CONNECTION PLATES LESS THAN OR EQUAL TO 3/4" THICK	2'-0"	2'-0"	2'-0"	2'-0"	2'-0"	2'-0"
		SPLICE BOLT SPACING (NOT TO EXCEED 2'-0") <ul style="list-style-type: none"> (1/2 BSMAX (±1/8") WHEN BSMAX = 2'-0" TO 4'-0") (1/3 BSMAX (±1/8") WHEN BSMAX = 4'-0" TO 6'-0") (1/4 BSMAX (±1/8") WHEN BSMAX = 6'-0" TO 8'-0") 					
BFGD	STANDARD BOLT-TO-FLANGE CLEARANCE DIMENSION (LARGER ON SLOPES 2:12 AND GREATER)	7/8"	1 1/8"	1 1/4"	1 3/8"	1 5/8"	1 7/8"
TT	THICKNESS TOP FLANGE	REFER TO FRAME PROFILE FOR LARGEST FLANGE THICKNESS EITHER SIDE OF SPLICE					
TB	THICKNESS BOTTOM FLANGE	REFER TO FRAME PROFILE FOR LARGEST FLANGE THICKNESS EITHER SIDE OF SPLICE					
YT	BOLT SPACING TOP (MIN = S)	1 3/4" + TT	2 1/4" + TT	2 1/2" + TT	2 3/4" + TT	3 1/4" + TT	3 3/4" + TT
YB	BOLT SPACING BOTTOM (MIN = S)	or TB Sloped	or TB Sloped	or TB Sloped	or TB Sloped	or TB Sloped	or TB Sloped
EED(S)	MINIMUM SHEARED END EDGE DIMENSION	1 1/4"	1 1/4"	1 1/2"	1 3/4"	2 1/4"	2 5/8"
EED(R)	MINIMUM ROLLED END EDGE DIMENSION	3/4"	1"	1 1/8"	1 1/4"	1 5/8"	2 1/4"
EEDK	END EDGE DIMENSION AT KNEE CONNECTION	1 3/8"	1 3/8"	1 5/8"	1 7/8"	2 3/8"	2 3/4"
BCWM	MIN. BOLT CLEARANCE FROM A FLANGE OR WEB WELD	WITHOUT WASHER	7/16"	5/8"	3/4"	13/16"	1"
		WITH HARDENED WASHER	9/16"	3/4"	7/8"	1"	1 1/4"
WCSM	MIN. WIDTH OF CONN. PL. (Standard Connection)	5"	6"	8"	8"	10"	12"
WCHM	MIN. WIDTH OF CONN. PL. (Heavy Connection)	N/A	10"	12"	12"	16"	18"
TCMIN	MINIMUM THICKNESS OF	1/4"	3/8"	7/16"	1/2"	5/8"	1"



Frame Documentation
Connection Bolt Details (A325)

Page 05-12-10
Date Mar '11 Rev. 02



CROSS SECTION CONNECTION CODE KEY
(AS SHOWN AT CONNECTIONS ON FRAME CROSS SECTION DRAWINGS)

Flange Brace Material Schedule

Part Mark	Material
FB4_	L 2" x 2" x 14 Ga.
FB5_	L 2" x 2" x 14 Ga.
FB6_	L 2" x 2" x 1/8"
FB7_	L 2 1/2" x 2 1/2" x 3/16"

STAR BUILDING SYSTEMS
An NCI Company

P.O. BOX 94910
OKLAHOMA CITY, OK 73143
(405) 656-2010

Project Name & Location:
PINNACLE CASINO -
MANHATTAN CONSTRUCTION
BATON ROUGE, LA

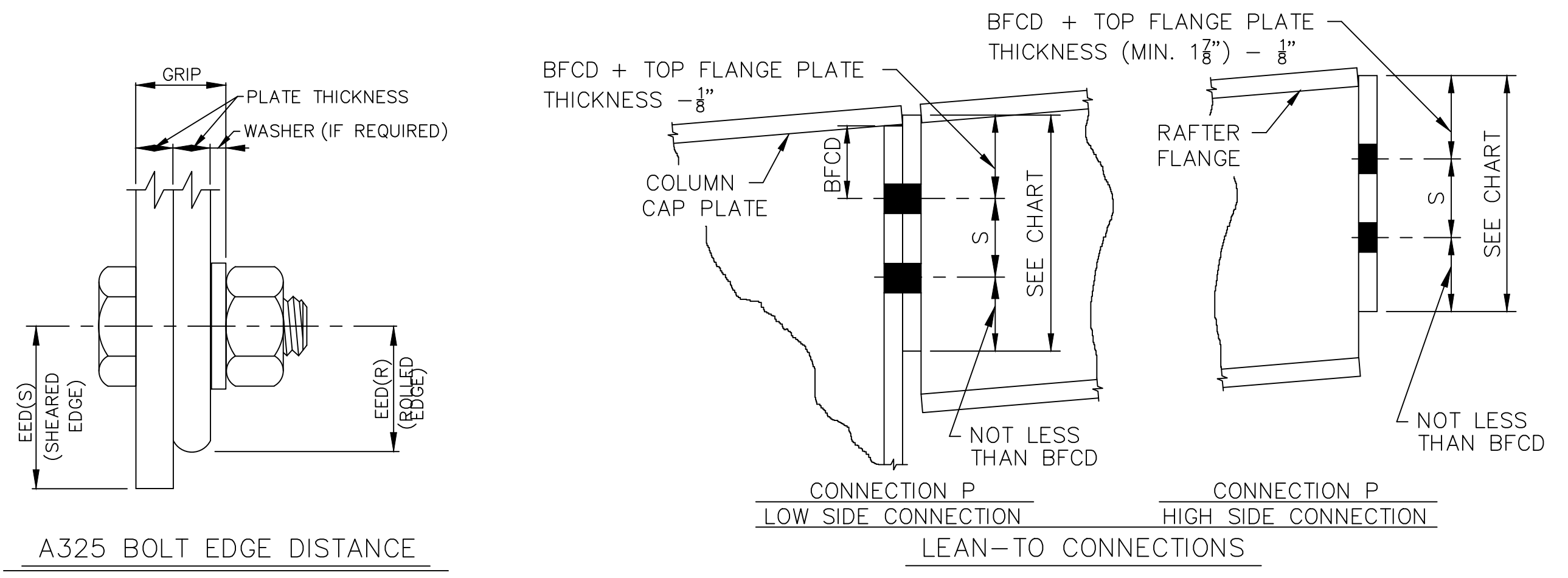
Customer:
CASEY CIVIL LLC
COMMERCIAL
MANDEVILLE, LA

Drawing Status:
 Preliminary
 For Approval
 For Construction Permit
 For Erector Installation

Scale: NOT TO SCALE
 Drawn by: LSI
 Checked by: LSA
 Project Engineer: AK
 Job Number: 12-B-63841
 Sheet Number: E15 of 16

The engineer whose seal appears hereon is an employee for the manufacturer for the materials described herein. Said seal or certification is limited to the products designed and manufactured by manufacturer only. The undersigned engineer is not the overall engineer of record for this project.

BRIAN A. CARMICHAEL, P.E.
Louisiana P.E. 33110



LEAN-TO BUTT PLATE LENGTH * CHART

BOLT QTY	2	4	6	8
1/2" Ø BOLT	6"	6"	7 1/2"	10"
3/4" Ø BOLT	6"	6"	9"	1'-0"
7/8" Ø BOLT	6"	6 1/2"	9 3/4"	1'-1"
1" Ø BOLT	6"	7"	10 1/2"	1'-2"

* NOTE: BUTT PLATE LENGTH MUST BE A MINIMUM OF 1/2 THE RAFTER WEB DEPTH AND SHALL NOT EXCEED RAFTER TOTAL DEPTH.

