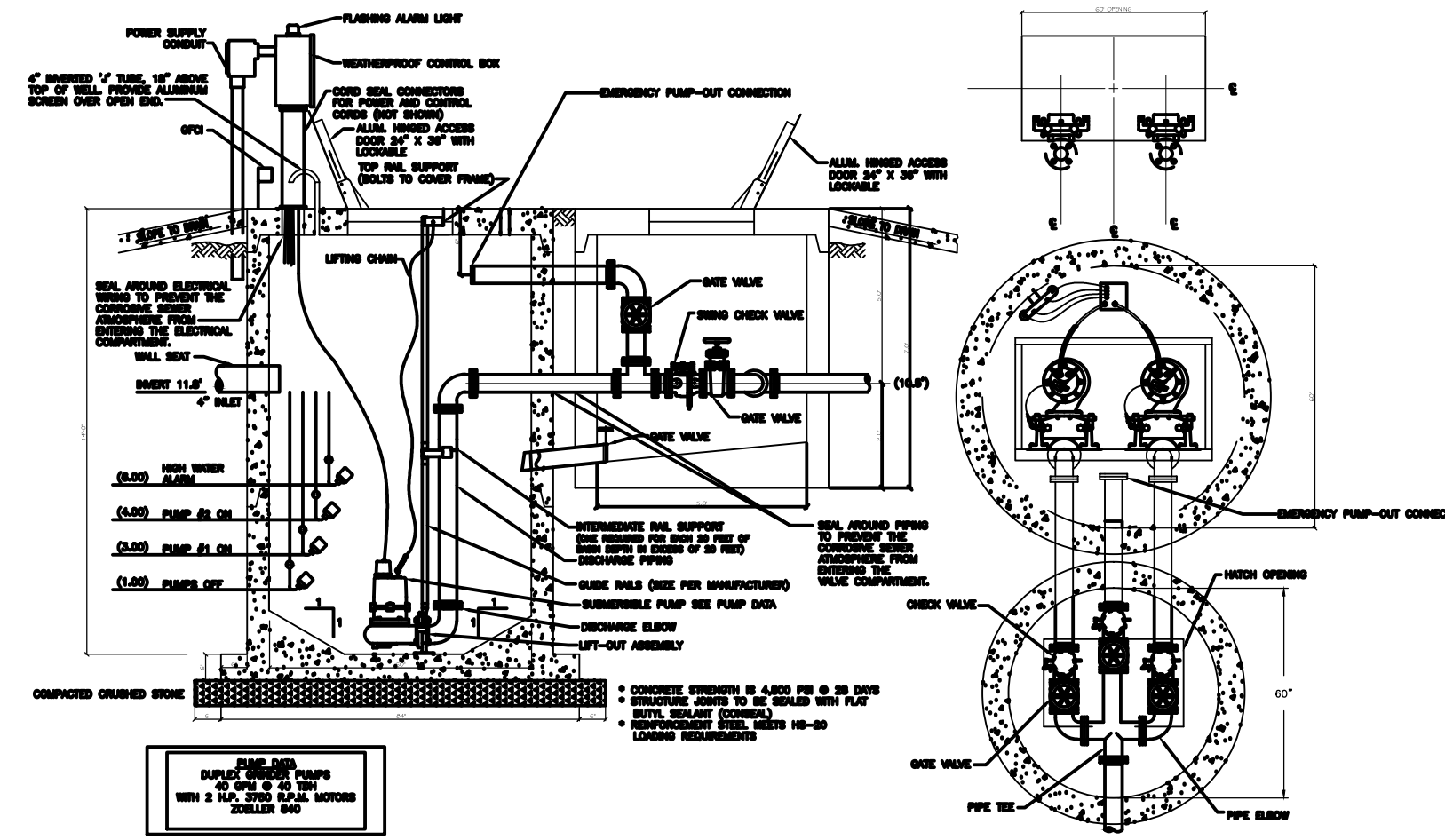


NOTE: A MINIMUM 10' HORZ. AND 18" VERT. SEPARATION (WITH WATER MAIN ON TOP) IS REQUIRED BETWEEN WATER AND SEWER LINES.

SEWER PIPE MAIN BEDDING DETAIL
SCALE: N.T.S.



DUPLIX LIFT STATION DETAIL
SCALE: N.T.S.

SITE UTILITIES NOTES

1. MINIMUM PIPE BURIAL TO BE 36 INCHES.
2. SEWER PIPE TO BE 6" SDR35 PVC, U.O.N..
3. 6" CLEANOUTS EVERY 80 FEET, STARTING FROM HIGHEST END.

GENERAL NOTES

1. PROVIDE ALL LABOR, MATERIALS AND EQUIPMENT FOR A COMPLETE OPERATING SYSTEM.
2. ALL WORK AND MATERIAL SHALL CONFORM STRICTLY TO THE LATEST LOCAL, CITY, COUNTY, STATE AND NATIONAL GOVERNING CODES.
3. CONTRACTOR IS TO VERIFY ALL EXISTING UTILITY LOCATIONS, ELEVATIONS, AND SIZES PRIOR TO COMMENCING ANY WORK. CONTRACTOR SHALL PAY NECESSARY FEES FOR THE UTILITIES CONNECTIONS.
4. CONTRACTOR IS RESPONSIBLE TO SET NEW INVERTS OF SEWERAGE PIPES.
5. 4-INCH SEWER LINES SHALL BE SLOPED 1/8" PER FOOT.
6. TEST ALL PIPING AT REQUIRED PRESSURE.
7. ALL PLUMBING SHALL BE CLOSELY COORDINATED WITH WATER SYSTEM.
8. ALL SEWER LINES SHOWN ARE DIAGRAMMATIC.
9. MINIMUM PIPE MAIN BURIAL SHALL BE 3'-0".
10. OWNER SHALL IDENTIFY TRAILER SPACING FOR CONTRACTOR TO LAYOUT SEWER WORK.

SITE UTILITIES LEGEND

- s- NEW SEWER LINE
- Z BACKFLOW PREVENTER
- C.O. CLEANOUT
- WASTE WATER PUMP
- SEWERAGE TREATMENT PLANT

DAMMON ENGINEERING, INC.
LOUISIANA & MISSISSIPPI
www.dammonengineering.com
info@dammonengineering.com
554 Old Spanish Trail
Slidell, LA 70568
PH: 985.649.5832 F: 985.641.5950

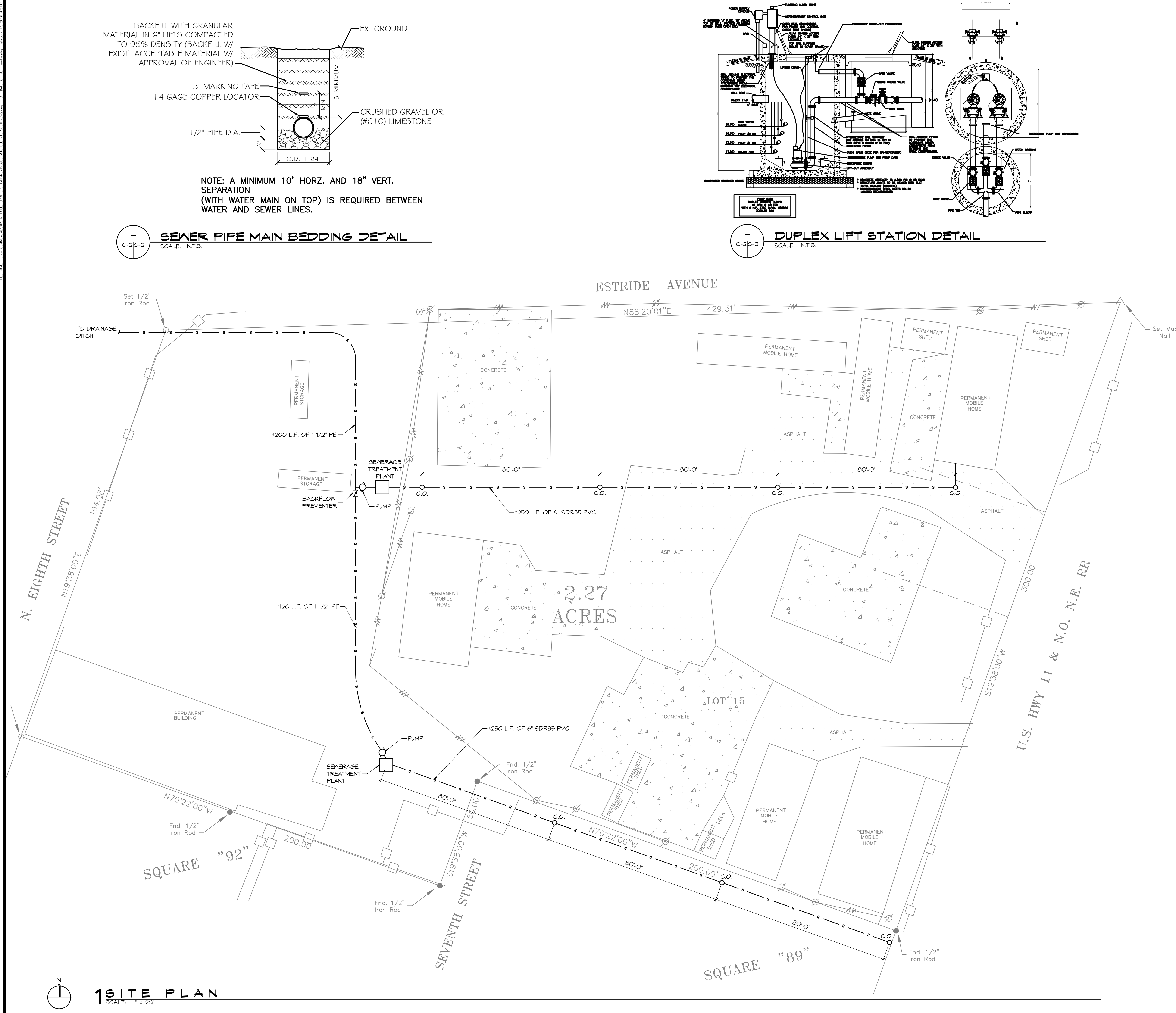
#	DESCRIPTION	DATE

SEAL: **PRELIMINARY NOT FOR CONSTRUCTION**

GUS MITCHELL SQUARE 89 & 92
ALTON ST. PARISH, LOUISIANA
JOB No:
DATE: FEBRUARY, 2016
DRAWN BY:
CHECKED BY: CKD

SHEET TITLE: **SEWER LAYOUT**

DRAWING NUMBER: **C-2**
SHEET No: 00 of 1



1 SITE PLAN
SCALE: 1" = 20'