

2 LEVEL ONE - EXISTING FLOOR PLAN
SCALE: 3/16" = 1'-0"

EXISTING DOOR SCHEDULE

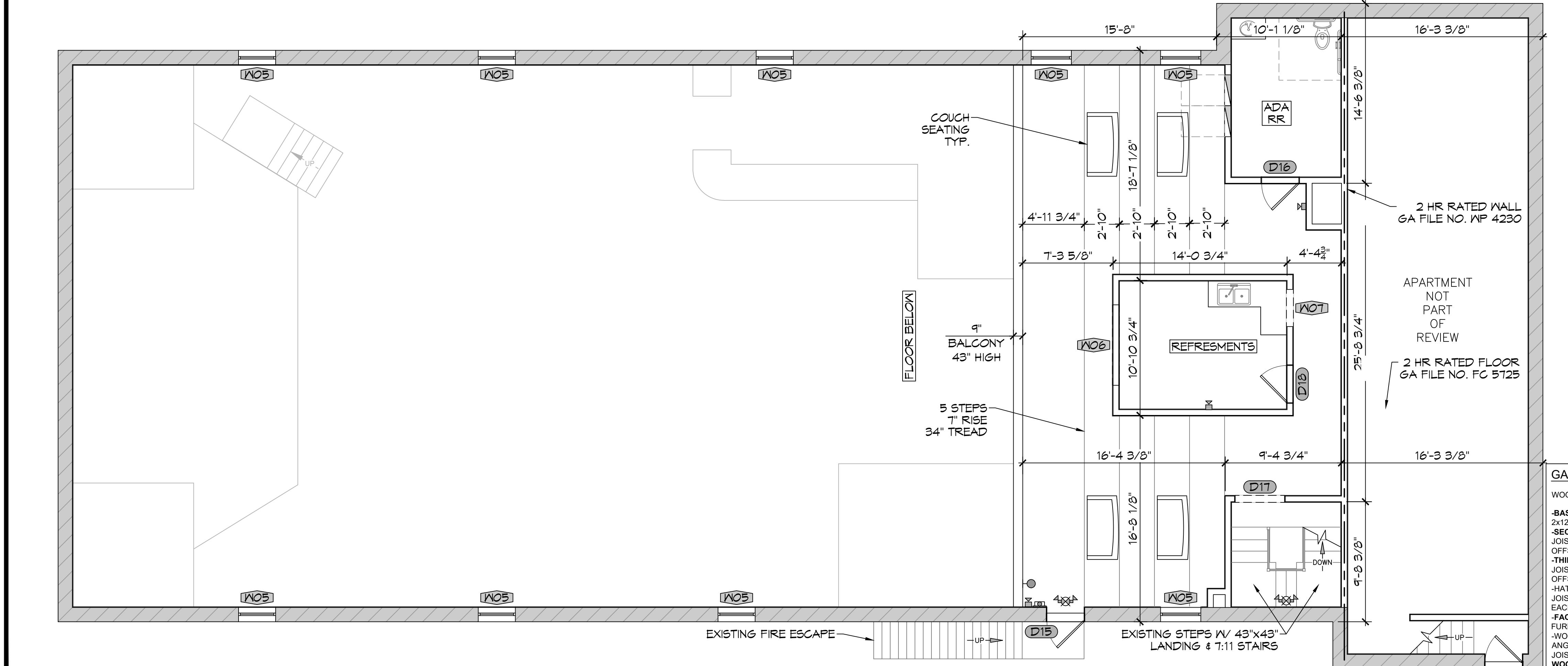
DOOR	MK	WIDTH	HEIGHT	DOOR MAT	REMARKS
D01	4'-0"	7'-0"	WOOD	PANIC BAR W/ CLOSURE	
D02	(2) 3'-0"	7'-0"	WOOD	PANIC BAR W/ CLOSURE	
D03	3'-0"	7'-0"	WOOD	FRONT OFFICE DOOR	
D04	3'-0"	7'-0"	WOOD	PANIC BAR W/ CLOSURE	
D05	(2) 3'-0"	7'-0"	WOOD	STAGE LOADING DOOR	
D06	3'-0"	7'-0"	WOOD	ADA RR DOOR W/ CLOUSER	
D07	3'-0"	6'-8"	WOOD	INTERIOR DOOR	
D08	2'-8"	6'-8"	WOOD	INTERIOR DOOR	
D09	4'-0"	-	-	CASED OPENING	
D10	8'-4"	7'-0"	-	CASED OPENING	
D11	3'-0"	7'-0"	WOOD	PANIC BAR W/ CLOSURE	
D12	3'-0"	6'-8"	-	SLIDING DOOR	
D13	3'-0"	6'-8"	-	SLIDING DOOR	
D14	2'-6"	6'-8"	WOOD	EXIT DOOR	
D15	3'-0"	6'-8"	WOOD	PANIC BAR	
D16	2'-6"	6'-8"	WOOD	2ND LEVEL ADA RR W/ CLOUSER	
D17	4'-0"	-	-	CASED OPENING	
D18	3'-0"	6'-8"	WOOD	INTERIOR DOOR	

EXISTING WINDOW SCHEDULE

WINDOW	MK	WIDTH	HEIGHT	AFF	REMARKS
W01	5'-6"	-	-	-	STORE FRONT WINDOW
W02	4'-0"	-	-	-	STORE FRONT WINDOW
W03	3'-0"	4'-2"	3'-7"	-	TICKET WINDOW
W04	5'-10"	3'-4"	3'-8"	-	OPEN SERVICE WINDOW
W05	3'-0"	3'-4"	-	-	2ND FLOOR FIXED WINDOW
W06	6'-6"	2'-3"	3'-1"	-	OPEN VIEWING WINDOW
W07	3'-6"	2'-3"	3'-1"	-	OPEN SERVICE WINDOW

LEGEND

- EXISTING FIRE EXTINGUISHER
- EXISTING FIRE STROBE
- EXISTING EXIT LIGHT
- EXISTING EMERGENCY LIGHT
- EXISTING EXIT/EMERGENCY COMBO
- EXISTING CARBON MONOXIDE ALARM
- EXISTING SMOKE DETECTOR
- 2 HOUR RATED EXTERIOR 14" BRICK
- 2 HOUR RATED WALL - WP 4230



3 LEVEL TWO - EXISTING FLOOR PLAN
SCALE: 3/16" = 1'-0"

2 HOUR RATED WALL
GA FILE NO. WP 4230 GENERIC

BASE LAYER 5/8" TYPE X GYPSUM WALLBOARD APPLIED AT RIGHT ANGLES TO EACH SIDE OF 2 X 6 WOOD STUDS 24" O.C. WITH 2 1/4" TYPE S OR W DRYWALL SCREWS 24" O.C. FACE LAYER 5/8" TYPE X GYPSUM WALLBOARD APPLIED AT RIGHT ANGLES TO EACH SIDE WITH 2 1/4" TYPE S DRYWALL SCREWS 8" O.C. 5 1/2" MINERAL FIBER INSULATION, NOMINAL 3 PCF, FRICTION FIT IN STUD SPACE.

JOINTS STAGGERED 24" EACH LAYER AND SIDE.

TESTED AT 5,506 LBS. PER STUD OR 100 PERCENT OF DESIGN LOAD. (LOAD BEARING)

2 HOUR FIRE

THICKNESS: 8"
APPROX. WEIGHT: 13 PSF
FIRE TEST: ITS J20 - 06170.3. 12-00

2 HOUR RATED FLOOR
GA FILE NO. FC 5725 GENERIC

WOOD FLOOR, WOOD JOISTS, GYPSUM WALLBOARD, RIGID FURRING CHANNELS

-BASE LAYER 5/8" TYPE X GYPSUM WALLBOARD APPLIED AT RIGHT ANGLES TO 2X12 WOOD JOISTS 24" O.C. WITH 1-1/4" TYPE W DRYWALL SCREWS 12" O.C.

-SECOND LAYER 5/8" TYPE X GYPSUM WALLBOARD APPLIED AT RIGHT ANGLES TO JOISTS WITH 2" TYPE W DRYWALL SCREWS 12" O.C. SECOND LAYER JOINTS OFFSET 24" FROM BASE LAYER JOINTS.

-THIRD LAYER 5/8" TYPE X GYPSUM WALLBOARD APPLIED AT RIGHT ANGLES TO JOISTS WITH 2-1/2" TYPE W DRYWALL SCREWS 12" O.C. THIRD LAYER JOINTS OFFSET 12" FROM SECOND LAYER JOINTS.

-HAT-SHAPED RIGID FURRING CHANNELS 24" O.C. APPLIED AT RIGHT ANGLES TO JOISTS OVER THIRD LAYER WITH TWO 2-1/2" LONG TYPE W DRYWALL SCREWS AT EACH JOIST.

-FACE LAYER 5/8" TYPE X GYPSUM WALLBOARD APPLIED AT RIGHT ANGLES TO FURRING CHANNELS WITH 1-1/8" TYPE S DRYWALL SCREWS 12" O.C.

-WOOD JOISTS SUPPORTING 3/4" T&G EDGE PLYWOOD FLOOR APPLIED AT RIGHT ANGLES TO JOISTS WITH 8D NAILS 6" O.C. AT JOINTS AND 12" AT INTERMEDIATE JOISTS. CEILING PROVIDES TWO-HOUR FIRE-RESISTANCE PROTECTION FOR WOOD FRAMING.

2 HOUR FIRE

APPROX. CEILING WEIGHT: 12 PSF
FIRE TEST: UL R4024, 00NK26545, 4-27-01, UL DESIGN L556

DAMMON ENGINEERING, INC.
LOUISIANA & MISSISSIPPI

Chief Engineer: Brian Mitchell, PE
554 Old Spanish Trail
Sicilly, LA 70458
www.dammonengineering.com
info@dammonengineering.com
PH: 985-649-5832

DATE	REVISIONS	#	DESCRIPTION

SEAL:

EXISTING BUILDING
OLDE TOWNE LIVE

DATE: 04-29-2022
DRAWN BY: TNT
CHECKED BY: JMS

204F CAREY ST
BIDELL, LA 70458
JOB No:

SHEET TITLE:
EXISTING FLOOR PLAN

DRAWING NUMBER:
A101

SHEET No: 3 of 3