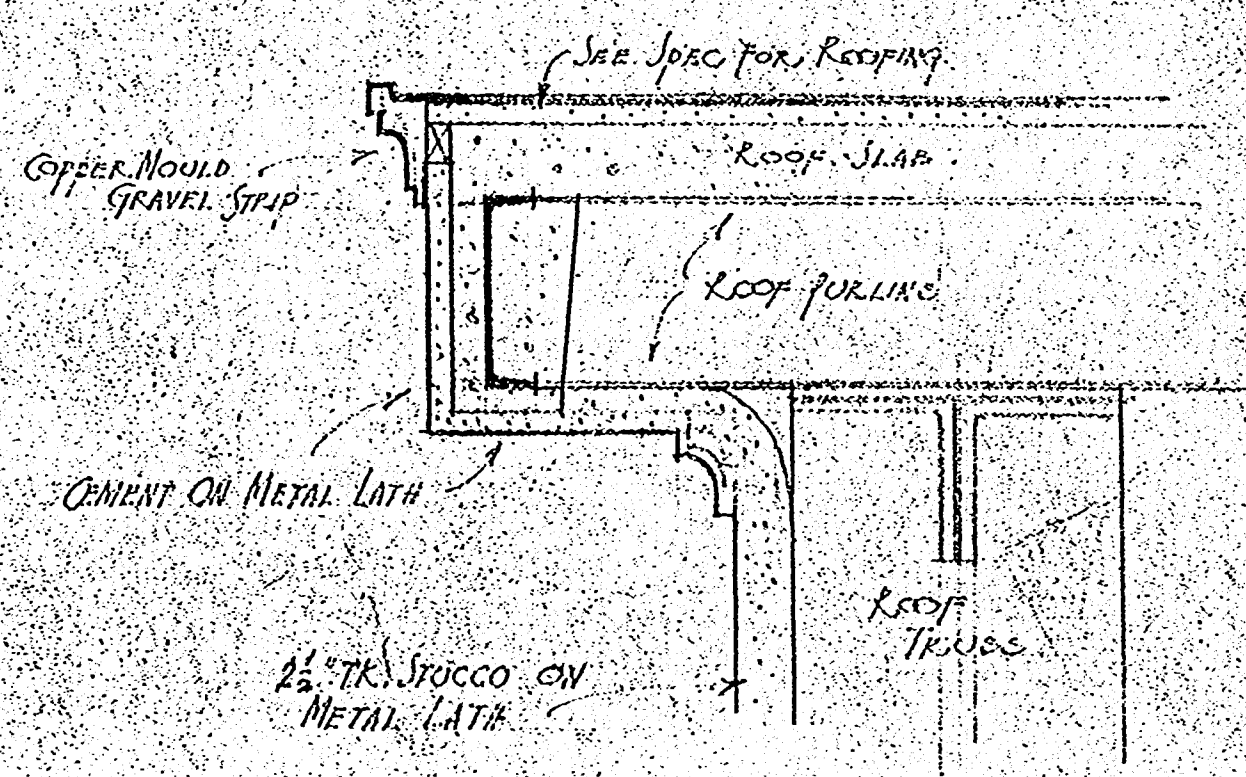
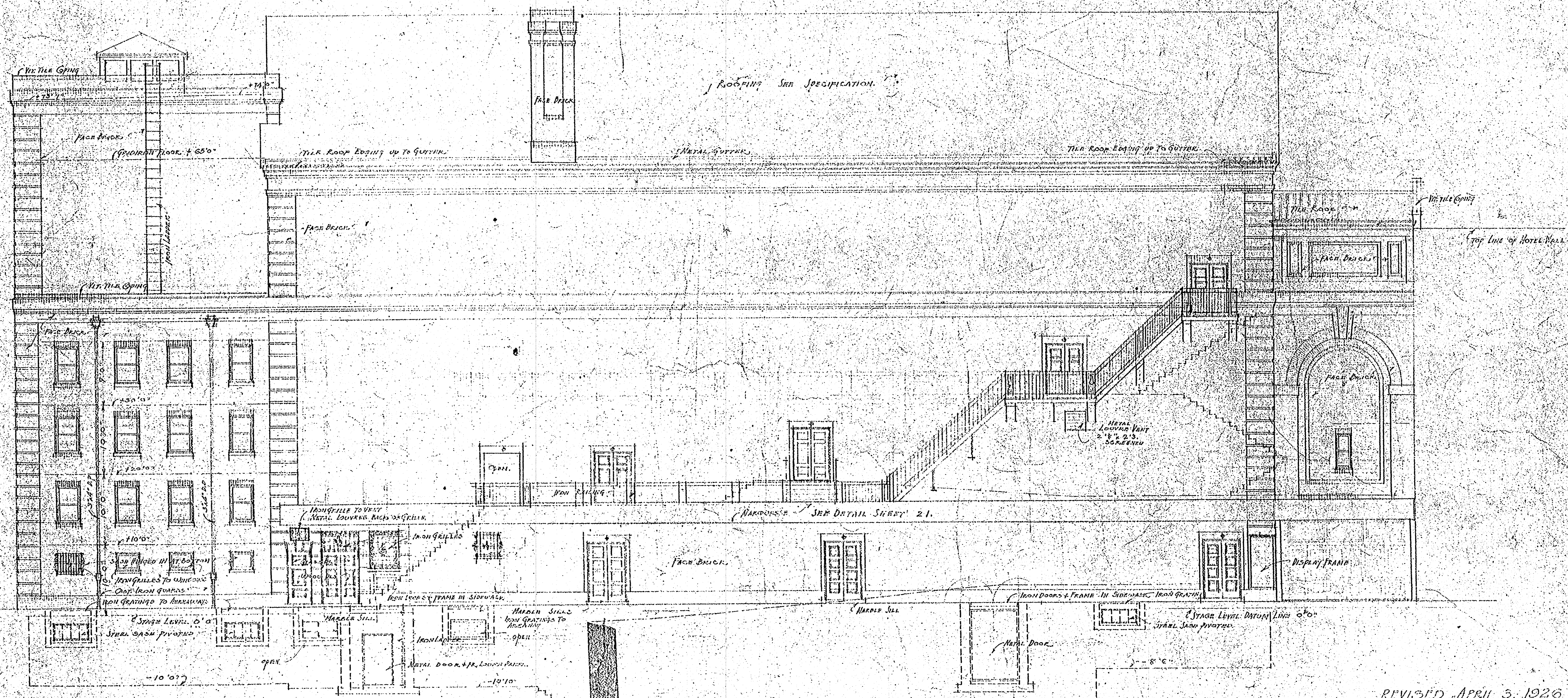


ELEVATION OF GABLE END ABOVE ARCADE
LOOKING FROM CANAL STR.
SCALE: 1/8 INCH = 1 FOOT



SECTION A-A
SCALE: 1/2 INCH = 1 FOOT



N. SARATOGA (CANAL) STREET ELEVATION
SCALE: 1/8 INCH = 1 FOOT

REVISED APRIL 3, 1926

CANAL STREET THEATRE
FOR
SALINGER THEATRE INC.
CANAL, N. RAMPART, JEFFERSON, N. SARATOGA (CANAL) STS.
NEW ORLEANS, LA.

REVISED April 3, 1926	EMILE WEIL ARCHITECTS WHITNEY CENTRAL BUILDING NEW ORLEANS, LA.	PLAN SHEET 27	DATE NOV. 20, 1925
--------------------------	---	------------------	--------------------