

All of these beams need to be at the same level as the OJ2000 to support wall(s) above.

(2) B1 to support the exterior wall

This area past the wall is porch area. The porch area will use 2x12 @ 16" o.c.

Tag	Len	Qty	Product	Cut Logic
<b>Floor Joist</b>				
J1	14'	84	3-1/2"x16" OJ2000 4x2 #2	84x(1/14)
J1	13'	35	3-1/2"x16" OJ2000 4x2 #2	35x(1/13)
J1	9'	16	3-1/2"x16" OJ2000 4x2 #2	16x(1/9)
J2	10'	2	2-1/2"x16" PWI 32S	2x(2/5)
J2	6'	1	2-1/2"x16" PWI 32S	1x(1/5)
<b>Beam</b>				
B1	30'	2	1-3/4"x16" PWT™ LVL	2x(1/30)
B1	26'	2	1-3/4"x16" PWT™ LVL	2x(1/26)
B1	22'	3	3-1/4"x16" PWT™ LVL	3x(1/22)
B1	18'	28	1-3/4"x16" PWT™ LVL	18x(1/18) 10x(1/17)
B1	16'	2	1-3/4"x16" PWT™ LVL	2x(1/16)
B1	14'	30	1-3/4"x16" PWT™ LVL	18x(1/14) 12x(1/13)
B2	16'	10	1-3/4"x16" PWT™ Treated LVL	8x(1/16) 2x(1/15)
B2	14'	2	1-3/4"x16" PWT™ Treated LVL	2x(1/14)
<b>Rim</b>				
Rm1	R/L	212	1-1/8"x16" Tolko OSB Rim Board Plus	
Rm2	R/L	73	1-1/8"x16" Tolko T-TEC LSL Rim Board	

Scale 1/4"=1'0"

**SHOP DRAWING / SUBMITTAL REVIEW**

REVIEWED       REVIEWED AS NOTED  
 REVISE AND RESUBMIT       REJECTED

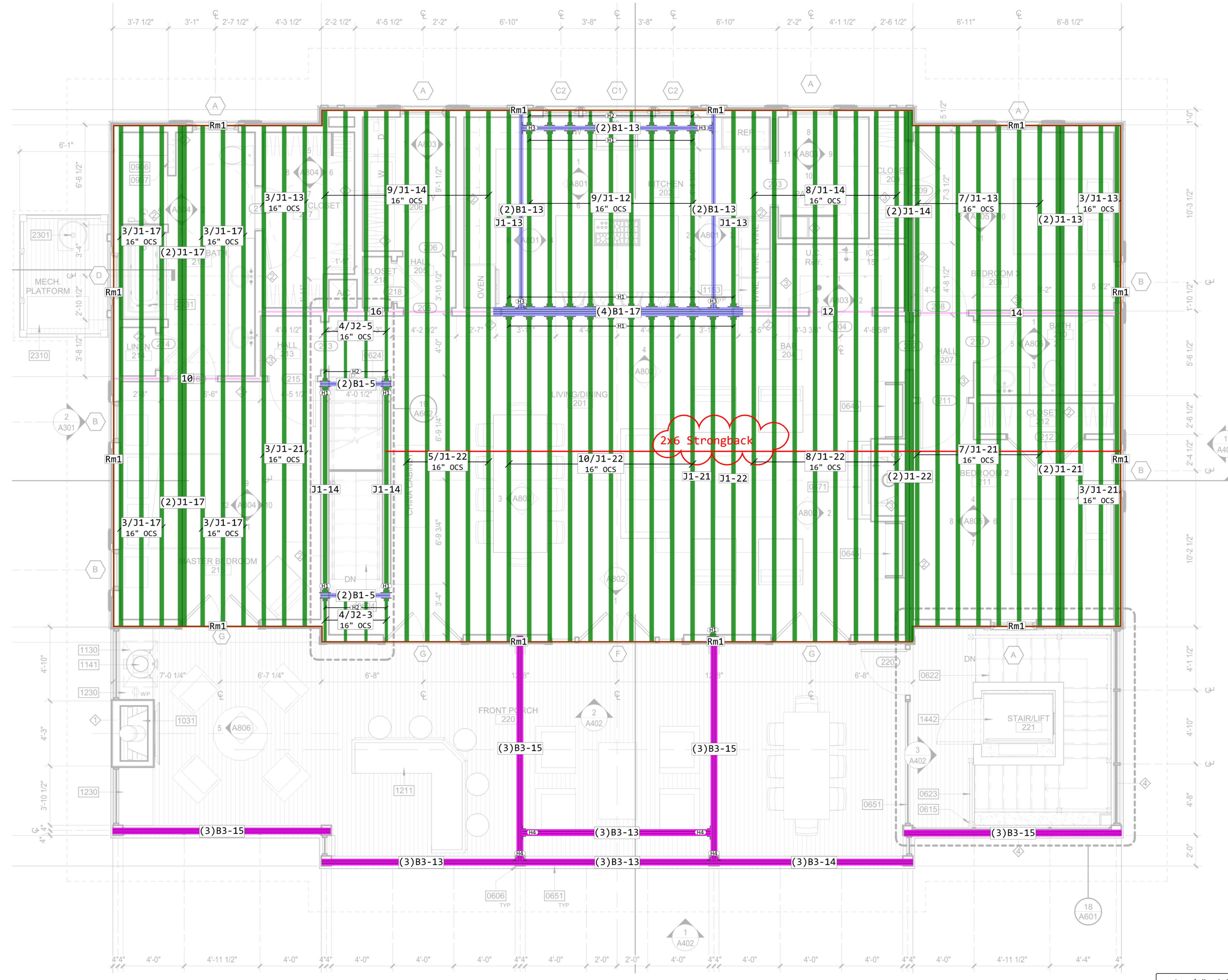
Project No.: \_\_\_\_\_ Submittal No.: \_\_\_\_\_

Corrections or comments made on the shop drawings during this review do not relieve the contractor from compliance with requirements of the drawings and specifications. This check is only for review of the general conformance with the design concept of the project and general compliance with the information given in the contract documents. This contractor is responsible for: confirming and correlating all quantities and dimensions; selecting fabrication processes and techniques of construction; coordinating his or her work with that and other trades and performing all in a safe and satisfactory manner.

By: David Dammon Date: 5/1/2024  
**DAMMON ENGINEERING, INC.**  
 Slidell, LA

These placement plans for the products specified were based on the information provided to us. This service is solely intended for product application assurance; it is not intended to circumvent the need for a design professional as determined by the building codes. The designer or local building official/permitting authority shall verify that these plans are compatible with the overall project.

Roof Live Load (PSF):	20
Roof Dead Load (PSF):	10
Floor Load Deflection Criteria:	L/480
Floor Live Load (PSF):	40
Floor Dead Load (PSF):	10
Estimator:	PBT
Tracking:	55338



Scale 1/4"=1'0"

Tag	Len	Qty	Product	Cut Logic
<b>Floor Joist</b>				
J1	22'	28	3-1/2"x16" OJ2000 4x2 #2	28x(1/22)
J1	21'	18	3-1/2"x16" OJ2000 4x2 #2	18x(1/21)
J1	17'	16	3-1/2"x16" OJ2000 4x2 #2	16x(1/17)
J1	14'	21	3-1/2"x16" OJ2000 4x2 #2	21x(1/14)
J1	13'	17	3-1/2"x16" OJ2000 4x2 #2	17x(1/13)
J1	12'	9	3-1/2"x16" OJ2000 4x2 #2	9x(1/12)
J2	10'	12	1-1/2"x16" PW1 32S	1x(2/5)
J2	8'	8	1-1/2"x16" PW1 32S	1x(1/3 1/5)
J2	6'	2	2-1/2"x16" PW1 32S	1x(2/3) 1x(1/5)
J2	4'	4	1-1/2"x16" PW1 32S	1x(1/1 1/3)
J2	2'	2	4-1/2"x16" PW1 32S	4x(2/1)
<b>Beam</b>				
B1	18'	4	1-3/4"x16" PWT™ LVL	4x(1/17)
B1	14'	6	1-3/4"x16" PWT™ LVL	6x(1/13)
B1	10'	2	1-3/4"x16" PWT™ LVL	2x(2/5)
B3	16'	12	1-3/4"x11-7/8" PWT™ Treated LVL	12x(1/15)
B3	14'	12	1-3/4"x11-7/8" PWT™ Treated LVL	3x(1/14) 9x(1/13)
<b>Rim</b>				
Rm1	R/L	222	1-1/8"x16" Toiko OSB Rim Board Plus	
<b>Hanger</b>				
H1		37	IUS3.56/16 Simpson Strong Tie	
H2		17	IUS2.56/16 Simpson Strong Tie	
H3		4	HGUS414 Simpson Strong Tie	
H4		4	HGUS5.50/12 Simpson Strong Tie	

202403-55338  
 Case Residence  
 34159 Lowry Lane  
 Slidell, Louisiana 70460  
 2nd Flr

These placement plans for the products specified were based on the information provided to us. This service is solely intended for product application assurance; it is not intended to circumvent the need for a design professional as determined by the building codes. The designer or local code official/inspector are responsible for determining if these plans are compatible with the overall project.

Roof Live Load (PSF): 20
Roof Dead Load (PSF): 10
Floor Load Deflection Criteria: L/480
Floor Live Load (PSF): 40
Floor Dead Load (PSF): 10
Estimator: PBT
Tracking: 55338