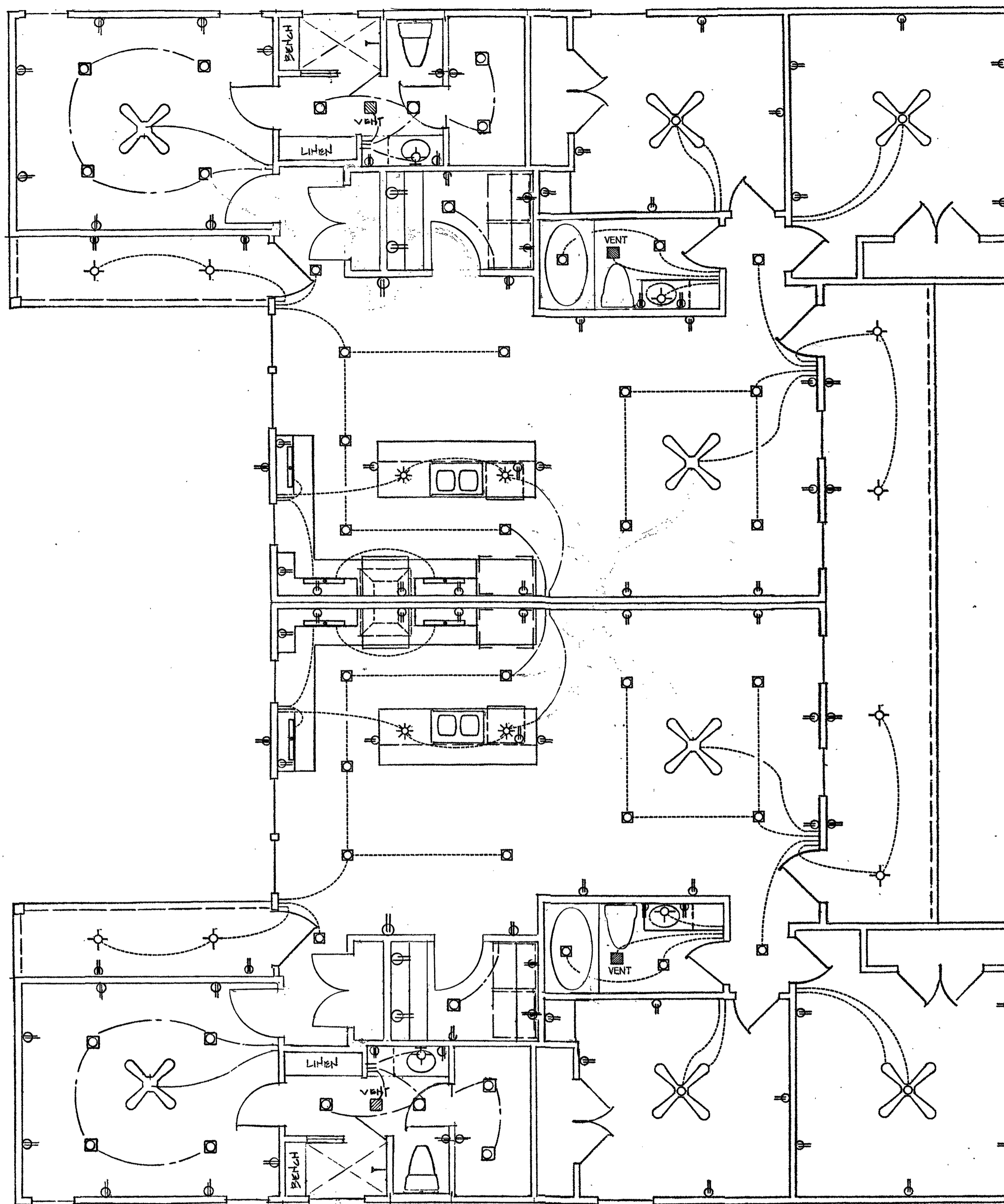




CABINETRY PLAN
SCALE: 3/8" = 1'-0"

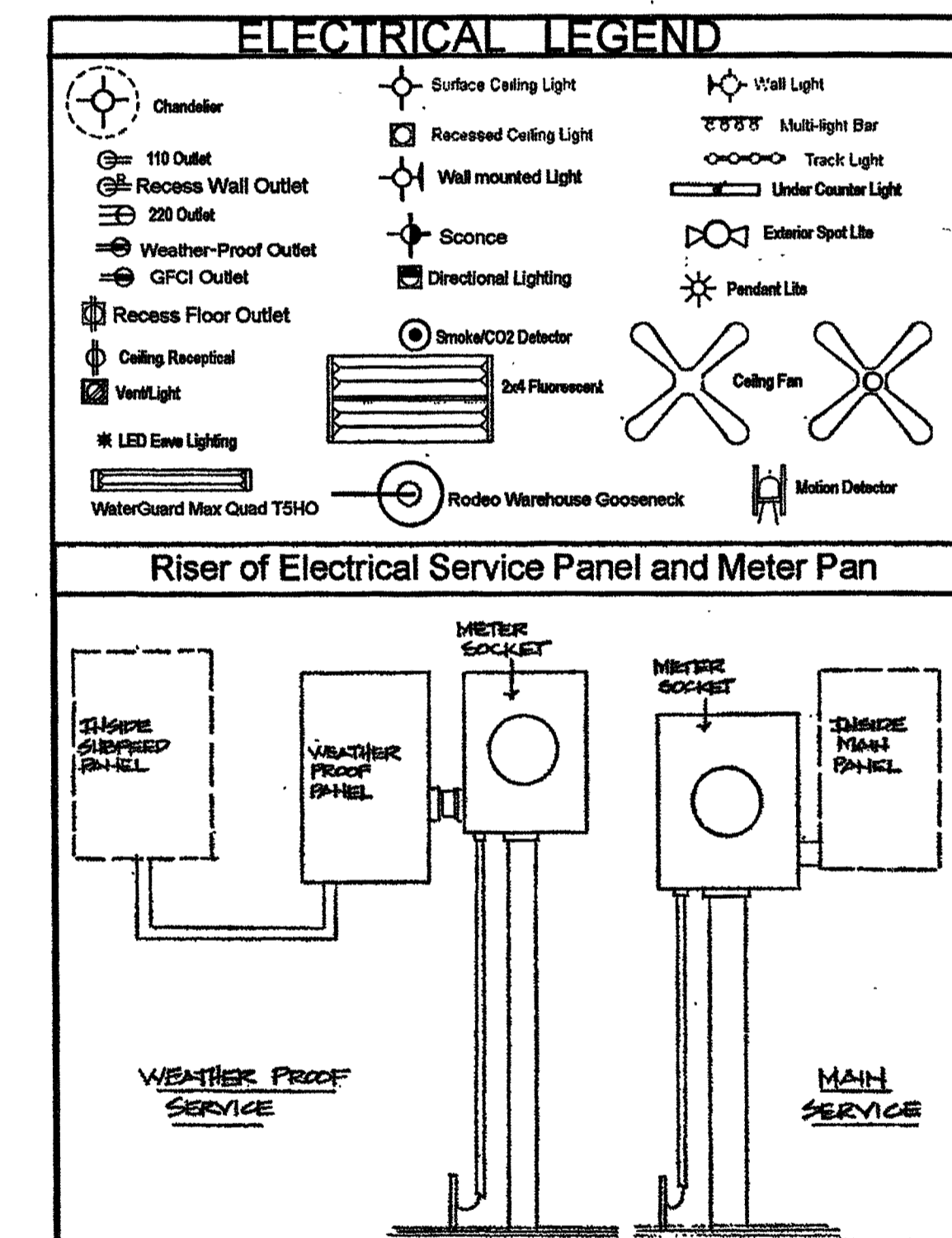


ELECTRICAL PLAN

ELECTRICAL NOTES IRC 2012 ed. Compliance
(SIZE AND CAPACITY TO BE DETERMINED BY OWNER OR CONTRACTOR OR ELECTRICAL ENGINEER)

- E3901.2.1 Spacing. - Receptacles shall be installed so that no point measured horizontally along the floor line of any wall space is more than 6 feet (1829 mm), from a receptacle outlet.
- E3901.2.3 Floor receptacles. Receptacle outlets in floors shall not be counted as part of the required number of receptacle outlets except where located within 18 inches (457 mm) of the wall.
- E3901.2.4 Countertop receptacles. Receptacles installed for countertop surfaces as specified in Section E3901.4 shall not be considered as the receptacles required by Section E3901.2.
- E3901.4.2 Island counter top minimum one receptacle
- E3902.1 Bathroom receptacles - 125 Volt, single-phase 15 and 20 ampere receptacles with ground-fault circuit-interrupter protection.
- E3902.2 Garage and accessory building receptacles - 125 Volt, single-phase 15 and 20 ampere receptacles with ground-fault circuit-interrupter protection.
- E3902.3 Outdoor receptacles - 125 Volt, single-phase 15 and 20 ampere receptacles with ground-fault circuit-interrupter protection.
- E902.6 Kitchen receptacles - 125 Volt, single-phase 15 and 20 ampere receptacles with ground-fault circuit-interrupter protection.
- E3902.7 Laundry, utility and bar sink receptacles - 125 Volt, single-phase 15 and 20 ampere receptacles with ground-fault, circuit-interrupter protection.
- E3902.11 Arc-fault circuit-interrupter protection 120 Volt, single-phase 15 and 20 ampere receptacles installed in all habitable spaces.
- E3901.7 Outdoor outlets shall be installed at the front and back of the dwelling.
- R314.3 Smoke Alarms - shall be installed in each sleeping area and outside each sleeping area and on each additional floor.
- R315 Carbon monoxide alarms - Approved carbon monoxide alarm shall be installed outside each bedroom in dwelling units within which fuel-fired appliances.
- P2720.1 Access panel shall be provided to circulation pumps in accordance with the fixture or pump manufacturer's installation instructions.

1. Electrical service to be _____ Circuit _____ Ampere main located in garage.
2. Service to be #2 Copper from meter to panel.
3. Panel grounded by 2 #6 grounding rods in accordance with Section 250 of the National Electric Code
4. Electrical disconnects at air conditioning cond. Units
5. A.C. Panel Info:
 One 15 Ampere branch circuit for each 600 Sq. Ftg. Lighting and general purpose receptacles.
 Two 20 Ampere branch circuit for small appliances
 One 20 Ampere branch circuit for laundry
 One branch circuit for oven
 One branch circuit for cook top
 One branch circuit for A/C and heating each
 Install 110 Volt receptacle in attic
 Install light in attic with switch at access point
 Kitchen hood must vent to outside.
 Microwave re-circulating ventilation.
 Fireplace rating BTU
 Combustion air for all gas appliances and fireplaces must comply with IFGC303.



COPYRIGHT NOTICE
Plans: © 2016 by Andy McDonald. These plans are protected under federal copyright laws. The original purchaser of these plans is authorized to build one and only one home as shown in the plans. Reproduction by any means, modifications, or use of these plans to construct more than one home unless otherwise specifically authorized is strictly prohibited.

IMPORTANT NOTES
These plans are the sole property of Andy McDonald. All rights are reserved by the designer, and use of these plans for construction purposes, or for reproduction thereof, in whole or in part, is strictly forbidden without compensation and written permission from the designer.
Every effort has been made to insure the accuracy and correctness of these drawings. It is the responsibility of the contractor to recheck these plans for accuracy or error. Any discrepancy should be reported by correction prior to the start of construction.