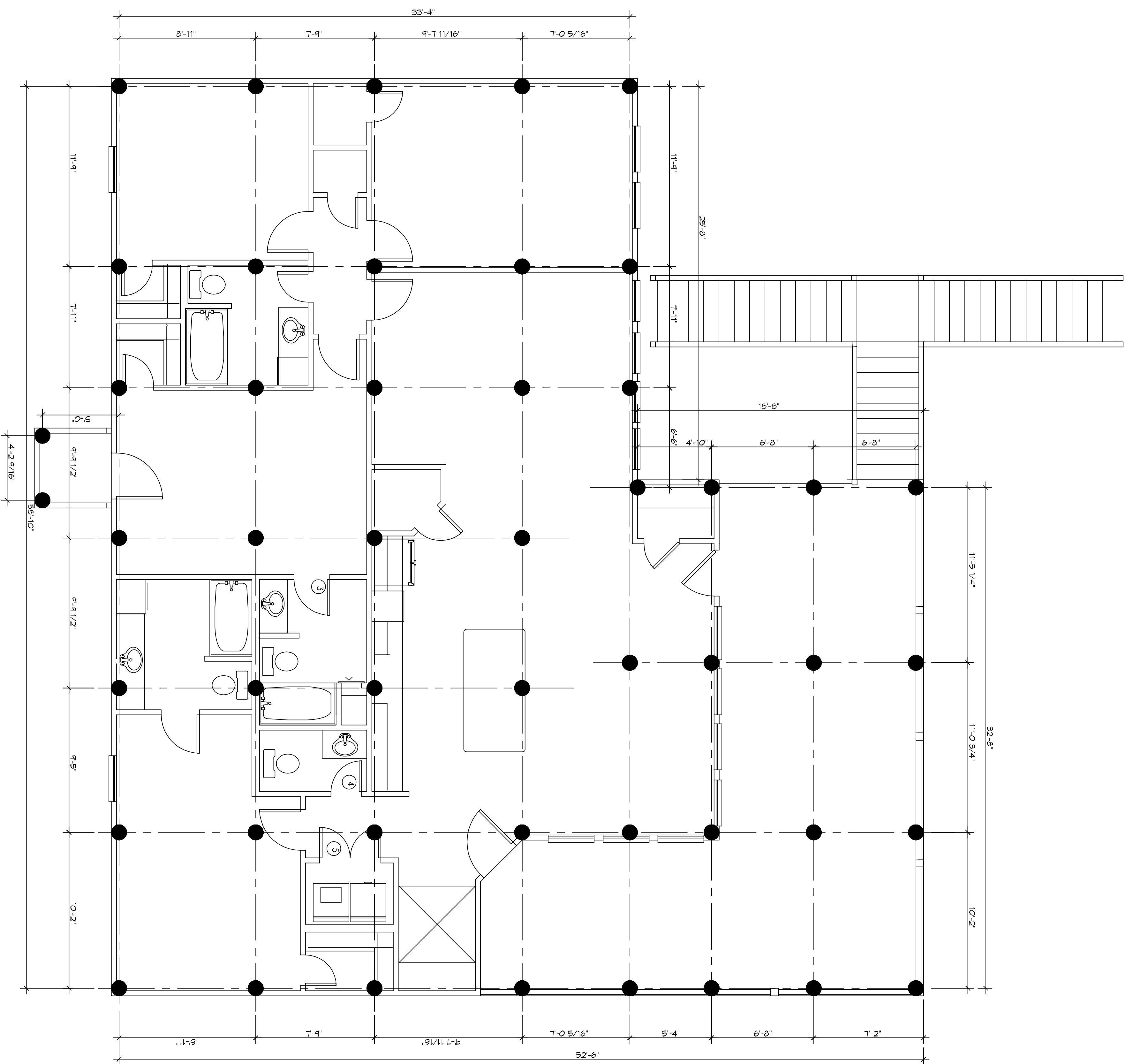


1
3101501

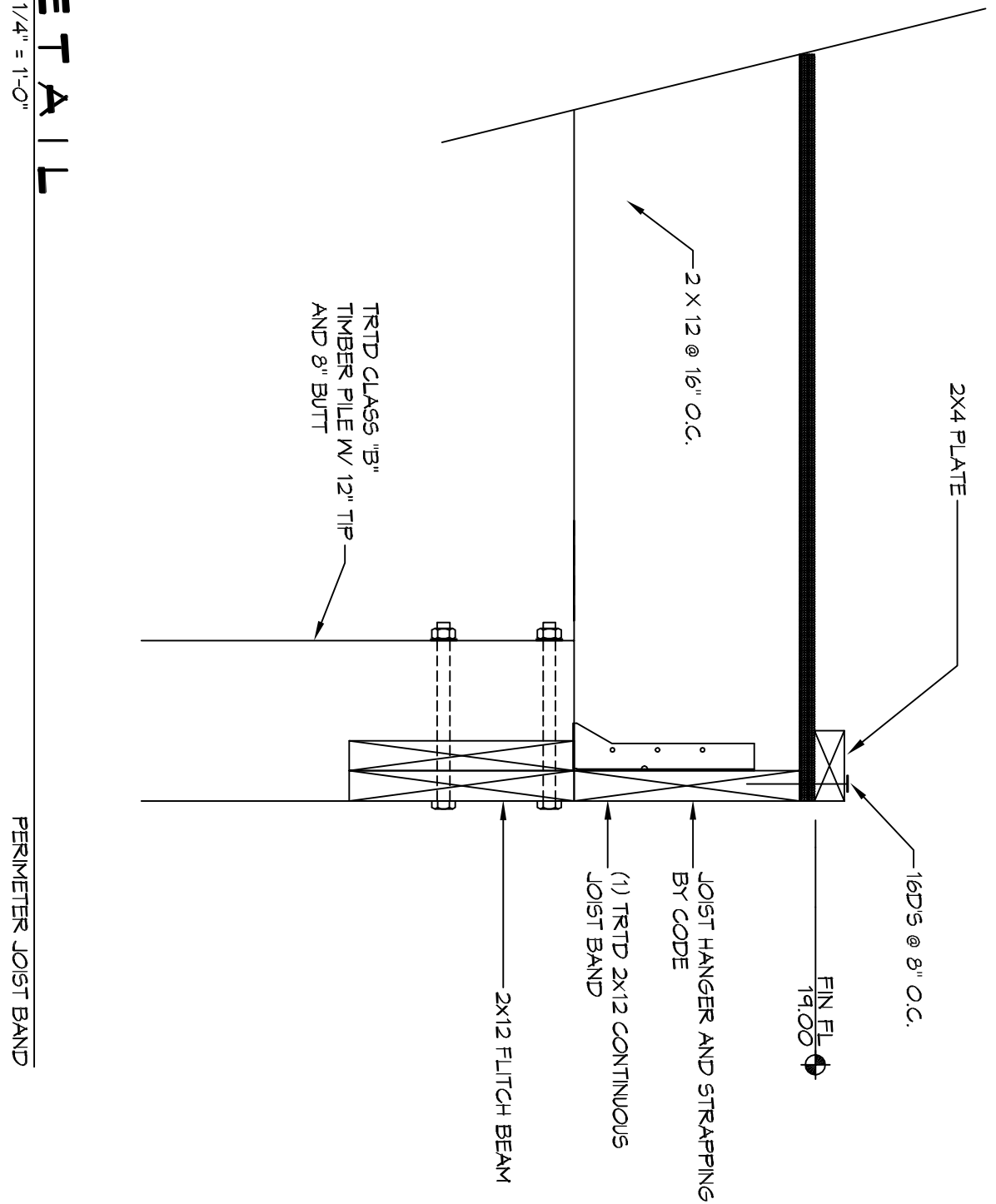
PILING PLAN
SCALE: 1/4" = 1'-0"



PILING PLAN

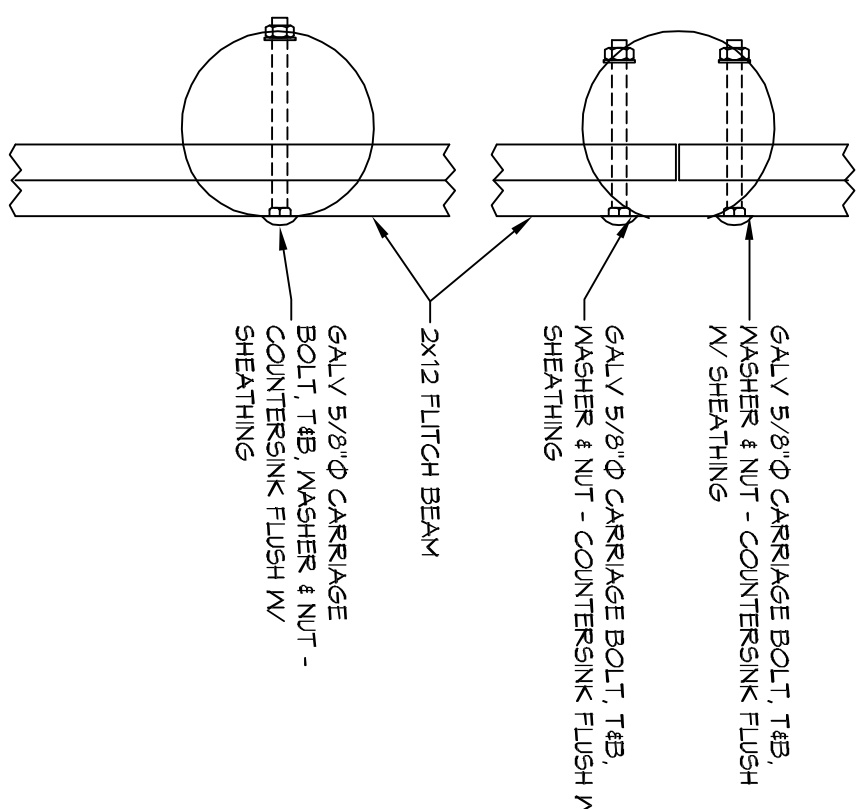
2
3101501

DETAIL
SCALE: 1/4" = 1'-0"



3
3101501

DETAIL
SCALE: 1/4" = 1'-0"



PILING NOTES

1. PILES ARE TO BE CLASS B MODIFIED AND ALL PILES ARE TO BE 40 FT. IN LENGTH WITH A 8 INCH TIP AND 12" BUTT.
2. ALL PILES SHALL BE PRESSURE-TREATED ROUND TIMBER PILES CONFORMING TO ASTM D25.
3. DESIGN LOAD = 6 TONS PER PILE.
4. NO FIELD SUPERVISION OR INSPECTION PROVIDED UNDER THIS SEAL UNLESS OTHERWISE NOTED.
5. PILE LAYOUT MAY BE MODIFIED DUE TO ACTUAL DRIVING CONDITIONS. ANY MODIFICATIONS SHALL BE APPROVED BY THE ENGINEER.
6. A PILE BLOW COUNT LOG OF ALL PILES IS TO BE SUBMITTED TO THE ENGINEER OF RECORD. FAILURE TO SUBMIT SAID LOG WILL RELEASE THE ENGINEER OF ALL RESPONSIBILITY.
7. CONTRACTOR IS RESPONSIBLE FOR THE COMPARISON & VERIFICATION OF PILE LAYOUT DIMENSIONS WITH MOST RECENT ARCHITECTURAL DRAWINGS, ASSURING THAT PILES DO NOT FALL WITHIN LIMITS OF THE DESIGN.
8. USE PROP HAMMER OR SINGLE ACTING AIR HAMMER DELIVERING 1500 FT. LBS OF ENERGY PER BLOW. MAXIMUM HEIGHT OF PROP HAMMER SHALL BE 9 FT. AT MINIMUM OF 25 BLOWS PER FOOT. IF THE DROP EXCEEDS 9 FT., CONTACT ENGINEER FOR INSTRUCTIONS.

DAMMON
ENGINEERING, INC.

554 Old Spanish Trail
Slidell, LA 70458
PH: 985.649.5832

www.dammonengineering.com
info@dammonengineering.com
Fax: 985.641.5950

REVISIONS		DATE
#	DESCRIPTION	

WALTON CAMERON
LOT 20, HAY 190
SLIDELL, LOUISIANA 70458
JOB No: 2251 DATE: 02-06-11
DRAWN BY: CKD CHECKED BY: BAM

5101