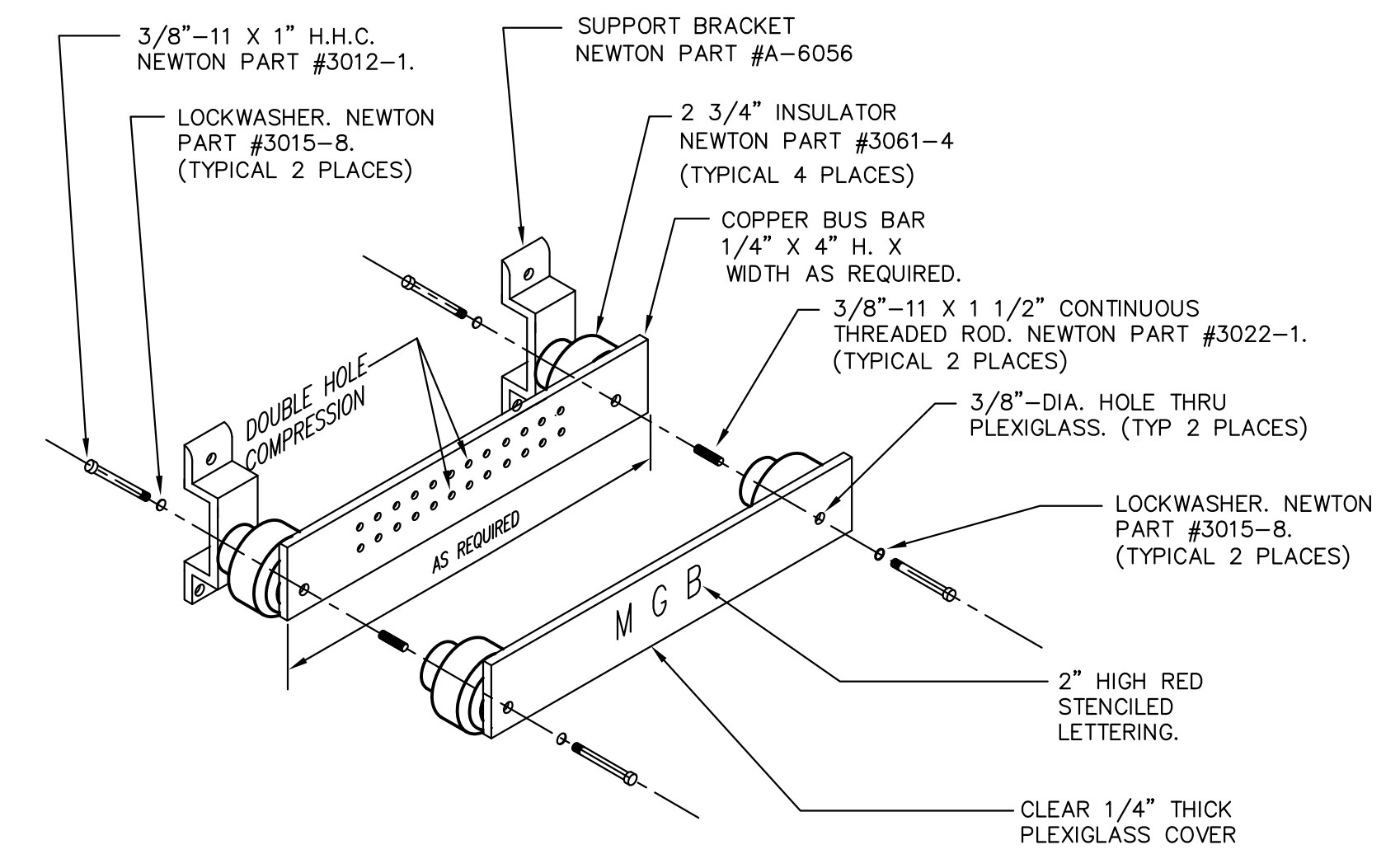


**ELECTRICAL GROUNDING DIAGRAM**  
SCALE: NONE

1  
E-9.1



- NOTES:**
- BUS BARS OVER 20" IN LENGTH REQUIRE A MINIMUM OF ONE ADDITIONAL 2 3/4" INSULATOR AND SUPPORT BRACKET.
  - PROVIDE PLASTIC LAMINATE LABEL FOR EACH GROUND CONDUCTOR. MOUNT LABEL ABOVE COMPRESSION ON GROUND BUS.

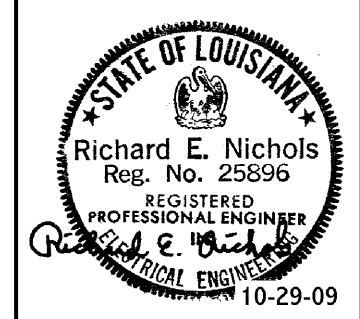
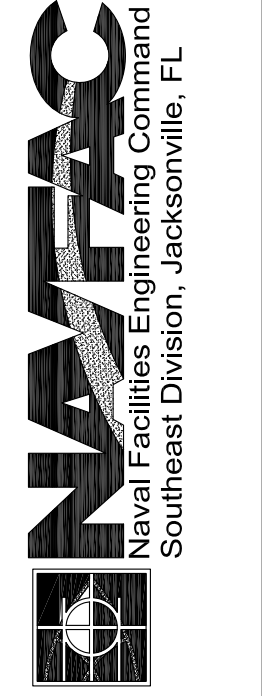
**2 BUS BAR DETAIL**  
SCALE: NONE

**SPECIFIC NOTES:**

- USING A #3/0 GROUND CONDUCTOR, GROUND NEUTRAL BUS AND GROUND BUS OF PANEL "MDP-ADM" TO SERVICE ENTRANCE GROUND BAR.
- USING A #3/0 GROUND CONDUCTOR, GROUND SERVICE ENTRANCE GROUND BAR TO THREE 3/4" X 10' COPPER CLAD STEEL GROUND ROD, COLD WATER PIPE, AND BUILDING STEEL. SPACE GROUND RODS AT LEAST 10' APART. ALSO CONNECT TO GROUND ROD FOR LIGHTNING PROTECTION SYSTEM NEAR COLUMN LINE K AND 9.2. THIS GROUND ROD CAN COUNT AS ONE OF THE THREE GROUND ROD MENTIONED ABOVE.
- USING A #6 GROUND CONDUCTOR, BOND TRANSFORMER X0 WITH SECONDARY NEUTRAL CONDUCTOR, AND FEEDER GROUND CONDUCTOR TO SERVICE ENTRANCE GROUND BAR. ROUTE GROUND CONDUCTOR IN A 1" CONDUIT FOR PHYSICAL PROTECTION.
- USING A #2 GROUND CONDUCTOR, BOND TRANSFORMER X0 WITH SECONDARY NEUTRAL CONDUCTOR, AND FEEDER GROUND CONDUCTOR TO SERVICE ENTRANCE GROUND BAR. ROUTE GROUND CONDUCTOR IN A 1" CONDUIT FOR PHYSICAL PROTECTION.
- USING A #6 GROUND CONDUCTOR BOND TELECOMMUNICATION MAIN BACKBOARD TO TELECOMMUNICATION MAIN GROUND BUSBAR.
- USING A #6 GROUND CONDUCTOR BOND CATV BACKBOARD TO TELECOMMUNICATION MAIN GROUND BUSBAR.
- USING A #6 GROUND CONDUCTOR BOND TELECOMMUNICATION MAIN GROUND BUSBAR TO SERVICE ENTRANCE GROUND BUSBAR. ROUTE GROUND CONDUCTOR IN A 1" CONDUIT FOR PHYSICAL PROTECTION.
- AT PAD MOUNTED TRANSFORMER INSTALL FOUR 3/4" X 10' COPPER CLAD GROUND RODS, ONE AT EACH CORNER OF TRANSFORMER SLAB. ROUTE A 3/0 BARE COPPER GROUND CONDUCTOR BETWEEN EACH GROUND ROD AND USING GROUND CLAMP CONNECT TO EACH GROUND ROD. FROM ONE OF THE GROUND RODS ROUTE A 3/0 BARE COPPER GROUND CONDUCTOR TO THE PRIMARY SIDE COMPARTMENT AND BOND TO THE TRANSFORMER TANK. FROM ANOTHER GROUND ROD ROUTE A 3/0 BARE COPPER GROUND CONDUCTOR TO THE SECONDARY SIDE COMPARTMENT AND BOND TO THE TRANSFORMER TANK. USE THE GROUND PADS OR NUTS AT BASE OF THE TANK WALL IN BOTH THE HIGH AND LOW VOLTAGE COMPARTMENTS.
- SEE GROUND BUS BAR DETAIL ON THIS SHEET FOR MORE INFORMATION.
- USING A #8 GROUND CONDUCTOR BOND EACH ELECTRONIC REPAIR BENCH TO GROUND BUSBAR.

REV.	DESCRIPTION	DATE	APPROVED
0	FINAL DESIGN	10/29/09	P.S.

Belle Chasse, Louisiana  
MAS JRB New Orleans  
NAVAIRSEFAC CALIBRATION BLDG.  
ELECTRICAL GROUNDING DIAGRAM  
DATE: AUGUST 14, 2008  
ED FOR COMMANDER, NAVFAC



© 2009 IMC 1734  
CONSULTING ENGINEERS  
INC.  
3120 20th STREET  
METAIRIE, LOUISIANA 70002

FINAL DESIGN  
Oct 29, 2009

WALDEMAR S. NELSON AND COMPANY  
ENGINEERS AND ARCHITECTS  
1200 ST. CHARLES AVE NEW ORLEANS, LA.

RECORD DRAWING DATE	XX-XX-20XX
CODE I.D. NO.	D
DRAWING SIZE:	D
SPEC. NO.06-	
CONSTRN. CONTR. NO.	N62467
NAVFAC DRAWING NO.	15030975
SHEET	OF

E-9.1