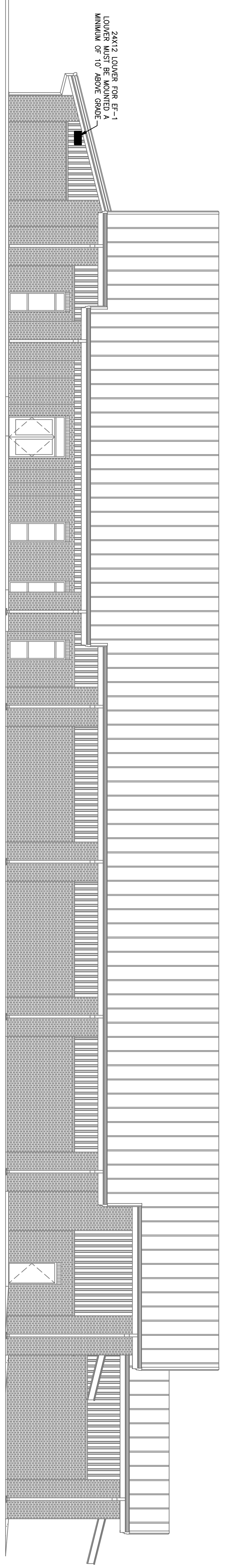


**ELEVATION - WEST**

SCALE 1/8" = 1'-0"

1  
M-05.1



**ELEVATION - SOUTH**

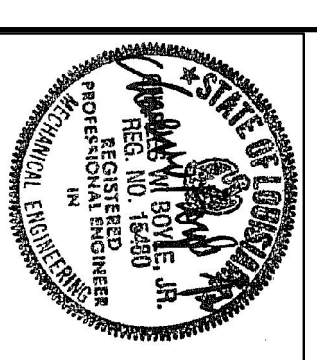
SCALE 1/8" = 1'-0"

2  
M-05.1

**HUSEMAN & Associates**  
 ARCHITECTURAL & MECHANICAL PLUMBING ENGINEERING  
 3925 N. H. SERVICE ROAD  
 SUITE 2019, METairie, LA 70002  
 Job No. 090501  
 Drawn By: RP  
 (504) 456-3119  
 FAX (504) 456-3122  
 Designed By: JL  
 Checked By: GB

**WALDEMAR S. NELSON AND COMPANY**  
 ENGINEERS AND ARCHITECTS  
 1200 ST. CHARLES AVE.  
 NEW ORLEANS, LA.

RECORD DRAWING DATE: 10/23/09  
 CODE ID NO.: 090501  
 DRAWING SIZE: D  
 SPEC. NO./OR: -  
 CONSTR. CONTR. NO.: -  
 NAVFAC DRAWING NO.: 13020929  
 SHEET 10 OF 13  
**M-05.1**



**NAVFAC**  
 Naval Facilities Engineering Command  
 Southeast Division, Jacksonville, FL

NAS JRB New Orleans Belle Chasse, Louisiana

**NAVAIRSEFAC CALIBRATION BLDG.  
HVAC ELEVATIONS**

REV.	DESCRIPTION	PREP BY	DATE	APPROV.
0	FINAL DESIGN	RP	10/23/09	CB

APPROVED: DATE: AUGUST 22, 2008 EPD FOR COMMANDER, NAVFAC

**DRAWING REVISIONS**

REV.	DESCRIPTION	PREP BY	DATE	APPROV.
0	FINAL DESIGN	RP	10/23/09	CB

**BROADMOOR**  
 BUILDING by DESIGN  
**BROADMOOR, L.L.C.**  
 2740 North Amoult Road  
 Metairie, Louisiana 70002  
 www.broadmoorllc.com