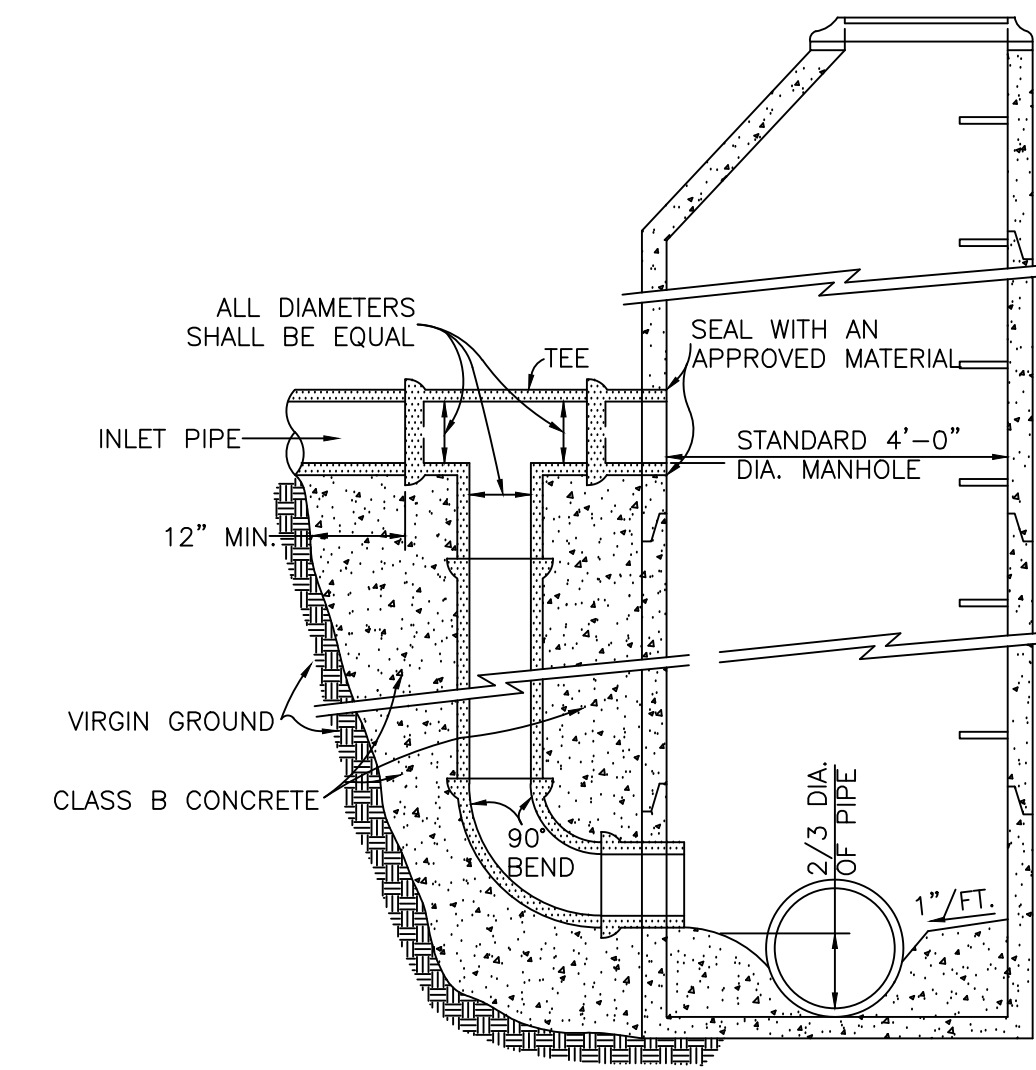
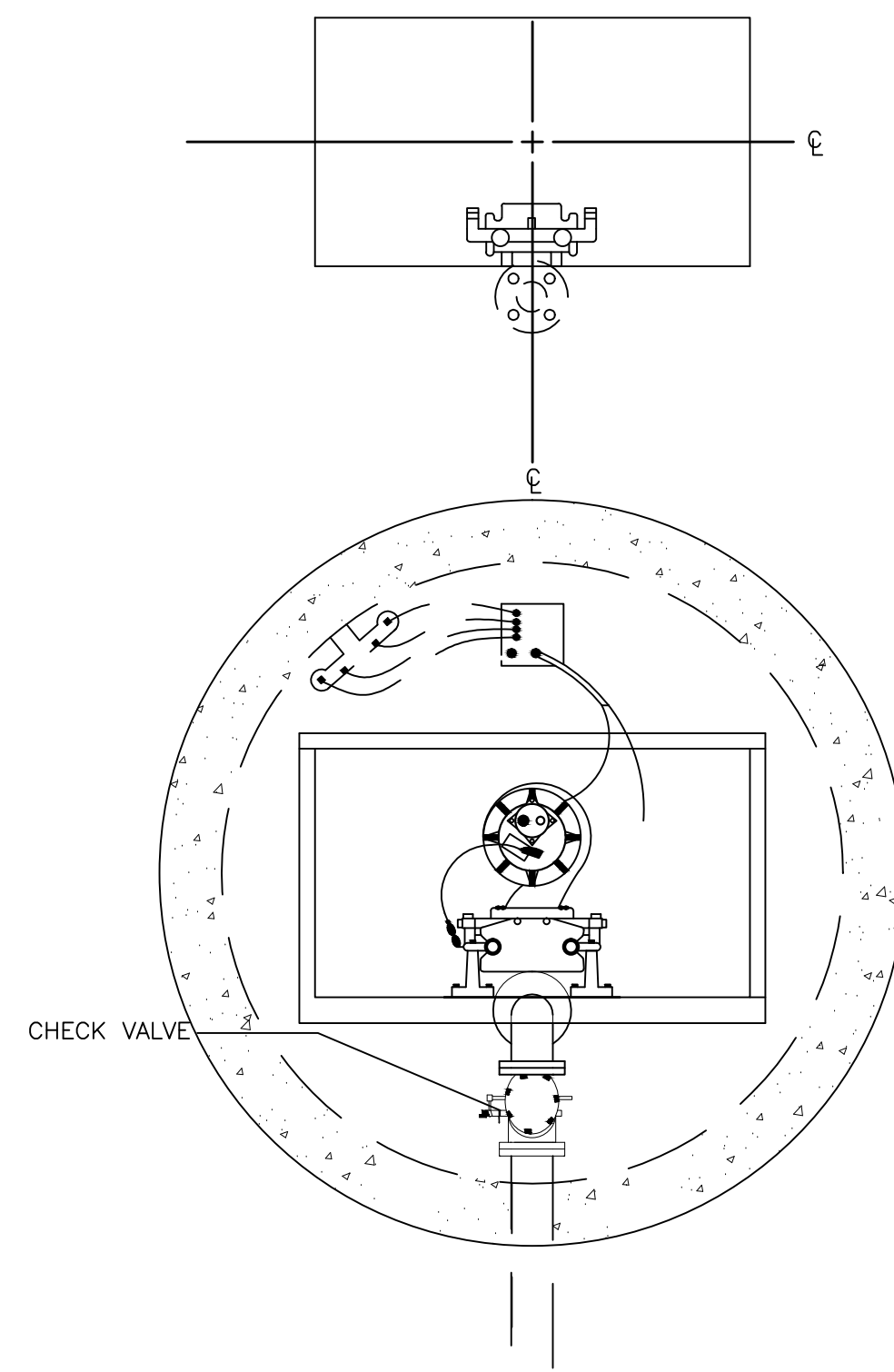
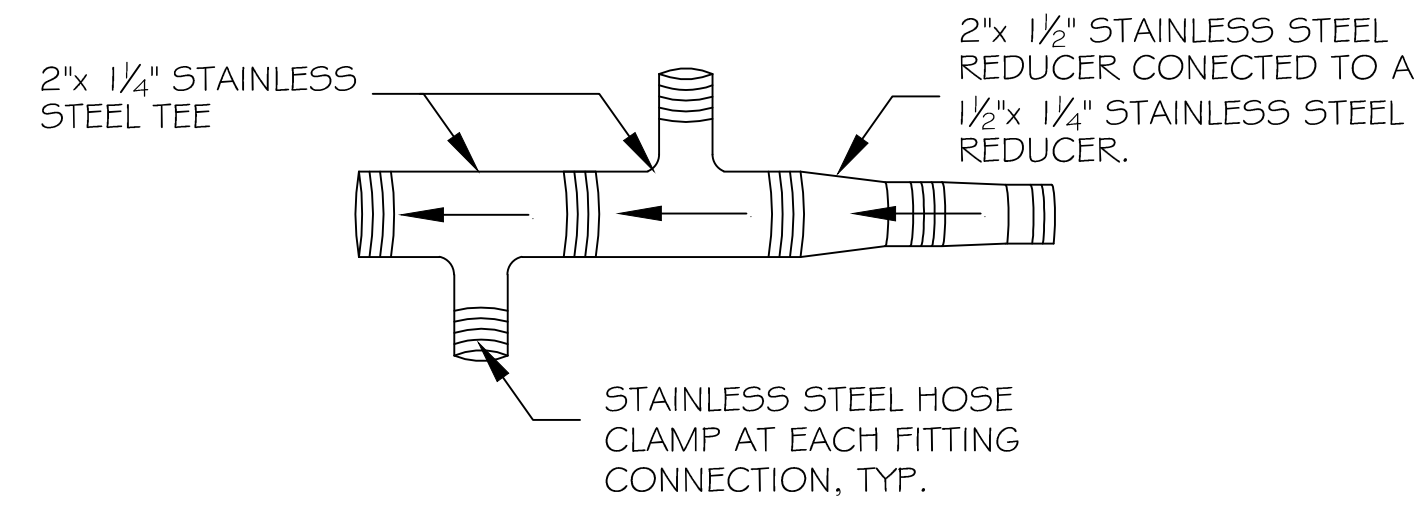


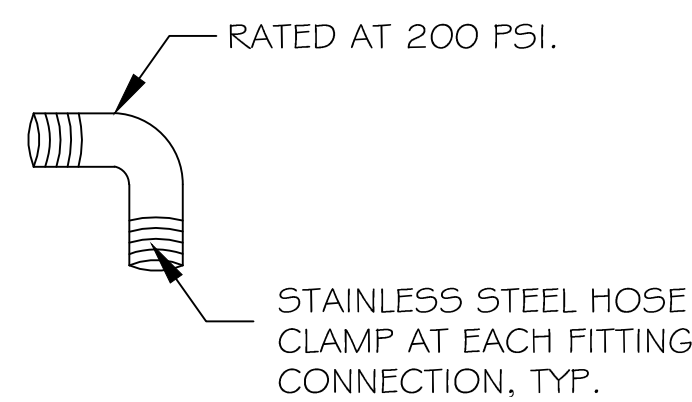
SIMPLEX LIFT STATION DETAIL 10
N.T.S. C6



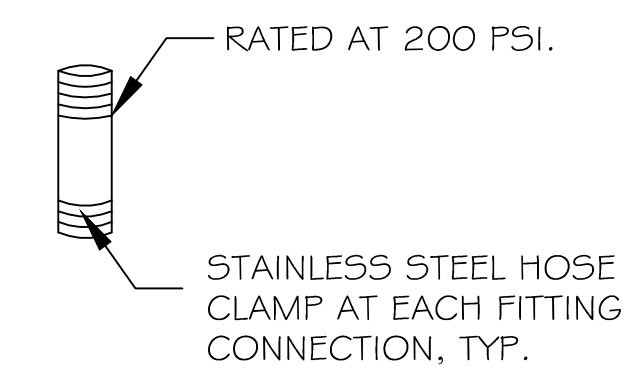
DROP SEWER MANHOLE, TYP 11
N.T.S. C6



MULIPLE FORCE MAIN CONNECTIONS 12
N.T.S. C6



FORCE MAIN 1/4" POLYPROPYLENE ELBOW 13
N.T.S. C6



FORCE MAIN 1/4" POLYPROPYLENE COUPLING 14
N.T.S. C6

SEWER SYSTEM RENOVATION
BRIDGE CITY CENTER FOR YOUTH
PROJ. NO. 08-403-11-01 PART 1
3225 RIVER ROAD
BRIDGE CITY, LA 70004

JOB No: 2156 DATE: 6/10/2014
DRAWN BY: DPD CHECKED BY: BM

| # | DESCRIPTION | DATE |
|---|-------------|------|
| | | |
| | | |
| | | |
| | | |
| | | |
| | | |
| | | |
| | | |
| | | |
| | | |

SEWER
DETAILS
#2

SHEET No: 07 OF 08

C-6

DAMMON
ENGINEERING, INC.
Architects & Engineers

dammonengineering.com
PHONE: 985-649-9832
FAX: 985-641-5950

CHIEF ENGINEER: BRIAN MISTICH, P.E.
CHIEF ARCHITECT: KEVIN KIRCHEN
554 OLD SPANISH TRAIL
SUDELL, LA 70456