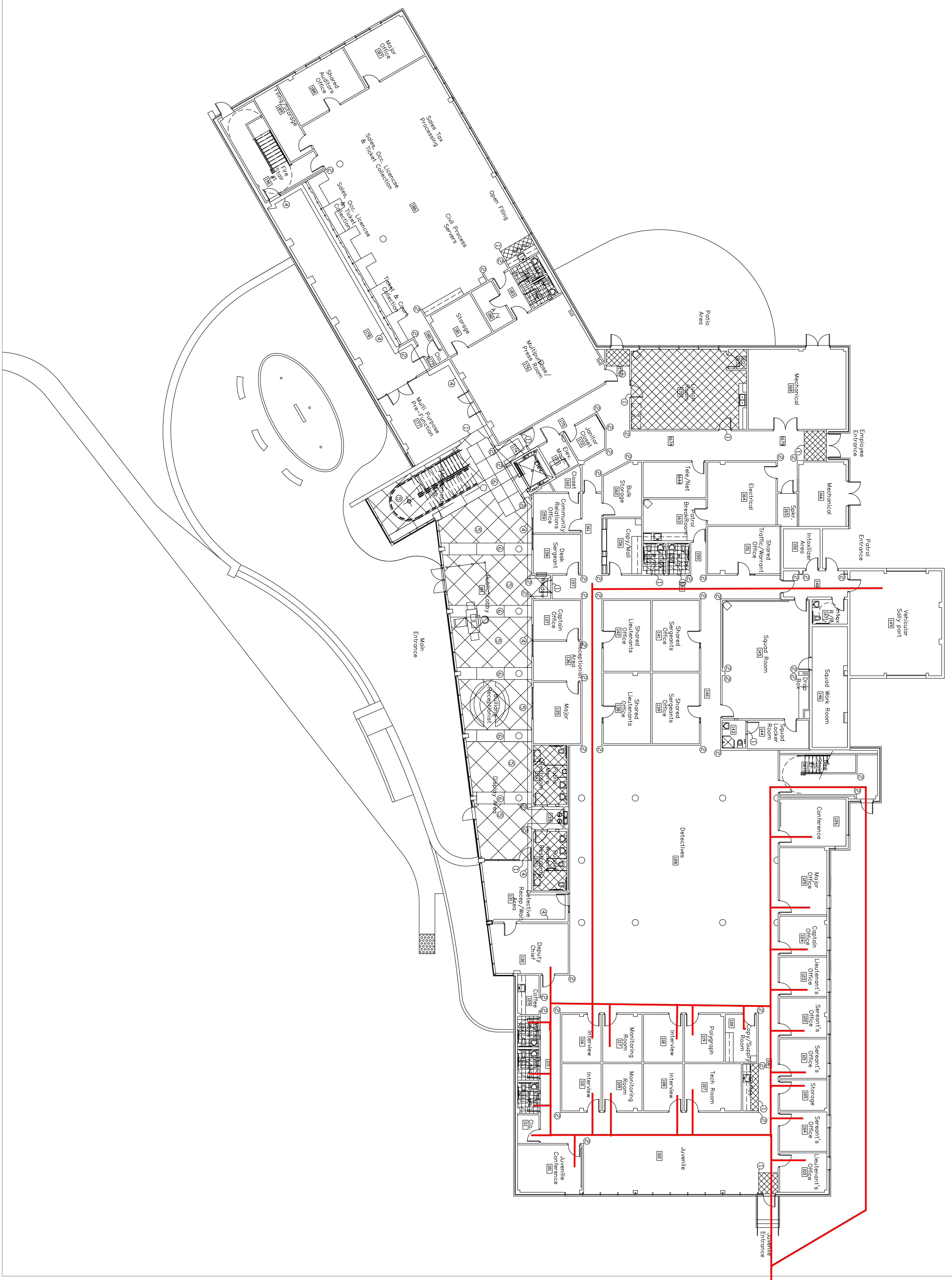


Richard C. Lambert
 2111 Gateway Blvd
 Metairie, LA 70002
 Phone / Fax: 504.885.8440
 504.885.8447
 www.rclconsulting.com

P.A.S. Interiors, LLC
 A Professional Design or Consulting Company
 2111 Gateway Blvd
 Metairie, LA 70002
 Phone / Fax: 504.885.8440
 504.885.8447
 www.pasinteriors.com

This drawing was prepared by the architect or interior designer and is not to be used for any other purpose without the written consent of the architect or interior designer.

RCLC
 Project Number: 0887
 Date Issued: 05/15/07
 Drawn By: VFA / JMS / PAS
 Checked By: RLE / LIS
 Revisions:



ST. TAMMANY PARISH SHERIFF'S OFFICE
 BROWNSWITCH ROAD
 SLIDELL, LOUISIANA

CONSTRUCTION DOCUMENTS

