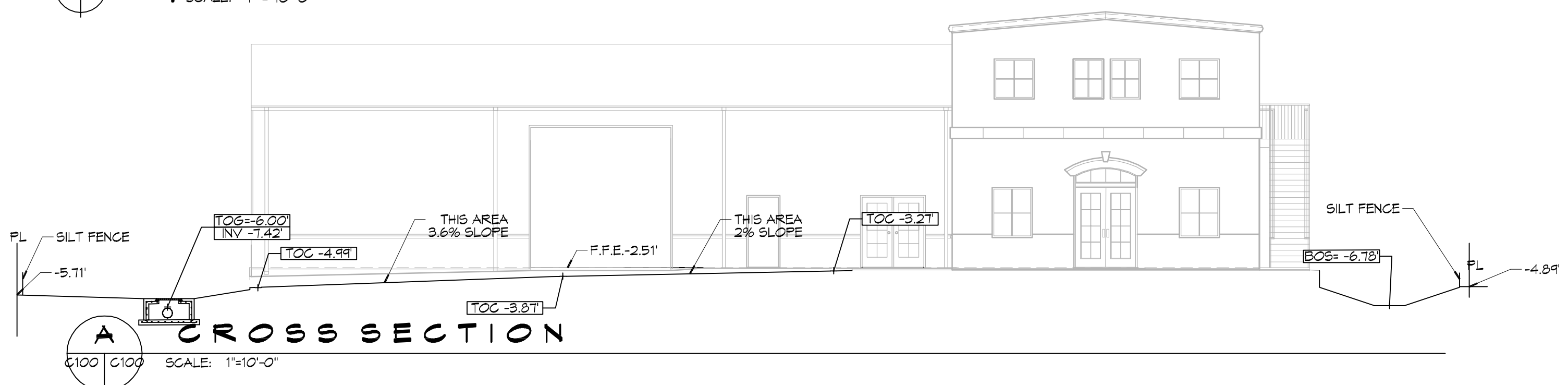
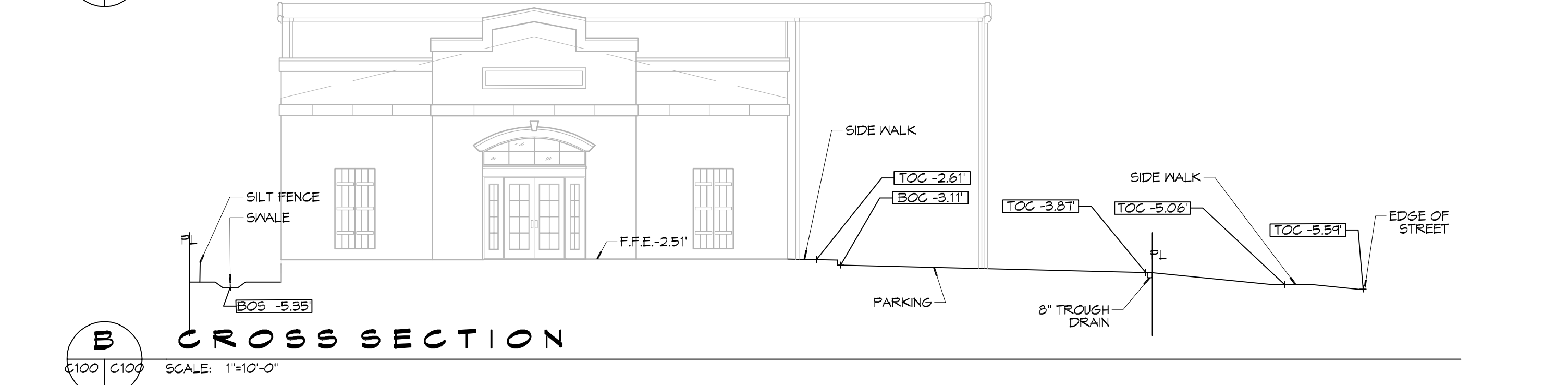


1 PAVING & DRAINAGE PLAN
SCALE: 1" = 10'-0"

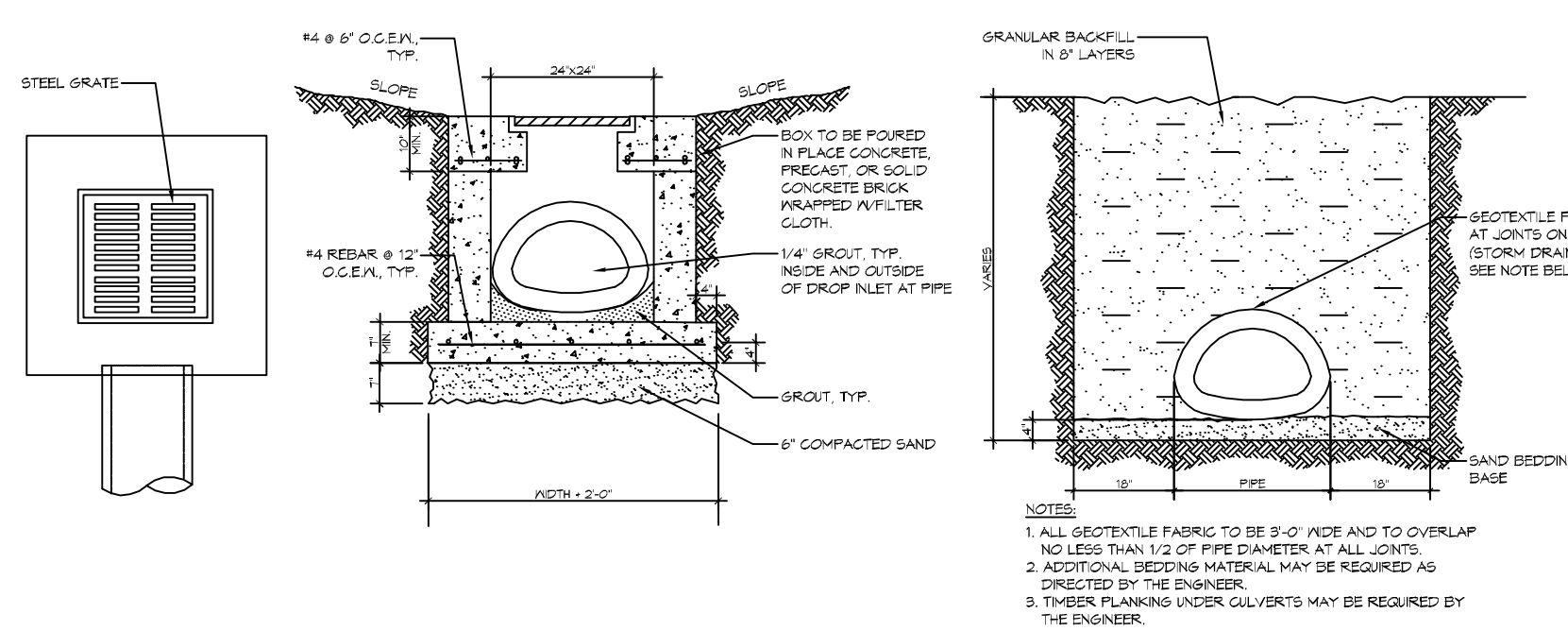


A CROSS SECTION
SCALE: 1" = 10'-0"

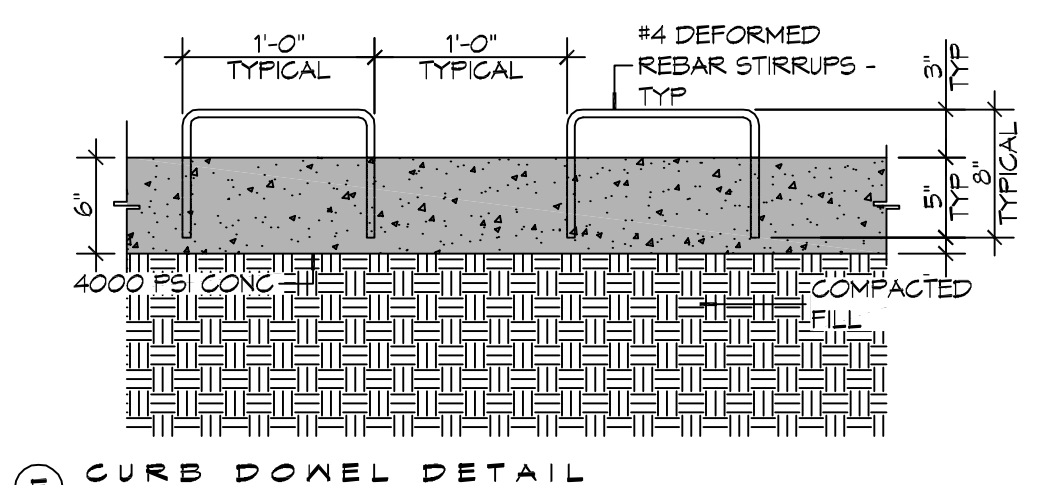


B CROSS SECTION
SCALE: 1" = 10'-0"

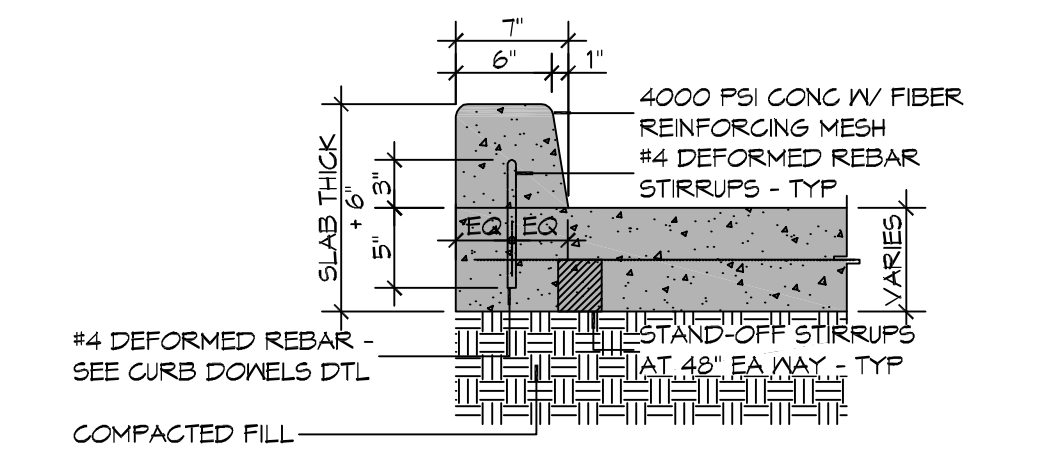
STORM WATER MANAGEMENT
DETENTION REQUIRED :
 1.25" / S/F X 14,313 S.F. = 1,490.94 CU FT
DETENTION PROVIDED :
 15.58 S.F. X 96 L.F. = 1,495.68 CU FT



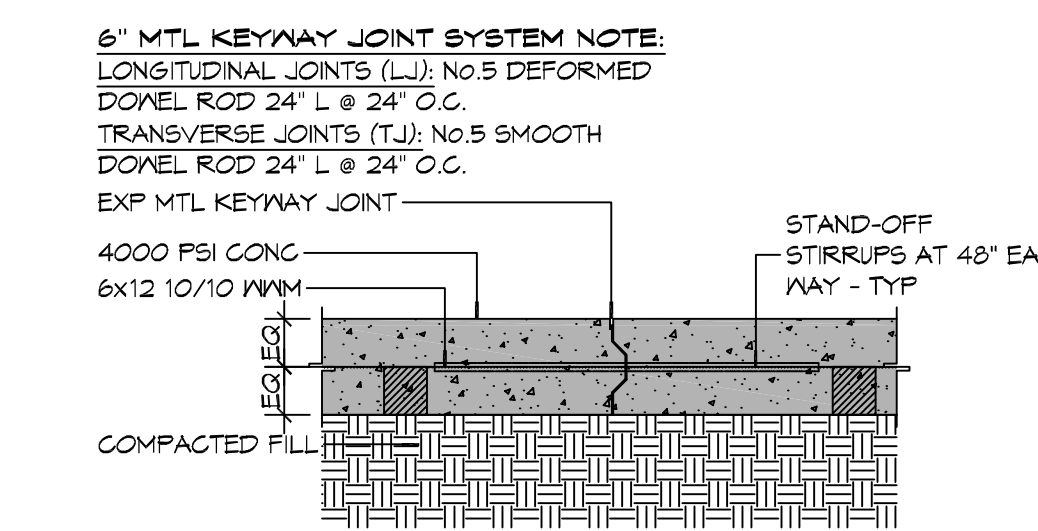
2 TYPICAL DROP INLET
SCALE: 3/8" = 1'-0"



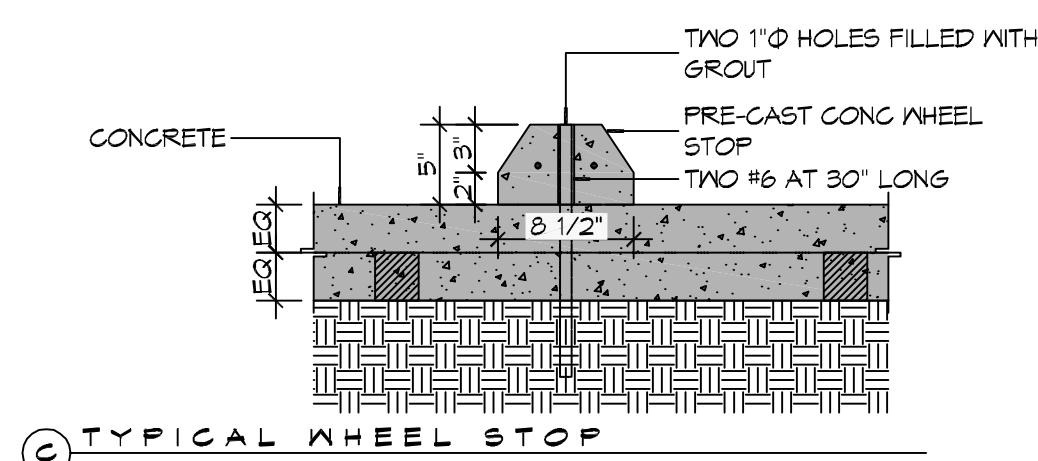
C CURB DONEL DETAIL



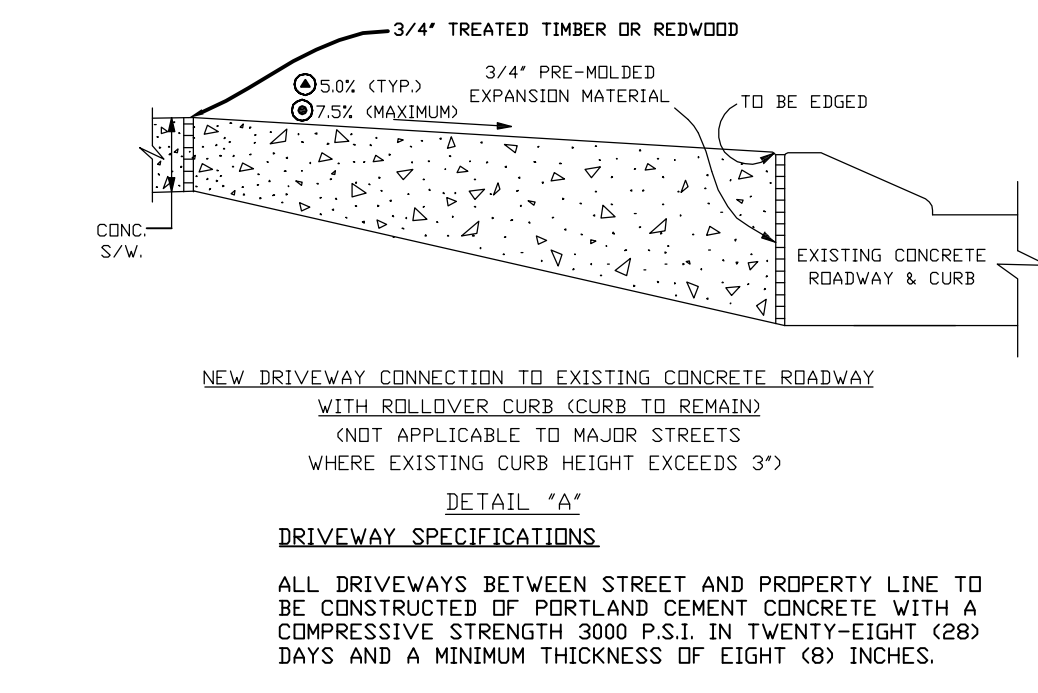
E TYPICAL CURB



D TYPICAL PAVEMENT JOINT



C TYPICAL WHEEL STOP



A DRIVEWAY ROLLER CURB
3 PAVING DETAILS
SCALE: 1" = 1'-0"

GENERAL PAVING NOTES

- ALL NEW CONCRETE SHALL HAVE A MINIMUM COMPRESSIVE STRENGTH OF 4,000 PSI AT 28 DAYS AND A MINIMUM THICKNESS OF 6". CONCRETE MIX SHALL BE IN ACCORDANCE WITH THE LATEST REVISION OF ASTM C-150 TYPE 1.
- CONCRETE PAVING THICKNESS SHALL VARY AS FOLLOWS:
 - APRONS & LOADING AREAS = 8" THICKNESS (INDICATED WITH CROSS HATCH WHERE OCCURS)
 - DRIVE LANES & PARKING AREAS = 6" THICKNESS (STANDARD UNO)
 - ALL REINFORCING STEEL SHALL MEET ASTM-A615 (GRADE 60).
 - ALL REINFORCING STEEL SHALL BE SECURELY SUPPORTED TO PREVENT BOTH VERTICAL AND HORIZONTAL MOVEMENT DURING CONCRETE PLACEMENT. ALL CONTROL AND EXPANSION JOINTS SHALL BE LOCATED AND INSTALLED AS SHOWN ON THE PAVING PLAN AND IN ACCORDANCE WITH THE MANUFACTURER'S RECOMMENDATIONS.
 - ALL SUB GRADE FILL SHALL BE SELECT GRANULAR MATERIAL COMPACTED TO 95% STANDARD PROCTOR DENSITY IN A MAXIMUM OF 6" LIFTS.
 - ANY WORK WITHIN THE ROADWAY OR ADJACENT TO THE ROADWAY CAUSING AN INTERFERENCE TO VEHICULAR TRAFFIC MUST CONFORM TO THE REQUIREMENTS SET FORTH BY THE UNIFORM MANUAL OF TRAFFIC CONTROL DEVICES OF THE STATE OF LOUISIANA. THE CONTRACTOR MUST FURNISH ALL NECESSARY TRAFFIC SIGNS AND/OR BARRICADES AND MAINTAIN THEM DURING CONSTRUCTION ACTIVITY.

PAVING LEGEND

- TOG XXXX - NEW TOP OF CONCRETE ELEVATION
- TOG XXXX - NEW TOP OF GRATE ELEVATION
- INV XXXXX - NEW INVERT OF PIPE ELEVATION
- LI - LONGITUDINAL JOINTS (LI) = NO. 5 DEFORMED DONEL RODS 24" LONG @ 24" O. C.
- TJ - TRANSVERSE JOINTS (TJ) = NO. 5 SMOOTH DONEL RODS 24" LONG @ 24" O. C.
- PARKING WHEEL STOP
- NEW CATCH BASIN
- 0000.00 - EXISTING TOPO

STORMWATER CONTROL LEGEND

- SILT FENCE
- ALL EXISTING DOWN SPOUTS SHEET FLOW ONTO GROUND

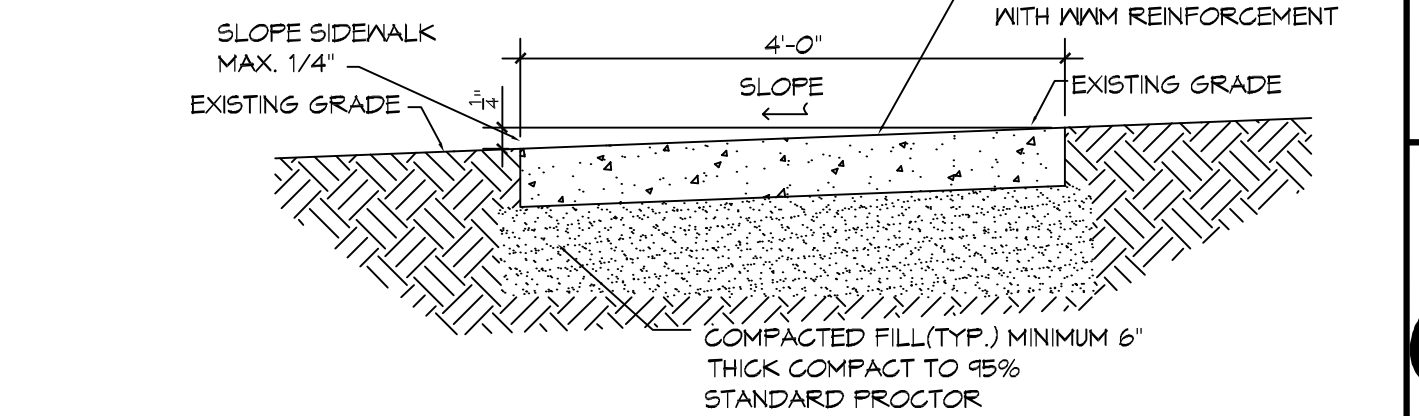
STORMWATER

- DESIGNING PLANTING AREAS, ESPECIALLY THOSE BY PASSING TREATMENT SYSTEMS, TO ENCOURAGE INFILTRATION TO THE DEGREE POSSIBLE.
- IN ORDER TO ENCOURAGE INFILTRATION OF STORMWATER AND TO MINIMIZE THE MIGRATION OF SEDIMENTS, THE FINISHED GRADE FOR ALL LANDSCAPING AREAS SHALL BE SET 3 INCH AMP. SLOPE MINIMUM BELOW SURROUNDING HARDSCAPE CONTAINMENTS (CURBS, SIDEWALKS, FOUNDATIONS ETC.). THIS STANDARD MAY BE WAIVED IF NECESSARY TO PROMOTE THE PRESERVATION OF TREES SHOWN AS SUCH.
- PURSUANT TO BUILDING CODE SECTION 121.17, PRIOR TO ISSUANCE OF A CERTIFICATE OF OCCUPANCY, POST CONSTRUCTION CERTIFICATION INCLUDING AS-BUILT DRAWINGS, AFFIDAVIT FROM DESIGNER/S, AND PERFORMANCE BOND BASED UPON THE ACTUAL COST OF CONSTRUCTION MUST BE SUBMITTED FOR APPROVAL AFTER FINAL INSPECTION THESE DOCUMENTS MUST BE RECORDED WITH THE CIVIL DISTRICT CLERK COURT.

HARD & GREEN SPACE

EXISTING AREA = 14,313 SQ. FT.
 BUILDING AREA = 6,011 SQ. FT.
 PARKING AREA & SIDEWALKS = 2,480 SQ. FT.
 GREEN AREA = 5,918 SQ. FT.
 TOTAL AREA = 14,313 SQ. FT.

4 TYPICAL SWALE DETAIL
SCALE: NTS



5 TYPICAL SIDEWALK DETAIL
SCALE: NTS

DAMMON ENGINEERING, INC.
 LOUISIANA & MISSISSIPPI
 Chief Engineer: Brian Michich, PE
 554 Old Spanish Trail
 Slidell, LA 70688
 Phone: 858.649.3622
 www.dammonengineering.com
 info@dammonengineering.com

DATE	REVISIONS	DESCRIPTION

SEAL:

NEW FACILITY
NEW ORLEANS ASSOCIATION
 5710 GENERAL HAIG STREET
 NEW ORLEANS, LA 70124
 JOB NO: 2433 DATE: 3/25/2021
 DRAWN BY: C4D CHECKED BY: C4D
 SHEET TITLE: PAVING & DRAINAGE PLAN
 SHEET NUMBER: **C100**
 SHEET No: 1 of 1