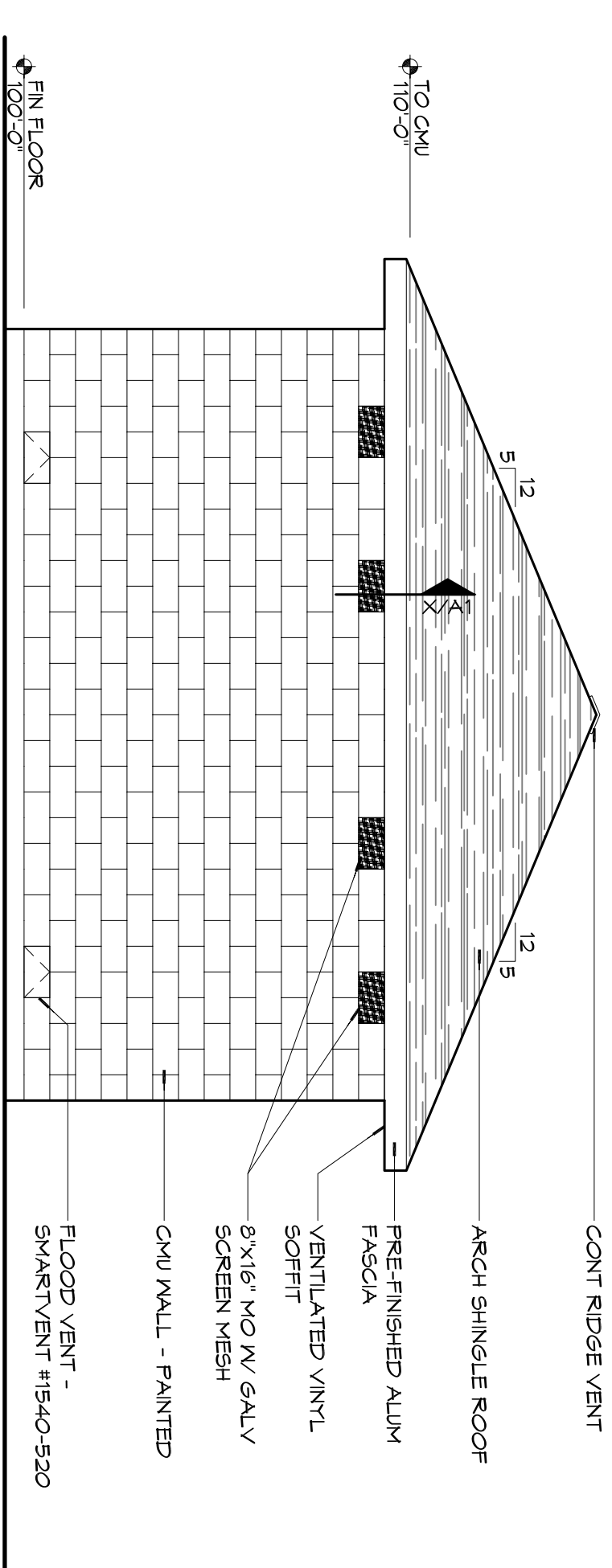
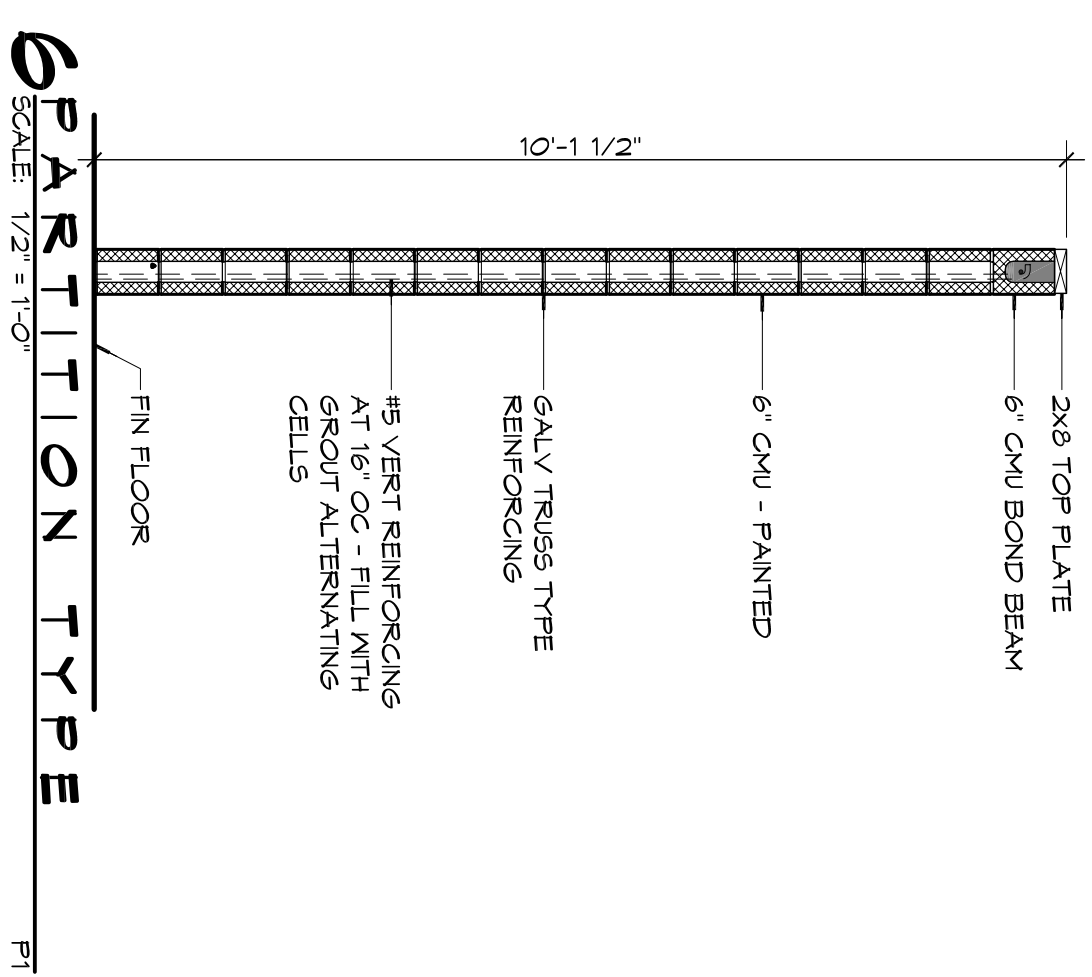


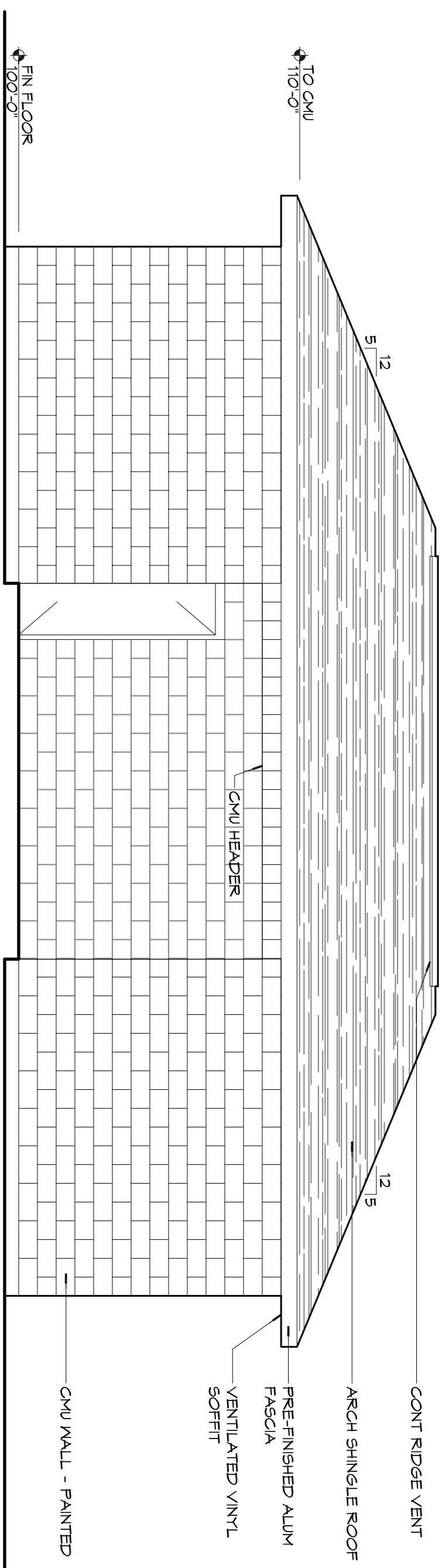
EXTERIOR ELEVATION
SCALE: 1/4" = 1'-0"



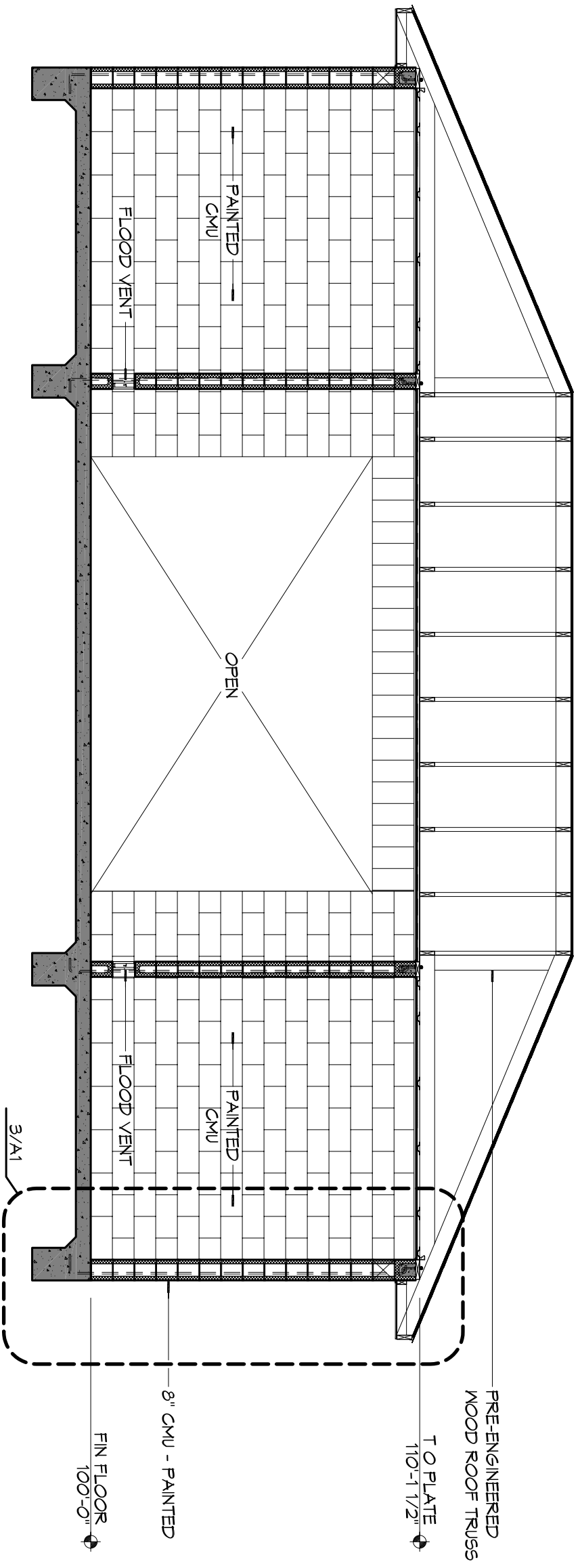
EXTERIOR ELEVATION
SCALE: 1/4" = 1'-0"



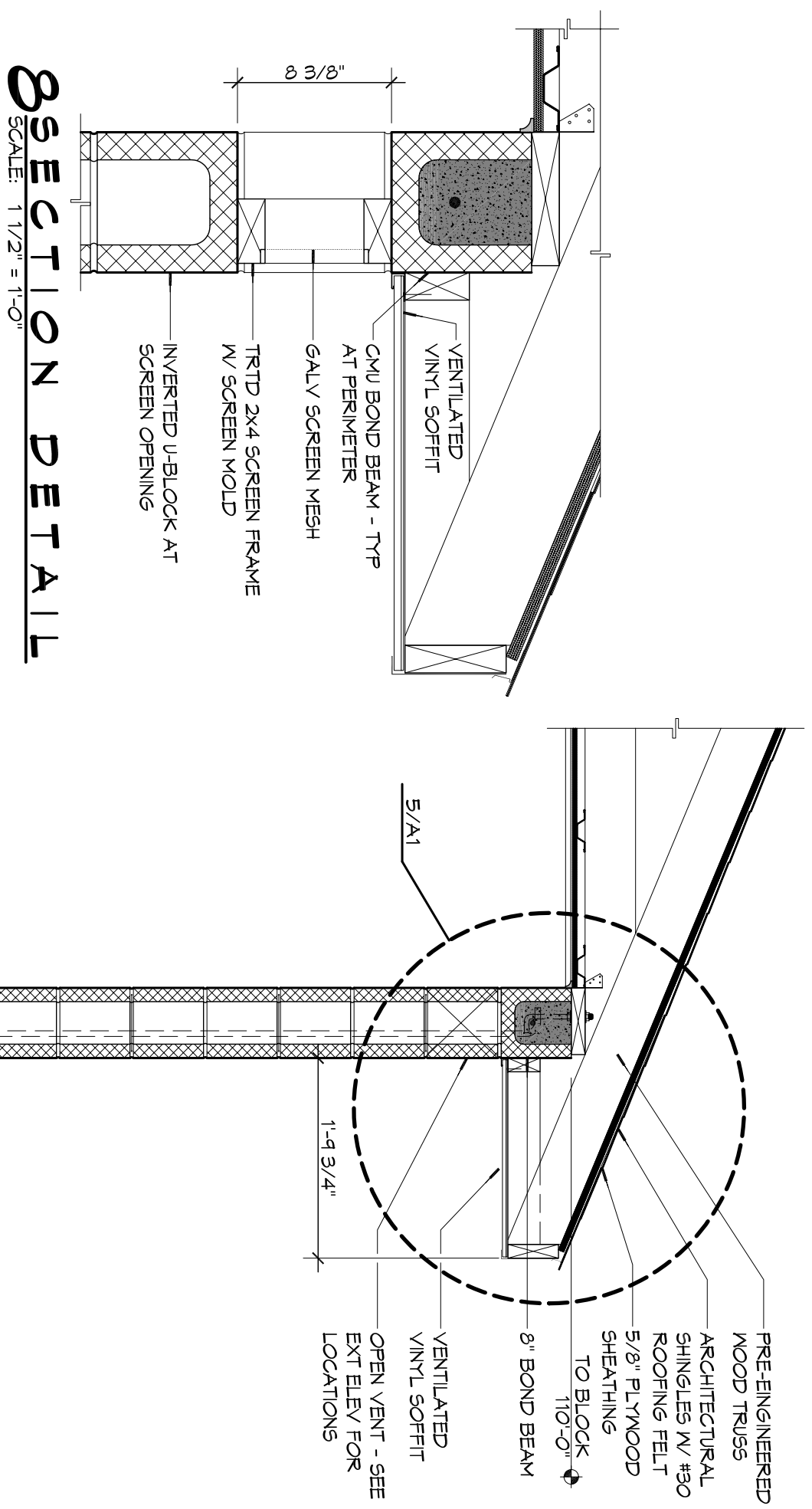
PARTITION TYPE
SCALE: 1/2" = 1'-0"



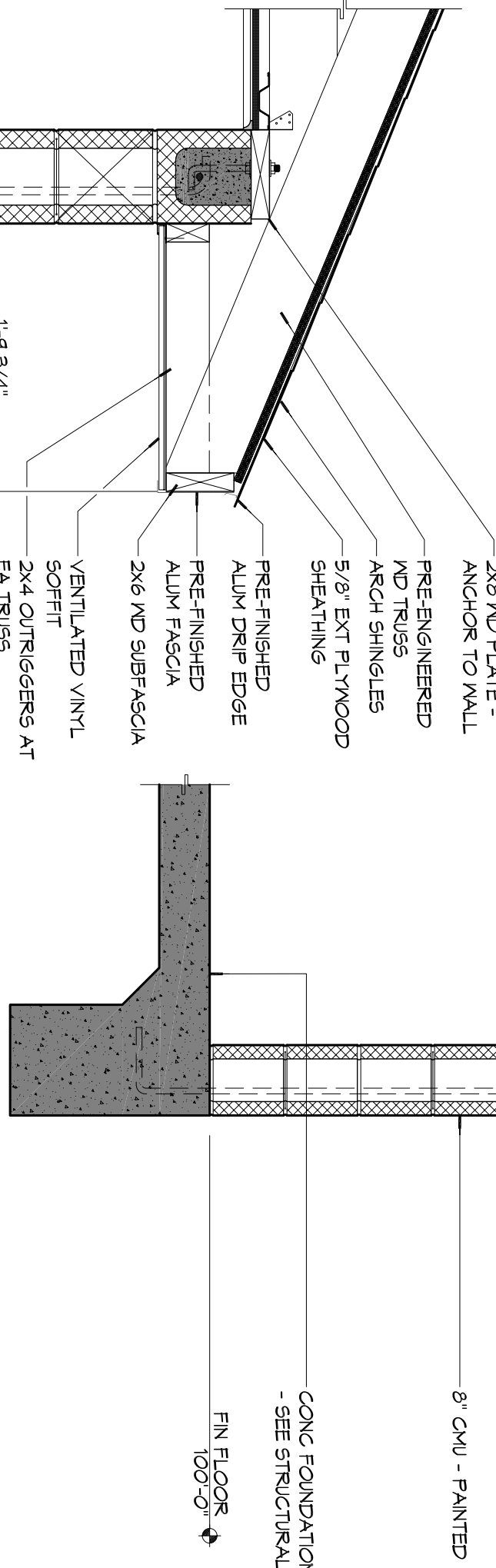
EXTERIOR ELEVATION
SCALE: 1/4" = 1'-0"



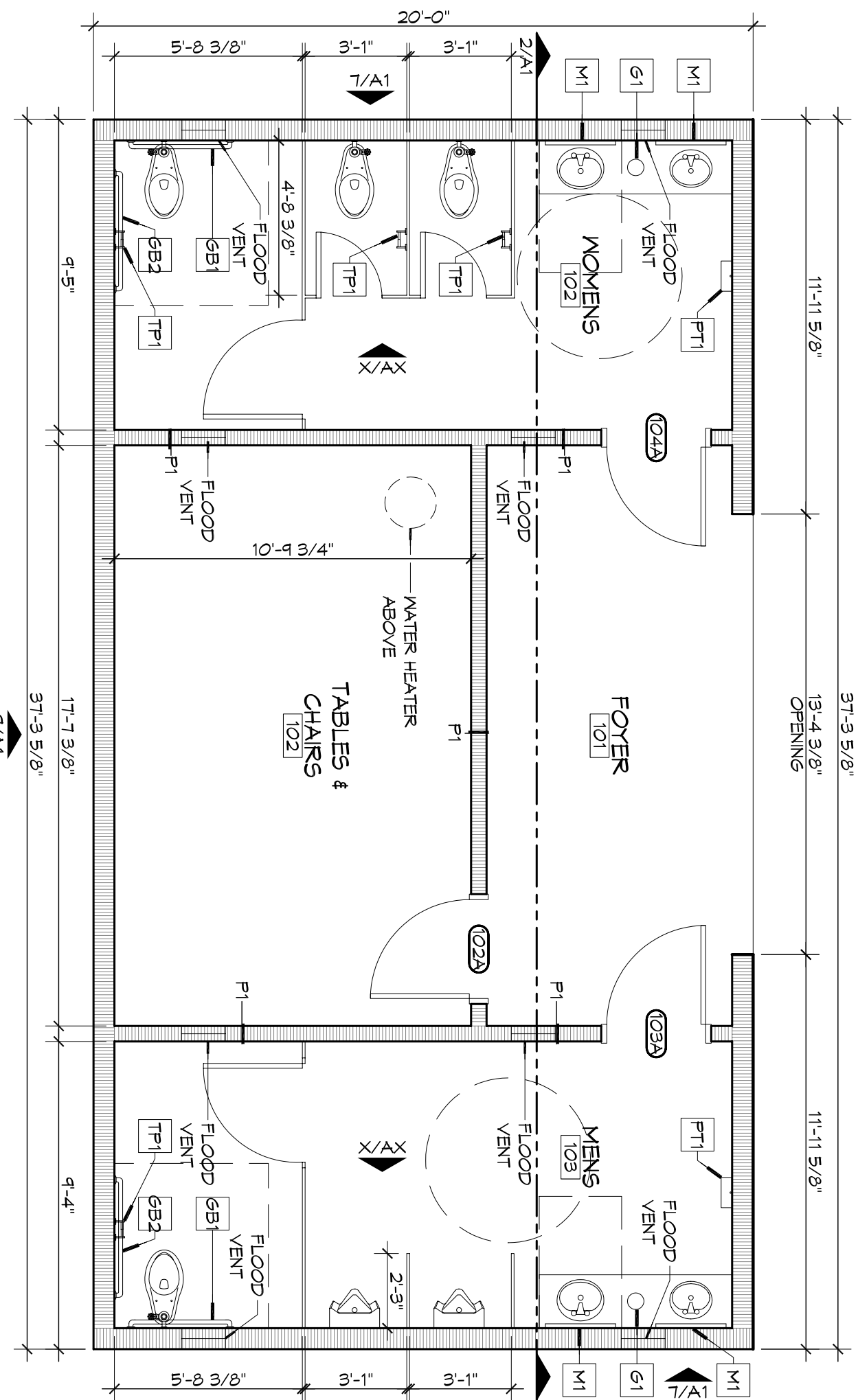
BUILDING SECTION
SCALE: 1/4" = 1'-0"



SECTION DETAIL
SCALE: 1 1/2" = 1'-0"



4 WALL SECTION
SCALE: 3/4" = 1'-0"



ARCHITECTURAL FLOOR PLAN
SCALE: 1/4" = 1'-0"

GENERAL NOTES

1. INSULATION AND INSULATION ASSEMBLIES SHALL MEET THE REQUIREMENTS OF IRC 2003 SECTION 1201. SHALL HAVE A FLAME SPREAD OF 0-25 AND SMOKE DEVELOPED INDEX OF 0-450 EXCEPT THAT IN COMBUSTIBLE (WOOD FRAME) CONSTRUCTION
2. PROVIDE 6" WIDE (MIN.) LANDINGS LEVEL WITH FINISHED FLOOR OUTSIDE EXTERIOR DOORS. SEE SITE PAVING PLAN. THRESHOLDS SHALL BE NOT MORE THAN 1/2" IN HEIGHT AND SHALL BE BEVELED IF MORE THAN 1/4". PROVIDE 6" WIDE (MIN.) LANDINGS LEVEL WITH FINISHED FLOOR OUTSIDE EXTERIOR DOORS. SEE SITE PAVING PLAN. THRESHOLDS SHALL BE NOT MORE THAN 1/2" IN HEIGHT AND SHALL BE BEVELED IF MORE THAN 1/4". CONTRACTOR TO VERIFY ALL SITE CONDITIONS, BUILDING LOCATIONS, AND DIMENSIONS PRIOR TO CONSTRUCTION.
3. MATERIALS SHALL BE NEW AND U.L. LISTED.
4. NO WORK SHALL BE CONCEALED UNTIL APPROVED BY LOCAL INSPECTORS.
5. CONSTRUCTION SHALL COMPLY WITH ALL FEDERAL, STATE, AND LOCAL CODES.
6. CONTRACTOR TO GUARANTEE WORK FOR ONE YEAR.
7. EXTERIOR WALLS SHALL BE FINISHED WITH PAINT, SEWER AND POWER FROM EXISTING COURTES.
8. EXTERIOR WALLS SHALL BE DOWN CORNING TO SILICONE. INSTALL IN ACCORDANCE WITH MANUFACTURER RECOMMENDATION WITH APPROVED EPOXY SELECT LOCAL IN EXTERIOR WALLS TO BE EQUAL TO PAINT FINISH WITH SILICONE.
9. PAINT GRADE TO SHALL BE SERRAN WALLING OR EQUIVALENT. ALL FINISHES SHALL BE APPROVED BY OWNER AND APPLIED PER OWNER'S DIRECTIONS TO BE CHOSEN BY OWNER AND APPLIED PER OWNER'S DIRECTIONS.
10. PROVIDE CLEANUP ON A REGULAR BASIS. NO TRASH STORED IN BUILDING.
11. ALL INSULATION SHALL HAVE A CLASS "X" (0-25) FLAME SPREAD IN CONFORMANCE WITH APPLICABLE CODE.
12. ALL INSULATION SHALL HAVE A CLASS "X" (0-25) FLAME SPREAD IN CONFORMANCE WITH APPLICABLE CODE.
13. FLOOR SURFACE SHALL BE NON-SLIP.
14. LOCKS ON DOORS IN MEANS OF EGRESS SHALL NOT REQUIRE THE USE OF A KEY, SPECIAL KNOWLEDGE, OR SPECIAL DEVICE TO OPEN IN THE DIRECTION OF EGRESS. ALL DOORS SHALL HAVE LEVER TYPE HANDLES, INTERIOR WALLS AND CEILING SHALL HAVE A FLAME SPREAD OF 0-200 AND A SMOKE DEVELOPMENT RATING OF 0-450.
15. PROVIDE PORTABLE FIRE EXTINGUISHERS IN ACCORDANCE WITH NFPA 101. SEE APPENDIX "E" OF NFPA 101 FOR DISTRIBUTION OF EXTINGUISHERS.
16. PROVIDE PORTABLE FIRE EXTINGUISHERS IN ACCORDANCE WITH NFPA 101. SEE APPENDIX "E" OF NFPA 101 FOR DISTRIBUTION OF EXTINGUISHERS.
17. ALL FIRE WALLS SHALL EXTEND TIGHT TO ROOF SHEATHING, AND BE SEALED WITH AN APPROVED FIRE CALK.
18. ALL ELECTRICAL, MECHANICAL, AND PLUMBING MATERIALS PENETRATING FIRE WALLS SHALL BE FIRE CALKED (PENETRATING THROUGH RATED WALLS SHALL BE FIRE CALKED). PROVIDE THE PASSAGE OF FLAMES AND NOT GASES WHEN TESTED IN ACCORDANCE WITH ASTM E814.

ACCESSORY SCHEDULE

MK	DESCRIPTION	MFR	MODEL #
6B1	36" 56 GRAB BAR	BRADLEY	612 OR APPROVED EQUAL
6B2	42" 56 GRAB BAR	BRADLEY	612 OR APPROVED EQUAL
M1	CHANNEL FRAME MIRROR	BRADLEY	761 OR APPROVED EQUAL
FT1	PAPER TOWEL DISPENSER	BOBRICK	B-262 OR APPROVED EQUAL
TP1	TOILET PAPER DISPENSER	BOBRICK	B-268 OR APPROVED EQUAL
G1	PLASTIC TRASH GRONWET	DOUG	TM-1 PLASTIC OR APPROVED EQUAL

DAMMON ENGINEERING, INC.
Architects & Engineers

Chief Architect: Kevin J. Kinchen, NCARB
554 Old Spanish Trail
Slidell, LA 70458

www.dammoneengineering.com
dammoneeng@bellsouth.net
PH: 985.649.5832
F: 985.641.5950

SLIDELL BALL PARK
SLIDELL, LOUISIANA

JOB No: 2110 DATE: 3/5/2014
DRAWN BY: KCK CHECKED BY: CKD

Architectural Floor Plan

PRELIMINARY NOT FOR CONSTRUCTION

A1

Sheet No. 02 of XX