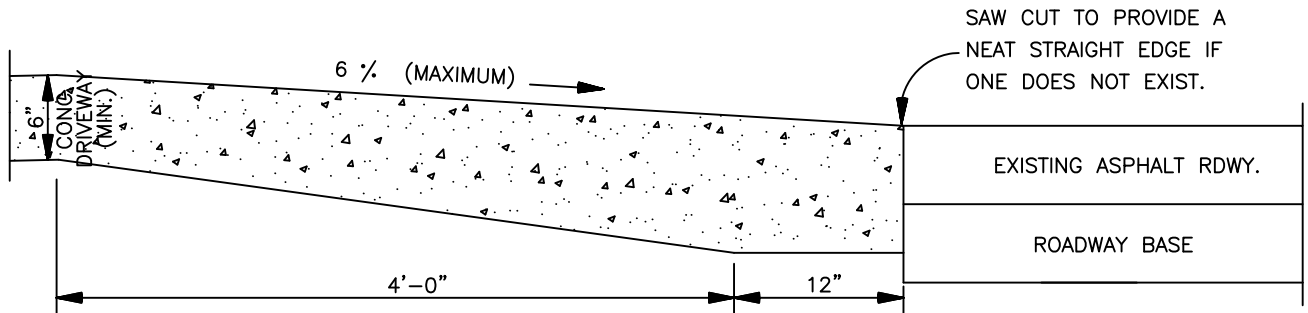


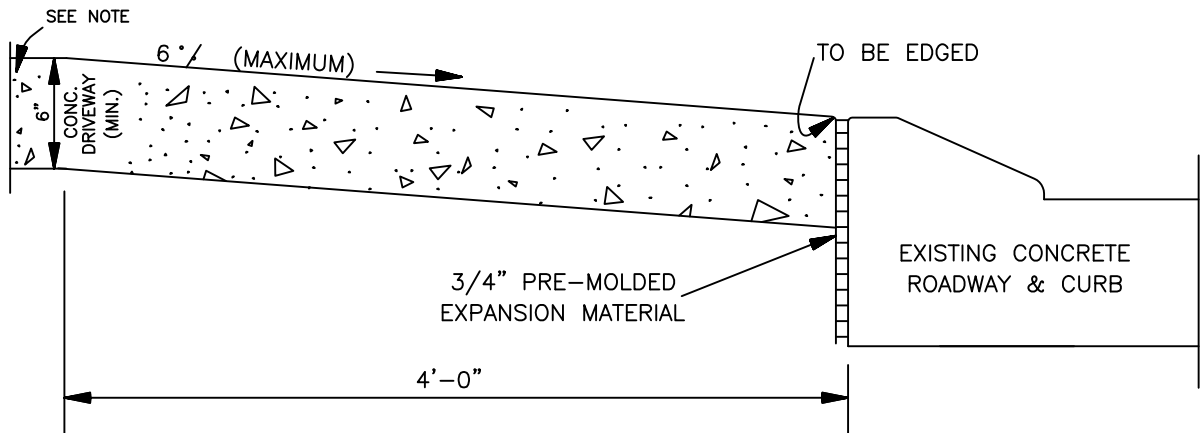
NEW DRIVEWAY CONNECTION TO EXISTING ASPHALT ROADWAY WITH CURB AND GUTTER



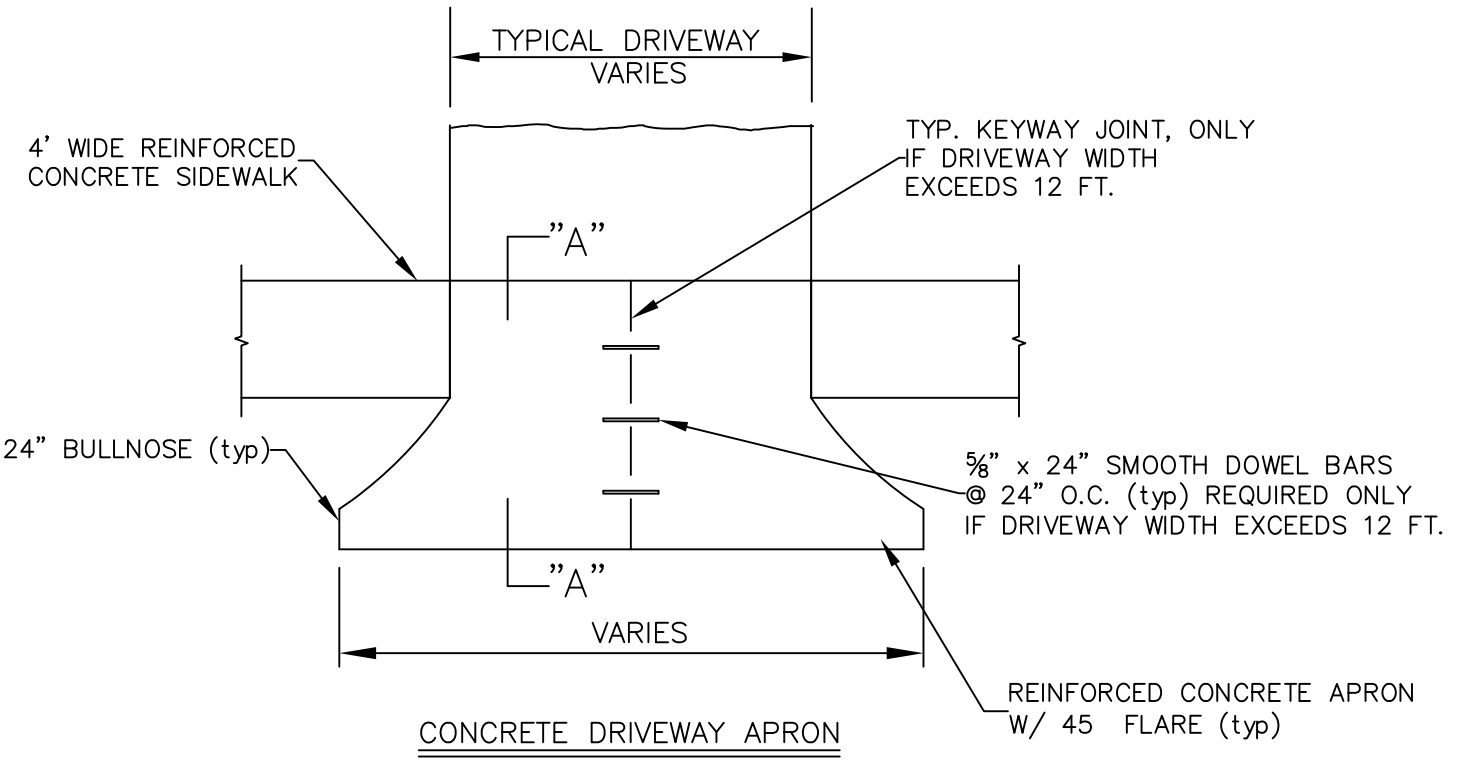
NEW DRIVEWAY CONNECTION TO EXISTING ASPHALT ROADWAY WITHOUT CURB

	DRIVEWAY CONNECTIONS-ASPHALT	
	CITY OF SLIDELL ENGINEERING DEPT.	
	Annual Maintenance Contract FY' 2016	
DRAWN BY: JMC	FILE No: 950-41E	SHT 1
Approved By: DSO	DATE: 4/28/2015	

SECTION "A"



NEW DRIVEWAY CONNECTION TO EXISTING CONCRETE ROADWAY
WITH ROLLOVER CURB (CURB TO REMAIN)
 (NOT APPLICABLE TO MAJOR STREETS
 WHERE EXISTING CURB HEIGHT EXCEEDS 3")

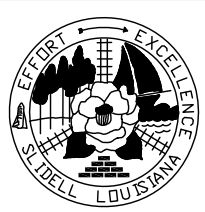


CONCRETE DRIVEWAY APRON

NTS

NOTE:

ALL DRIVEWAYS IN CITY R/W SHALL BE MINIMUM 6" THICK CONCRETE OVER A 6" COMPACTED SAND BASE. ALL SIDEWALKS SHALL BE MINIMUM 4" THICK CONCRETE OVER A 4" COMPACTED BASE. CONCRETE SHALL BE 4000 PSI, REINFORCED WITH POLYPROPYLENE FIBERS (1-1/2 ONE-POUND BAGS PER C.Y. OF CONCRETE)



DRIVEWAY CONNECTIONS-CONCRETE

CITY OF SLIDELL ENGINEERING DEPT.

Annual Maintenance Contract FY' 2016

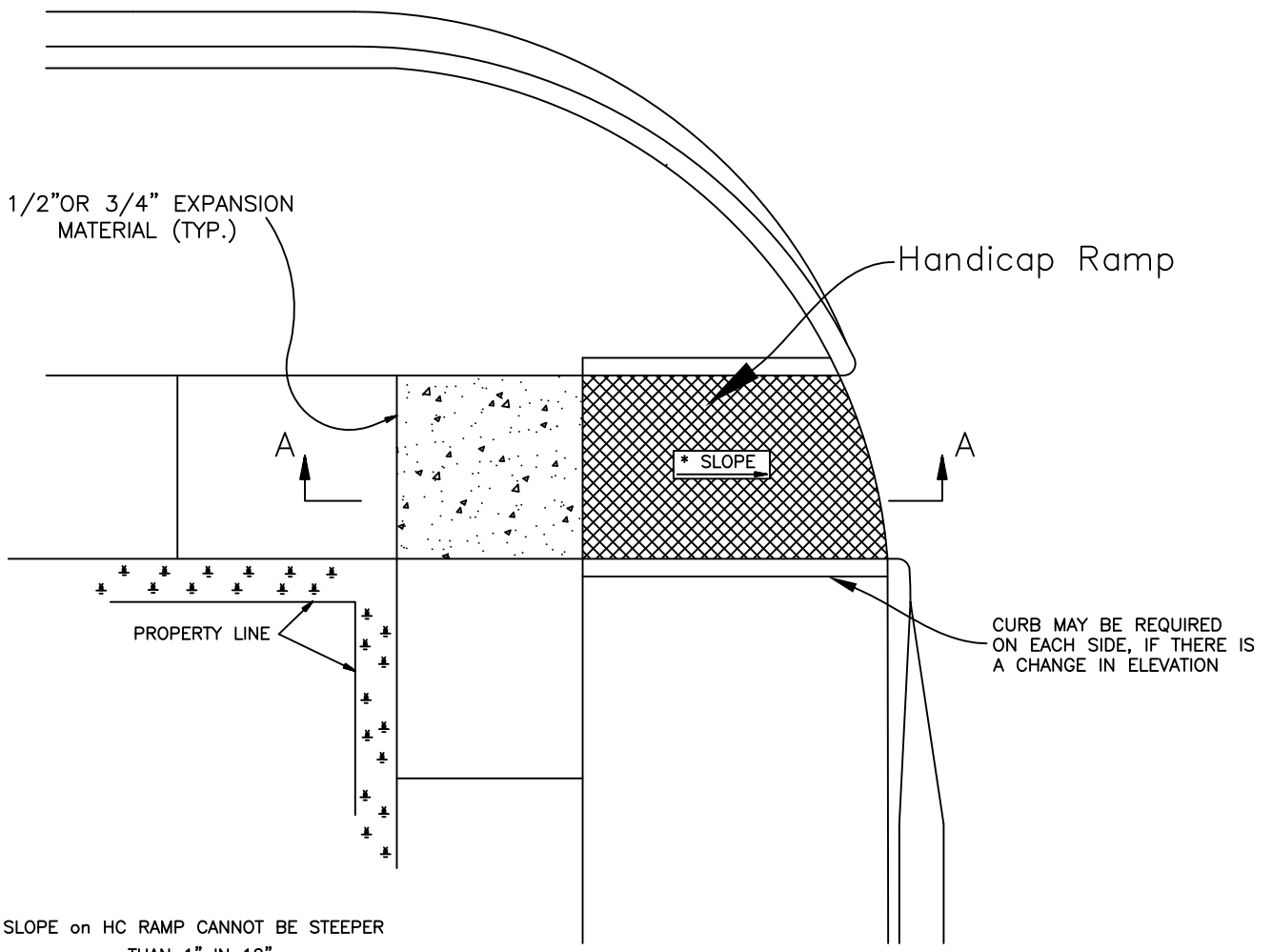
DRAWN BY: JMC

FILE No: 950-41E

SHT 2

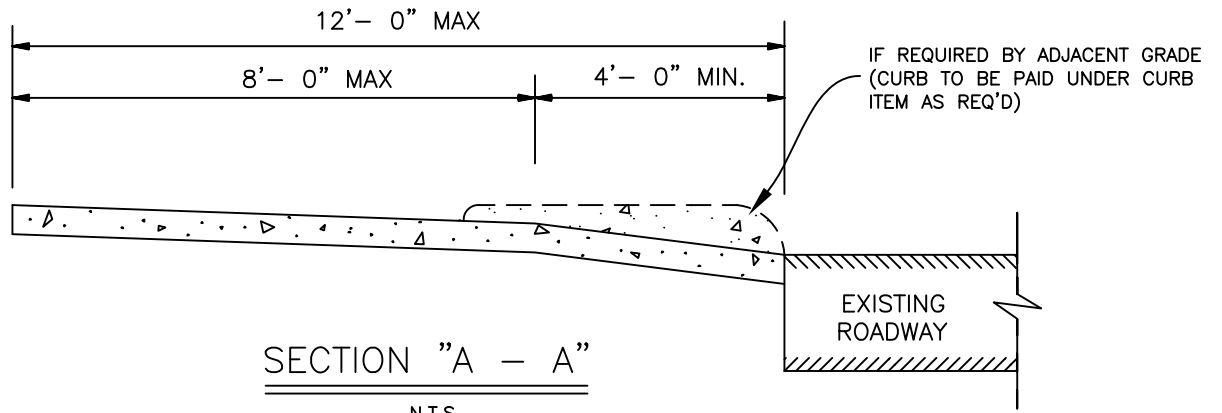
Approved By: DSO

DATE: 4/28/2015



* SLOPE on HC RAMP CANNOT BE STEEPER THAN 1" IN 12"

HANDICAPPED CURB RAMP



SECTION "A - A"

N.T.S.



Handicapped Curb Ramp

CITY OF SLIDELL ENGINEERING DEPT.

Annual Maintenance Contract FY' 2016

DRAWN BY: JMC

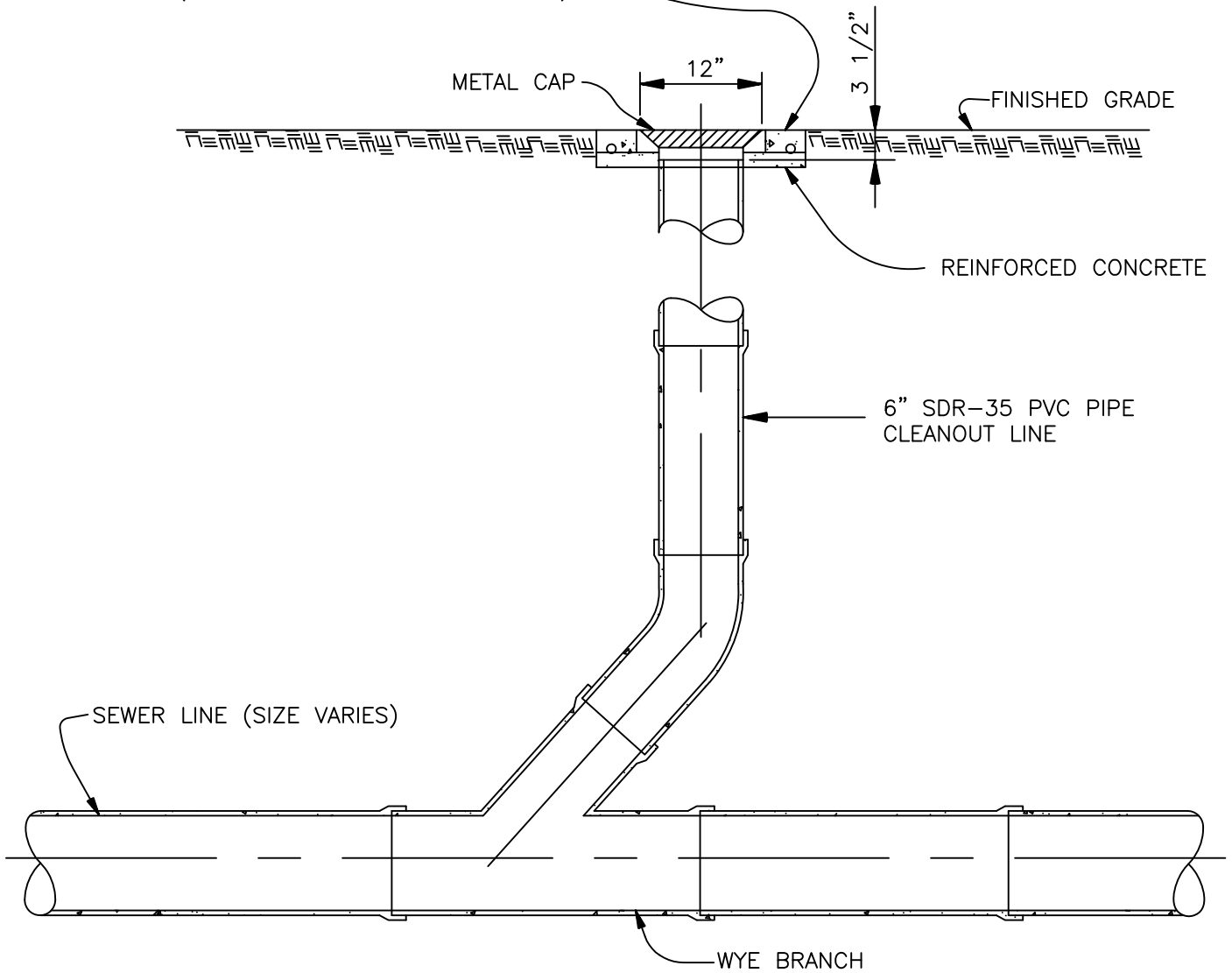
FILE No: 950-41E

Approved By: DSO

DATE: 4/28/2015

SHT 3

24" X 24" X 4" THICK CONCRETE PAD. PLACE REBAR IN CONCRETE (FOR LOCATION PURPOSES ONLY.)



SEWER CLEANOUT

N.T.S.



CLEANOUT DETAILS

CITY OF SLIDELL ENGINEERING DEPT.

Annual Maintenance Contract FY' 2016

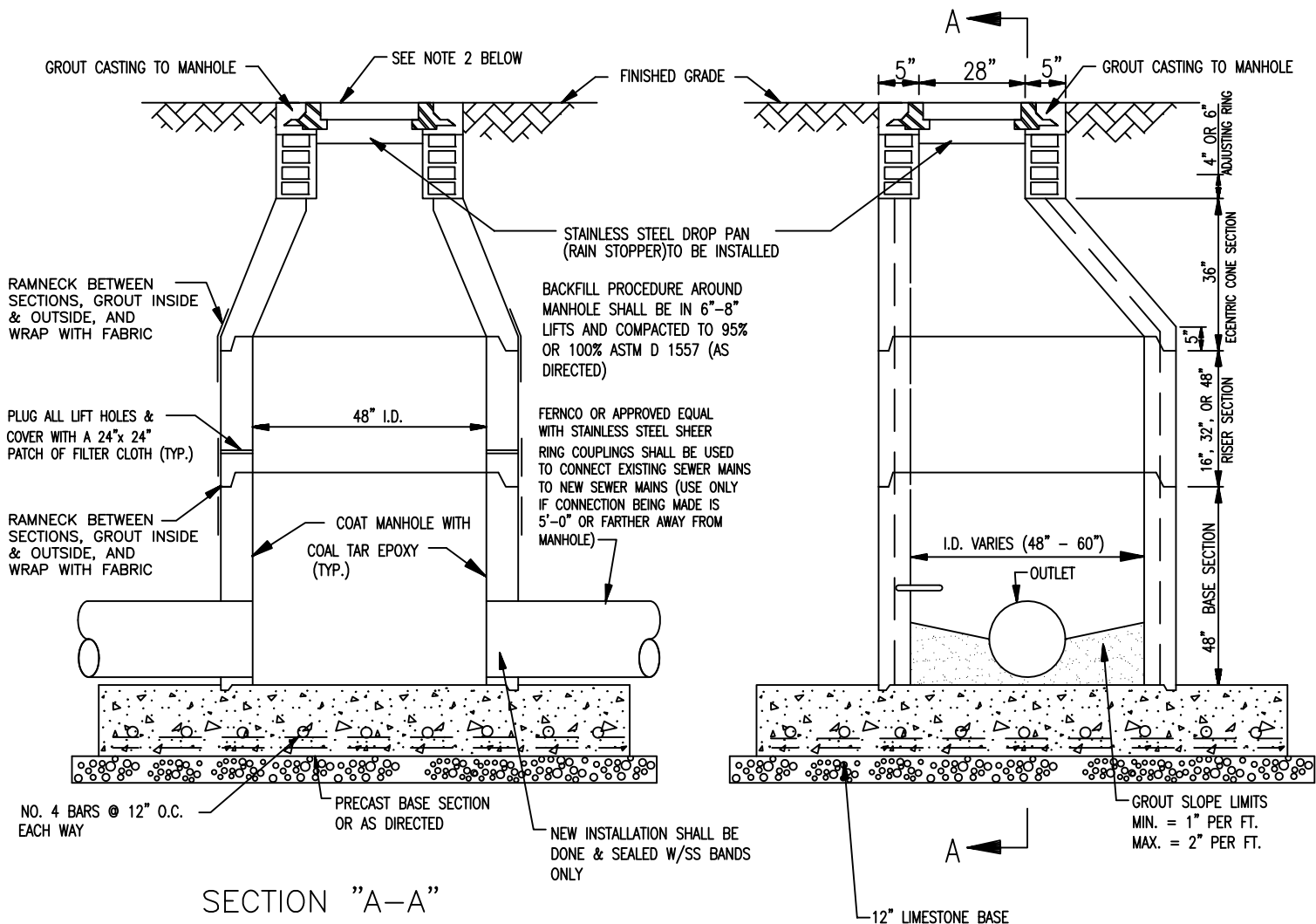
DRAWN BY: JMC

FILE No: 950-41E

Approved By: DSO

DATE: 4/28/2015

SHT 4

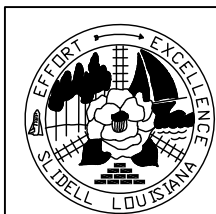


PRECAST CONCRETE SEWER MANHOLE

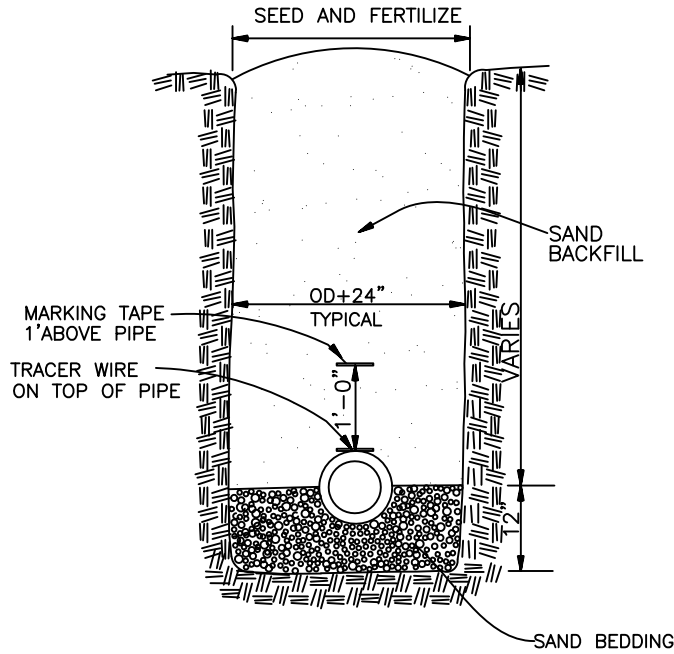
NTS

NOTES:

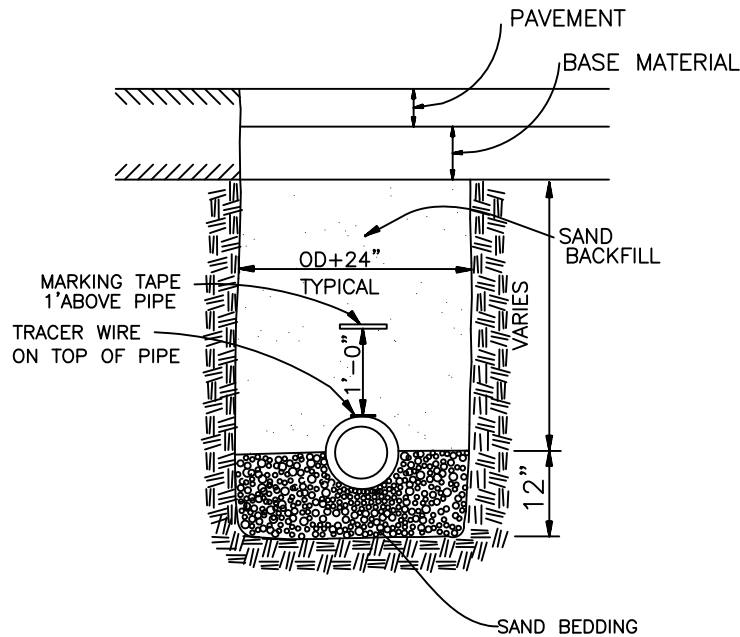
1. TO CONNECT TO EXISTING M.H. OLD PIPE IS TO BE BROKEN OUT & NEW PIPE INSERTED COMPLETELY INTO NEW MANHOLE.
2. COVER SHOULD BE VULCAN FOUNDRY OR APPROVED EQUAL RIM AND COVER, WITH LETTERING "SEWER" TO BE CAST ON LID.
3. ALL SEWER MANHOLES SHALL INCLUDE A SS RAINSTOPPER LINER.



SEWER MANHOLE		
CITY OF SLIDELL ENGINEERING DEPT.		
Annual Maintenance Contract FY' 2016		
DRAWN BY: JMC	FILE No: 950-41E	SHT 5
Approved By: DSO	DATE: 4/28/2015	

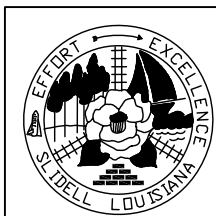


WATER OR SANITARY SEWER PIPE FOUNDATION
IN GRASS
N.T.S



WATER OR SANITARY SEWER PIPE FOUNDATION
UNDER PAVEMENT
N.T.S

1. SHORING MAY BE REQUIRED BY SOIL CONDITIONS
2. WATERLINES SHALL BE C-900
3. SEWER FORCE MAIN SHALL BE SDR 26
4. GRAVITY SEWER LINE SHALL BE SDR 35
5. TRACER WIRE REQUIRED ON WATER & FORCE MAINS ONLY



SANITARY SEWER PIPE FOUNDATION

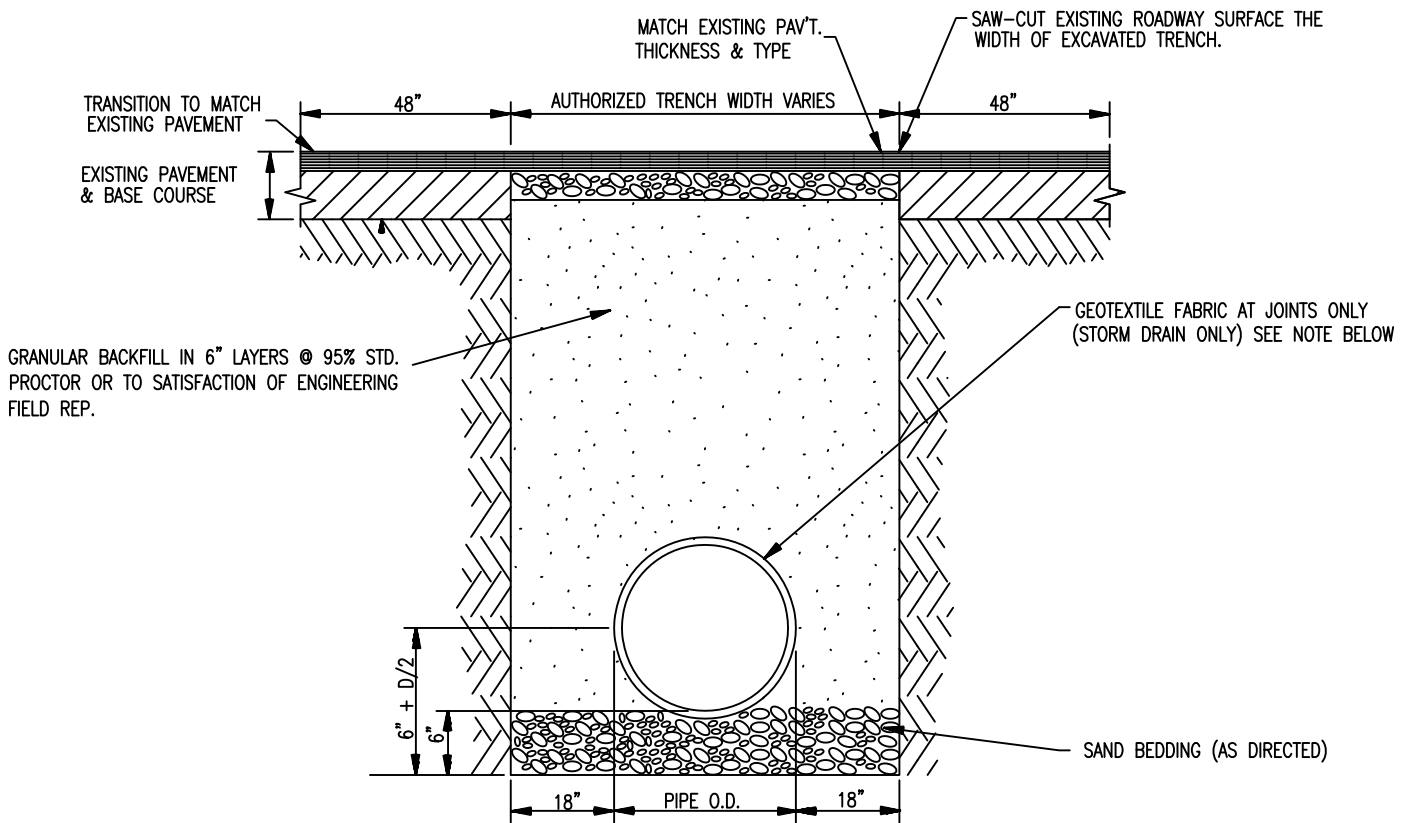
CITY OF SLIDELL ENGINEERING DEPT.

Annual Maintenance Contract FY' 2016

DRAWN BY: JMC
Approved By: DSO

FILE No: 950-41E
DATE: 4/28/2015

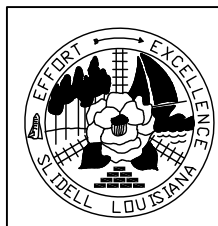
SHT 6



TYPICAL DETAIL FOR
CULVERTS IN ROADWAYS
N.T.S.

NOTES:

1. ALL GEOTEXTILE FABRIC TO BE 3'-0" WIDE AND TO OVERLAP NO LESS THAN 1/2 OF PIPE DIAMETER. COST OF FABRIC IS TO BE ABSORBED IN THE UNIT PRICE OF DRAIN PIPE AND SHALL NOT BE MEASURED FOR SEPERATE PAYMENT.
2. ADDITIONAL BEDDING MATERIAL MAY BE REQUIRED AS DIRECTED BY THE ENGINEER.
3. TIMBER PLANKING UNDER CULVERTS MAY BE REQUIRED BY ENGINEER.



BEDDING DETAILS

CITY OF SLIDELL ENGINEERING DEPT.

Annual Maintenance Contract FY' 2016

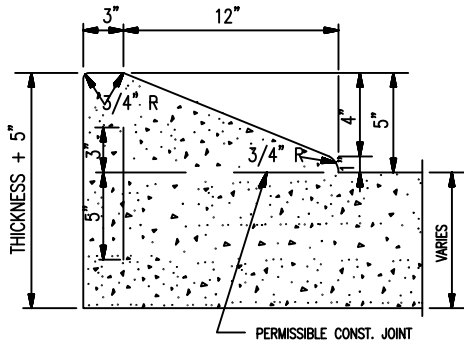
DRAWN BY: JMC

FILE No: 950-41E

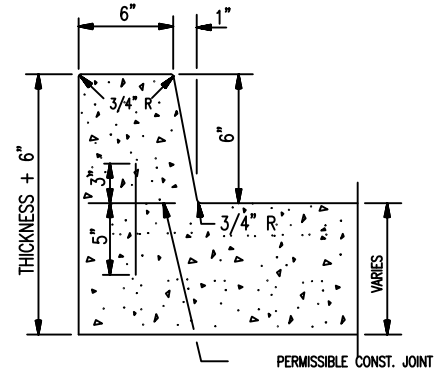
Approved By: DSO

DATE: 4/28/2015

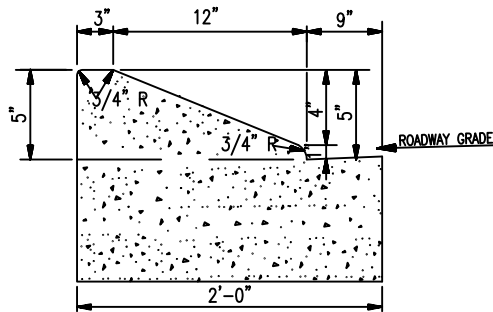
SHT 7



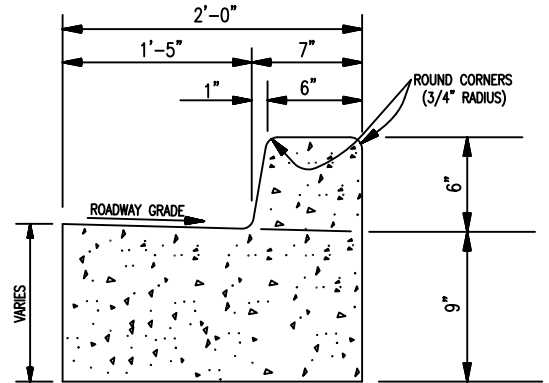
5" ROLLOVER TYPE
CONCRETE CURB
(CONCRETE PAVEMENT ROADWAY)



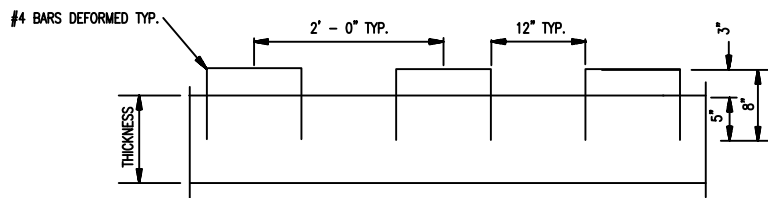
6" BARRIER TYPE
CONCRETE CURB
(CONCRETE PAVEMENT ROADWAY)



5" ROLLOVER TYPE
CONCRETE CURB & GUTTER
(ASPHALT PAVEMENT ROADWAY)



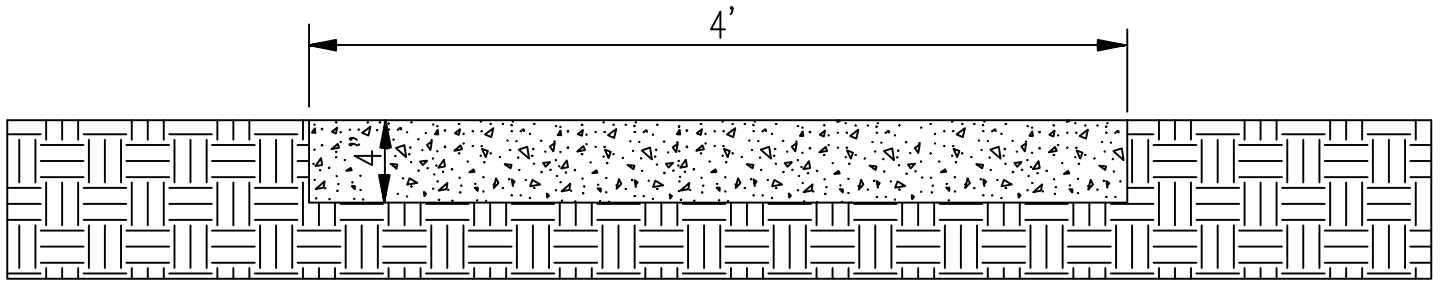
6" BARRIER TYPE
CONCRETE CURB & GUTTER
(ASPHALT PAVEMENT ROADWAY)



CURB DOWELS

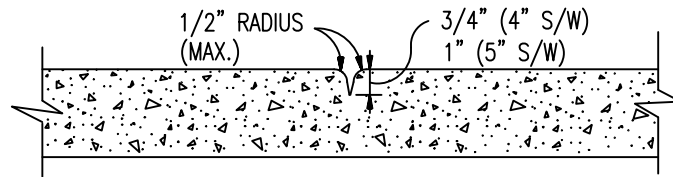


CURB DETAILS		
CITY OF SLIDELL ENGINEERING DEPT.		
Annual Maintenance Contract FY' 2016		
DRAWN BY: JMC	FILE No: 950-41E	SHT 8
Approved By: DSO	DATE: 4/28/2015	

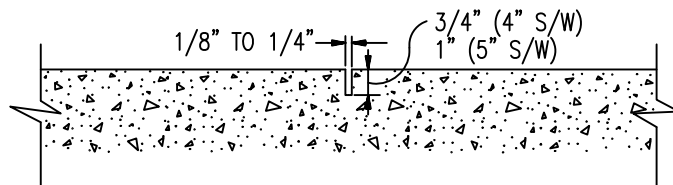


TYPICAL SIDEWALK

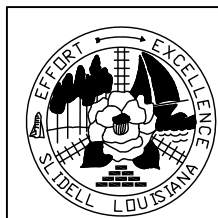
4" THICK SAND BASE



HAND TOOLED CONTRACTION JOINT
(MINIMUM SPACING = 4'-0")



SAWED CONTRACTION JOINT
(MINIMUM SPACING = 4'-0")



SIDEWALK DETAILS

CITY OF SLIDELL ENGINEERING DEPT.

Annual Maintenance Contract FY' 2016

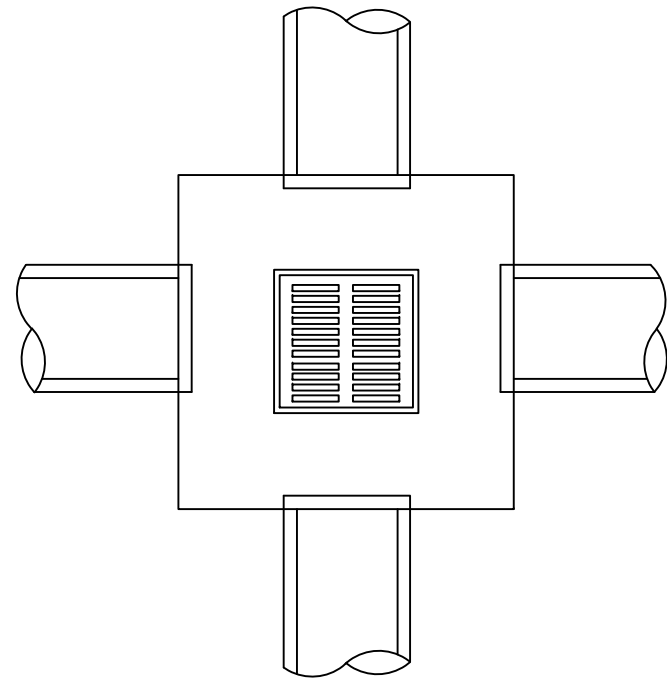
DRAWN BY: JMC

FILE No: 950-41E

Approved By: DSO

DATE: 4/28/2015

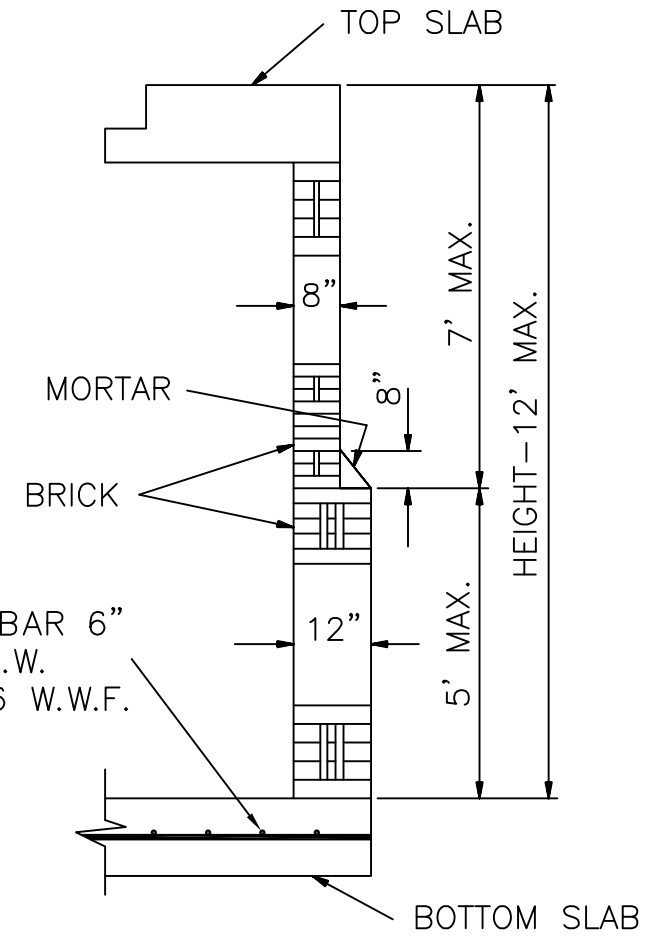
SHT 9



TYPICAL DROP INLET

NTS

NOTE: NUMBER OF CULVERTS INTO/OUT OF BOX WILL VARY.

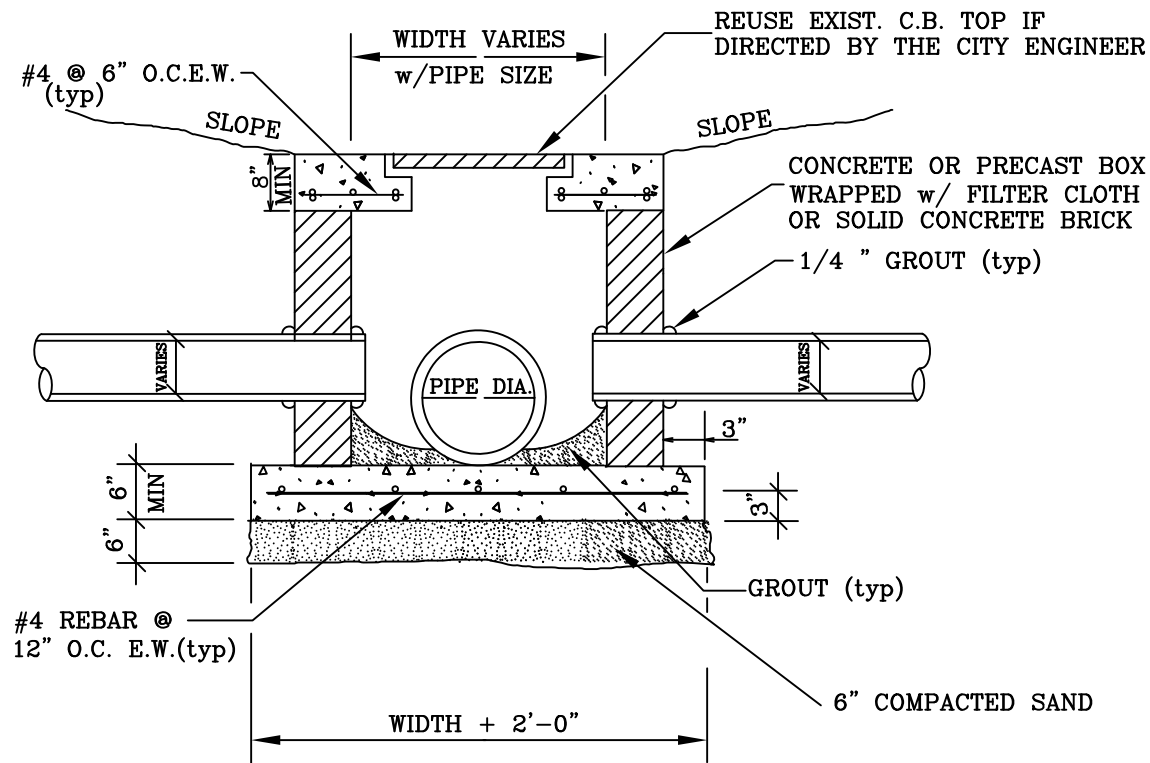


TYPICAL WALL SECTION FOR BRICK CONST.

N.T.S.

NOTES:

1. CATCH BASIN SHALL BE PRECAST, CAST-IN-PLACE, OR SOLID BRICK CONSTRUCTION, AS SHOWN IN DETAIL.
2. CONCRETE STRENGTH TO BE 3,000 PSI (MIN)
3. WHEN BOX IS 7'-0" OR LESS IN HEIGHT, WALLS ARE TO BE 8" THICK. WHEN BOX'S HEIGHT IS GREATER THAN 7'-0" BUT LESS THAN 12'-0" SEE WALL SECTION.
4. ALL MASONRY TO BE LAID WITH RUNNING BOND AND HEADER COURSE (EVERY FOURTH LAYER).
5. ALL WALLS TO BE PLASTERED 1/2" THICK INSIDE AND OUTSIDE.
6. 12" THICK CRUSHED STONE BEDDING FOUNDATION SHALL BE REQUIRED UNDER ALL MANHOLES AND CATCH BASINS. (NOT SHOWN ON PLANS)
7. CAST-IN-PLACE CATCH BASINS SHALL COMPLY WITH DOTD STANDARD PLANS AND SPECIFICATIONS.

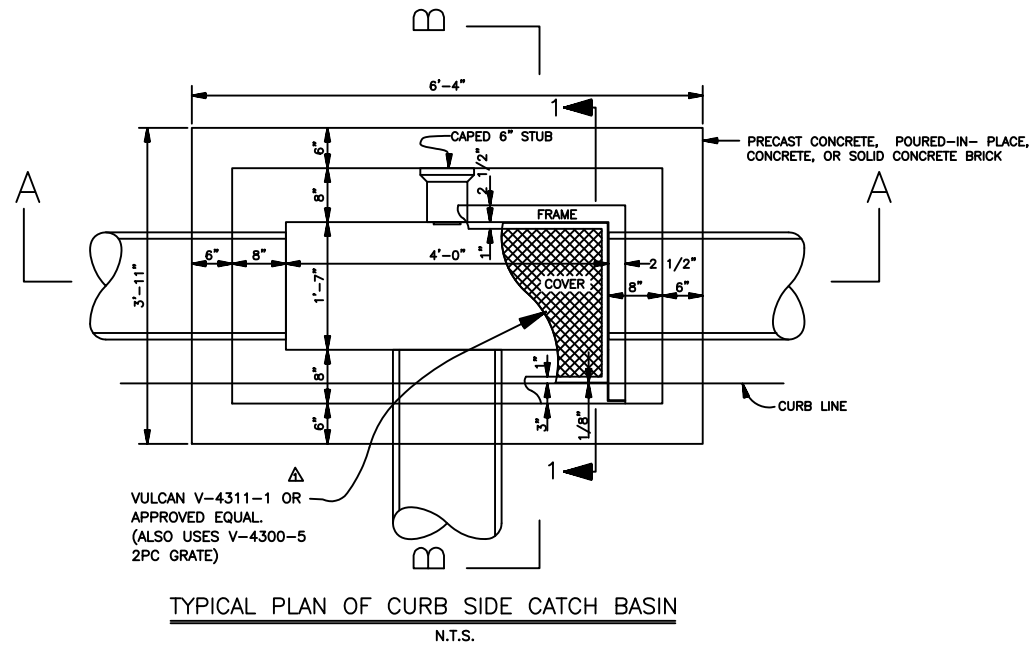


SECTION DROP INLET

NTS

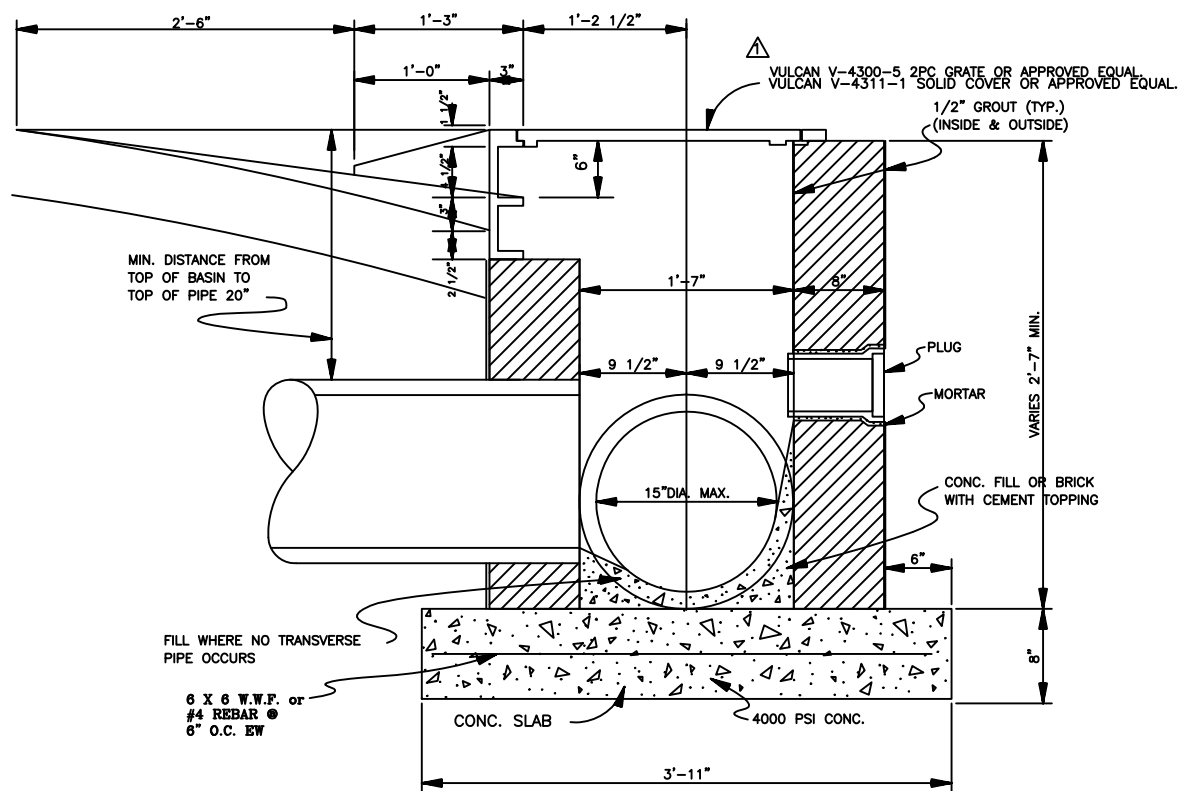


DROP INLET		
CITY OF SLIDELL ENGINEERING DEPT.		
Annual Maintenance Contract FY' 2016		
DRAWN BY: JMC	FILE No: 950-41E	SHT 10
Approved By: DSO	DATE: 4/28/2015	

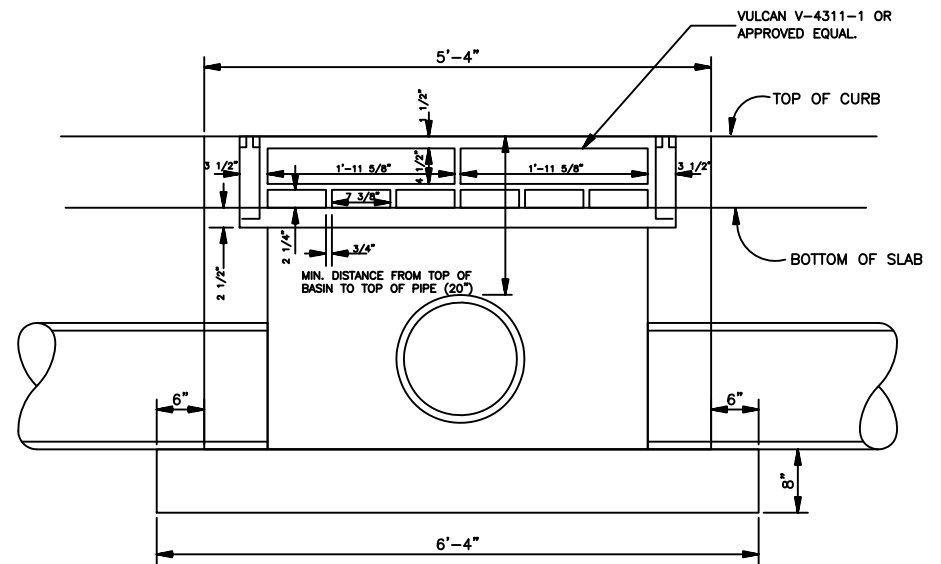


TYPICAL PLAN OF CURB SIDE CATCH BASIN
N.T.S.

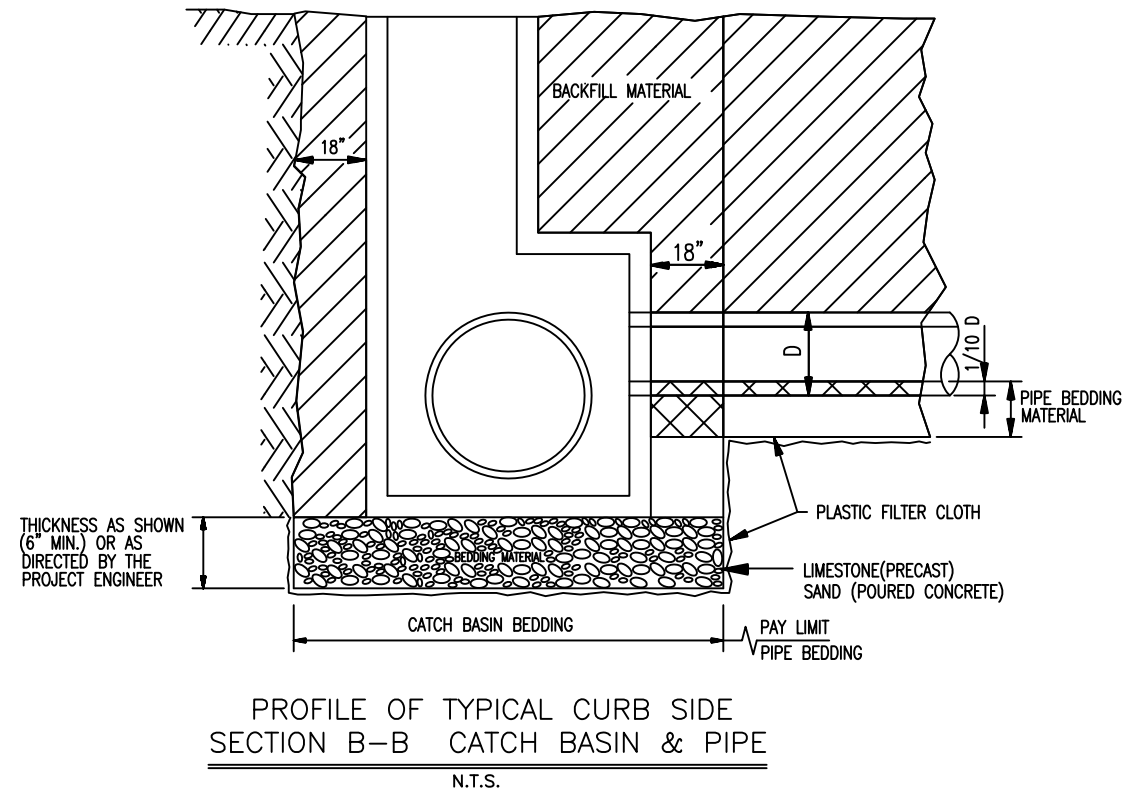
NOTE: 1. NUMBER OF CULVERTS INTO/OUT BOX WILL VARY.



CURB SIDE DROP INLET SECTION 1
N.T.S.

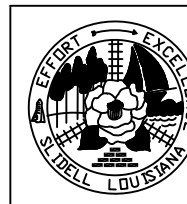


FRONT ELEVATION CURB SIDE CATCH BASIN SECTION A'-A'
N.T.S.

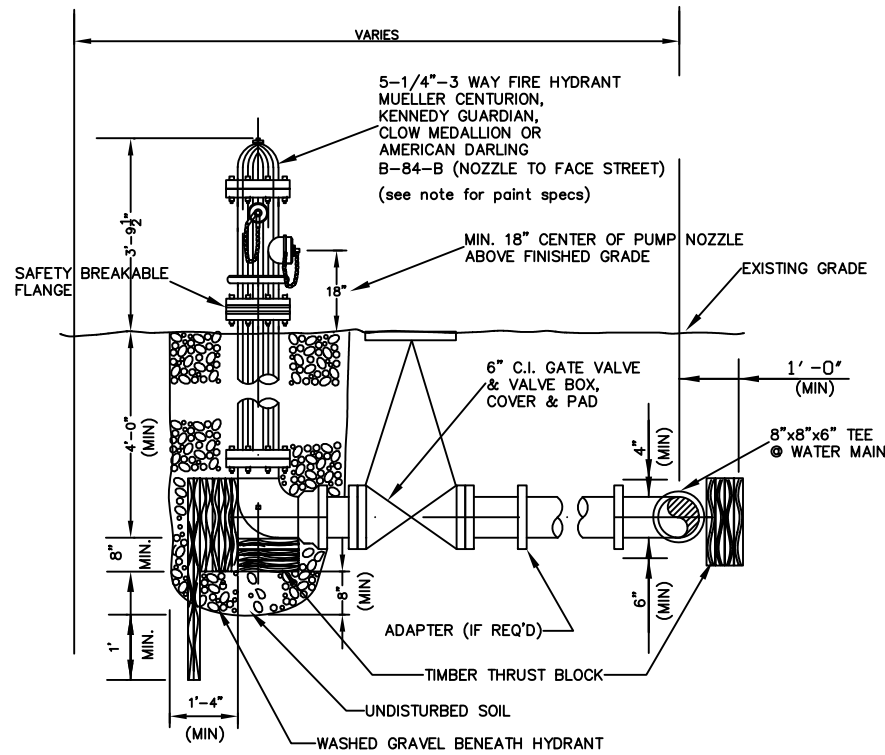


PROFILE OF TYPICAL CURB SIDE SECTION B-B CATCH BASIN & PIPE
N.T.S.

NOTE:
SEE SHEET 10 FOR GENERAL NOTES



CURB SIDE INLET DETAILS		
CITY OF SLIDELL ENGINEERING DEPT.		
Annual Maintenance Contract FY' 2016		
DRAWN BY: JMC	FILE No: 950-41E	SHT 11
Approved By: DSO	DATE: 4/28/2015	



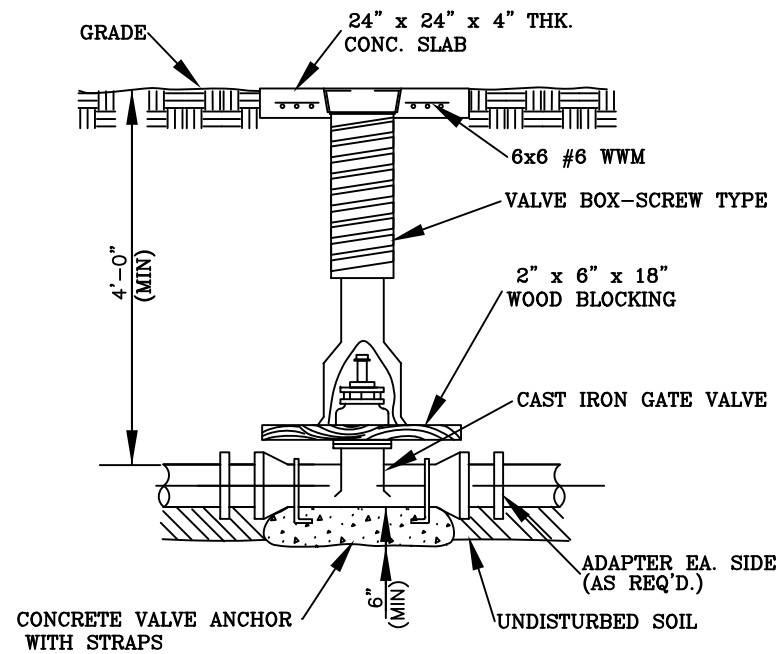
FIRE HYDRANT DETAIL
NTS

NOTES:

HYDRANT PAINT SHALL BE FACTORY APPLIED.
(FIELD APPLIED PAINT SHALL NOT BE APPROVED)

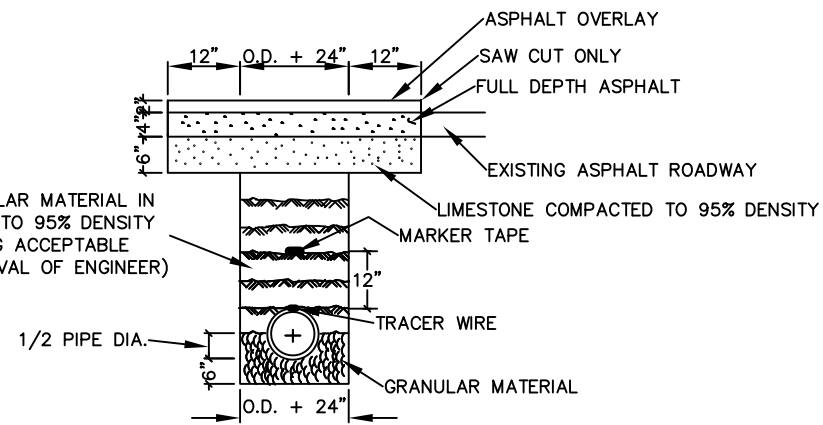
PAINT COLOR SHALL BE:

1. KENNEDY HYDRANTS: KENNEDY SAFETY YELLOW NUMBER 05
2. MUELLER HYDRANTS: SAFETY YELLOW, F63RXY9659, MA0150, PAINT CODE (M7)
3. CLOW MEDALLION: SAFETY YELLOW
4. AMERICAN DARLING HYDRANTS: DUPONT SAFETY YELLOW 1663IE

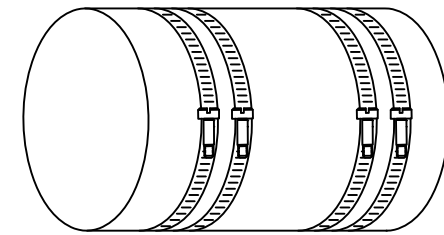


TYPICAL VALVE BOX DETAIL
NTS

BACKFILL WITH GRANULAR MATERIAL IN 6" LIFTS, COMPACTED TO 95% DENSITY (BACKFILL w/ EXISTING ACCEPTABLE MATERIAL w/ APPROVAL OF ENGINEER)

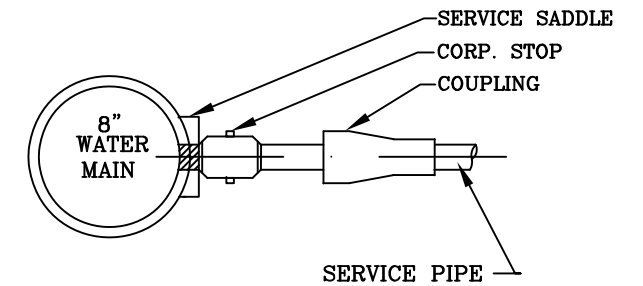


TYPICAL ASPHALT ROADWAY SAW CUT SECTION FOR WATER OR SEWER LINES
NTS

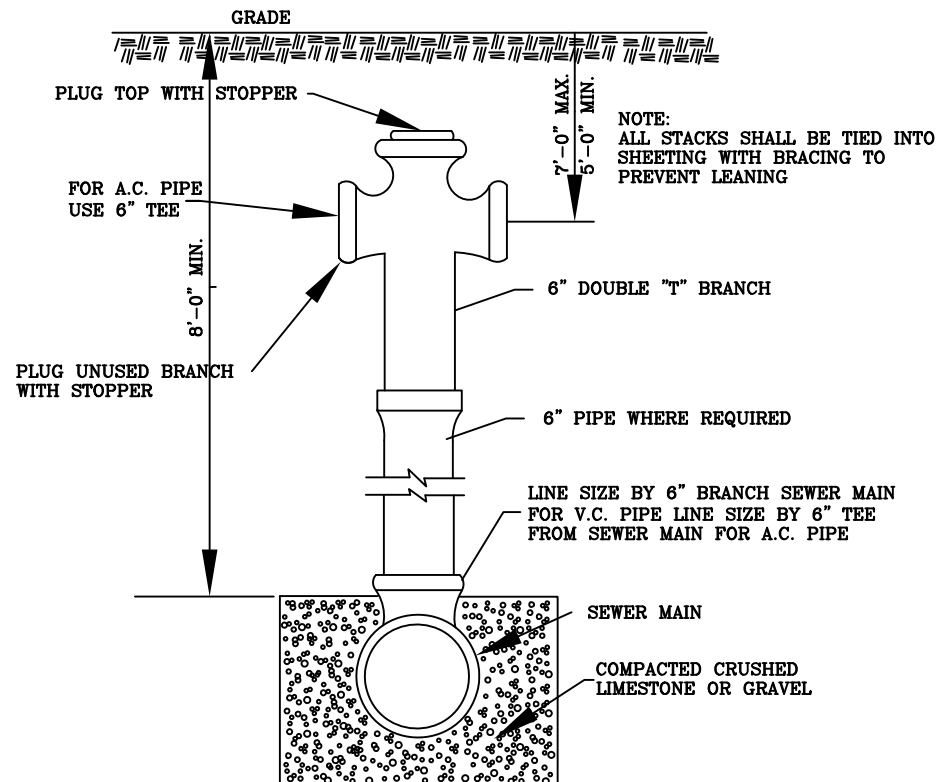


Sewer Repair Coupling
NTS

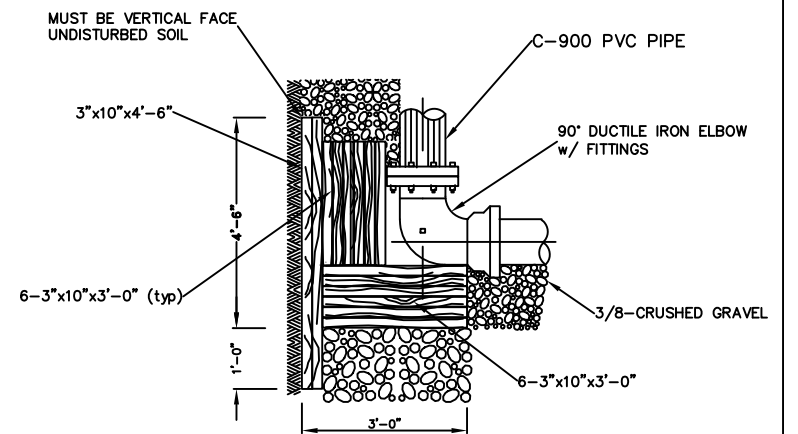
NOTE: STAINLESS STEEL SHEAR RING IN 6", 8", 10" AND 12" SIZES REQ'D.



DETAIL OF SERVICE CONNECTION FOR TAPS TO MAINS
NTS

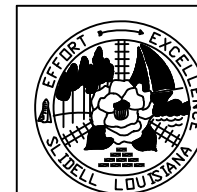


DETAIL OF RISER
NTS

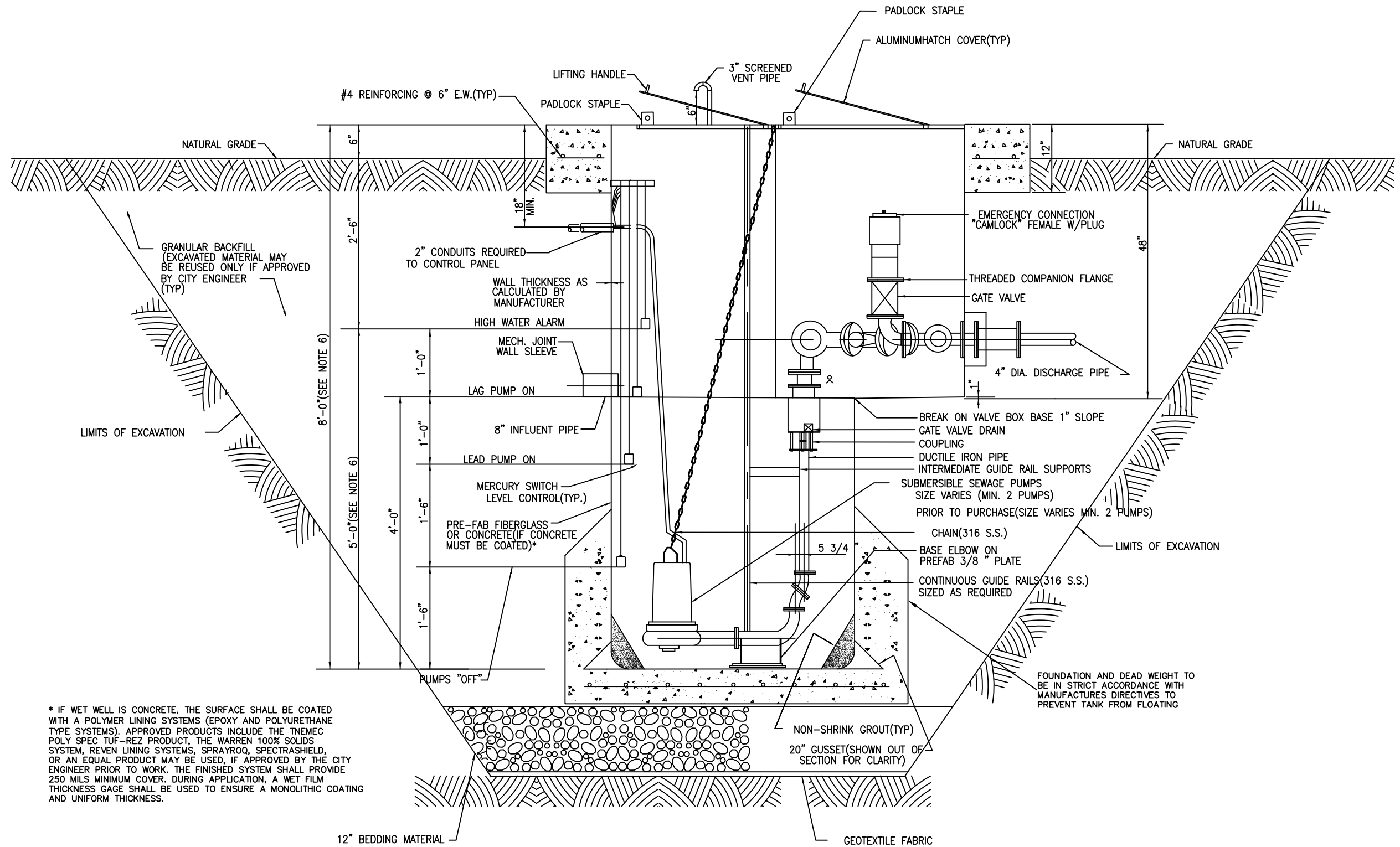


TIMBER THRUST BLOCK DETAIL
NTS

NOTE:
TIMBER BLOCKING REQUIRED AT ALL CHANGES IN DIRECTION GREATER THAN 22 1/2'.
ALL TIMBER BLOCKING SHALL BE TREATED LUMBER.



WATER DETAILS	
CITY OF SLIDELL ENGINEERING DEPT.	
Annual Maintenance Contract FY' 2016	
DRAWN BY: JMC	FILE No: 950-41E
Approved By: DSO	DATE: 4/28/2015



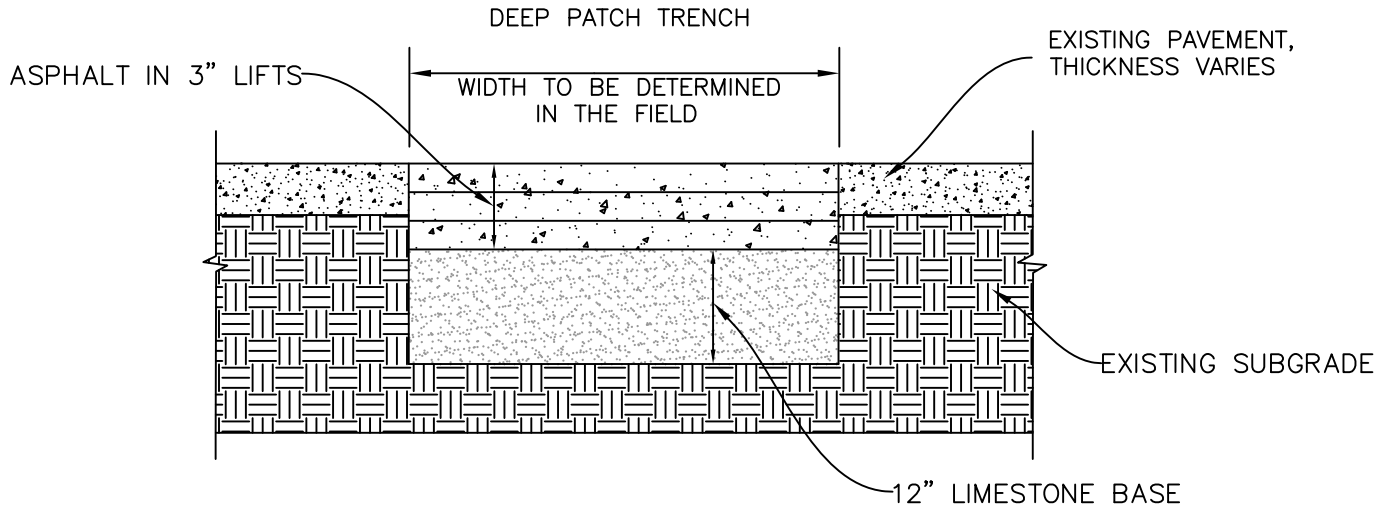
* IF WET WELL IS CONCRETE, THE SURFACE SHALL BE COATED WITH A POLYMER LINING SYSTEMS (EPOXY AND POLYURETHANE TYPE SYSTEMS). APPROVED PRODUCTS INCLUDE THE TNEPEC POLY SPEC TUF-REZ PRODUCT, THE WARREN 100% SOLIDS SYSTEM, REVEN LINING SYSTEMS, SPRAYROQ, SPECTRASHIELD, OR AN EQUAL PRODUCT MAY BE USED, IF APPROVED BY THE CITY ENGINEER PRIOR TO WORK. THE FINISHED SYSTEM SHALL PROVIDE 250 MILS MINIMUM COVER. DURING APPLICATION, A WET FILM THICKNESS GAGE SHALL BE USED TO ENSURE A MONOLITHIC COATING AND UNIFORM THICKNESS.

TYPICAL LIFT STATION DETAILS

NTS



LIFT STATION DETAILS		
CITY OF SLIDELL ENGINEERING DEPT.		
Annual Maintenance Contract FY' 2016		
DRAWN BY: JMC	FILE No: 950-41E	SHT 13
Approved By: DSO	DATE: 4/28/2015	



EXCAVATE 9" EXIST. ASPHALT & BASE MATERIAL,
 REPLACE WITH 9" ASPHALT IN 3 -3" LIFTS

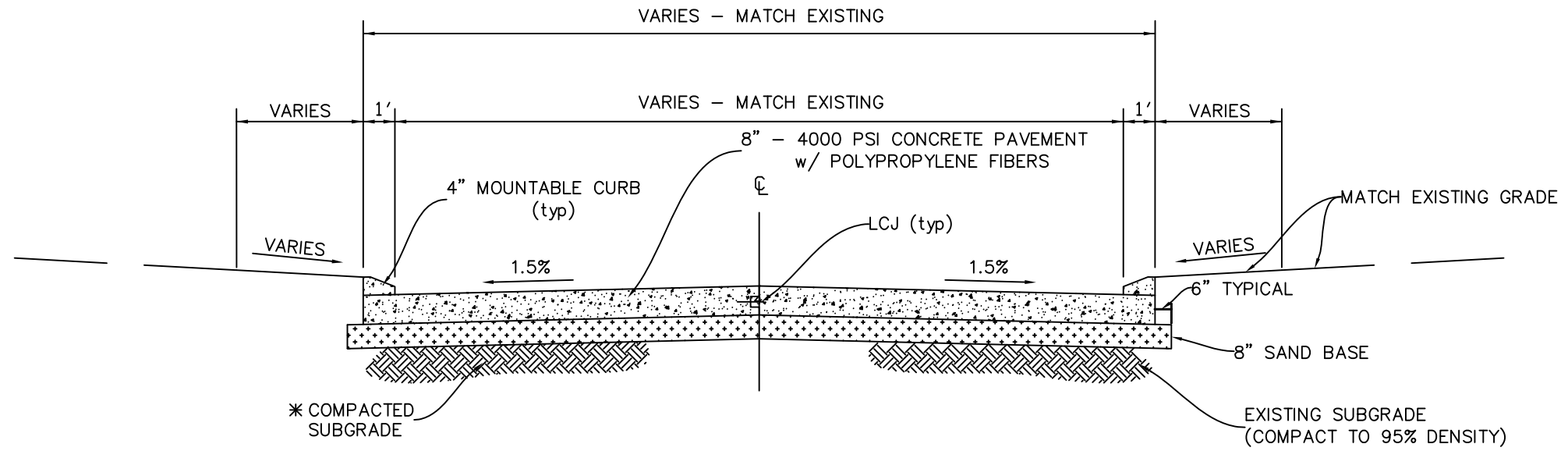
NOTES FOR DEEP PATCH ASPHALT:

1. AREAS OF PATCHING AND POT HOLE REPAIR TO BE DETERMINED IN THE FIELD WITH THE ENGINEER OR REPRESENTATIVE PRESENT PRIOR TO REPAIR.
2. REMOVE THE SURFACING AND BASE MATERIAL TO THE DEPTH AT WHICH BASE FAILURE OCCURRED.
3. AREA TO BE REPAIRED SHALL BE SAWCUT TO FULL DEPTH OF PAVEMENT. THE CUT AROUND THE FAILED AREAS SHALL BE RECTANGULAR WITH FACES STRAIGHT AND VERTICAL AND SHOULD EXTEND AT LEAST 12" INTO GOOD PAVEMENT OUTSIDE THE FAILED AREA.
4. TACK COAT THE PREPARED EDGES OF THE SURFACE SURROUNDING THE AREA BEING REPAIRED TO ENSURE A BOND BETWEEN THEM AND THE PATCH MATERIAL.

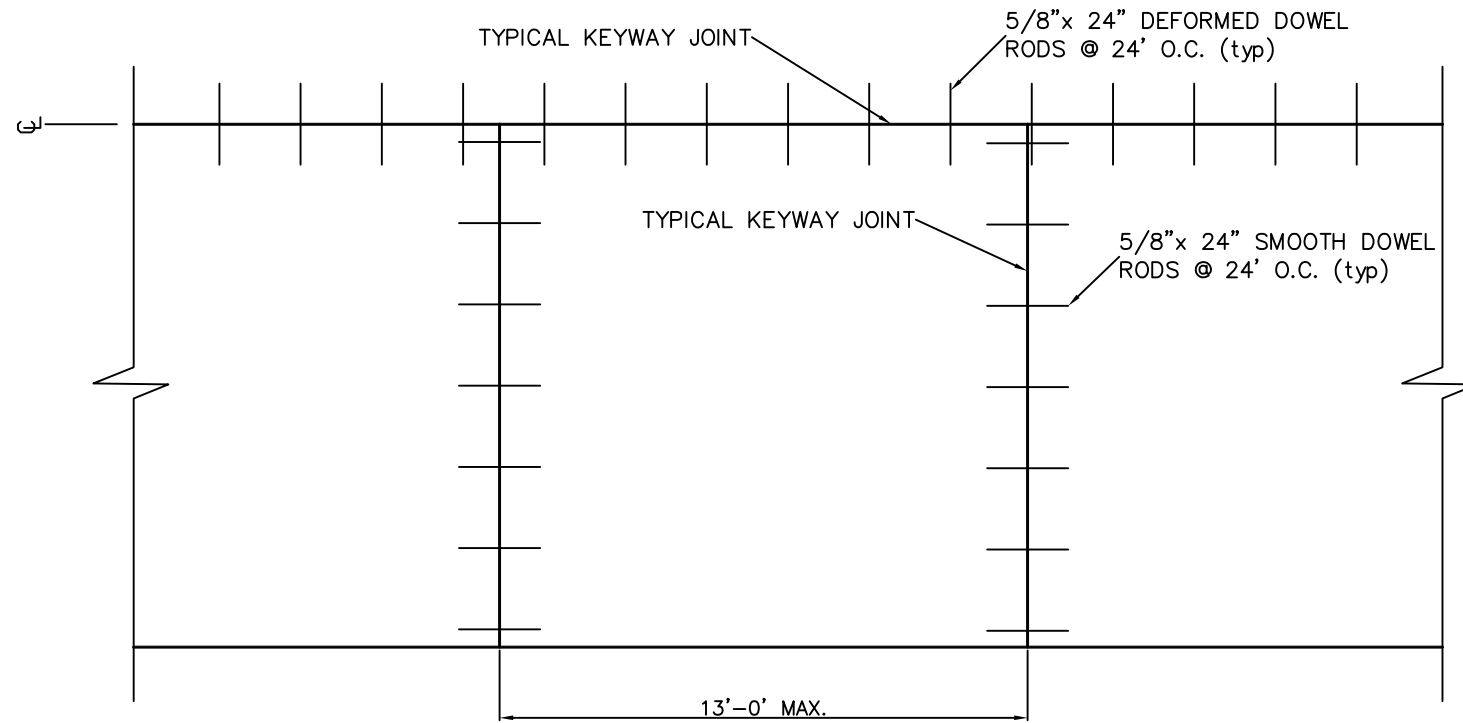
ASPHALT ROADWAY DEEP PATCH FOR REPAIRS

NTS

	ASPHALT DEEP PATCH DETAILS	
	CITY OF SLIDELL ENGINEERING DEPT.	
	Annual Maintenance Contract FY' 2016	
DRAWN BY: JMC	FILE No: 950-41E	SHT 14
Approved By: DSO	DATE: 4/28/2015	



TYPICAL PROPOSED ROADWAY SECTION



STANDARD SPLIT STREET DETAIL



STANDARD STREET REPAIRS		
CITY OF SLIDELL ENGINEERING DEPT.		
Annual Maintenance Contract FY' 2016		
DRAWN BY: JMC	FILE No: 950-41E	SHT 15
Approved By: DSO	DATE: 4/28/2015	