

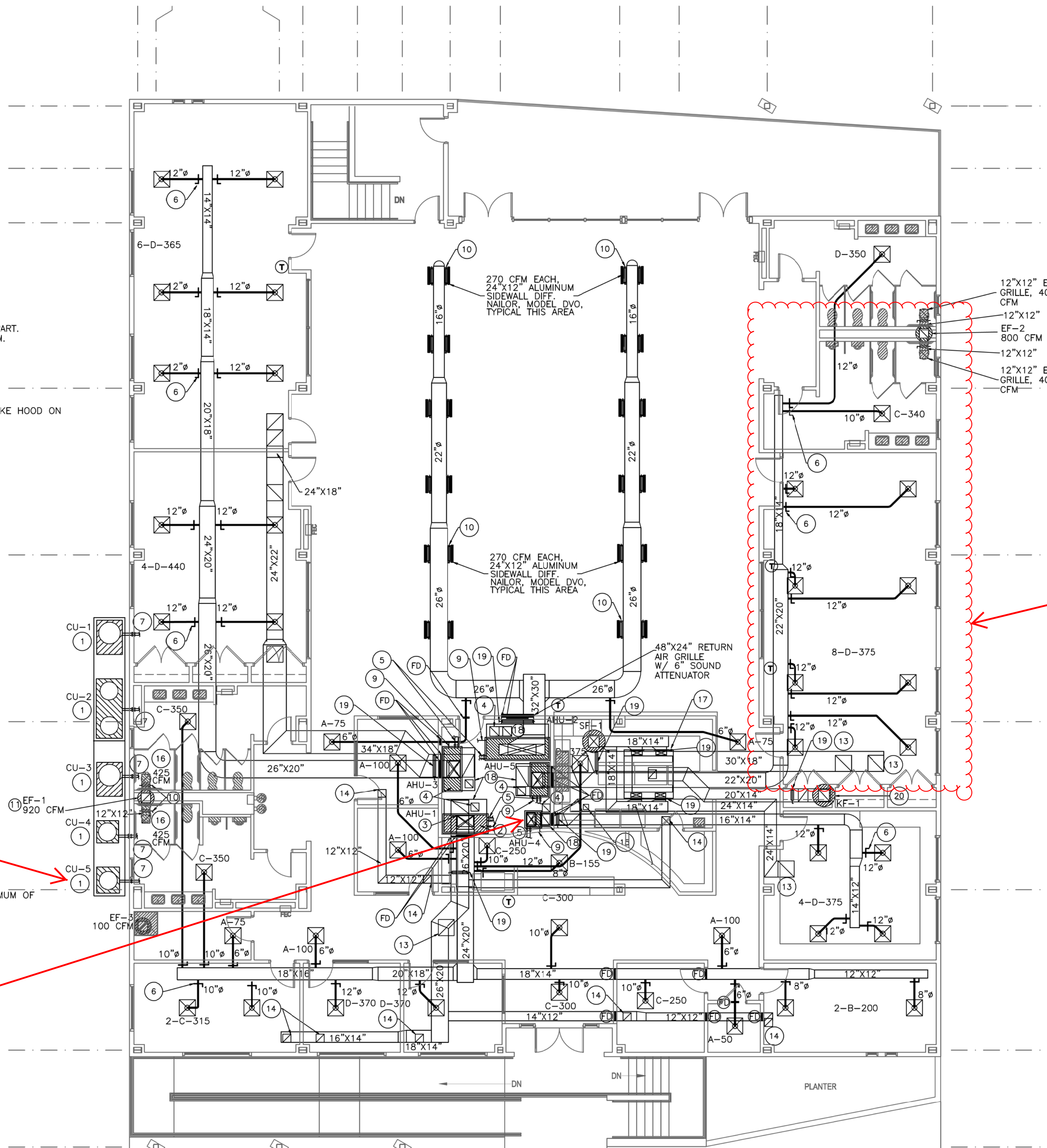


MECHANICAL PLAN NOTES:

- 1 CONDENSING UNIT MOUNTED ON PLATFORM, LOCATE A MINIMUM OF 3'-0" APART. VERIFY MOUNTING HEIGHT WITH ARCHITECT. RE: CIVIL DRAWING FOR PLATFORM.
- 2 AUX. DRAIN PAN W/ FLOAT SWITCH UNDER ENTIRE UNIT.
- 3 FLEX. CONNECTION TYPICAL INLET AND DISCHARGE OF UNIT.
- 4 16"x14" OUTSIDE AIR DUCT W/ OPPOSED BLDE DAMPER UP TO FILTER INTAKE HOOD ON ROOF W/ PRE-FABRICATED ROOF CURB. LOCATE OUTSIDE AIR INTAKE A MINIMUM OF 15'-0" FROM ANY EXHAUST FAN OR PLUMBING VENT.
- 5 ROUTE REFRIGERANT LINES DOWN INSIDE OF THE WALL, TURN OUT APPROX. 12" ABOVE PLATFORM AND ROUTE TO CONDENSING UNIT. SEAL WALL PENETRATION WATER TIGHT.
- 6 SPIN COLLAR W/ AIR SCOOP AND M.V.D., TYPICAL ROUND DUCT TAKE-OFF.
- 7 REFRIGERANT LINES (TYPICAL) ROUTE UP EXTERIOR WALL THROUGH TO THE ATTIC TOWARD THE RESPECTIVE AIR HANDLING UNIT. REFRIGERANT LINES SHALL BE SIZED IN STRICT ACCORDANCE WITH MANUFACTURER'S RECOMMENDATIONS.
- 8 REFRIGERANT LINES (TYPICAL) ROUTE TO OUTSIDE WALL TOWARD RESPECTIVE CONDENSING UNIT. REFRIGERANT LINES SHALL BE SIZED IN STRICT ACCORDANCE WITH MANUFACTURER'S RECOMMENDATIONS.
- 9 1-1/4" CONDENSATE DRAIN LINE W/ AIR TRAP, ROUTE TO NEAREST PLUMBING VENT. INSULATE COND. DRAIN LINE, REFER TO SPECS.
- 10 MANUAL VOLUME DAMPER, LOCKABLE AND ADJUSTABLE, TYPICAL.
- 11 16"x14" EXHAUST AIR DUCT UP TO EXHAUST FAN "EF-1, 2, & 3" ON ROOF W/ PRE-FABRICATED ROOF CURB. LOCATE ON BACK SIDE OF RIDGE. EXHAUST FAN MUST BE LOCATED 15'-0" MINIMUM FROM ANY OUTSIDE AIR INTAKE HOOD.
- 12 14"x14" OUTSIDE AIR DUCT UP TO FILTER INTAKE HOOD ON ROOF W/ PRE-FABRICATED ROOF CURB. LOCATE OUTSIDE AIR INTAKE A MINIMUM OF 15'-0" FROM ANY EXHAUST FAN OR PLUMBING VENT.
- 13 24"x24" EGGRATE RETURN AIR GRILLE, TYPICAL.
- 14 12"x12" EGGRATE RETURN AIR GRILLE, TYPICAL.
- 15 8"x8" OUTSIDE AIR DUCT UP TO FILTER INTAKE HOOD ON ROOF W/ PRE-FABRICATED ROOF CURB. LOCATE OUTSIDE AIR INTAKE A MINIMUM OF 15'-0" FROM ANY EXHAUST FAN OR PLUMBING VENT.
- 16 16"x16" EXHAUST GRILLE, SEE PLANS FOR CFM.
- 17 KITCHEN HOOD, REFER TO SHEET M1.3 FOR DETAIL.
- 18 RETURN AIR PLENUM FULL SIZE OF RETURN AIR OPENING, TYPICAL.
- 19 OPPOSED BLADE DAMPER, SAME SIZE AS DUCT, TYPICAL.
- 20 KITCHEN EXHAUST FAN LOCATED ON ROOF WITH ROOF CURB. LOCATE A MINIMUM OF 15'-0" FROM ANY FRESH AIR INTAKE.
- FD FIRE DAMPER, TYPICAL. CONTRACTOR TO VERIFY WITH ARCHITECTURAL LIFE SAFETY PLAN.

GENERAL NOTES:

1. ALL A.H. UNITS SHALL HAVE A SMOKE DETECTOR IN THE SUPPLY AND 125 DEGREE F. FIRESTAT INSTALLED IN THE RETURN.
2. ALL UNITS SHALL HAVE FILTER RACKS ON BACK WITH GASKETED HINGED DOOR.
3. PROVIDE AND INSTALL A LOW AMBIENT CONTROL KIT DOWN TO 10 DEGREES F. ON ALL EQUIPMENT.
4. ALL SPLIT SYSTEM EQUIPMENT SHALL HAVE SINGLE POINT ELECTRICAL CONNECTION. SINGLE POINT ELECTRICAL CONNECTIONS.
5. ALL SPLIT SYSTEM REFRIGERANT LINE SIZES SHALL BE SIZED AS PER EQUIPMENT MANUFACTURER RECOMMENDATIONS.
6. ALL DUCTWORK IN ROOM 110 (MAIN ROOM) SHALL BE DOUBLE WALL WITH PERFORATED LINER AND PAINTGRIP FINISH.



1 MECHANICAL FLOOR PLAN

SCALE: 1/8" = 1'-0"

SLIDELL SENIOR CITIZEN CENTER
01.08.1074
CITY OF SLIDELL
SLIDELL, LOUISIANA
CONSTRUCTION DOCUMENTS

DATE: 03.05.09
PROJECT NO: 01-08-1074

REVISIONS:		
NO	DATE	DESCRIPTION

DRAWN BY: KGV
CHECKED BY: FST
SHEET TITLE

MECHANICAL
FLOOR PLAN
SHEET NO

M1.1

