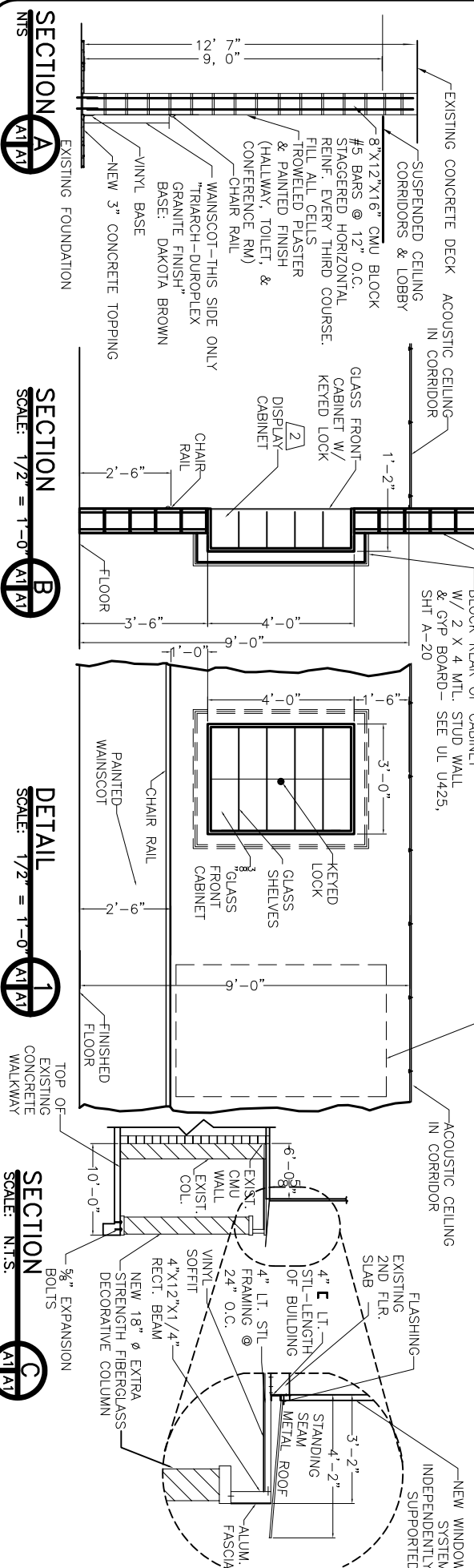


**FIRST FLOOR PLAN**  
SCALE: 1/8" = 1'-0"

SEE DRAWING A-1  
IN ALTERNATE BID PACKAGE  
FOR ALTERNATE HVAC SYSTEM  
(ALTERNATE BID #2)



**SECTION A**  
SCALE: 1/2" = 1'-0"

**SECTION B**  
SCALE: 1/2" = 1'-0"

**DETAIL**  
SCALE: 1/2" = 1'-0"

**SECTION C**  
SCALE: N.T.S.

| ROOM                | FLOOR    | BASE       | WALLS        | CEILING                 | CLG HT    | REMARKS      |
|---------------------|----------|------------|--------------|-------------------------|-----------|--------------|
| 100 STORAGE         | CONCRETE | VINYL TILE | CERAMIC TILE | SCORED/STAINED CONCRETE | 2'-6 7/8" | CLEAN & SEAL |
| 101 CONFERENCE ROOM | CONCRETE | VINYL TILE | CERAMIC TILE | SCORED/STAINED CONCRETE | 9'-0"     | CLEAN & SEAL |
| 102 UNDER MEZZ      | CONCRETE | VINYL TILE | CERAMIC TILE | SCORED/STAINED CONCRETE | 9'-0"     | CLEAN & SEAL |
| 103 NOT USED        | CONCRETE | VINYL TILE | CERAMIC TILE | SCORED/STAINED CONCRETE | 9'-0"     | CLEAN & SEAL |
| 104 RESTROOM        | CONCRETE | VINYL TILE | CERAMIC TILE | SCORED/STAINED CONCRETE | 9'-0"     | CLEAN & SEAL |
| 105 RESTROOM        | CONCRETE | VINYL TILE | CERAMIC TILE | SCORED/STAINED CONCRETE | 9'-0"     | CLEAN & SEAL |
| 106 RESTROOM        | CONCRETE | VINYL TILE | CERAMIC TILE | SCORED/STAINED CONCRETE | 9'-0"     | CLEAN & SEAL |
| 107 NORTH LOBBY     | CONCRETE | VINYL TILE | CERAMIC TILE | SCORED/STAINED CONCRETE | 9'-0"     | CLEAN & SEAL |
| 108 CLOSET          | CONCRETE | VINYL TILE | CERAMIC TILE | SCORED/STAINED CONCRETE | 9'-0"     | CLEAN & SEAL |
| 109 OPEN AREA       | CONCRETE | VINYL TILE | CERAMIC TILE | SCORED/STAINED CONCRETE | 9'-0"     | CLEAN & SEAL |
| 110 CORRIDOR        | CONCRETE | VINYL TILE | CERAMIC TILE | SCORED/STAINED CONCRETE | 9'-0"     | CLEAN & SEAL |
| 111 VESTIBULE       | CONCRETE | VINYL TILE | CERAMIC TILE | SCORED/STAINED CONCRETE | 9'-0"     | CLEAN & SEAL |
| 112 OPEN AREA       | CONCRETE | VINYL TILE | CERAMIC TILE | SCORED/STAINED CONCRETE | 9'-0"     | CLEAN & SEAL |
| 113 OPEN AREA       | CONCRETE | VINYL TILE | CERAMIC TILE | SCORED/STAINED CONCRETE | 9'-0"     | CLEAN & SEAL |
| 114 OPEN AREA       | CONCRETE | VINYL TILE | CERAMIC TILE | SCORED/STAINED CONCRETE | 9'-0"     | CLEAN & SEAL |
| 115 OPEN AREA       | CONCRETE | VINYL TILE | CERAMIC TILE | SCORED/STAINED CONCRETE | 9'-0"     | CLEAN & SEAL |
| 116 SOUTH LOBBY     | CONCRETE | VINYL TILE | CERAMIC TILE | SCORED/STAINED CONCRETE | 9'-0"     | CLEAN & SEAL |
| 117 SOUTH LOBBY     | CONCRETE | VINYL TILE | CERAMIC TILE | SCORED/STAINED CONCRETE | 9'-0"     | CLEAN & SEAL |
| 118 NORTH ENTRY #1  | CONCRETE | VINYL TILE | CERAMIC TILE | SCORED/STAINED CONCRETE | 9'-0"     | CLEAN & SEAL |
| 119 NORTH ENTRY #2  | CONCRETE | VINYL TILE | CERAMIC TILE | SCORED/STAINED CONCRETE | 9'-0"     | CLEAN & SEAL |
| 120 NORTH LOBBY     | CONCRETE | VINYL TILE | CERAMIC TILE | SCORED/STAINED CONCRETE | 9'-0"     | CLEAN & SEAL |
| 121 NORTH ENTRY #3  | CONCRETE | VINYL TILE | CERAMIC TILE | SCORED/STAINED CONCRETE | 9'-0"     | CLEAN & SEAL |
| 122 CLOSET          | CONCRETE | VINYL TILE | CERAMIC TILE | SCORED/STAINED CONCRETE | 9'-0"     | CLEAN & SEAL |
| 123 CLOSET          | CONCRETE | VINYL TILE | CERAMIC TILE | SCORED/STAINED CONCRETE | 9'-0"     | CLEAN & SEAL |
| 124 CLOSET          | CONCRETE | VINYL TILE | CERAMIC TILE | SCORED/STAINED CONCRETE | 9'-0"     | CLEAN & SEAL |
| 125                 | CONCRETE | VINYL TILE | CERAMIC TILE | SCORED/STAINED CONCRETE | 9'-0"     | CLEAN & SEAL |

| DOOR                | TYPE   | FRAME  | HINGE        | LOCK    | ACCESSORIES | REMARKS  |
|---------------------|--|--|--------------|---------|-------------|----------|
| 1 (2) 3/0x7/0       | SOLID WOOD                                     | ALUMINUM   | BURGLARPROOF | SLIDING | PASSAGE     | EXTERIOR |
| 2 3/0x7/0           | HOLLOW METAL                                   | ALUMINUM   | SLIDING      | PASSAGE | PRIVACY     | EXTERIOR |
| 3 3/0x7/0           | STOREFRONT                                     | MASONITE   | SLIDING      | PASSAGE | PRIVACY     | EXTERIOR |
| 4 3/0x7/0           | ALUMINUM                                       | WOOD   | BURGLARPROOF | SLIDING | PASSAGE     | EXTERIOR |
| 5 3/0x7/0           | ALUMINUM                                       | WOOD   | BURGLARPROOF | SLIDING | PASSAGE     | EXTERIOR |
| 6 3/0x7/0           | ALUMINUM                                       | WOOD   | BURGLARPROOF | SLIDING | PASSAGE     | EXTERIOR |
| 7 3/0x7/0           | ALUMINUM                                       | WOOD   | BURGLARPROOF | SLIDING | PASSAGE     | EXTERIOR |
| 8 3/0x7/0           | ALUMINUM                                       | WOOD   | BURGLARPROOF | SLIDING | PASSAGE     | EXTERIOR |
| 9 3/0x7/0           | ALUMINUM                                       | WOOD   | BURGLARPROOF | SLIDING | PASSAGE     | EXTERIOR |
| 10 (2) 3/0x7/0      | ALUMINUM                                       | WOOD   | BURGLARPROOF | SLIDING | PASSAGE     | EXTERIOR |
| 11 10'W/9'H ROLL UP | EQUIPPED WITH ELECTRIC STRIKE OR MAGNETIC LOCK | UNDERCUT ALL DOORS 3/4" TO ALL FOR PROPER EXHAUST AIR FLOW |              |         |             |          |

| WINDOW       | TYPE             | FRAME          | GLASS | FINES | ACCESSORIES | REMARKS                        |
|--------------|------------------|----------------|-------|-------|-------------|--------------------------------|
| BE 18'4x2/10 | FIXED            | VERTICAL SLIDE |       |       |             | STORE FRONT GLASS WALL         |
| CE 18'4x6/0  | HORIZONTAL SLIDE |                |       |       |             | STORE FRONT GLASS WALL - NEW * |
| A 3/0x5/0    | STOREFRONT       | STEEL          |       |       |             | STORE FRONT GLASS WALL *       |
| B 18'4x6/0   | ALUMINUM         | WOOD           |       |       |             | STORE FRONT GLASS WALL *       |
| DE 15'6x9/0  | TINTED           |                |       |       |             |                                |

- NOTES**
- ALL STOREFRONT AND WINDOWS THIS LEVEL SHALL WITHSTAND WIND PRESSURES OF 43.56 PSF.
  - DESIGN WIND SPEED 130 MPH THIS FLOOR
  - ALL WINDOWS AND EXTERIOR GLASS DOORS SHALL BE TINTED TO MATCH NEW WINDOW WALLS ABOVE.
  - VERIFY ALL DIMENSIONS IN FIELD.
  - FLOORS - MIX FOR CONCRETE FLOOR TOPPING SHALL BE 100% STRAIGHT PORTLAND CEMENT. MAXIMUM GRAVEL SIZE SHALL BE 3/4". SCORE CONCRETE W/DIAMOND PATTERN (2' X 2'). STAIN SHALL BE "CHEMSTAIN CS-2 PADDE BROWN" STAIN. USE MANUFACTURERS RECOMMENDED SEALER. FOLLOW MANUFACTURERS INSTRUCTIONS FOR NONSLIP HEAVY TRAFFIC AREAS.
  - ELEVATOR CONTRACTOR SHALL RELOCATE 1ST FLOOR STOPS TO ACCOUNT FOR RAISING FLOOR 3"
- LEGEND**
- NEW 2 HOUR RATED CMU WALLS
  - MURAL PAINTING (BY OTHERS)
  - SECURITY ACCESS DOOR

REVISIONS:

- 07/09/07/04
- 09/21/07/06
- 09/17/07/06
- 09/09/07/06
- 02/27/07
- 02/19/07
- 02/11/07

RENOVATE OFFICE BUILDING

# DAMMON ENGINEERING. INC.

1095 FLORIDA AVENUE 985-649-5832 SLIDELL, LA. 70458  
DAMMONENGINEERING.COM

1ST FLOOR RENOVATE PLAN

ST. TAMMANY PARISH ADMIN. COMPLEX  
520 OLD SPANISH TRAIL  
SLIDELL, LOUISIANA

SHEET

A-1

SCALEAS NOTED

FILE:

JOB NO. 1729

DATE: 1-8-07

DATE: 1-8-07