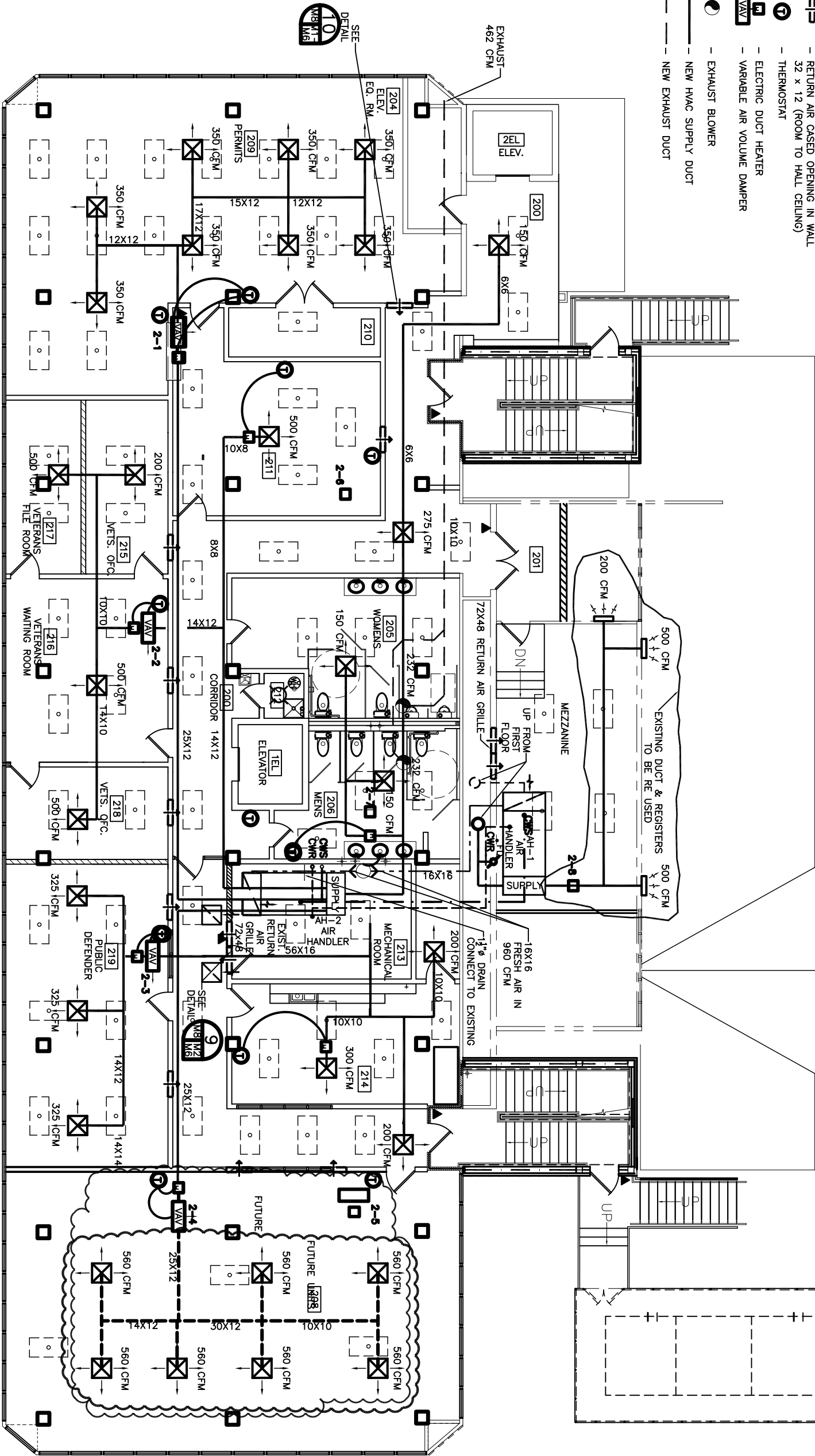


LEGEND

- HVAC AIR REGISTER 24 X 24, TTUS #TMSA-AA
- RETURN AIR GRILLE TO BE TTUS #50 W/1/4 X 1/2 CORE 500 FPM MECH. VELL., TOT. PRESS. .032 H2O (W/ DAMPER) 24 X 24
- RETURN AIR CASPED OPENING IN WALL 32 X 12 (ROOM TO HALL CEILING)
- THERMOSTAT
- ELECTRIC DUCT HEATER
- VARIABLE AIR VOLUME DAMPER
- RETURN VAV
- EXHAUST BLOWER
- NEW HVAC SUPPLY DUCT
- NEW EXHAUST DUCT

- NOTES:**
1. EACH ROOM TO HAVE AN OPENING BETWEEN ROOM CEILING SPACE AND HALL CEILING FOR RETURN AIR (32X12, TYP).
 2. HVAC DUCTS ARE DRAWN DIAGRAMMATICALLY. CONTRACTOR TO INSTALL TO MEET EXISTING CONDITIONS.
 3. WHERE DUCTS AND/OR VAV BOXES ARE SHOWN AS FUTURE, RUN DUCT INTO ROOM AND BLANK OFF. ADJUST AHU BYPASS TO ALLOW RECIRCULATION OF AIR, UNTIL SUCH TIME AS FUTURE UNITS ARE INSTALLED.
 4. EXISTING 72X48 AIR RETURN GRILLE IN WALL OF MECHANICAL ROOM SHALL BE CLEANED AND PAINTED.
 5. ALL NEW DUCTWORK SIZES SHOWN ARE CLEAR INSIDE DIMENSIONS.



2ND FLOOR HVAC EQUIPMENT - VAV

ROOM	VAV NO.	SEN	LAT	TOTAL	CFM	BTU	KW	CARRIER BYPASS VAV
CORR	2-1	73,800	8,560	83,363	2,800	38,100	11.2	35K-16
	2-2	56,889	7,648	64,537	1,700	16,824	4.9	35K-12
	2-3	25,893	3,824	29,717	975	23,079	6.8	35K-8
	2-4	103,572	15,296	118,868	3,920	20,840	8.5	35K-18

2ND FLOOR HVAC EQUIPMENT - HEATERS

ROOM	VAV NO.	SEN	LAT	TOTAL	CFM	BTU	KW	CARRIER BYPASS VAV
	2-1	-	-	-	17,250	5.0	N/A	
	2-6	-	-	-	17,250	5.0	N/A	
	2-7	-	-	-	17,250	5.0	N/A	

SCALE: 3/16" = 1'-0"



SEE DRAWING M-2
IN ALTERNATE BID PACKAGE
FOR ALTERNATE HVAC SYSTEM
(ALTERNATE BID #2)

REVISED: 05-10-07db
REVISED: 05-02-07db
REVISED: 04-09-07db
REVISED: 03-30-07db
REVISED: 03-22-07

<p>RENOVATE OFFICE BUILDING</p> <p>DAMMON ENGINEERING. INC.</p> <p>1095 FLORIDA AVENUE 985-649-5832 SLIDELL, LA. 70458 DAMMONENGINEERING.COM</p>	<p>2ND FLOOR MECHANICAL PLAN</p> <p>ST. TAMMANY PARISH ADMIN. COMPLEX 520 OLD SPANISH TRAIL SLIDELL, LOUISIANA</p>	<p>SCALE: AS NOTED</p> <p>FILE:</p> <p>JOB NO. 1729</p> <p>DATE: 12-07-06</p> <p>SHEET</p> <p style="font-size: 2em; font-weight: bold;">M-2</p> <p>OF</p>
---	---	--