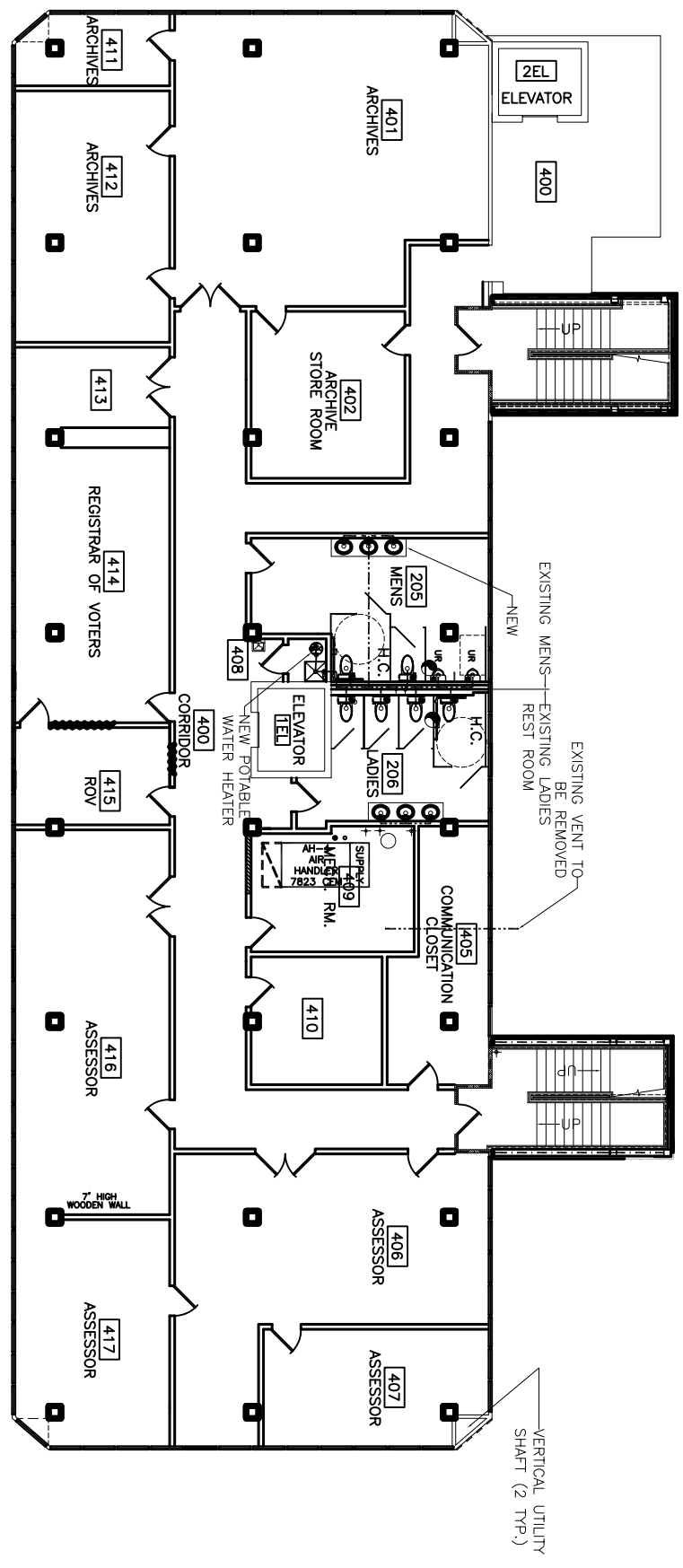


- NOTES:
1. NEW VENT LINES SHALL RUN TO N.E. CORNER VERTICAL OPENING TO ROOF.
 2. SEE DRAWING P-1 FOR GENERAL NOTES.
 3. MENS ROOM WATER CLOSETS, PIPING, PIPING FIXTURES, AND URINALS CAN BE CLEANED AND RE-USED. IF PIPING AND FIXTURES NOT REPLACED, IT MUST BE INSPECTED AND TESTED TO ENSURE IT IS IN PROPER WORKING ORDER.
 4. LADIES ROOM WATER CLOSETS (AND PIPING FIXTURE IN HANDICAPPED W.C. ONLY) CAN BE CLEANED AND REUSED. REPLACE ALL OTHER PIPING AND PIPING FIXTURES. IF PIPING AND FIXTURES IN HANDICAPPED STALL NOT REPLACED, IT MUST BE INSPECTED AND TESTED TO ENSURE IT IS IN PROPER WORKING ORDER.
 5. REPLACE ALL TOILET SEATS AND SANITARY NAPKIN DISPOSAL BINS.
 6. INSTALL OWNER PROVIDED SOAP DISPENSERS AND TOILET PAPER & PAPER TOWEL HOLDERS.

7. INTEGRAL LAVATORY/VANITY, CULTURED MARBLE, SIZE AS SHOWN ON DRAWING A-21.
8. URINALS: TOTD UT447 (QR EQUAL) WITH TOTD TWINNING 16PF FLUSH VALVE (QR EQUAL).
9. WATER CLOSETS: TOTD CT705 (FOR HANDICAP) WITH TOTD TWINNING-32 1.6 GPF FLUSH VALVE, AMERICAN STANDARD 2234 WITH SLDAN III ROYAL 1.6 GPF FLUSHMETER VALVE (QR EQUAL).
10. TOILET SEATS: KOHLER K-4710-1 (MENS), K-4752 (LADIES) (QR EQUALS).
11. PARTITIONS: BOBRICK 1090 SERIES PHENDLIC (QR EQUAL).
12. MIRRORS: SHEET MIRROR 3'-0" HIGH X LENGTH OF VANITY, MOUNTED 3'-4" ABOVE FLOOR.
13. SANITARY NAPKIN DISPOSAL: BOBRICK B354 (LADIES PARTITIONS) (QR EQUAL).



FOURTH FLOOR PLUMBING PLAN
SCALE: 1/8" = 1'-0"

- LEGEND
- ☒ - MOP SINK & STAND
 - ⊕ - 6 GALLON, 120 VAC, 1 PH. COMPACT WATER HEATER
 - - SANITARY SEWER LINE

REVISED 2/19/07
REVISED 1/24/07

<p>RENOVATE OFFICE BUILDING</p> <p>DAMMON ENGINEERING, INC.</p> <p>1095 FLORIDA AVENUE 985-649-5832 SLIDELL, LA. 70458 DAMMONENGINEERING.COM</p>	<p>4TH FLOOR PLUMBING PLAN</p> <p>ST. TAMMANY PARISH ADMIN. COMPLEX 520 OLD SPANISH TRAIL SLIDELL, LOUISIANA</p>	<p>SCALE: AS NOTED</p> <p>FILE:</p> <p>JOB NO. 1729</p> <p>DATE: 1-8-07</p> <p>SHEET</p> <p style="font-size: 2em; font-weight: bold;">P-4</p> <p>OF</p>
---	---	--