

2ND FLOOR HVAC EQUIPMENT SCHEDULE - FAN COILS

| FAN# | FAN COIL NUMBER | SENS | COOLING LOAD (BTU/H) | LATENT TOTAL | GMW WATER (BASED ON TOTAL) | CFM SPECIFIED | HEAT LOAD (BTU/H WATTS) | HEATER STRIP (KW) | OUT/AIR FAN COIL TYPE (BASED ON CARRIER) |
|--------|-----------------|---------|----------------------|--------------|----------------------------|---------------|-------------------------|-------------------|--|
| 209 | FC 2-1 | 24,601 | 3,186 | 27,787 | 5.6 | 1,000 | 9,300 | 2,725 | 70/42CE10-3 ROW COIL |
| 209 | FC 2-2 | 24,601 | 3,186 | 27,787 | 5.6 | 1,000 | 9,300 | 2,725 | 70/42CE10-3 ROW COIL |
| 209 | FC 2-3 | 24,601 | 3,186 | 27,787 | 5.6 | 1,000 | 9,300 | 2,725 | 70/42CE10-3 ROW COIL |
| 200 | FC 2-4 | 8,177 | 1,912 | 10,089 | 2.0 | 300 | 10,260 | 3,006 | 40/42CE03-4 ROW COIL |
| 211 | FC 2-5 | 13,452 | 2,868 | 16,320 | 3.3 | 600 | 6,750 | 1,978 | 60/42CE06-3 ROW COIL |
| 215 | FC 2-6 | 21,821 | 2,868 | 24,689 | 4.9 | 900 | 11,030 | 3,232 | 60/42CE10-3 ROW COIL |
| 216 | FC 2-7 | 23,049 | 2,868 | 25,917 | 5.2 | 1,000 | 8,190 | 2,400 | 60/42CE10-4 ROW COIL |
| 218 | FC 2-8 | 11,779 | 1,912 | 13,691 | 2.7 | 500 | 4,635 | 1,358 | 40/42CE06-3 ROW COIL |
| 208 | FC 2-9 | 25,693 | 3,824 | 29,517 | 5.9 | 1,100 | 10,585 | 3,101 | 80/42CE10-4 ROW COIL |
| 208 | FC 2-10 | 25,693 | 3,824 | 29,517 | 5.9 | 1,100 | 10,585 | 3,101 | 80/42CE10-4 ROW COIL |
| 208 | FC 2-11 | 25,693 | 3,824 | 29,517 | 5.9 | 1,100 | 10,585 | 3,101 | 80/42CE10-4 ROW COIL |
| 208 | FC 2-12 | 25,693 | 3,824 | 29,517 | 5.9 | 1,100 | 10,585 | 3,101 | 80/42CE10-4 ROW COIL |
| 208 | FC 2-13 | 25,693 | 3,824 | 29,517 | 5.9 | 1,100 | 10,585 | 3,101 | 80/42CE10-4 ROW COIL |
| 214 | FC 2-14 | 13,318 | 2,868 | 16,186 | 3.2 | 560 | 6,615 | 1,938 | 60/42CE06-4 ROW COIL |
| 204 | FC 2-15 | 19,048 | 0 | 19,048 | 3.8 | 800 | 0 | NONE | 0/42CE08-3 ROW COIL |
| 205 | FC 2-16 | 8,177 | 1,912 | 10,089 | 2.0 | 300 | 10,260 | 3,006 | 40/42CE03-4 ROW COIL |
| TOTALS | | 321,089 | 45,886 | 366,975 | 73.4 | 13,460 | 138,565 | 37,892 | 930 |
| | | | TONS= 28.2 | | | | | | * FUTURE UNITS |

NOTES

SEE DWG. M-9 "CHILLED WATER RISER DIAGRAM" FOR PIPE SIZES.

SEE DWG. M-11 "OUTSIDE AIR RISER DIAGRAM" FOR DUCT SIZES.

CONDENSATE LINES MAY BE RUN DIRECTLY TO DRAIN ON SAME FLOOR WHERE SUFFICIENT DROP IS AVAILABLE.

INSULATE ALL PIPING.

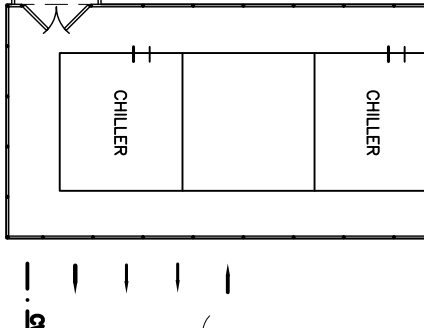
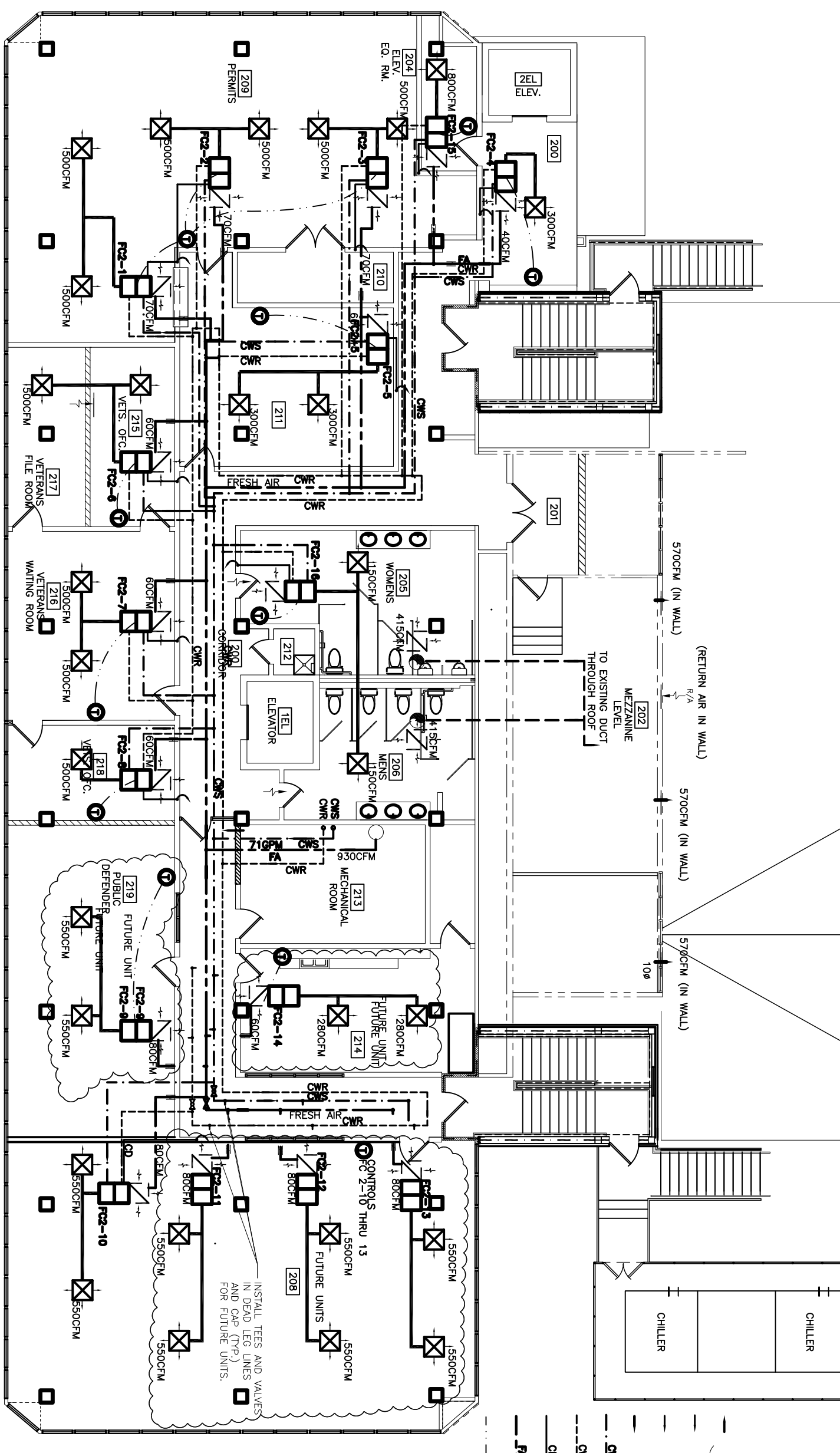
5 FT. LONG HVAC FLEX HOSE MAY BE SUBSTITUTED AT DUCT RUN ENDS.

ALTERNATE BID #2

HVAC FAN COIL UNITS IN LIEU OF VAV SYSTEM

NOTES:

1. ONLY WORK PERTAINING TO HVAC SYSTEM IS PART OF ALTERNATE #2. ALL OTHER WORK IS PART OF BASE BID.



SECOND FLOOR MECHANICAL PLAN

SCALE: 3/16" = 1'-0"



NOTE:
SIZE F. A. DUCT TO ALLOW FOR 1200 FT/ MIN. VELOCITY.

REVISED: 05/17/07/ab
REVISED: 04/26/07/ab
REVISED: 03/07/07/ab
REVISED: 02/23/07 dd
REVISED: 01/22/07

2ND FLOOR MECHANICAL PLAN

ST. TAMMANY PARISH ADMIN. COMPLEX
520 OLD SPANISH TRAIL
SLIDELL, LOUISIANA

RENOVATE OFFICE BUILDING

DAMMON ENGINEERING, INC.

1095 FLORIDA AVENUE 985-649-5832 SLIDELL, LA. 70458
DAMMONENGINEERING.COM

SCALE: AS NOTED

FILE:

JOB NO. 1729

DATE: 1-8-07

SHEET

M-2

OF