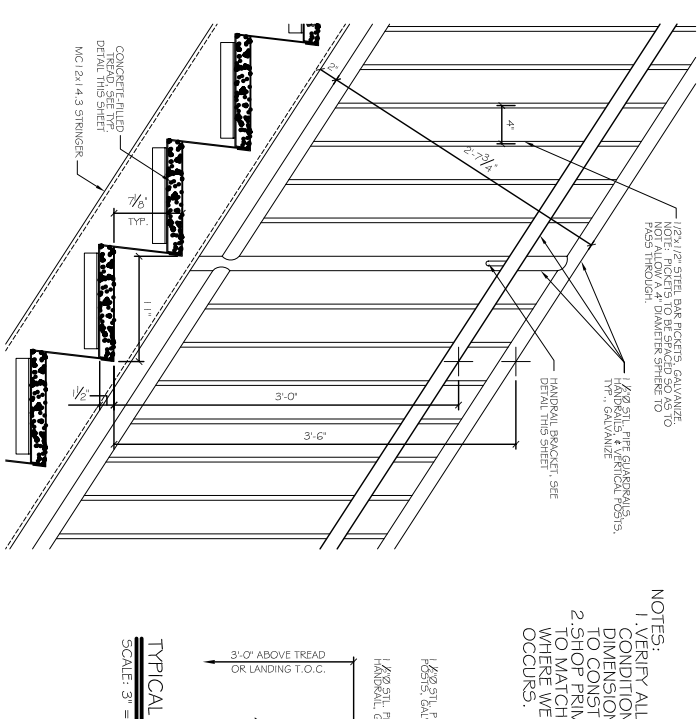
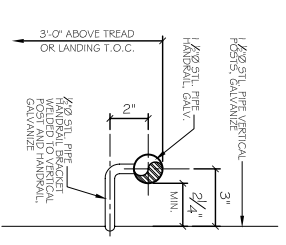


TYPICAL TREAD DETAIL
SCALE: 1-1/2" = 1'-0"

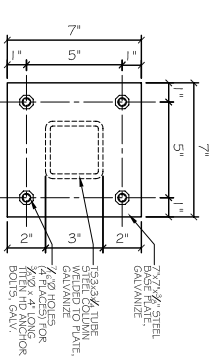


TYPICAL GUARDRAIL DETAIL
SCALE: 1-1/2" = 1'-0"

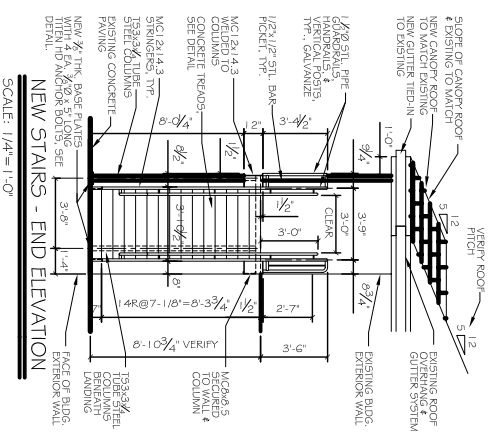
NOTES:
1. VERIFY ALL EXISTING CONDITIONS & DIMENSIONS PRIOR TO CONSTRUCTION.
2. SHOP PRIME & PAINT TO MATCH ALL STEEL WHERE WELDING OCCURS.



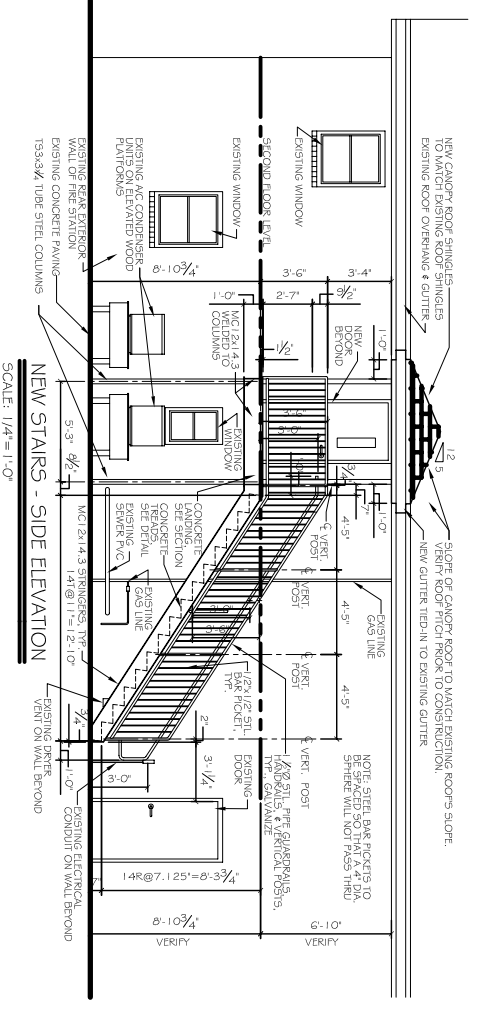
TYPICAL HANDRAIL DETAIL
SCALE: 3" = 1'-0"



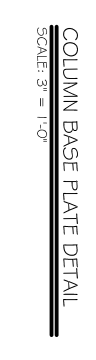
COLUMN BASE PLATE DETAIL
SCALE: 3" = 1'-0"



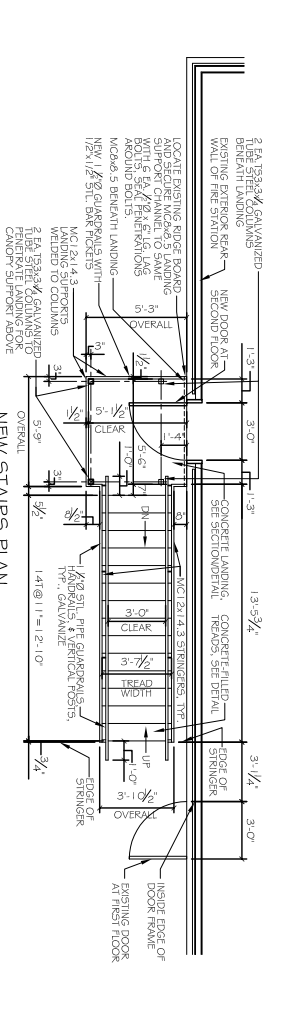
NEW STAIRS - END ELEVATION
SCALE: 1/4" = 1'-0"



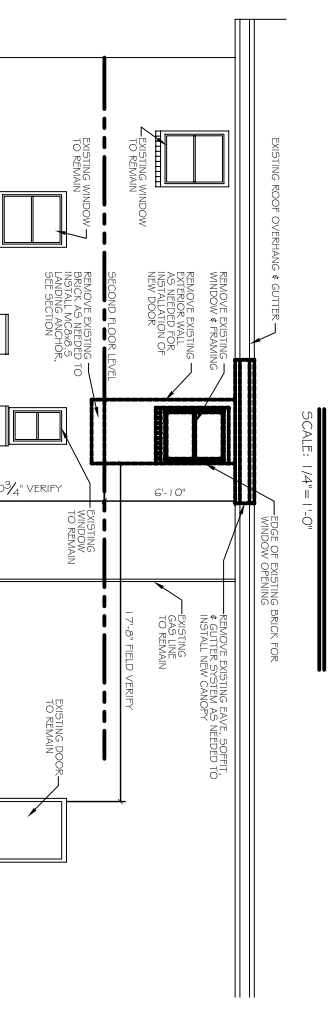
NEW STAIRS - SIDE ELEVATION
SCALE: 1/4" = 1'-0"



NEW STAIRS - SECTION
SCALE: 1/4" = 1'-0"



NEW STAIRS PLAN
SCALE: 1/4" = 1'-0"



EXISTING WALL "DEMO" ELEVATION
SCALE: 1/4" = 1'-0"

SECTION/END VIEW

CANOPY & COLUMN TO BEAM ANCHOR DETAILS
SCALE: 3" = 1'-0"

SECTION/SIDE VIEW

REVISIONS	DATE	DESCRIPTION

DAMMON ENGINEERING, INC.
 Architects & Engineers
 Chief Architect: Kevin J. Kinchen, NCARB
 Chief Engineer: Brian Mistch, PE
 554 Old Spanish Trail
 Shreve, LA 70468
 www.dammonengineering.com
 info@dammonengineering.com
 P: 985.641.5833
 F: 985.641.5950

SHEET NO. **A1**
 OF 1