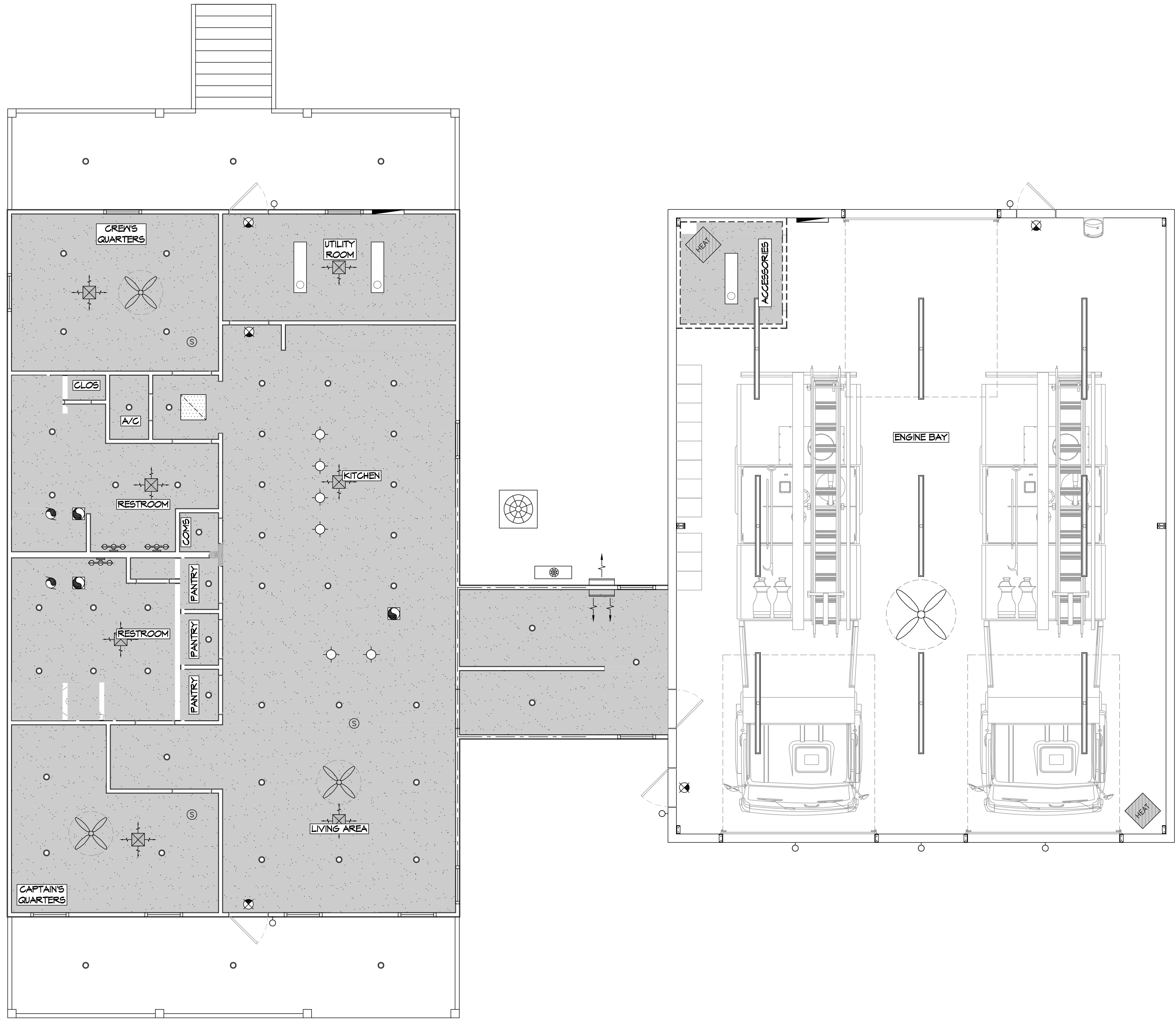


FILE NAME: J:\Projects\2022\1102022 - Allen Road Fire Station 19\Drawings\Current\Drawings\106 - Reflected Ceiling Plan.dwg DATE: 09/22/2022 11:02:02 AM



10 REFLECTED CEILING PLAN
SCALE: 1/4" = 1'-0"

DAMMON ENGINEERING, INC.

LOUISIANA & MISSISSIPPI

Chief Engineer: Brian Misch, PE
 www.dammonengineering.com
 info@dammonengineering.com
 554 Old Spanish Trail
 Slidell, LA 70458
 PH: 985.649.5832

REVISIONS	DATE

SEAL:

ST. TAMMANY FIRE PROTECTION DISTRICT No. 1
FIRE STATION 19

ALLEN ROAD
 SLIDELL, LOUISIANA 70461
 JOB No: _____ DATE: 09-22-2022
 DRAWN BY: CKD CHECKED BY: JMS

SHEET TITLE:
REFLECTIVE CEILING PLAN

DRAWING NUMBER:
A106