

### GENERAL LIGHTING NOTES

- ALL WORK SHALL COMPLY WITH APPLICABLE NATIONAL, STATE, & LOCAL CODES, RULES, REGULATIONS, & REQUIREMENTS OF THE SERVICE UTILITY COMPANY.
- GENERAL CONTRACTOR SHALL NOTIFY THE ARCHITECT IMMEDIATELY IF ANY CONFLICTS OCCUR BETWEEN LIGHTING & ANY OTHER TRADE. DO NOT PROCEED WITH INSTALLATION IN THAT AREA UNTIL CONFLICT HAS BEEN RESOLVED TO THE SATISFACTION OF THE ARCHITECT & ENGINEER.
- REFER TO ARCHITECTURAL DRAWINGS FOR EXACT LOCATION & MOUNTING INSTRUCTIONS FOR ALL LIGHT FIXTURES. NOTIFY THE ARCHITECT & ENGINEER OF ANY DISCREPANCIES BETWEEN THESE PLANS & THE ARCHITECTURAL PLANS RELATING TO QUANTITY, TYPE & LOCATION OF DEVICES AND/OR FIXTURES.
- WHEN SPECIFIC LIGHT FIXTURE HAS BEEN SPECIFIED IN THE FIXTURE SCHEDULE, ELECTRICAL CONTRACTOR SHALL PROVIDE COMPLETE ASSEMBLY INCLUSIVE ALL PARTS & HARDWARE TO INSURE PROPER FUNCTIONING FIXTURE.
- ALL CONDUCTORS SHALL BE A MINIMUM OF #12 AWG UNLESS NOTED OTHERWISE.
- ALL 120V RUNS LONGER THAN 60' SHALL BE #10 AWG & 277V RUNS LONGER THAN 150' SHALL BE #10 AWG UNLESS NOTED OTHERWISE.
- ALL CONDUCTORS SHALL BE COPPER.
- WHERE CONDUCTOR SIZES ARE NOTED ON DRAWINGS, THAT WIRE SIZE SHALL BE THROUGH THE ENTIRE RUN UNLESS OTHERWISE NOTED.
- MOUNTED LIGHT SWITCHES 48" AFF UNLESS NOTED OTHERWISE ON ARCHITECTURAL DRAWINGS.
- WHERE MORE THAN ONE SWITCH OCCURS IN THE SAME LOCATION, THEY SHALL BE INSTALLED IN A GANG TYPE BOX UNDER ONE COVER PLATE. ALL GANGED SWITCHES SHALL HAVE A COMMON SEAMLESS FACEPLATE. EACH MULTI-GANGED BOX SHALL BE NO MORE THAN SIX (6) SWITCHES WIDE. WHERE MORE THAN SIX (6) SWITCHES ARE SHOWN AT ONE (1) LOCATION, ADDITIONAL MULTI-GANGED BOXES SHALL BE STACKED VERTICALLY & THE WIDTH OF THE MULTI-GANGS SHALL BE AS EVEN AS POSSIBLE.
- EACH DIMMER SWITCH SHALL HAVE A WATTAGE RATING 25% HIGHER THAN THE TOTAL WATTAGE OF ALL LIGHTS TO BE CONTROLLED BY THE DIMMER. DIMMER SIZES 600, 1000, 1500, & 2000 WATTS, LUTRON NOVA T-STAR. WHERE SWITCHES ARE GANGED WITH DIMMERS, THE SWITCHES SHALL ALSO BE LUTRON NOVA T-STAR. FLUORESCENT & LOW VOLTAGE DIMMERS SHALL BE LUTRON NOVA T-STAR.
- WHERE FLUORESCENT FIXTURES ARE SHOWN TO BE DIMMED, THE FIXTURES SHALL HAVE DIMMING TYPE BALLASTS WHICH ARE COMPATIBLE WITH THE SPECIFIED DIMMERS.
- WHERE LED FIXTURES/LAMPS ARE SHOWN TO BE DIMMED, THE DIMMER SHALL BE COMPATIBLE WITH THE FIXTURE/LAMP SPECIFIED OR PROVIDED.
- ALL EMERGENCY EXIT LIGHT FIXTURES SHALL HAVE 90 MINUTE BATTERY BACKUP WITH INTEGRAL TEST BUTTON & SHALL BURN CONTINUOUSLY.
- ALL FLUORESCENT FIXTURES THAT UTILIZE DOUBLE-ENDED LAMPS & CONTAIN BALLASTS SHALL BE PROVIDED WITH A DISCONNECTING MEANS IN ACCORDANCE WITH NEC 410.136.
- PROVIDE SERVICES OF A FIRE/SMOKE DETECTION & ALARM COMPANY TO DESIGN & INSTALL ALARM SYSTEM TO MEET REQUIREMENTS OF THE STATE FIRE MARSHALL & THE FIRE DISTRICT.

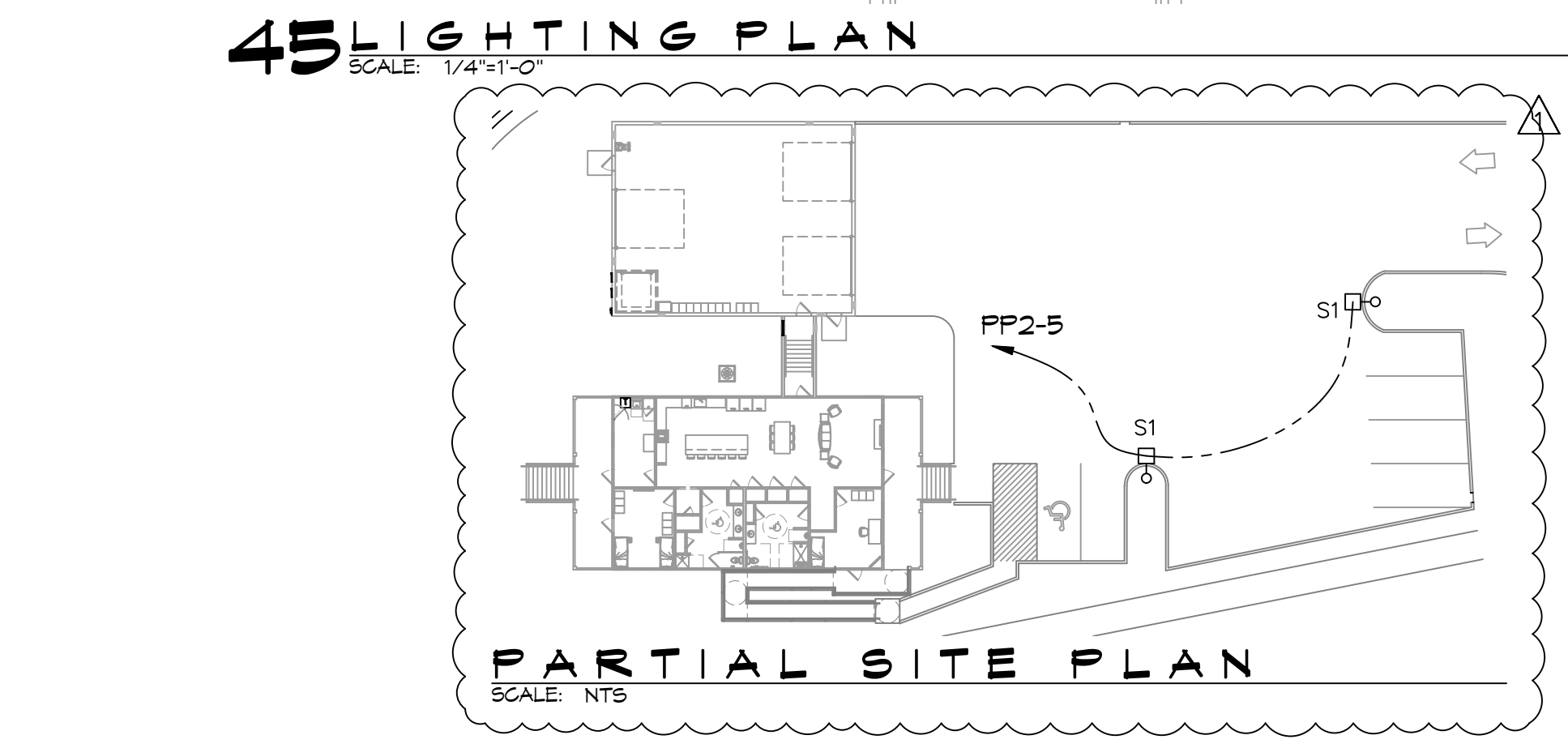
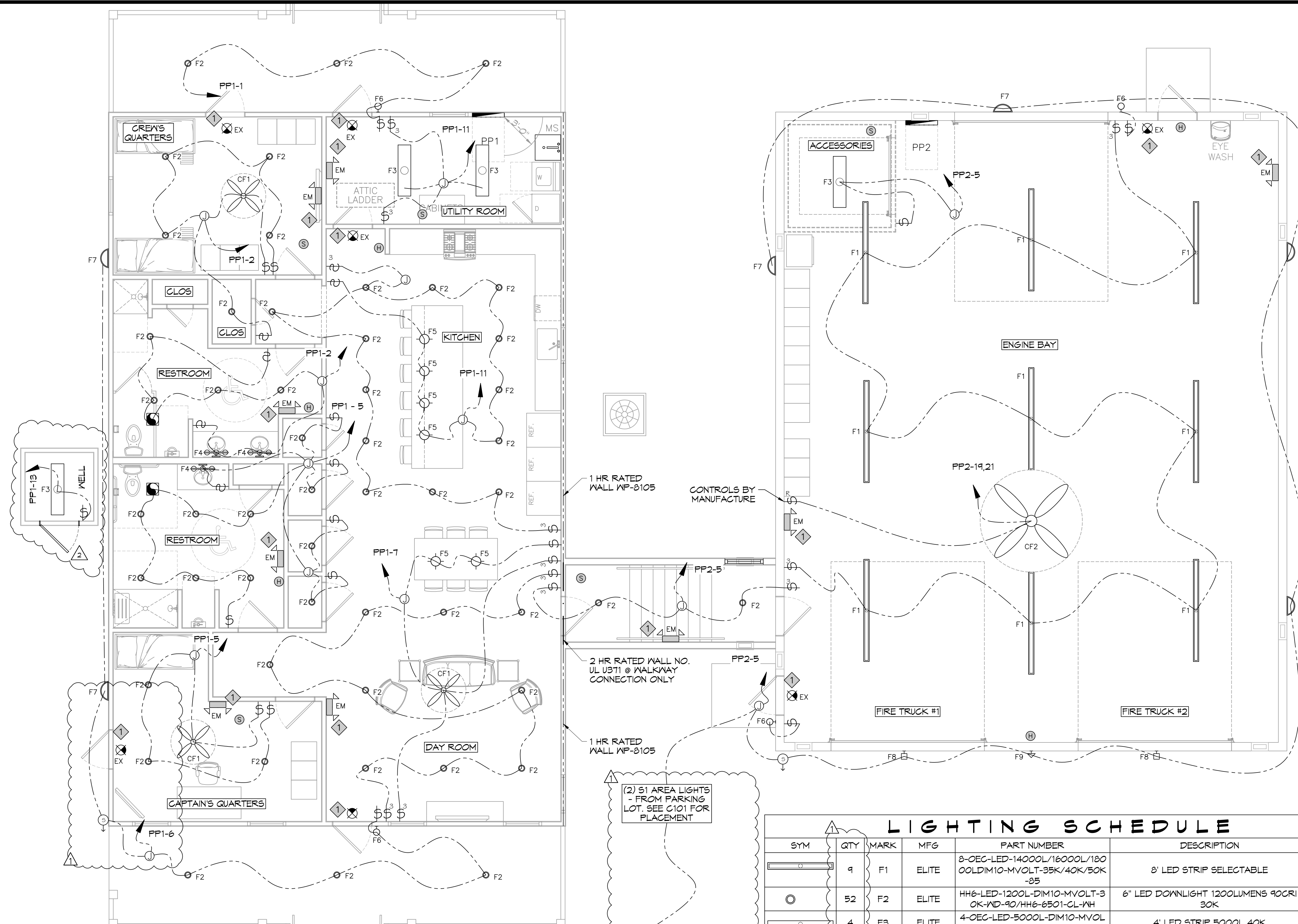
### KEYED NOTES

- 1 PROVIDE CONNECTION TO UN-SWITCHED HOT OF LIGHTING CIRCUIT & SHALL HAVE 90 MINUTE EMERGENCY BATTERY BACKUP.

### LIGHTING LEGEND

- |    |                       |   |                             |
|----|-----------------------|---|-----------------------------|
| ⊕  | LIGHT SWITCH          | ⊕ | HEAT DETECTOR               |
| ⊕R | RHEOSTAT LIGHT SWITCH | ⊕ | JUNCTION BOX                |
| ⊕3 | 3-WAY LIGHT SWITCH    | ⊕ | DAYLIGHT SENSOR             |
| ⊕  | SMOKE DETECTOR        | ⊕ | EXHAUST FAN - SEE MECH PLAN |
|    |                       | ⊕ | HOME RUN                    |

AS-BUILT  
1-31-24



### LIGHTING SCHEDULE

SYM	QTY	MARK	MFG	PART NUMBER	DESCRIPTION	HEIGHT
⊕	9	F1	ELITE	8-OEC-LED-14000L/16000L/18000L-DIM10-MVOLT-35K/40K/50K-85	8' LED STRIP SELECTABLE	
⊕	52	F2	ELITE	HH6-LED-1200L-DIM10-MVOLT-3 OK-ND-90/HH6-6501-CL-VH	6" LED DOWNLIGHT 1200LUMENS 90CRI 30K	9' AFF
⊕	4	F3	ELITE	4-OEC-LED-5000L-DIM10-MVOL T-40K-85	4' LED STRIP 5000L 40K	9' AFF
⊕	3	F4	ELITE	ECH-BL-LED-1003-3	24" VANITY LED LIGHT	9' AFF
⊕	6	F5	ELITE	ECH-PL-1025	12" PENDANT	
⊕	4	F6	LIGHT ALARMS	CAMACSDDB-CMP	LED EXT WALL LIGHT - EGRESS	9' AFF
⊕	6	F7	ORION LIGHTING	LSWF1-A1(3000LUMENS)-UNV-FD-8CS(30K)XX-BB-SP	LED WALLPACK 3000 LUMENS 30K BATTERY BACKUP	7' AFF
⊕	2	F8	ALUMILITE	AR14-12/LED-JV-30K-XX-P6-SS-CCA	14" RLM 12W LED STRAIGHT SHROUD 30K PRISMATIC GLASS NET	14'
⊕	1	F9	ALUMILITE	AR14-12/LED-JV-30K-XX-P6-SC A	14" RLM 12W LED ANGLED SHROUD 30K PRISMATIC GLASS NET	11'
⊕	3	CF1	MINKA AIRE	MINKA AIRE F546-B5	42" 5 BLADE INDOOR CEILING FAN	
⊕	1	CF2	BIG ASS FANS	BIG ASS FAN POWERFOIL 8-08	8' DIAMETER INDUSTRIAL FAN	
⊕	7	EX	ELITE	ELX-603 -R-W	LED EXIT	
⊕	9	EM	ELITE	ELM-LED-803-W	LED EMG LIGHT W/BATTERY BACKUP	
⊕	2	S1	ORION LIGHTING	IAHP1-A1-UNV-FD-T30-XX-T4-T52 -SP	AREA LIGHT TYPE IV, 30K, 76W 13000 LUMENS ON 16' SQUARE STRAIGHT STEEL POLE. SEE SIGHT PLAN FOR PLACEMENT	

**DAMMON ENGINEERING, INC.**  
LOUISIANA & MISSISSIPPI

www.dammonengineering.com  
info@dammon.com  
Sulzer, LA 70488  
PH: 985.649.5832

State Engineer: Brian Mistich, PE  
Sixth Floor, 1000 Poydras Street  
Sulzer, LA 70488

DATE: 07-28-2022  
REVISIONS:  
# DESCRIPTION  
1 REVISED LIGHTING  
2 RELOCATED WELL

ST. TAMMANY FIRE PROTECTION DISTRICT NO. 1  
**FIRE STATION 19**

57047 ALLEN ROAD  
SULZER, LOUISIANA 70461  
JOB NO: 2495  
DATE: 05-16-2022  
DRAWN BY: C&D  
CHECKED BY: BAW

SHEET TITLE: LIGHTING PLAN  
DRAWING NUMBER:  
**E102**

SHEET No: 26 of 30