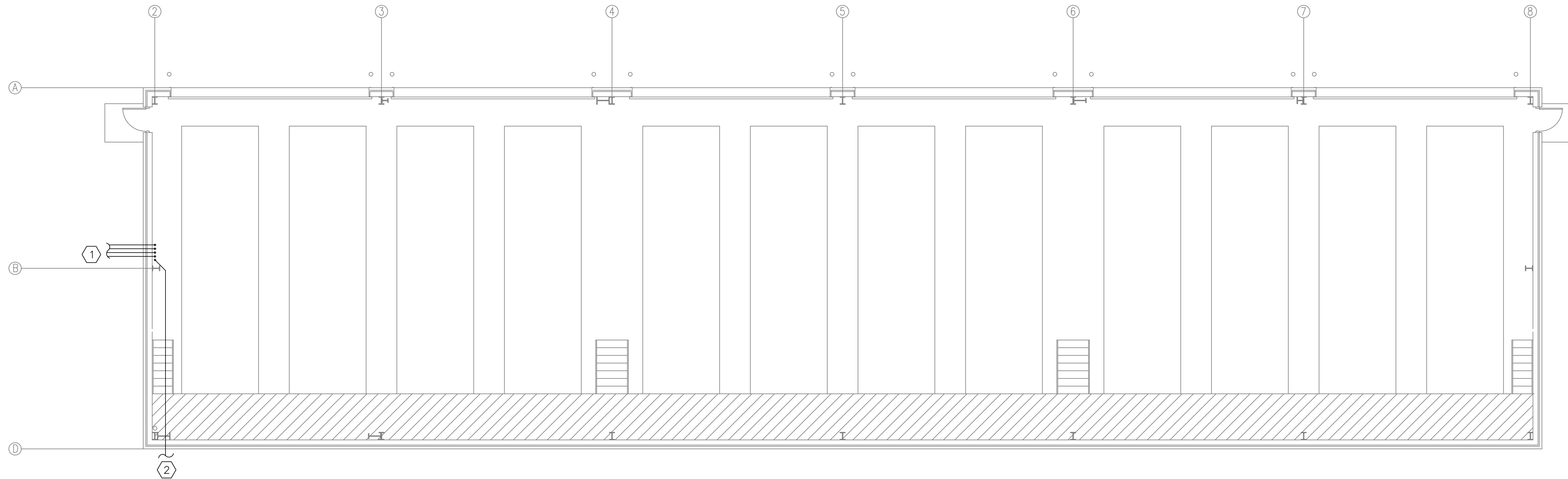


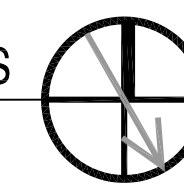
REVDATE: FILE NAME: C:\Schlafly\ENGR 08010\_SOF Rivertine Drawings Elec 5-As-buils ES.1.dwg LAYOUT NAME: ES.3 PLOTTED: Friday, May 28, 2010 - 3:29pm



**BOAT STORAGE BLDG. 2442  
FLOOR PLAN - TELECOMMUNICATIONS**

SCALE: 1/8" = 1'-0"  
0 4' 8' 16'


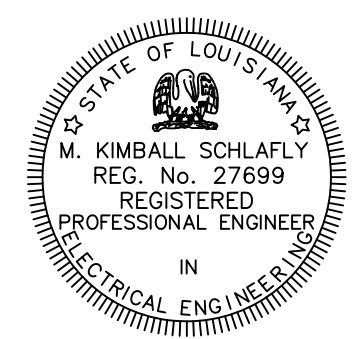
PLAN NORTH



SPECIFIC NOTES THIS SHEET:

- ① 4-2" SCH40 PVC ROUTED FROM BLDG 2440. SEE SHEET E2.3 FOR CONTINUATION. TURN UP THROUGH SLAB USING WRAPPED RIGID STEEL TO A POINT MINIMUM 6" ABOVE FLOOR. EXTEND TO JUNCTION BOX USING RIGID STEEL CONDUIT THEREAFTER. CONDUITS SHALL BE UTILIZED FOR FIRE ALARM, INTERCOM, AND INTEGRATED SECURITY SYSTEM CABLING. SEE RESPECTIVE SHOP DRAWINGS FOR FURTHER INFORMATION.
- ② 1-2" AND 1-1" C ROUTED TO EXTERIOR. SEE SHEET E2.3 FOR CONTINUATION. 1-2" C TO BE USED FOR INTEGRATED SECURITY WIRING TO PEDESTRIAN GATE. 1-1" C TO BE USED FOR FIRE ALARM WIRING TO PIV LOCATED ON EXTERIOR OF BUILDING.

**RECORD DRAWING  
LETTER DATED  
5-27-10**

AS-BUILT REVISIONS	DATE	APPR	SYN	DESCRIPTION
5-27-10				
				
<b>SCHLAFLY ENGINEERING LLC</b> 121 SOUTH GENOIS STREET NEW ORLEANS LA 70119 PHONE 504-415-3347 FAX 504-482-7943 M. KIMBALL SCHLAFLY, P.E. LA REG 27699 <small>SEPTEMBER 4, 2009</small>				
				
DES: K. SCHLAFLY   DRW: K. SCHLAFLY				
REVIEWED BY: R. WILTSE				
PM/DM: T. ARTRIP				
CHIEF ENG/ARCH: P. DAMMON				
DEPARTMENT OF THE NAVY	NAVAL FACILITIES ENGINEERING COMMAND	NAVAL FACILITIES ENGINEERING COMMAND SOUTHEAST	NAVAL AIR STATION JACKSONVILLE	MISSISSIPPI
1PT SOUTH ATLANTIC	JOHN C. STENNIS SPACE CENTER	SOF RIVERINE AND COMBATANT	CRAFT OPERATIONS FACILITY	BLDG. 2442 FLOOR PLAN - TELCO
CODE ID. NO. N4412	SIZE D			
SCALE: 1/8" = 1'-0"				
MAXIMO NO. #####				
STA. PROJ. NO. P-210				
WORK ORDER NO. 510247				
CONSTR. CONTR. NO. N62467-05-D-0096				
NAVFAC DRAWING NO. 15026765				
SHEET 118 OF 132				
<b>E5.3</b>				
<small>DRAWFORM REVISION: 01 JAN 2009</small>				