

Remote Area: BLDG 2442 BOAT STORAGE

CALCULATION DESIGN CRITERIA:	
STANDARD:	NFPA #13 - Ord Hazard Gr 2
OCCUPANCY CLASS:	New Business
MAX. COVERAGE PER HEAD:	101.25 FT
DENSITY:	.20 GPM/FT ² for 3900 FT
SPRINKLER:	TY-FRB
ORIFICE:	1 1/2" K= 8.0
WATER FLOW INFORMATION:	
STATIC:	72.0 PSI
RESIDUAL:	56.0 PSI
FLOW:	1100 GPM
AT CITY CONNECTION, SYSTEM REQUIRES:	
160.33 GPM @ 52.510 PSI	
956.90 GPM @ 52.151 PSI	

NO HOSE INCLUDED (SEE NOTE #2)

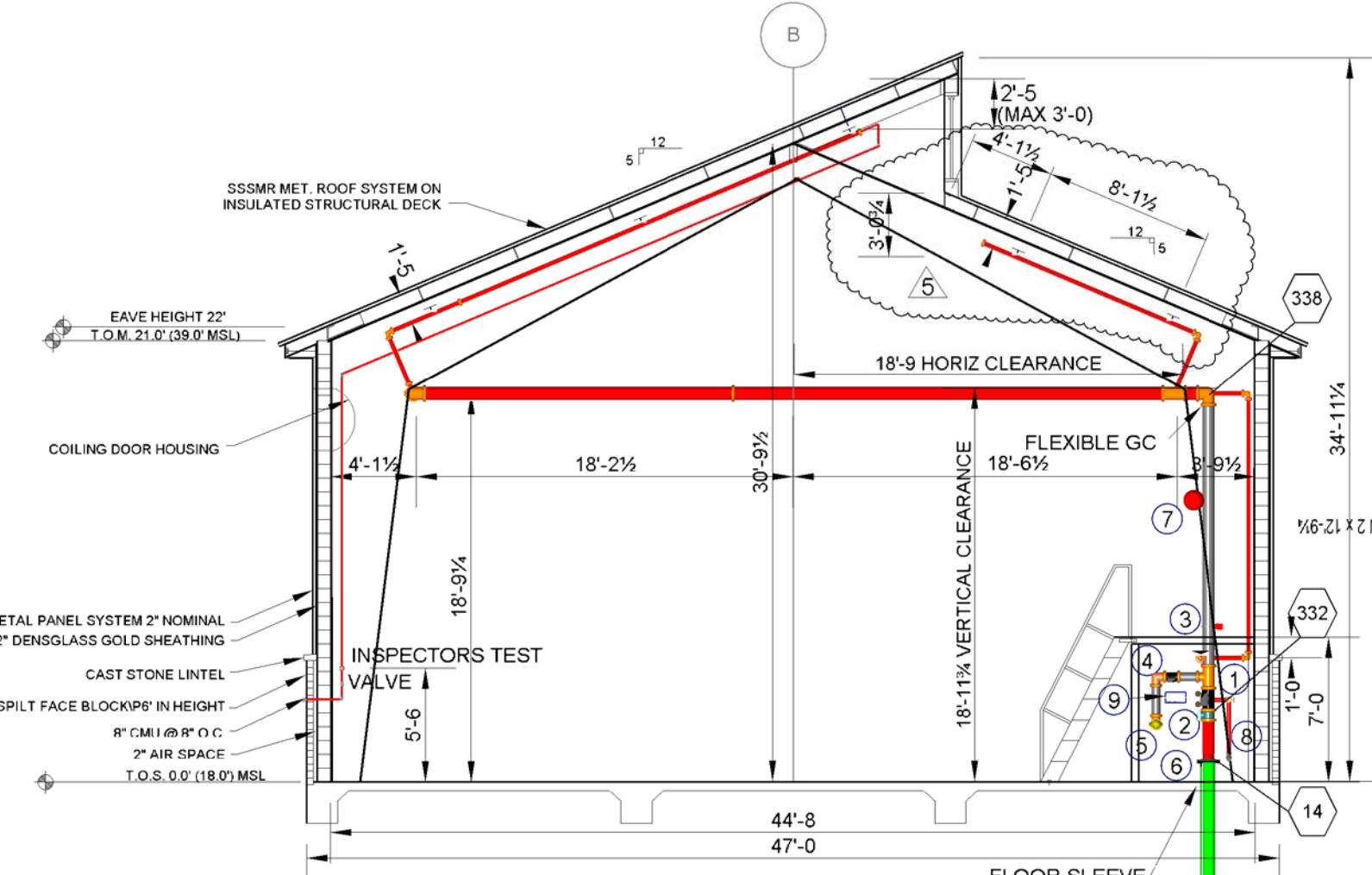
Remote Area: BELOW PLATFORM

CALCULATION DESIGN CRITERIA:	
STANDARD:	NFPA #13 - Ord Hazard Gr 2
OCCUPANCY CLASS:	New Business
MAX. COVERAGE PER HEAD:	90.0 FT
DENSITY:	.20 GPM/FT ² for 7 Spkrs per NFPA
SPRINKLER:	TY-FRB 13.11.2.3.4.2
ORIFICE:	1/2" K= 5.6
WATER FLOW INFORMATION:	
STATIC:	72.0 PSI
RESIDUAL:	56.0 PSI
FLOW:	1100 GPM
AT CITY CONNECTION, SYSTEM REQUIRES:	
160.33 GPM @ 52.510 PSI	
956.90 GPM @ 52.151 PSI	

NO HOSE INCLUDED (SEE NOTE #2)

GROOVE COUPLINGS ARE RIGID UNLESS NOTE 'FLEXIBLE GC'

BOAT STORAGE BLDG. 2442 PLAN
SCALE: 1/8"=1'-0"



RISER EQUIPMENT LEGEND

- 1) 6" RELIABLE MODEL G RIGHT-CHECK RISER VALVE
 - 2) 6" GROOVED BUTTERFLY VALVE W/ TAMPER SWITCH
 - 3) 6" FLOW SWITCH
 - 4) 4" TYCO MODEL CV-1F CHECK VALVE
 - 5) 4" X 2 1/2" X 2 1/2" FIRE DEPARTMENT CONNECTION NST
 - 6) 6" X 11" SCR FLANGE
 - 7) 24V ELECTRIC BELL OUTSIDE 6"
 - 8) 2" DRAIN & ITC TO OUTSIDE
 - 9) 6-HEAD SPRINKLER CABINET
- 15) SEE DRAWING FP1 FOR LOCATION OF BACKFLOW PREVENTOR

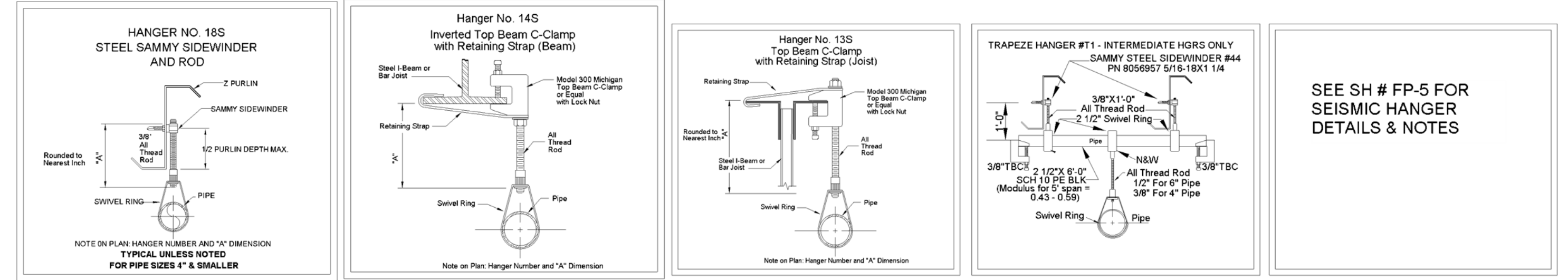
NEW SPRINKLERS								
TYPE	SIN	K=	ORIFICE	TEMP	FINISH	CANOPY	SYMBOL	QTY
TYCO TY-FRB QR	TY4131	8.0	17/32"	200 F	BRASS	UPRIGHT	○	80
TYCO TY-FRB QR	TY4131	8.0	17/32"	286 F	BRASS	UPRIGHT	○	10
TYCO TY-FRB QR	TY3131	5.6	1/2"	200 F	BRASS	UPR W/G/S1*	●	12
TOTAL THIS SHEET								102

* TYCO G1/S1 GUARD WITH SHIELD

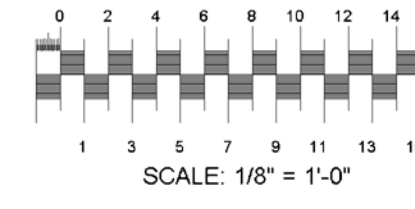
GENERAL NOTES

- 1) SCOPE OF WORK
SIMPLEXGRINNELL TO PROVIDE TWO NEW WET PIPE FIRE SPRINKLER SYSTEMS (1) FOR THE NEW OPERATIONS BLDG #2440 & THE BOAT MAINTENANCE BLDG #2441, AND (1) FOR THE BOAT STORAGE BLDG #2442.
- 2) BASIS OF DESIGN:
LIGHT HAZARD AREAS - DESIGN DENSITY: .10 GPM/SQ. FT. OVER 3000 SQ. FT.
ORDINARY HAZARD GROUP 1 - DESIGN DENSITY: .15 GPM/SQ. FT. OVER 3000 SQ. FT.
ORDINARY HAZARD GROUP 2 - DESIGN DENSITY: .20 GPM/SQ. FT. OVER 3000 SQ. FT. (EXCEPT AS NOTED - BELOW PLATFORM)
AREA HAS BEEN INCREASED BY 30% WHERE ROOF SLOPE EXCEEDS 2:12 AS PER NFPA 13 11.2.3.2.4.
AS DIRECTED BY THE FPE FOR NAVFAC SOUTHEAST, THE HOSE ALLOWANCE HAS BEEN DELETED FROM ALL CALCULATIONS. THE 500 GPM HOSE ALLOWANCE REQUIRED BY UFC 3-600-01, TABLE 4-1, PUSHES THE DEMAND OVER THE SUPPLY CURVE.
- 3) PIPE AND FITTINGS
1 1/2" AND SMALLER PIPE TO BE THREADED BLACK SCH 40 WITH BLACK C.I. SCREW FITTINGS.
2" AND LARGER PIPE TO BE GROOVED BLACK SCH 10 WITH GROOVED FITTINGS & COUPLINGS AND WELDED OUTLETS. SPRINKLERS TO BE CENTER OF TILE.
- 4) HANGERS
ALL HANGERS AND SUPPORTS TO CONFORM TO NFPA 13 AND PIPE MANUFACTURERS RECOMMENDATIONS.
- 5) FIRE CAULKING
ALL PENETRATIONS THROUGH FIRE RATED WALLS ARE TO BE SEALED WITH FIRE CAULK TO MAINTAIN THE FIRE RATING.
- 6) SPRINKLER SYSTEMS SHALL INCLUDE EARTHQUAKE PROTECTION PER D401001.1.2. SEE SH # FP-5 FOR DETAILS & NOTES.

ALL MATERIAL TO BE AMERICAN MADE



SEE SH # FP-5 FOR SEISMIC HANGER DETAILS & NOTES



NOTE: ALL HANGERS TO BE # 18S U.O.N.

09/08/09	REVISED PER NAVFAC COMMENTS RECD 9/03/09	APPR
08/26/09	REVISED PER URS COMMENTS RECD 8/17/09	DATE
07/02/09	REVISED PER LATEST DRAWINGS	SYMBOL
06/26/09	REVISED PER URS COMMENTS & SEISMIC DESIGN	DESCRIPTION
06/08/09	REVISED PER FPE COMMENTS	DATE

tyco
Fire & Security
SimplexGrinnell
5800 JEFFERSON HWY., STE. A
HARRAHAN, LOUISIANA 70123
AE LOGO

DEPARTMENT OF THE NAVY
NAVAL FACILITIES ENGINEERING COMMAND
NAVFAC SOUTHEAST
JOHN C. STENNIS SPACE CENTER, MISSISSIPPI
SOF RIVERINE AND COMBATANT CRAFT OPERATIONS FACILITY
BOAT STORAGE BLDG 2442

CODE ID NO.	80001	SIZE	D
SCALE:	1/8" = 1'-0"		
MAXIMUM NO.	###		###
STA. PROJ. NO.	P-210		
WORK ORDER NO.	510247		
CONSTR. CONTR. NO.	N62467-05-D-0096		
NAVFAC DRAWING NO.	15026772		
SHEET	125	OF	132
SIMPLEXGRINNELL SH #FP-2			
SG JOB # 269-941989101			

REVDATE: