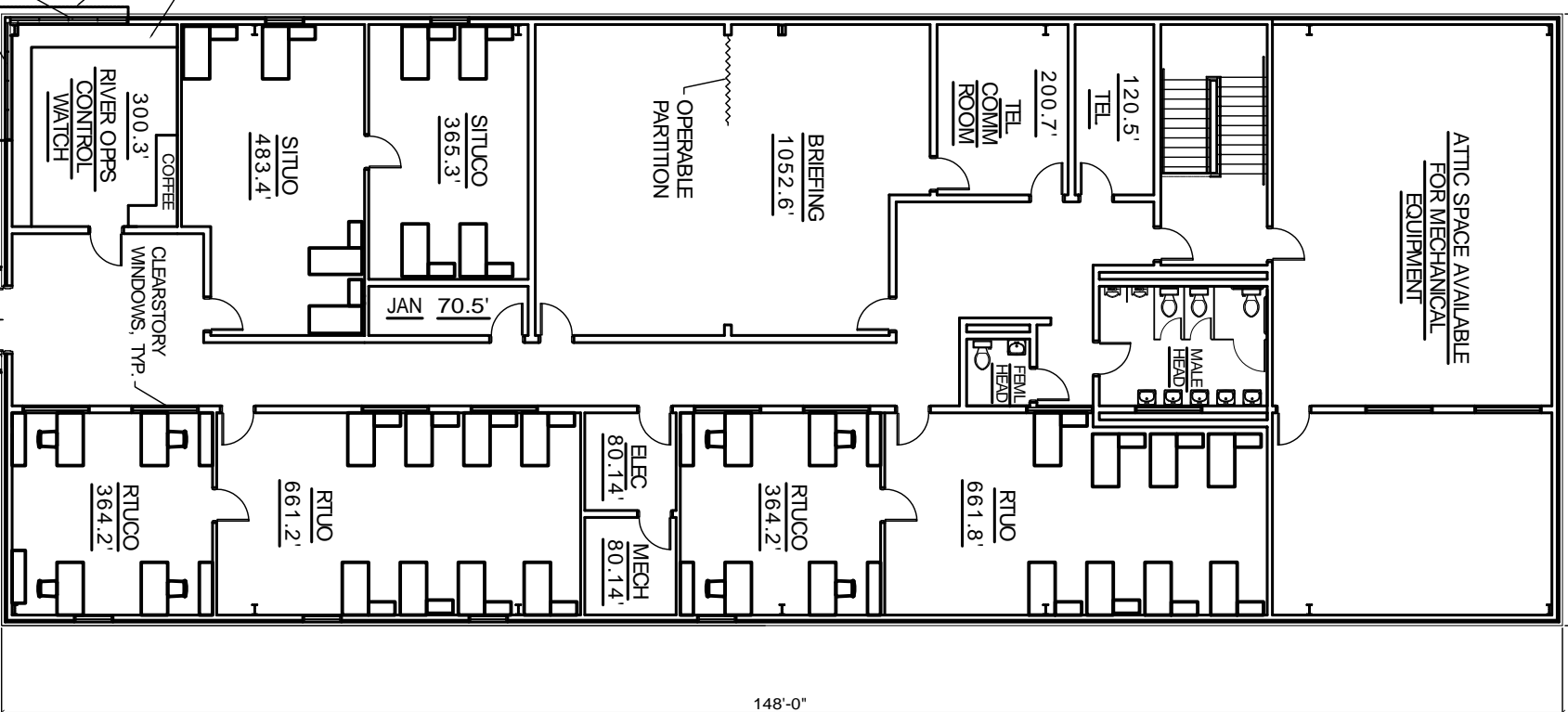


58'-0"

ATTIC SPACE AVAILABLE
FOR MECHANICAL
EQUIPMENT



6,918 SQ. FT.

11' EQ. WRAP AROUND WINDOW "B"

CONT. COUNTER
APPROX. LINE OF GLASS
LEANING OUT TO FASCIA

COFFEE
300.3'
RIVER OPS
CONTROL
WATCH

SITUO
483.4'

SITUO
365.3'

JAN
70.5'

BREEDING
1052.6'

TEL
120.5'

TEL
COMM
ROOM
200.7'

RTUO
661.8'

RTUO
364.2'

ELEC
80.14'

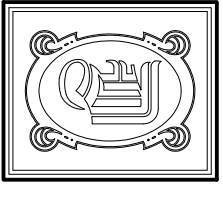
MECH
80.14'

RTUO
661.2'

RTUO
364.2'

148'-0"

OPERATIONS BUILDING 2440 SECOND FLOOR PLAN
SCALE: 1/8" = 1'-0"



DAMMON
ENGINEERING, INC

CHIEF ENGINEER
EMMETT
DAMMON, P.E.
CHIEF ARCHITECT
ROBERT
WILTSE

1095 FLORIDA AVENUE
SUDELL, LA. 70459
OFFICE: 985-649-5932
FAX: 985-641-5950

WEBSITE:
WWW.DAMMONENGINEERING.COM
EMAIL:
DAMMONENG@BELL SOUTH.NET

ARCHITECTURE
ENGINEERING
STUDIES
PLANNING
INVESTIGATION
EXPERT WITNESS

NEW RIVERINE
AND COMBATAN
CRAFT OPERATION
FACILITY

JOHN C. STENNIS
SPACE CENTER
MISSISSIPPI

OPERATIONS BLDG
BLDG 2440
SECOND FLOOR
PLAN

REV:

SCALE: AS NOTED

JOB#: 1986

DATE: 8-14-08

SHEET

A1.2

OF