

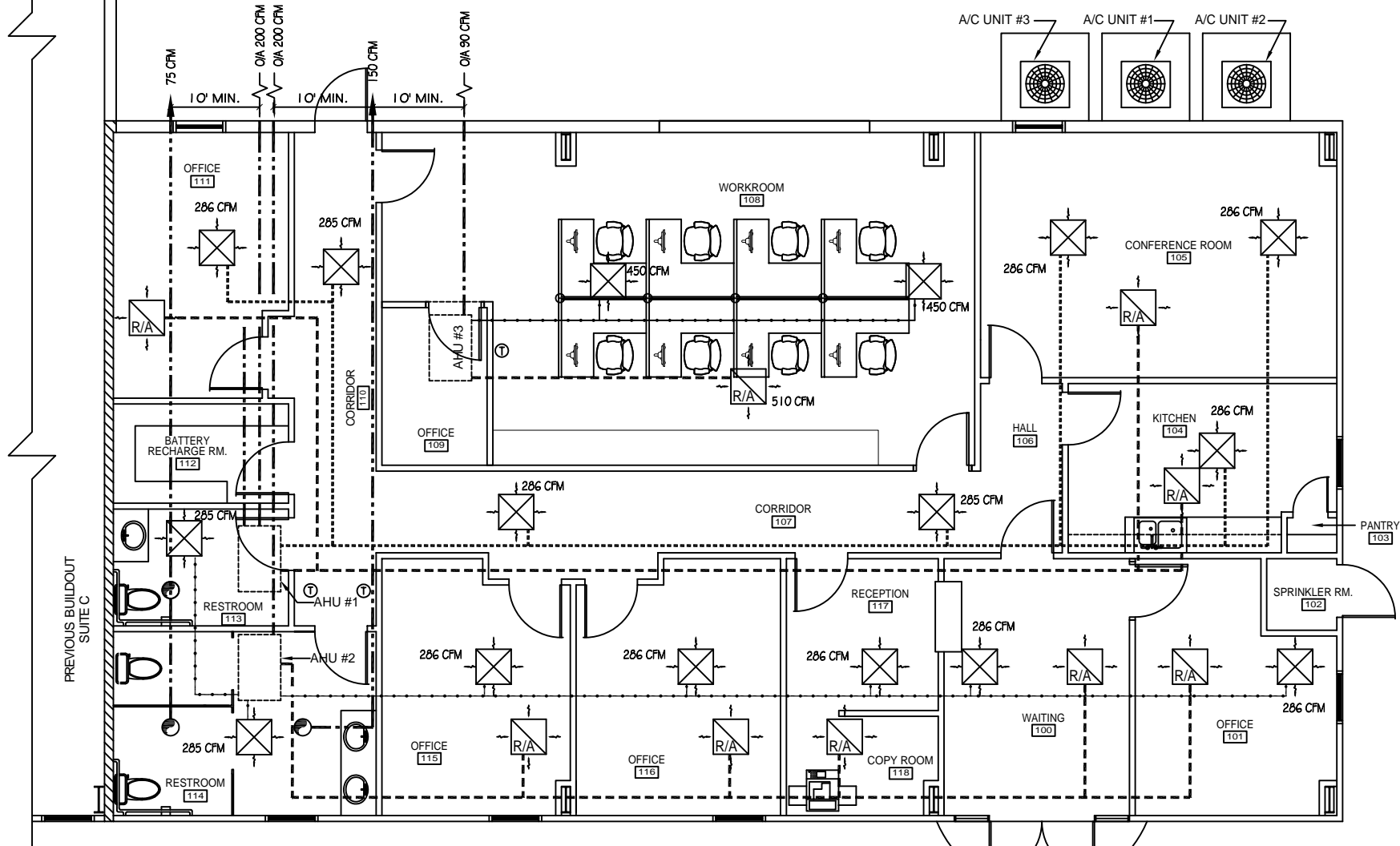
EXHAUST FAN SCHEDULE				
LOC	CFM	VOLTAGE	TYPE	MANF.
TOILETS	SEE DWG	120	VENT/LIGHT	-

A/C UNIT SCHEDULE								
NO.	TOTAL BTU	CFM	O.A.	HEAT (KW)	ELECTRICAL			COMMENTS
					VOLTAGE	MCA	CKT BRKR	
1	60,000 5 TON	2,000	200	20	208V,3Ø	-	MDP4-2,4,6	CARRIER
2	60,000 5 TON	2,000	200	20	208V,3Ø	-	MDP4-8,10,12	CARRIER
3	18,000 1 1/2 TON	900	90	15	208V,3Ø	-	MDP4-14,16,18	CARRIER

AIR BALANCE SCHEDULE					
	A/C-1	A/C-2	A/C-3	EF-1	EF-2
SUPPLY AIR FLOW (CFM)	7200	7200	900		
OUTSIDE AIR FLOW (CFM)	1520	2105	90		
RETURN AIR FLOW (CFM)	5680	5095	510		
EXHAUST AIR FLOW (CFM)				75	150
BUILDING PRESSURE (CFM)	+1520	+2105	+90	-75	-150
QUANTITIES	1	1	1	1	1
TOTAL PRESSURIZATIONS	+1520	+2105	+90	-75	-150
REMARKS					
RESULTING BUILDING PRESSURIZATION (CFM) =	+3490				

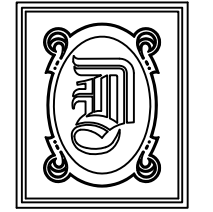
- ### MECHANICAL NOTES
1. CONCEALED DUCTWORK TO BE UL-181, CLASS 1, FIBERGLASS DUCTBOARD. DUCTS SHALL BE SIZED TO LIMIT MAIN DUCTS TO 1000 CFM & SECONDARY DUCTS TO 800 CFM. TO BE INSTALLED PER SMACNA STANDARDS.
 2. EXPOSED DUCTWORK TO BE GALVANIZED SHEET METAL PER SMACNA STANDARDS. LINE WITH NEOPRENE COATED 1.0," 1.5 POUNDS PER CUBIC FOOT DUCT INSULATION.
 3. ROUND FLEXIBLE DUCT TO BE UL-181, CLASS 1, AIR DUCT MATERIALS.
 4. DUCT SIZES SHOWN ARE CLEAR INSIDE DIMENSIONS.
 5. IN ALL SYSTEMS OVER 2000 CFM AND LESS THAN 15,000 CFM, SMOKE DETECTORS SHALL BE INSTALLED IN ACCORDANCE WITH NFPA 72E IN THE RETURN DUCT DOWNSTREAM OF THE AIR HANDLING UNIT AND ALL FILTERS TO AUTOMATICALLY STOP THE FAN.
 6. WHERE MULTIPLE AIR-HANDLING SYSTEMS SHARE COMMON SUPPLY OR RETURN AIR DUCTS OR PLENUMS WITH A COMBINED CAPACITY GREATER THAN 2000 CFM, THE RETURN AIR SYSTEM SHALL BE PROVIDED WITH SMOKE DETECTORS IN ACCORDANCE WITH IMC '06 SEC. 606.2.1.
 7. PROVIDE U.L. RATED FIRE DAMPERS WHERE REQUIRED AT ALL DUCT PENETRATIONS OF FIRE-RATED ASSEMBLIES AND WHERE REQUIRED BY CODE, INCLUDING OUTSIDE AIR INTAKES.
 8. CONDENSATE DRAINS TO BE PVC PIPE RUN TO PLUMBERS P-TRAP WITHIN FIVE FEET OF AIR HANDLING UNITS.
 9. ALL AIR HANDLING SYSTEMS TO BE BALANCED TO ASSURE PROPER AIR FLOWS PER PLANS.
 10. ALL THERMOSTATS TO BE AUTOMATIC CHANGEOVER WITH HEAT SWITCH.
 11. EXHAUST FAN EQUAL TO BROAN MODEL NO. 100 CF. OR EQUAL. FAN SHALL BE CONTROLLED BY A SWITCH ON THE WALL IN THE SAME LOCATION AS LIGHT SWITCH(S). PROVIDE BACK DRAFT DAMPER.
 12. PROVIDE AND INSTALL WATER PROOF GRILLE VENT IN PROPER ROOF LOCATION FOR PLUMBING FIXTURE EXHAUST.
 13. ALL SUPPLY AIR VENTS SHALL BE EQUIPPED WITH AIR CONTROL DAMPERS.
 14. LOCATE OUTDOOR UNITS AS SHOWN ON ARCH. DWGS.
 15. REFRIGERANT LINES SHALL BE SIZED BY UNIT MANUFACTURER AND INSTALLED ACCORDING TO MANUFACTURERS' INSTRUCTIONS.
 16. FRESH AIR SHALL BE SUPPLIED TO EACH AIR HANDLER THROUGH EXTERIOR WALL DUCT SUPPLIED WITH A CONTROL DAMPER.
 17. ALL ELECTRICAL, MECHANICAL, AND PLUMBING PENETRATING FIRE WALLS SHALL BE FIRE CAULKED. (PENETRATIONS THROUGH RATED CONSTRUCTION SHALL BE SEALED WITH A MATERIAL CAPABLE OF PREVENTING THE PASSAGE OF FLAMES AND HOT GASES WHEN TESTED IN ACCORDANCE WITH ASTM-E8-14).
 18. MECHANICAL PLANS ARE DRAWN SCHEMATICALLY. CONTRACTOR TO ROUTE DUCT SYSTEMS PER FIELD CONDITIONS.
 19. AREA OF REFUGE SHALL BE DESIGNED IN ACCORDANCE WITH NFPA 92A. TO INCLUDE STAIRWELL PRESSURIZATION SYSTEMS. PROVIDE PROPER ACTIVATION AND CONTROL SYSTEMS.
 20. PROVIDE POWER SUPPLY AND MAX. OVERCURRENT DEVICE PER MANUFACTURERS SPECIFICATION FOR ALL UNITS.

- ### CONTRACTOR NOTES
1. PROVIDE ELEC. DISCONNECT, MAINTENANCE OUTLET, AND LIGHT AT EACH AIR HANDLER LOCATION.
 2. INSTALL ALL MECHANICAL EQUIPMENT PER MANUFACTURER REQUIREMENTS.
 3. INSTALL ALL DUCT WORK ABOVE CEILING AS SHOWN, MAKE ADJUSTMENTS PER FIELD REQUIREMENTS.
 4. PROVIDE ONE OUTDOOR SERVICE OUTLET WITHIN 10' OF EACH CONDENSER UNIT.
 5. COORDINATE MECHANICAL PLANS WITH ARCHITECTURAL, ELECTRICAL, AND PLUMBING PLANS.



- ### LEGEND
- SUPPLY AIR GRILLE
 - RETURN AIR GRILLE
 - A/C UNIT
 - EXHAUST FAN
 - THERMOSTAT
 - AHU #1 SUPPLY
 - AHU #2 & 3 SUPPLY
 - OUTSIDE AIR
 - RETURN AIR

MECHANICAL PLAN - SUITE D
SCALE: 1/4"=1'



DAMMON
ENGINEERING, INC.

CHIEF ENGINEER
EMMETT
DAMMON, P.E.

CHIEF ARCHITECT
ROBERT
WILTSE

1095 FLORIDA AVENUE
SLIDELL, LA. 70458
OFFICE: 985-649-5832
FAX: 985-641-5950

WEBSITE:
WWW.DAMMONENGINEERING.COM

EMAIL:
DAMMONENG@BELLSOUTH.NET

- ARCHITECTURE
- ENGINEERING
- STUDIES
- PLANNING
- INVESTIGATION
- EXPERT WITNESS

SOUTHEAST
LOUISIANA
VETERAN'S
HEALTH CARE
SYSTEM

SUITE D
MECHANICAL
HVAC
PLAN

REV:
SCALE: AS NOTED
JOB#: 2012
DATE: 03-11-09
SHEET 6

M-1