

**DAMMON  
ENGINEERING, INC.**

CHIEF ENGINEER  
EMMETT  
DAMMON, P.E.

CHIEF ARCHITECT  
ROBERT  
WILTSE

1095 FLORIDA AVENUE  
SLIDELL, LA. 70458  
OFFICE: 985-649-5832  
FAX: 985-641-5950

WEBSITE:  
WWW.DAMMONENGINEERING.COM

EMAIL:  
DAMMONENG@BELLSOUTH.NET

ARCHITECTURE

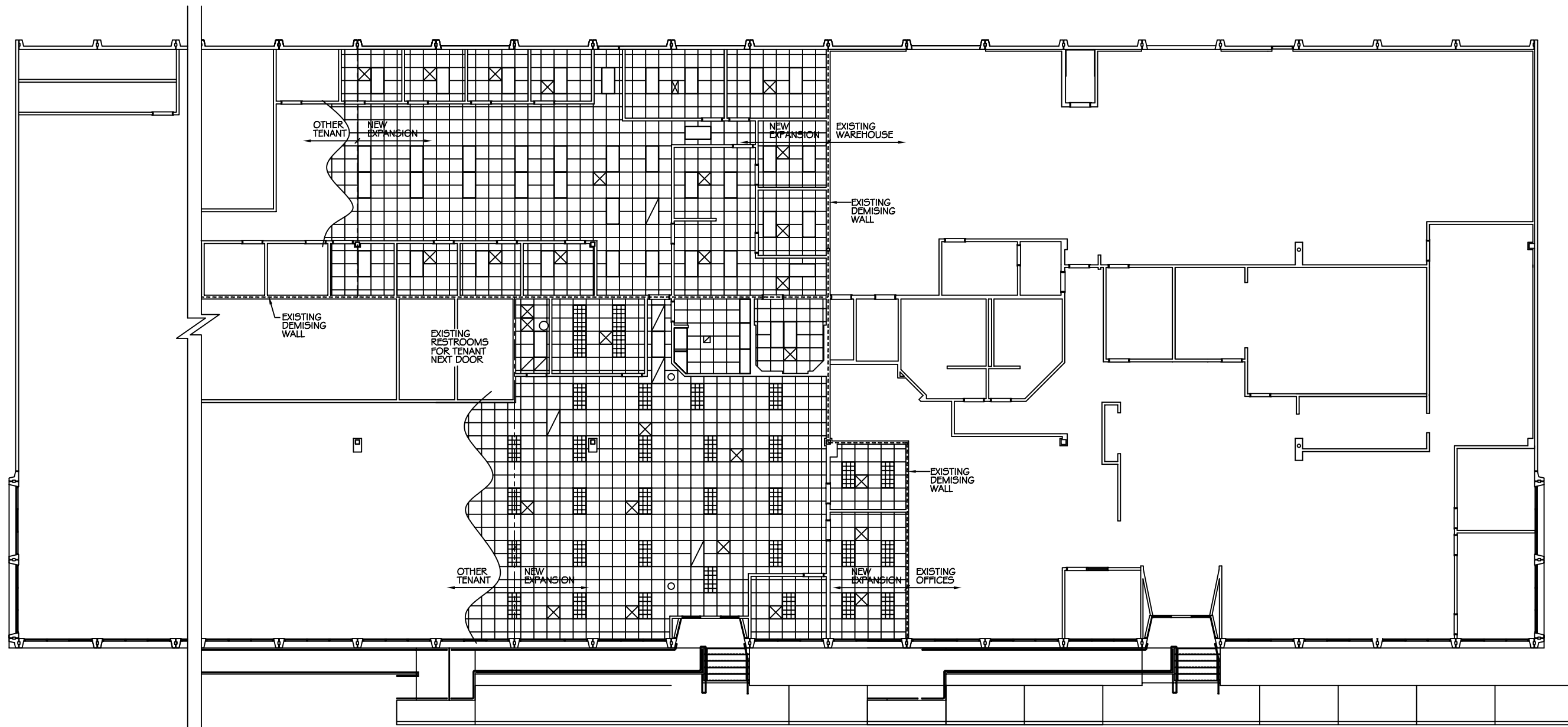
ENGINEERING

STUDIES

PLANNING

INVESTIGATION

EXPERT WITNESS



**EXISTING REFLECTED CEILING PLAN**

SCALE: 1/8" = 1'-0"

PATTERSON  
DENTAL  
OFFICE  
RENOVATION

EXISTING  
REFLECTED  
CEILING  
PLAN

REV:

SCALE: AS NOTED

JOB#: 2076

DATE: 08-18-10

SHEET

**X-2**

PRELIMINARY (NOT FOR CONSTRUCTION)

OF