

DAMMON
ENGINEERING, INC.

CHIEF ENGINEER
EMMETT
DAMMON, P.E.
CHIEF ARCHITECT
ROBERT
WILTSE

1095 FLORIDA AVENUE
SLIDELL, LA, 70436
OFFICE: 985-643-5532
FAX: 985-641-5950

WEBSITE:
WWW.DAMMONENGINEERING.COM
EMAIL:
DAMMONING@DEL5OUT.NET

ARCHITECTURE
ENGINEERING
STUDIES
PLANNING
INVESTIGATION
EXPERT WITNESS

LA QUINTA
INNS
AND
SUITES

DR.
EDUARDO
HERNANDEZ
U. S. HWY. 51
(S. W. RAILROAD AVE.
HAMMOND, LA

FOUNDATION
PLAN

REV: 01-11-10
SCALE: AS NOTED
JOB#: 1838
DATE: 03-06-08
SHEET

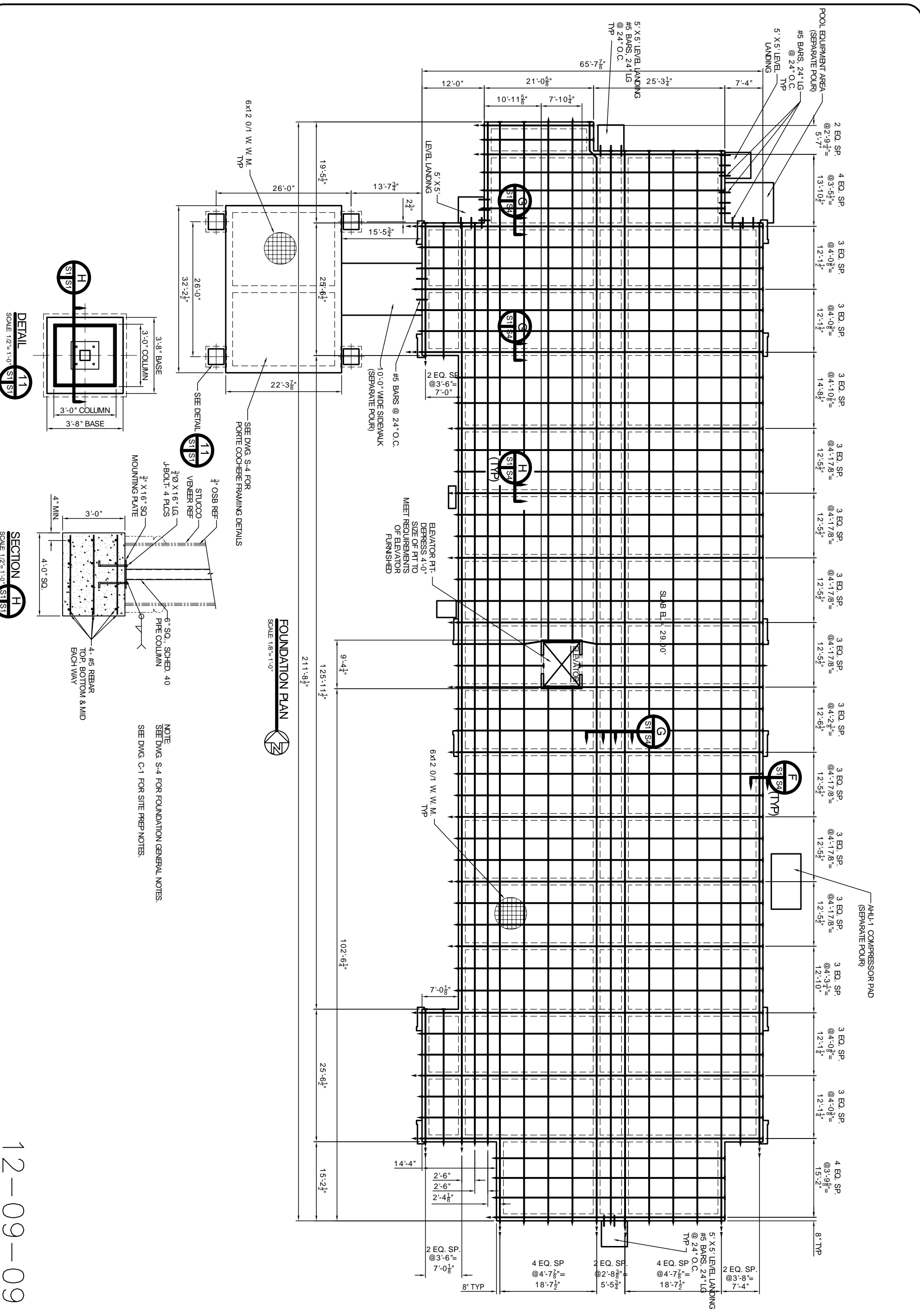
OF
S-1

12-09-09

DETAIL 11
SCALE 1/2" = 1'-0"

SECTION H
SCALE 1/2" = 1'-0"

FOUNDATION PLAN
SCALE 1/8" = 1'-0"



NOTE:
SEE DWG. S-4 FOR FOUNDATION GENERAL NOTES.
SEE DWG. C-1 FOR SITE PREP NOTES.