

DAMMON
ENGINEERING, INC.

CHIEF ENGINEER
EMMETT
DAMMON, P.E.
CHIEF ARCHITECT
ROBERT
WILTSE

1095 FLORIDA AVENUE
SLIDELL, LA, 70458
OFFICE: 985-649-5632
FAX: 985-641-5950

WEBSITE:
WWW.DAMMONENGINEERING.COM
EMAIL:
DAMMONENG@BELL.SOUTH.NET

ARCHITECTURE
ENGINEERING
STUDIES
PLANNING
INVESTIGATION

EXPERT WITNESS

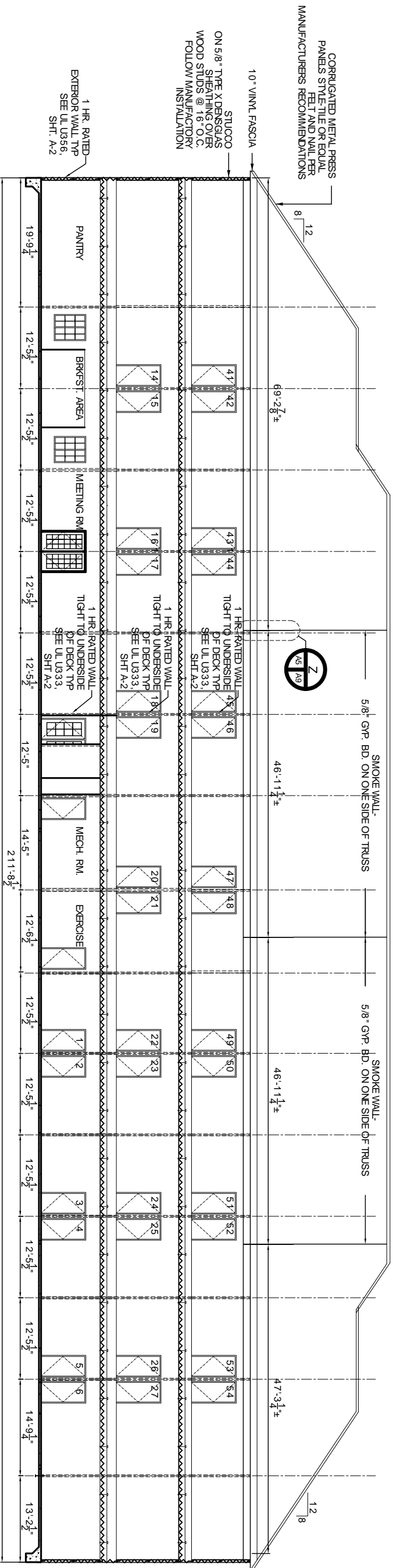
LA QUINTA
INNS
AND
SUITES

DR.
EDUARDO
HERNANDEZ
U. S. HWY. 51
S. W. RAILROAD AVE
HAMMOND, LA

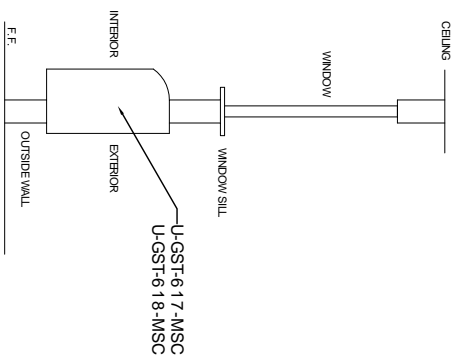
LONGITUDINAL
SECTION

REV:	
SCALE:	AS NOTED
JOB#:	1838
DATE:	03-06-08
SHEET	

OF
A-5



LONGITUDINAL SECTION **J**
SCALE 1/8" = 1'-0"



NOTE: ALL DIMENSIONS SHALL BE
VERIFIED BY GENERAL CONTRACTOR
AC & WINDOW ELEVATION
NTS

12-09-09