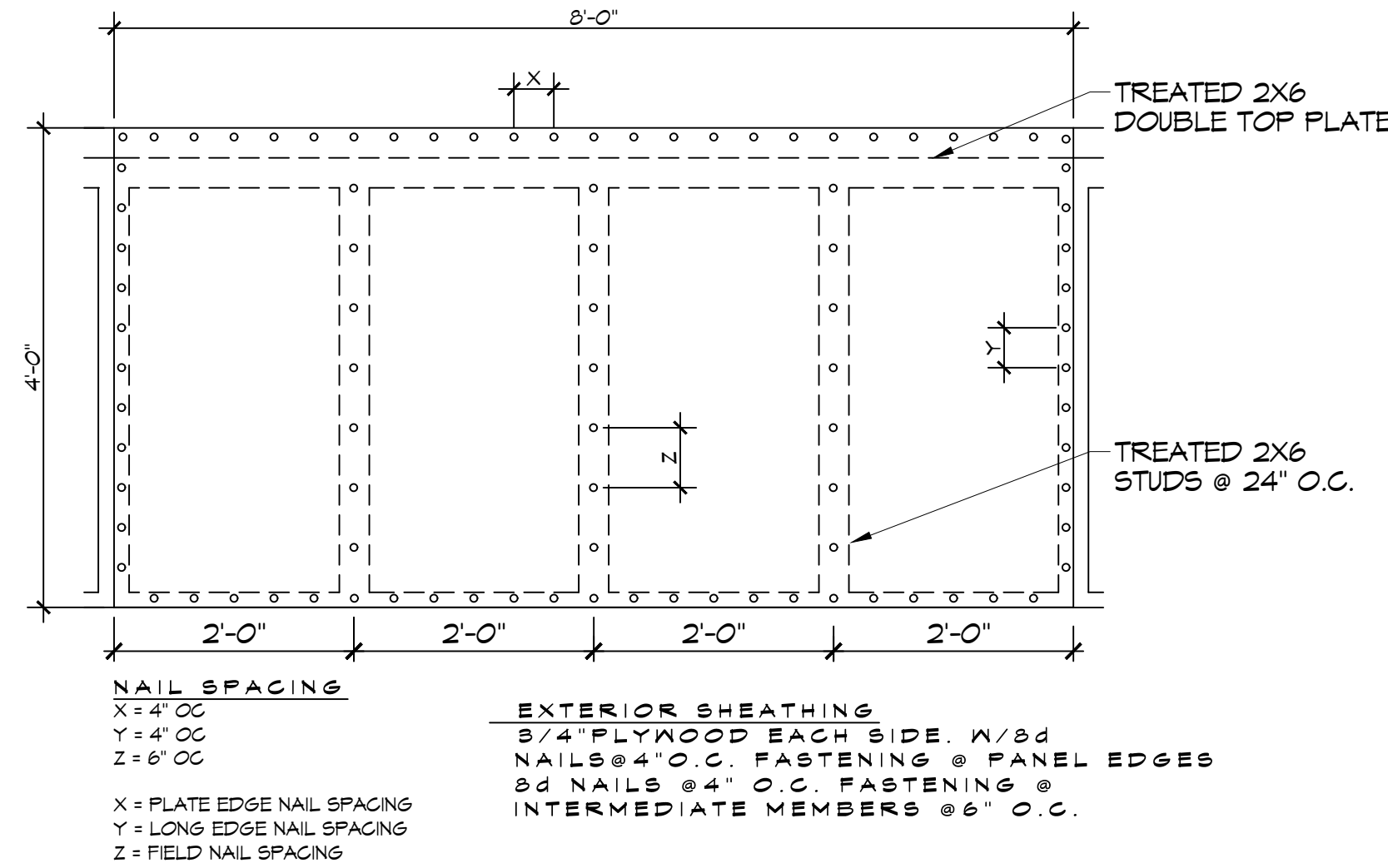


9 PLAN VIEW WALL ACCENT
SCALE: 1/2" = 1'-0"



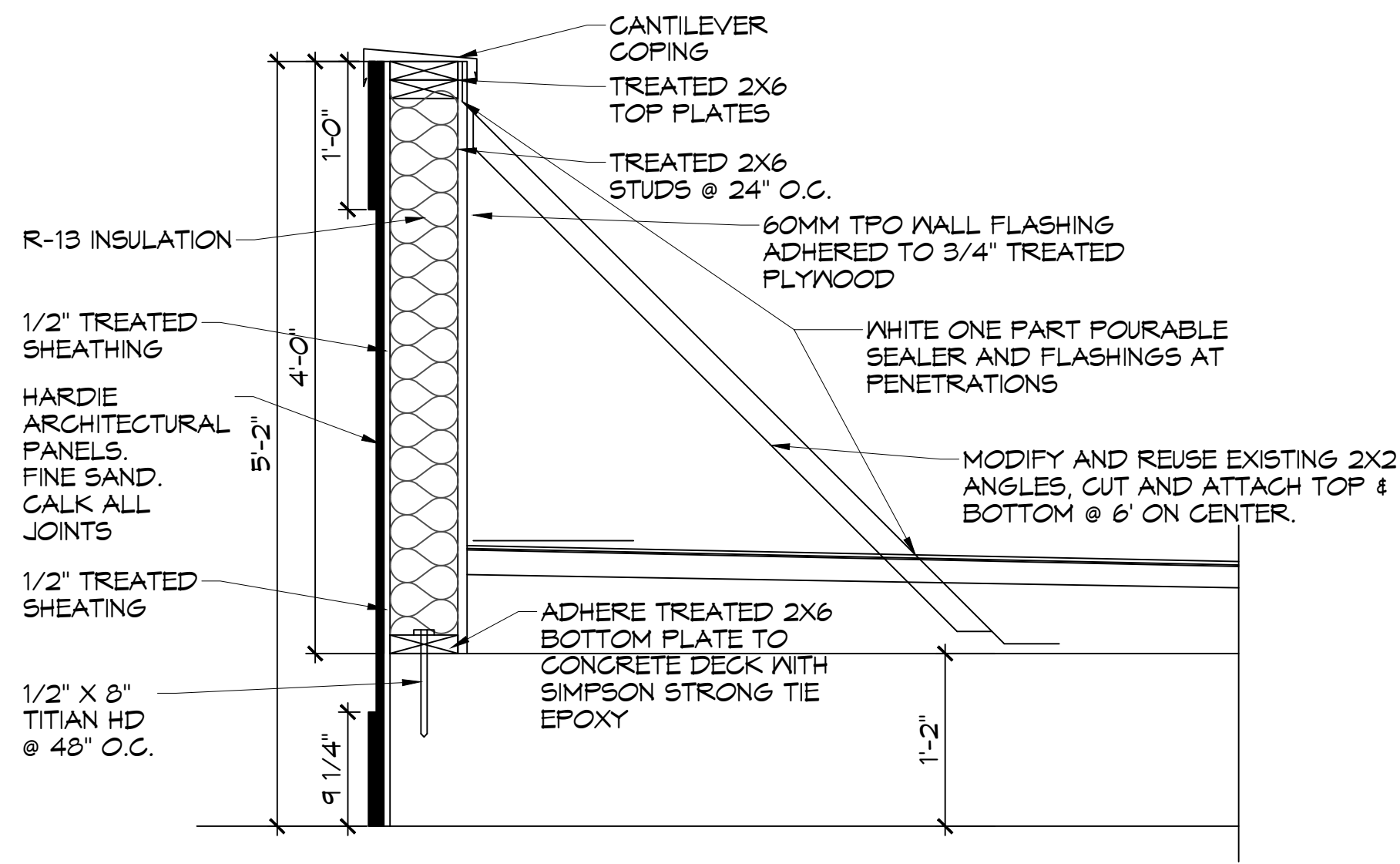
10 PARAPET SHEATHING NAILING PATTERN
SCALE: 3/4" = 1'-0"

INSTALLATION ON METAL DECK OVER DROP OFF AND LOBBY

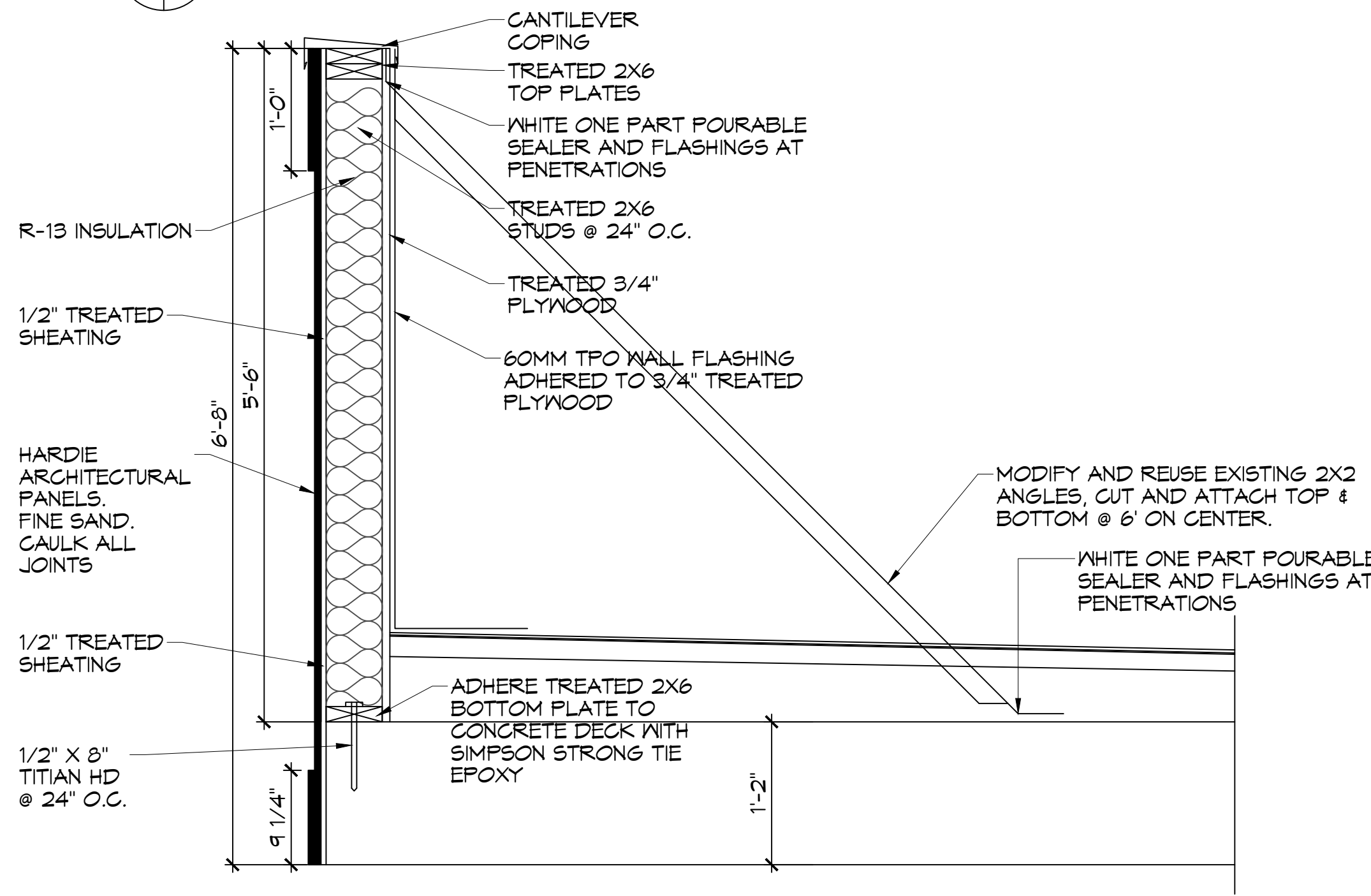
1. LOOSE LAY A 2"X48"X96" ISO95+GL INSULATION BOARD ON THE METAL DECK.
2. MECHANICALLY ATTACH A 2" X48"X96" ISO95+GL INSULATION BOARD THROUGH THE FIRST LAYER OF ISO TO THE METAL DECK. PER THE 48"X96" BOARD; THE ATTACHMENT RATE TO BE 20 HEAVY DUTY FASTENERS AND PLATES IN THE FIELD; 32 IN THE PERIMETERS AND CORNERS.
3. ADHERE A 1/8" X48"X48" TAPERED ISO95+GL INSULATION BOARD TO THE SECOND LAYER OF ISO WITH ISO SPRAY R LOW-RISE FOAM ADHESIVE. ADHESIVE RATE TO BE 4" O.C. EVERYWHERE.
4. ADHERE A 1/2" X48"X48" SECUROCK GYPSUM FIBER COVERBOARD BOARD TO THE SECOND LAYER OF ISO WITH ISO SPRAY R LOW-RISE FOAM ADHESIVE. ADHESIVE RATE TO BE 4" O.C. EVERYWHERE.
5. ADHERE A 60 MIL ULTRAPLY TPO MEMBRANE TO THE COVERBOARD WITH LVOC ULTRAPLY BONDING ADHESIVE.
6. PROVIDE RETROFIT KITS IN THE EXISTING DRAIN BOWLS.
7. TERMINATE ROOF MEMBRANE AT WALL AND SECURE TO WALL AT 12" O.C.
8. ADHERE A 60 MIL ULTRAPLY TPO MEMBRANE TO THE 3/4" PLYWOOD AT PARAPETS WITH ULTRAPLY BONDING ADHESIVE. ENSURE MEMBRANE GOES UP AND OVER PARAPET AND DOWN OUTSIDE FACE OF WALL.
9. INSTALL ELEVATES CANTILEVER COPING ON TOP OF PARAPET TO COMPLETE THE INSTALLATION.

INSTALLATION ON CONCRETE DECK

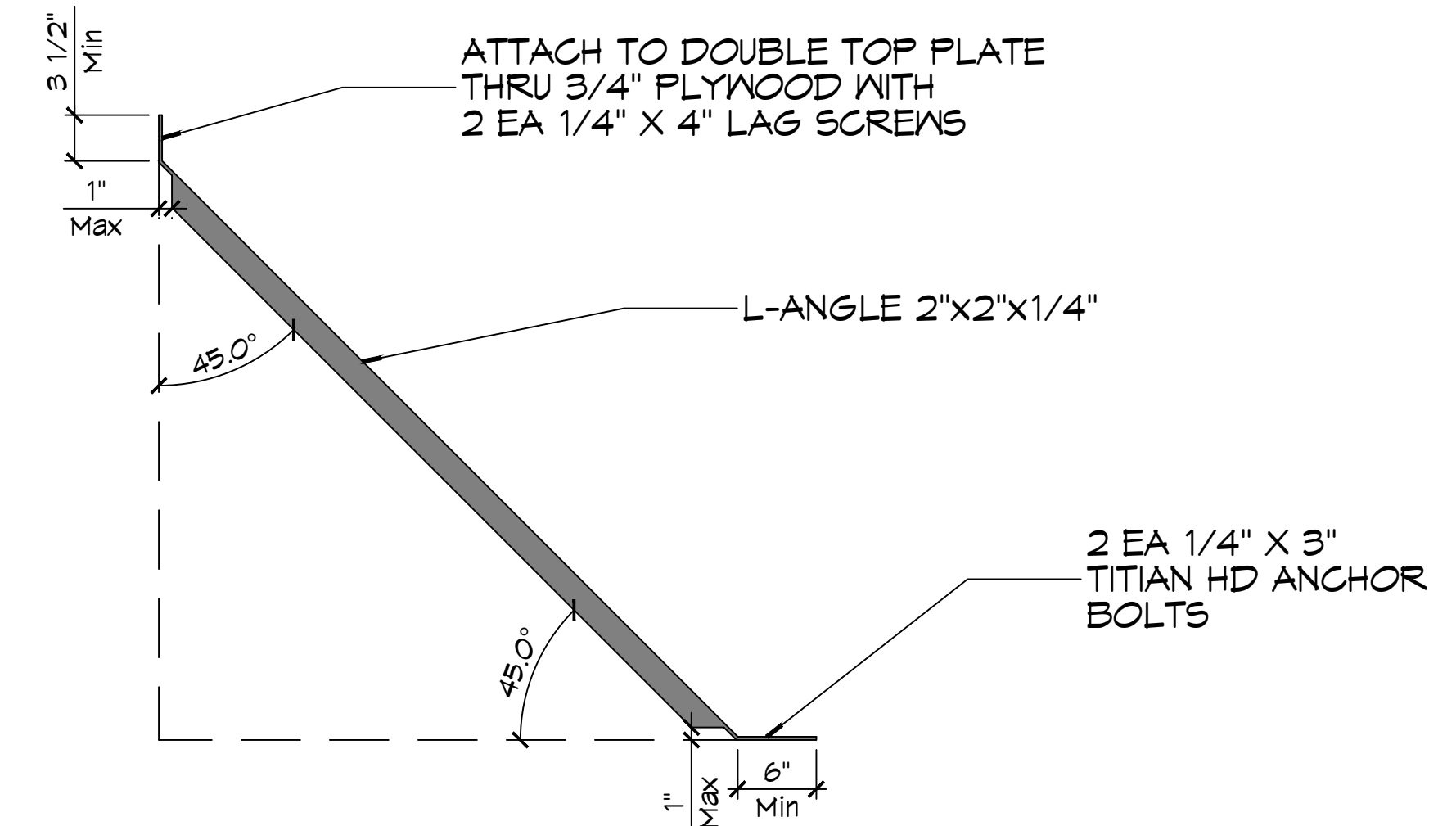
1. SCRAPE AND CLEAN OFF STRUCTURAL CONCRETE DECK.
2. ADHERE A 2"X48"X96" ISO95+GL INSULATION BOARD TO THE STRUCTURAL CONCRETE DECK WITH ISO SPRAY R LOW-RISE FOAM ADHESIVE. ADHESIVE RATE TO BE 4" O.C. EVERYWHERE.
3. ADHERE A 2" X48"X96" ISO95+GL INSULATION BOARD TO THE FIRST LAYER OF ISO WITH ISO SPRAY R LOW-RISE FOAM ADHESIVE. ADHESIVE RATE TO BE 4" O.C. EVERYWHERE.
4. ADHERE A 1/8" X48"X48" TAPERED ISO95+GL INSULATION BOARD TO THE SECOND LAYER OF ISO WITH ISO SPRAY R LOW-RISE FOAM ADHESIVE. ADHESIVE RATE TO BE 4" O.C. EVERYWHERE.
5. ADHERE A 1/2" X48"X48" SECUROCK GYPSUM FIBER COVERBOARD BOARD TO THE SECOND LAYER OF ISO WITH ISO SPRAY R LOW-RISE FOAM ADHESIVE. ADHESIVE RATE TO BE 4" O.C. EVERYWHERE.
6. ADHERE A 60 MIL ULTRAPLY TPO MEMBRANE TO THE COVERBOARD WITH LVOC ULTRAPLY BONDING ADHESIVE.
7. PROVIDE RETROFIT KITS IN THE EXISTING DRAIN BOWLS.
8. TERMINATE ROOF MEMBRANE AT WALL AND SECURE TO WALL AT 12" O.C.
9. ADHERE A 60 MIL ULTRAPLY TPO MEMBRANE TO THE 3/4" PLYWOOD AT PARAPETS WITH ULTRAPLY BONDING ADHESIVE. ENSURE MEMBRANE GOES UP AND OVER PARAPET AND DOWN OUTSIDE FACE OF WALL.
10. INSTALL ELEVATES CANTILEVER COPING ON TOP OF PARAPET TO COMPLETE THE INSTALLATION.



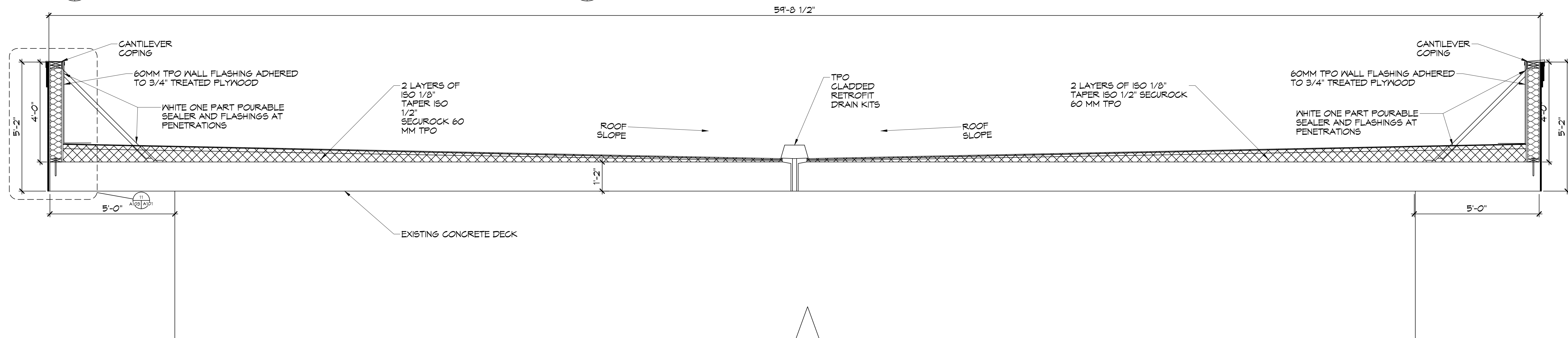
11 PARAPET WALL SECTION
SCALE: 1" = 1'-0"



12 PARAPET WALL ACCENT
SCALE: 1" = 1'-0"



13 PARAPET SUPPORT
SCALE: 1" = 1'-0"



14 ROOF SECTION
SCALE: 1/2" = 1'-0"

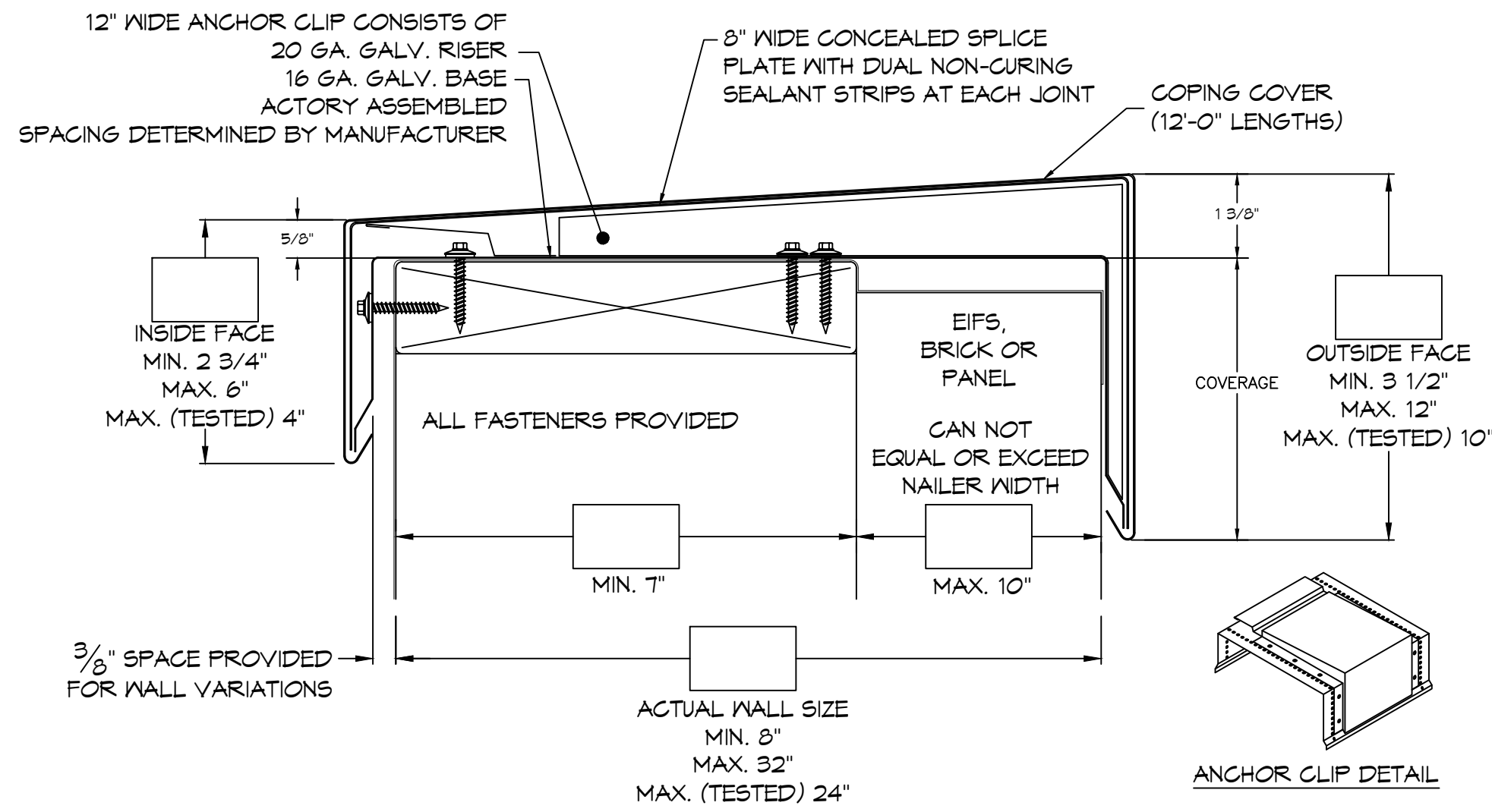
DAMMON ENGINEERING, INC.
LOUISIANA & MISSISSIPPI
Chief Engineer: Brian W. Hatch, PE
554 Old Spanish Trail
Slidell, LA 70468
www.dammoneengineering.com
info@dammoneengineering.com
PH: 985.649.9532

#	DESCRIPTION	DATE
1	Revised Millwork and Counter Tops	8/1/2022

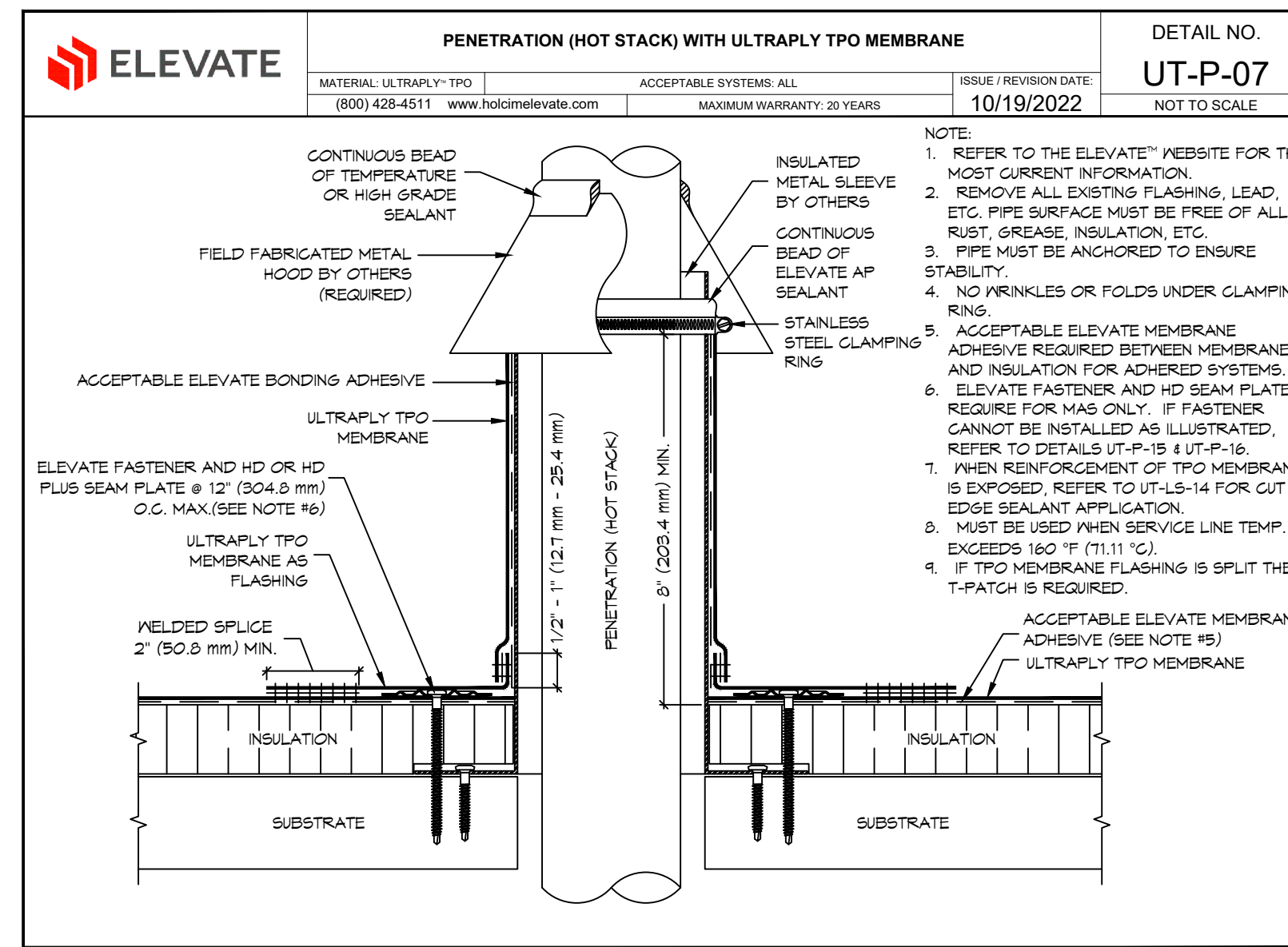
REVISIONS

NEW PARTIAL RENOVATION
RED ROOF INN
1662 GAUGE BLVD.
SLIDELL, LA 70459
JOB No: 2481 | DATE: 10-30-2025
DRAWN BY: BAW
CHECKED BY: C&D

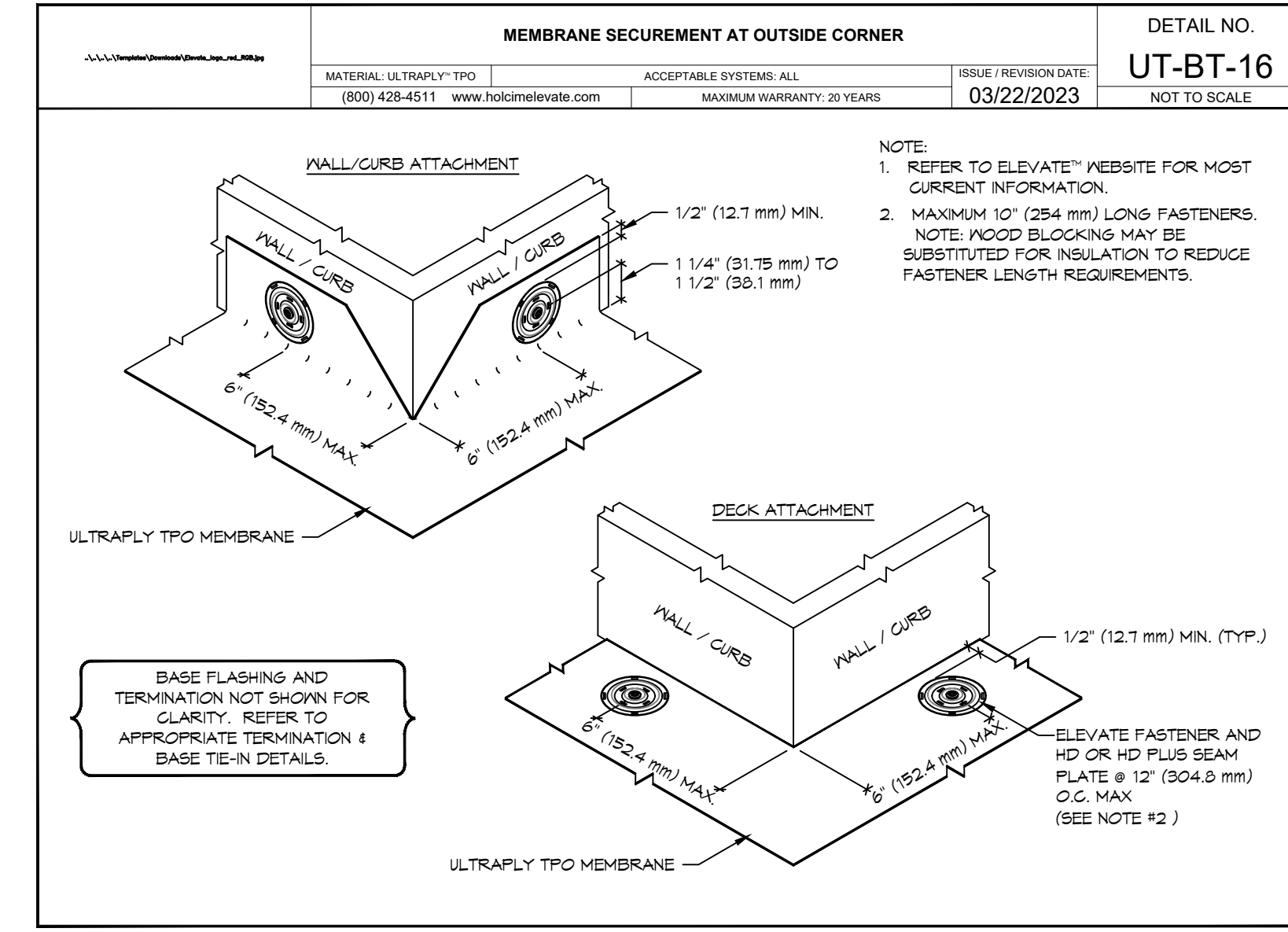
SHEET TITLE:
ROOF SECTION AND PARAPET WALL SECTION
DRAWING NUMBER:
A103
SHEET No: 5 of 10



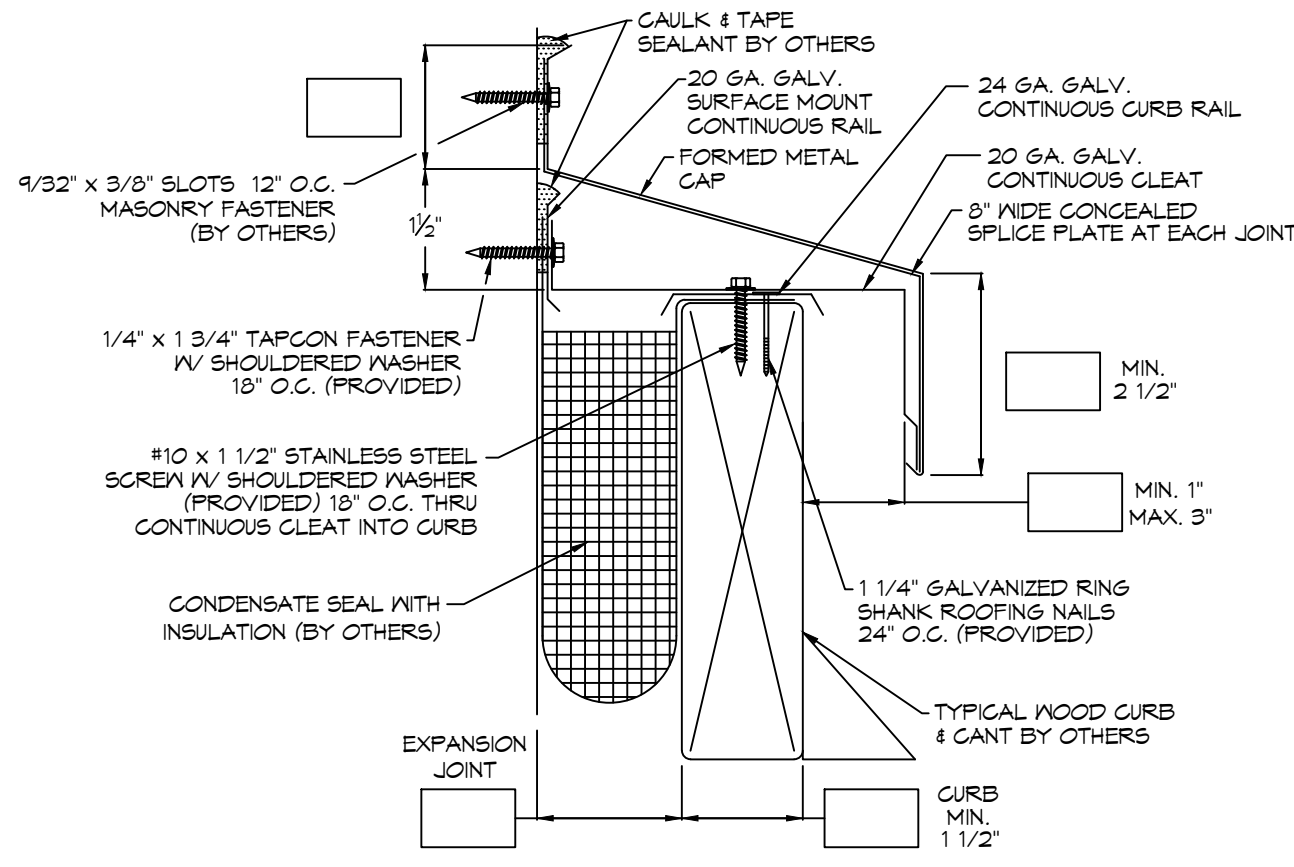
15 ANCHOR CLIP DETAIL
SCALE: N.T.S.



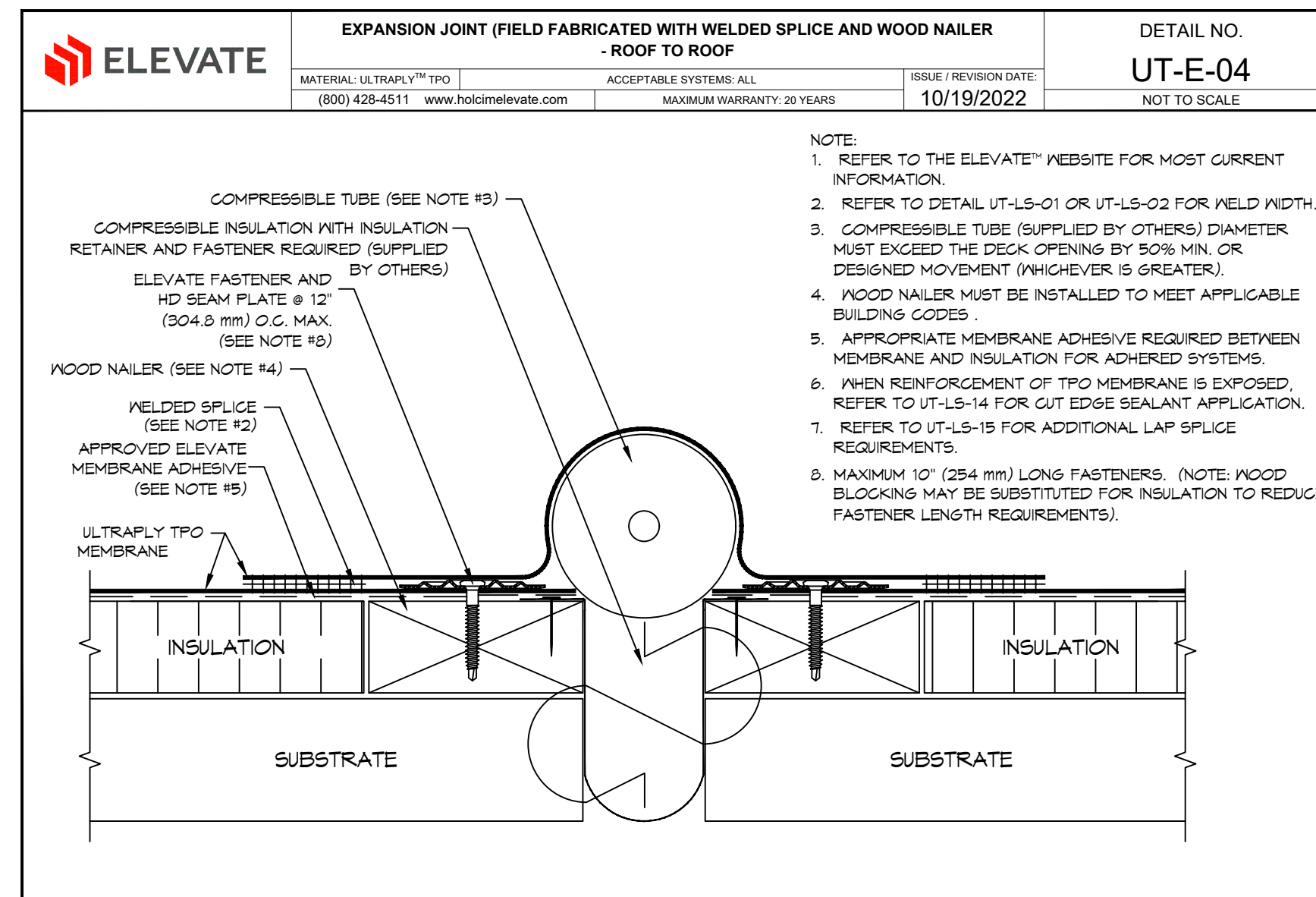
16 HOT STACK DETAIL
SCALE: N.T.S.



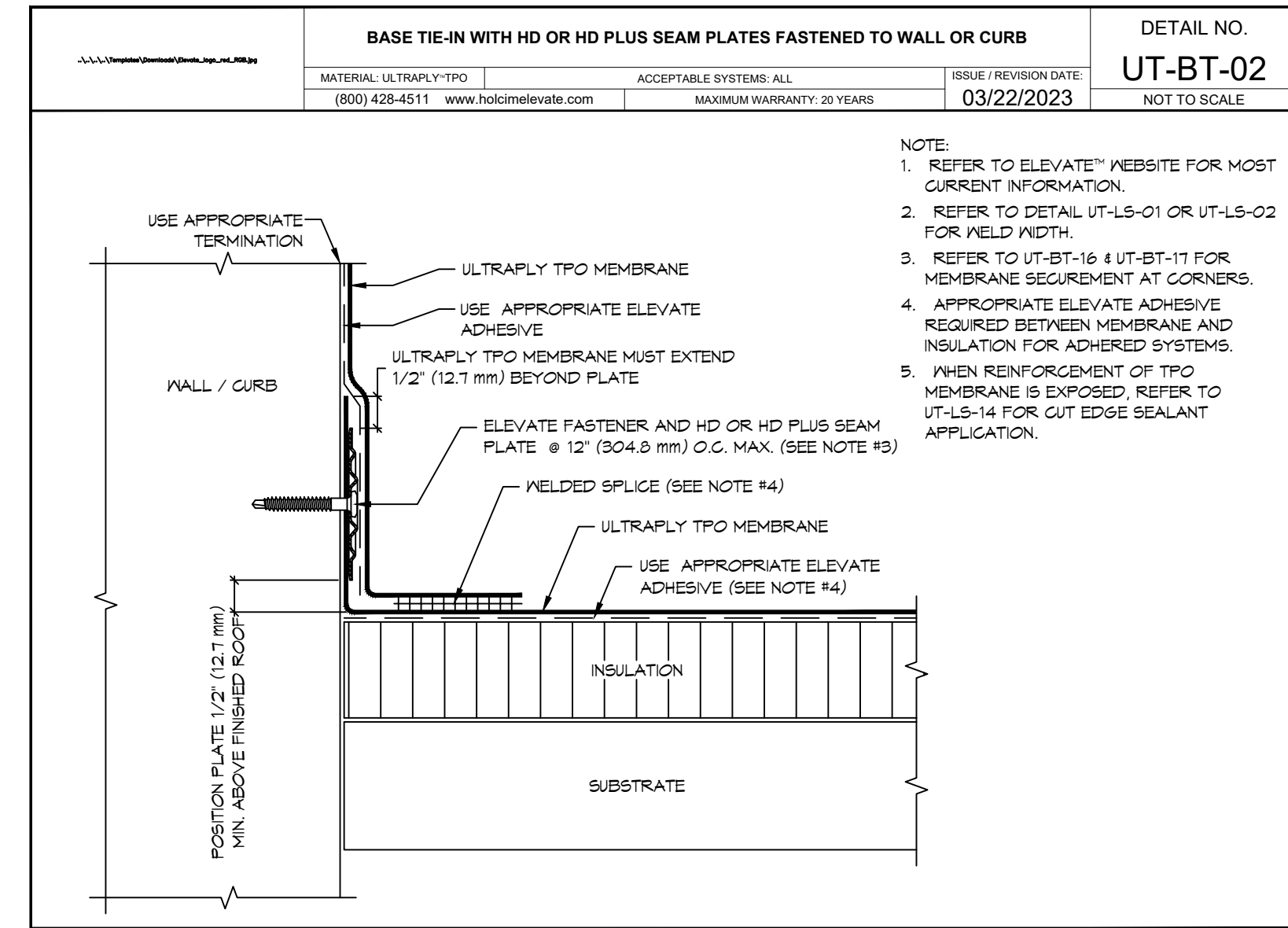
17 MEMBRANE DETAIL
SCALE: N.T.S.



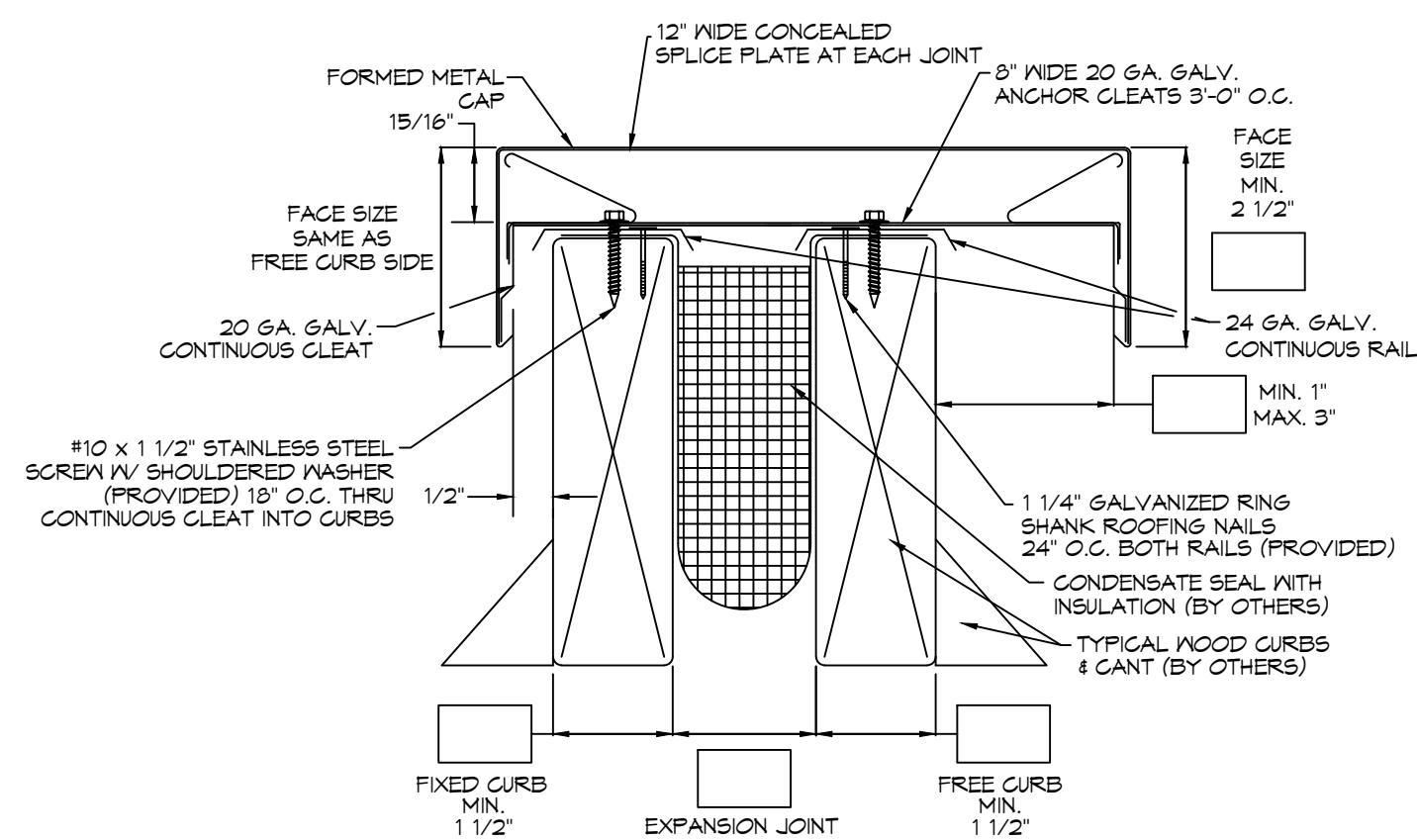
18 ROOF CAP DETAIL
SCALE: N.T.S.



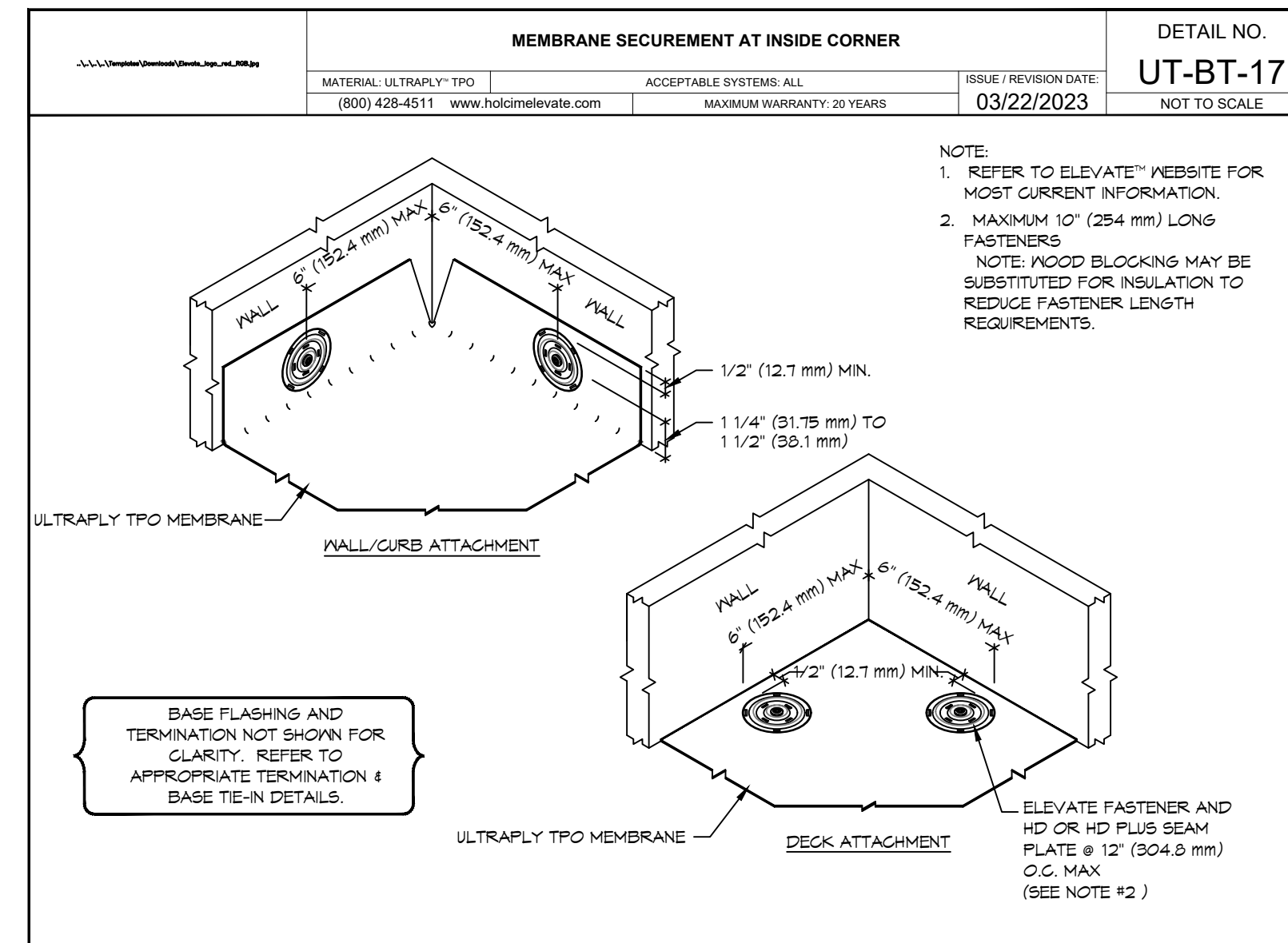
19 EXPANSION JOINT DETAIL
SCALE: N.T.S.



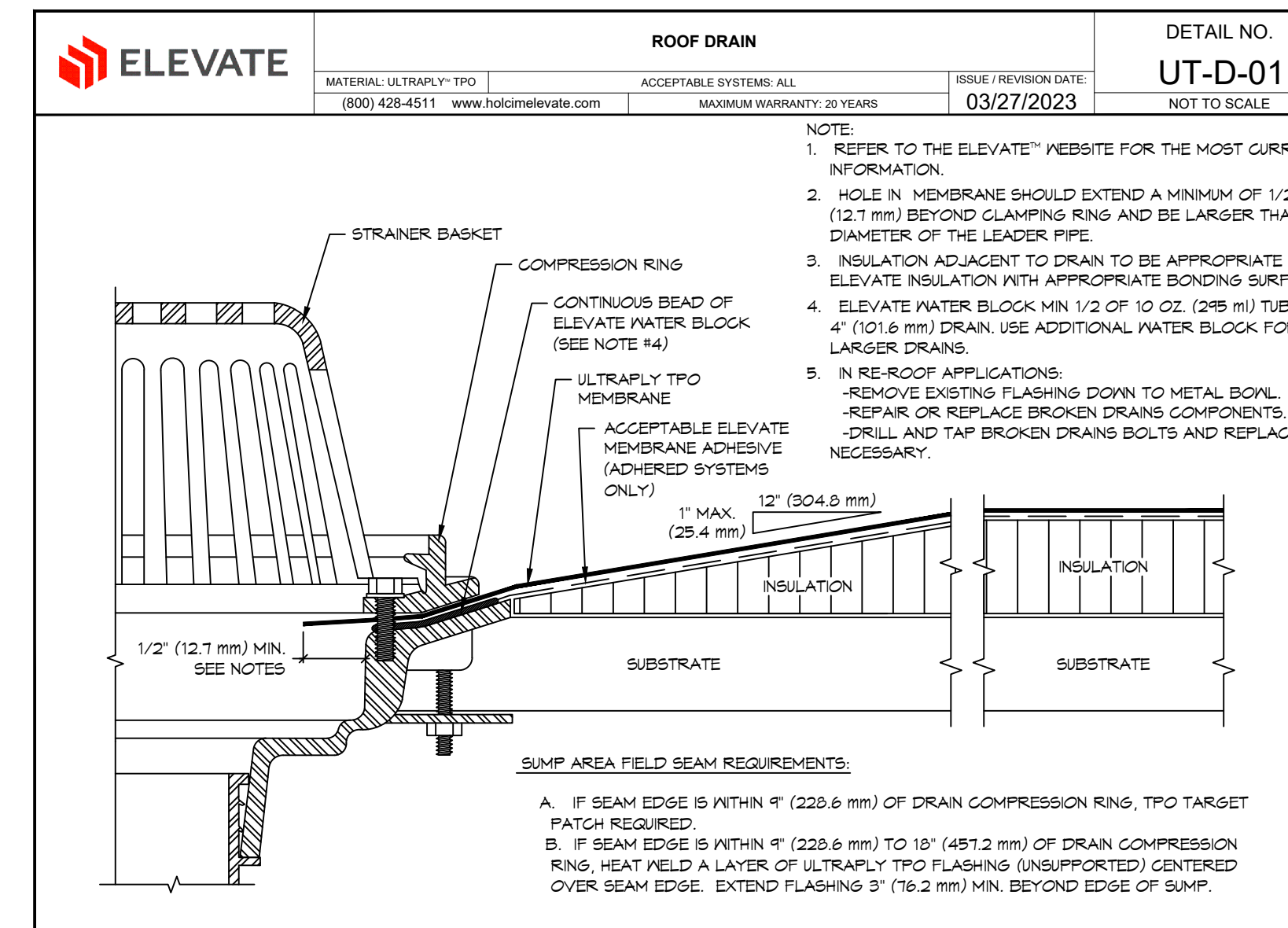
20 BASE TIE-IN DETAIL
SCALE: N.T.S.



21 ROOF CAP DETAIL
SCALE: N.T.S.



22 MEMBRANE DETAIL
SCALE: N.T.S.



23 ROOF DRAIN
SCALE: N.T.S.

DAMMON ENGINEERING, INC.
LOUISIANA & MISSISSIPPI
Chief Engineer: Brian Hirsch, PE
554 Old Spanish Trail
Shreveport, LA 71498
www.dammonengineering.com
info@dammonengineering.com
PH: 985.649.4832

REVISIONS	DATE	DESCRIPTION

SEAL: _____

NEW PARTIAL RENOVATION
RED ROOF IN

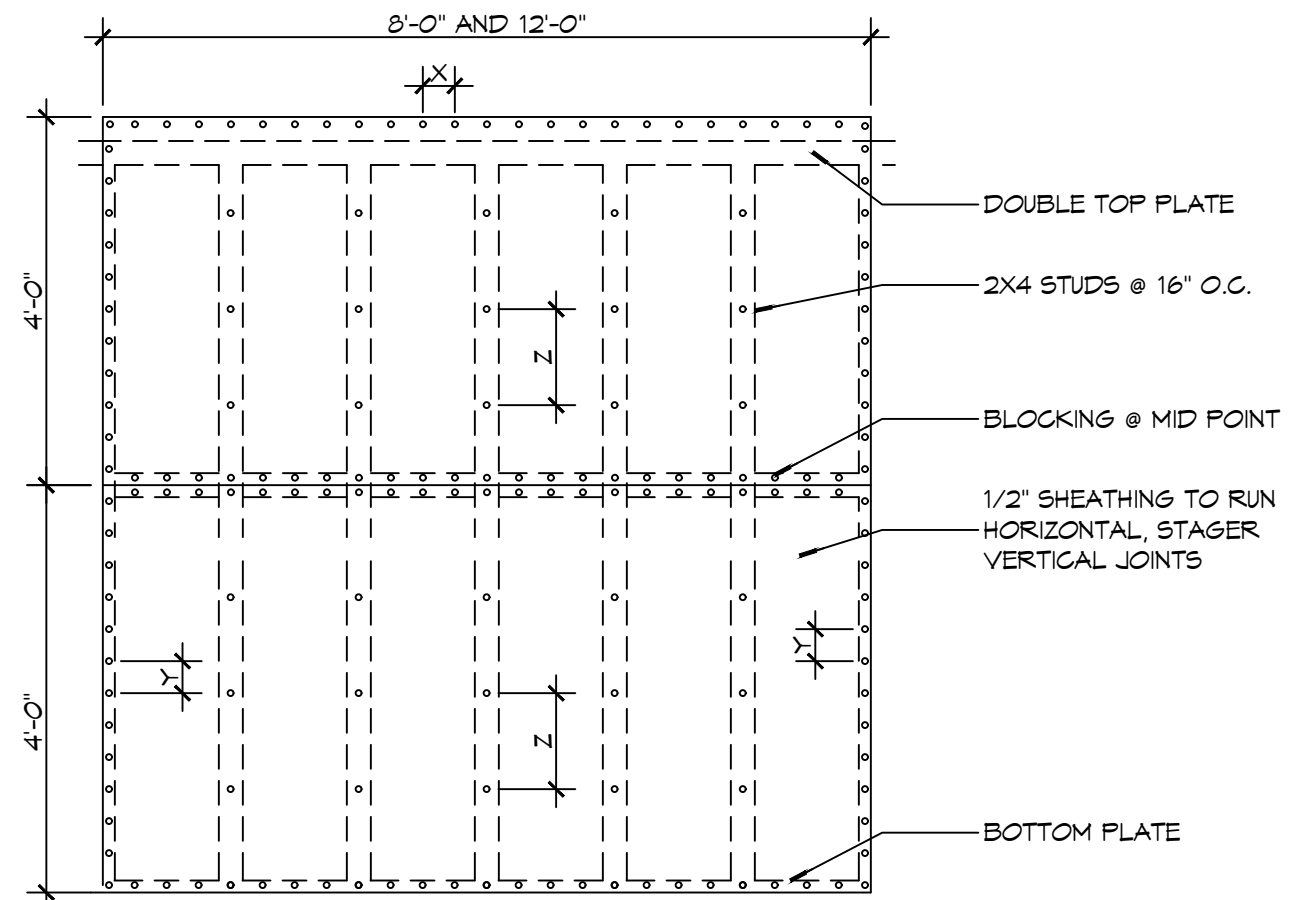
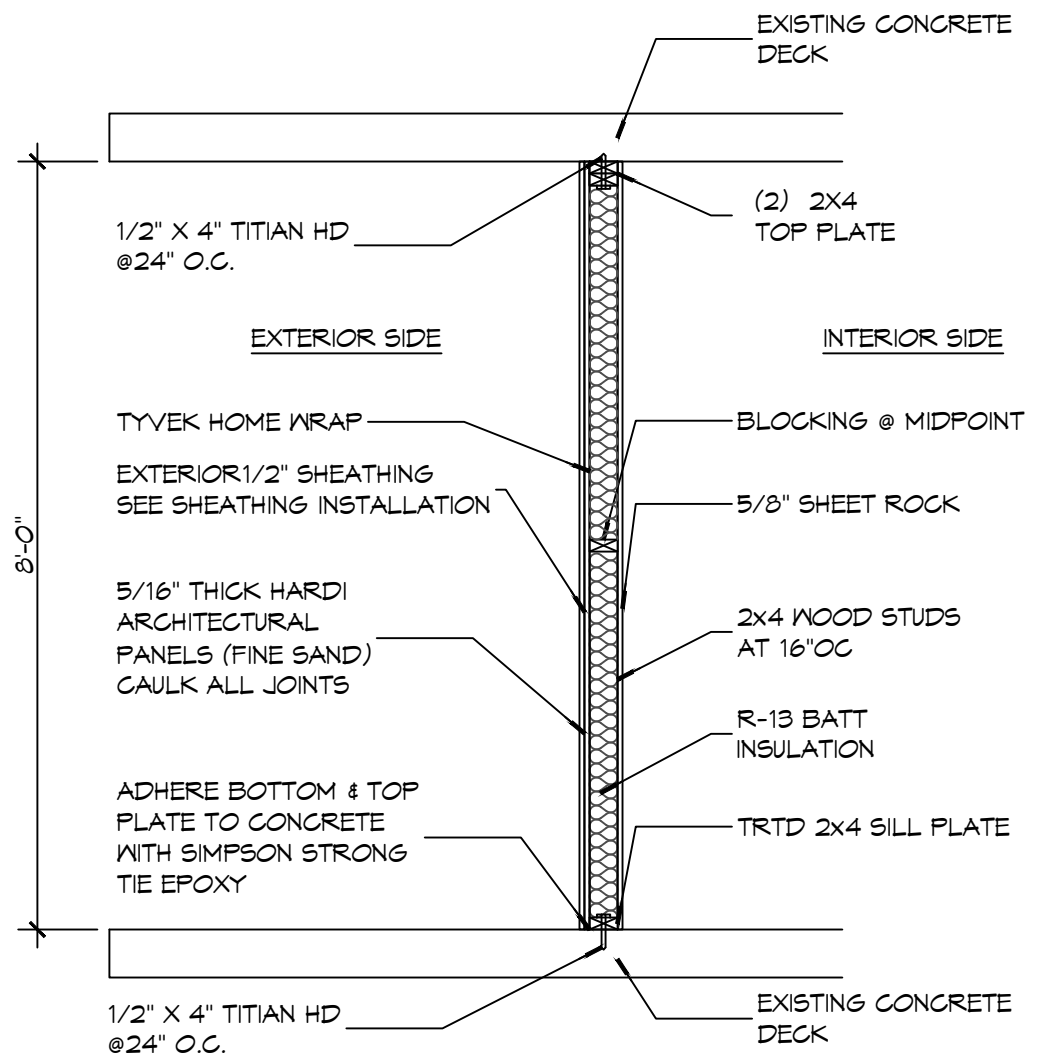
JMS
DATE: 10-30-2023
JOB No.: 2451
DRAWN BY: CKD
CHECKED BY: JMS

SHEET TITLE:
ROOF PLAN DETAILS

DRAWING NUMBER:
A104

SHEET No: 6 of 10

FILE NAME: A:\1 - Information\Architect\2023 - New Roof on 299 Shear\299 Shear\A106.dwg - Author: Brian Metch, PE - Date: 10/30/2023 10:30:23 AM



NAIL SPACING
 X = 4" OC
 Y = 4" OC
 Z = 6" OC
 X = PLATE EDGE NAIL SPACING
 Y = LONG EDGE NAIL SPACING
 Z = FIELD NAIL SPACING

EXTERIOR SHEATHING
 1/2" PLYWOOD ON FACE STAGGERED
 48" O.C. W/ 8d NAILS @ 4" O.C. FASTENING @ PANEL EDGES @ 4" O.C. FASTENING @ INTERMEDIATE MEMBERS @ 12" O.C.

A SECTION
SCALE: 1/2" = 1'-0"

29 SHEAR WALL EXTERIOR SHEATHING NAILING PATTERN
SCALE: 1/2" = 1'-0"

DESIGN CRITERIA
 THE CONSTRUCTION FOR SAID RESIDENCE, WHERE BASIC WIND SPEED IS 130 MILES PER HOUR, WIND EXPOSURE ZONE C, IS DESIGNED IN ACCORDANCE WITH: AMERICAN FOREST AND PAPER ASSOCIATION (AF&PA) WOOD FRAME CONSTRUCTION MANUAL FOR ONE AND TWO FAMILY DWELLINGS (WFCM) 2001 EDITION AS WELL AS THE INTERNATIONAL RESIDENTIAL CODE (IRC) 2021 EDITION

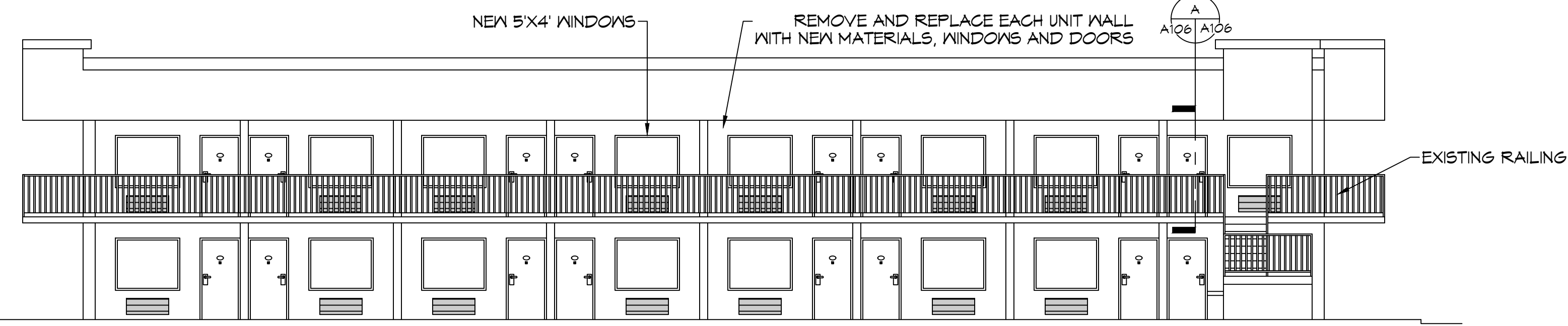
DOOR SCHEDULE

MK	WIDTH	HEIGHT	THK	DOOR MAT	FRAME	FR	REMARKS
DO1	3'-0"	6'-8"	1-3/4"	MTL	STEEL	NR	VERIFY EXTERIOR DOOR JAMB THICKNESS

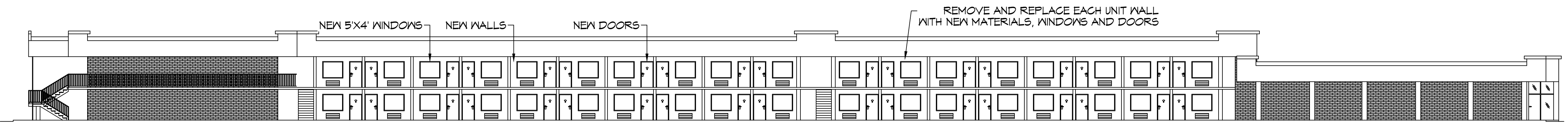
WINDOW SCHEDULE

MK	SIZE	FRAM E	TYPE	REMARKS
W01	5'-0" W x 4'-0" H	ALUM	N/A	LOW E TINTED

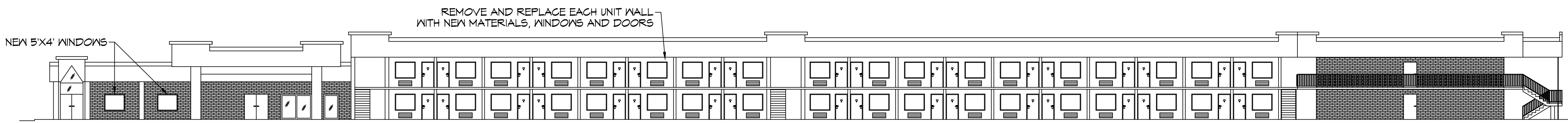
NOTE: ALL EXTERIOR WINDOW AND DOOR ASSEMBLIES TO BE RATED FOR 130 MPH WINDS AND SHALL BE MISSILE IMPACT RESISTANT.



30 NEW REAR ELEVATION
SCALE: 1/8" = 1'-0"



31 NEW SIDE ELEVATION
SCALE: 1/16" = 1'-0"



32 NEW SIDE ELEVATION
SCALE: 1/16" = 1'-0"

DAMMON ENGINEERING, INC.
 LOUISIANA & MISSISSIPPI
 Chief Engineer: Brian Metch, PE
 554 Old Spanish Trail
 Slidell, LA 70458
 www.dammonengineering.com
 info@dammonengineering.com
 PH: 985.649.8832

REVISIONS

#	DESCRIPTION	DATE

SEAL:

NEW PARTIAL RENOVATION
RED ROOF INN
 1662 GAUGE BLVD.
 SLIDELL, LA 70458
 JOB No: 10-30-2023
 DATE: 2-4-21
 DRAWN BY: CKD
 CHECKED BY: JMS

SHEET TITLE:
NEW BUILDING ELEVATIONS

DRAWING NUMBER:

A106

