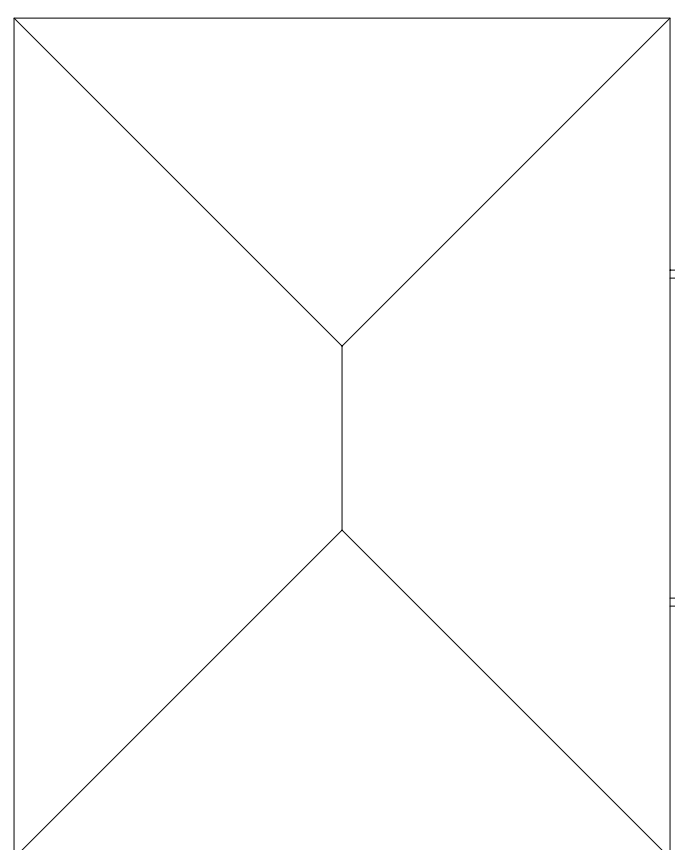
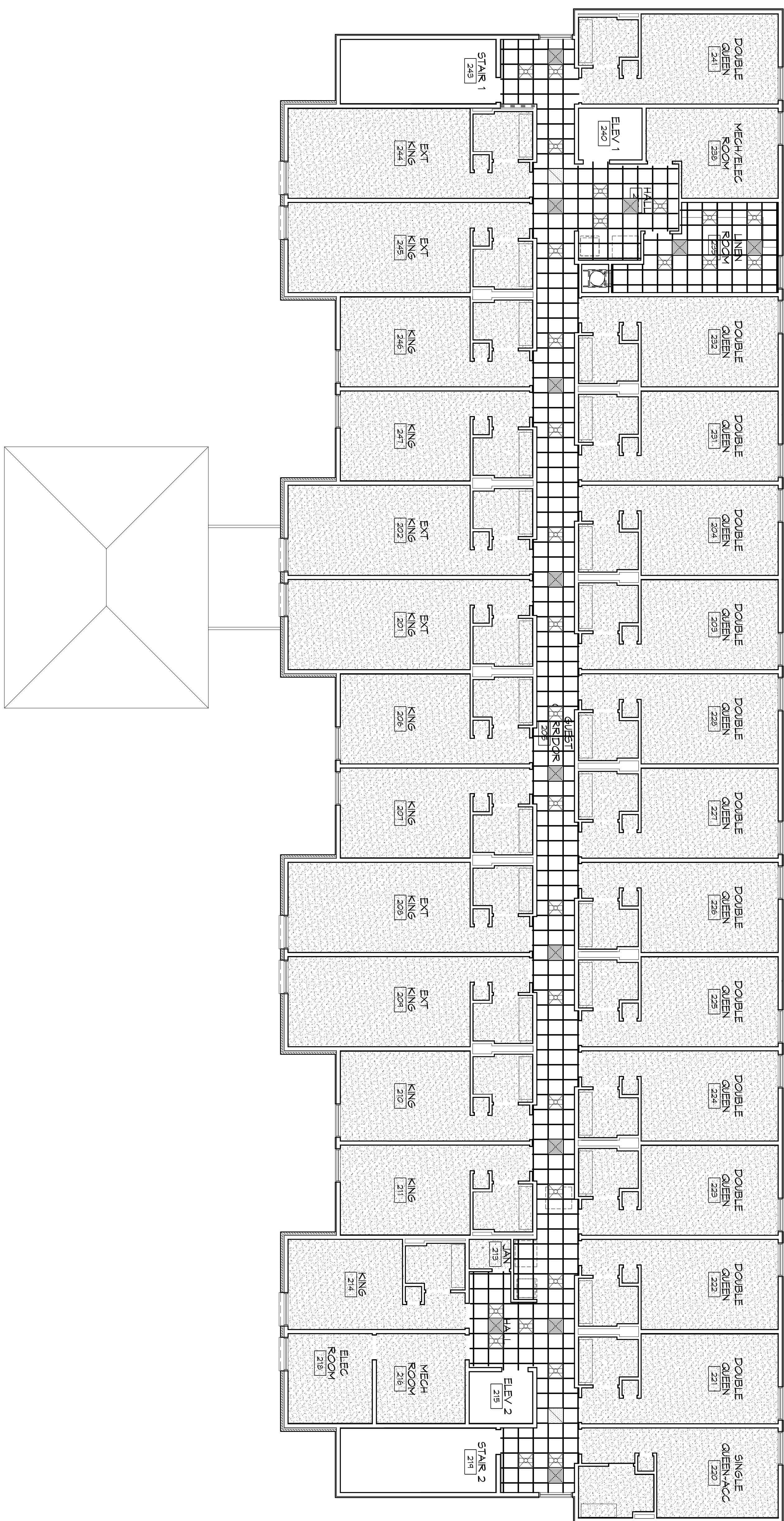


REFLECTED CEILING PLAN - LEVEL 2
SCALE: 1/8" = 1'-0"



DAMMON
ENGINEERING, INC.
Architects & Engineers

Chief Architect: Kevin J. Kinchen, NCARB
Chief Engineer: Brian Mistich, PE
554 Old Spanish Trail
Stidell, LA 70458

www.dammonengineering.com
info@dammonengineering.com
PH: 985.649.5832
F: 985.641.5950

REVISIONS		DATE
#	DESCRIPTION	

**PRELIMINARY
NOT FOR
CONSTRUCTION**

**SPORTSMAN - 03
01**

LOT #1 LA HWY 27
HACKBERRY, LA 70645

JOB No: 2141 DATE: JUN 09 2015

DRAWN BY: CKD/JTL CHECKED BY: KJK

The above drawings and specifications, design and engineering are the property of Dammon Engineering, Inc. and shall remain the property of Dammon Engineering, Inc. and no part thereof shall be copied, reproduced, or used in connection with any work of project other than the specific project for which they have been prepared and distributed without written consent of Dammon Engineering, Inc. Please contact with these drawings in any reproduction and construction.

SHEET TITLE:
REFLECTED CEILING PLAN
- LEVEL 2

DRAWING NUMBER:

A106

SHEET No. VALUE OF #