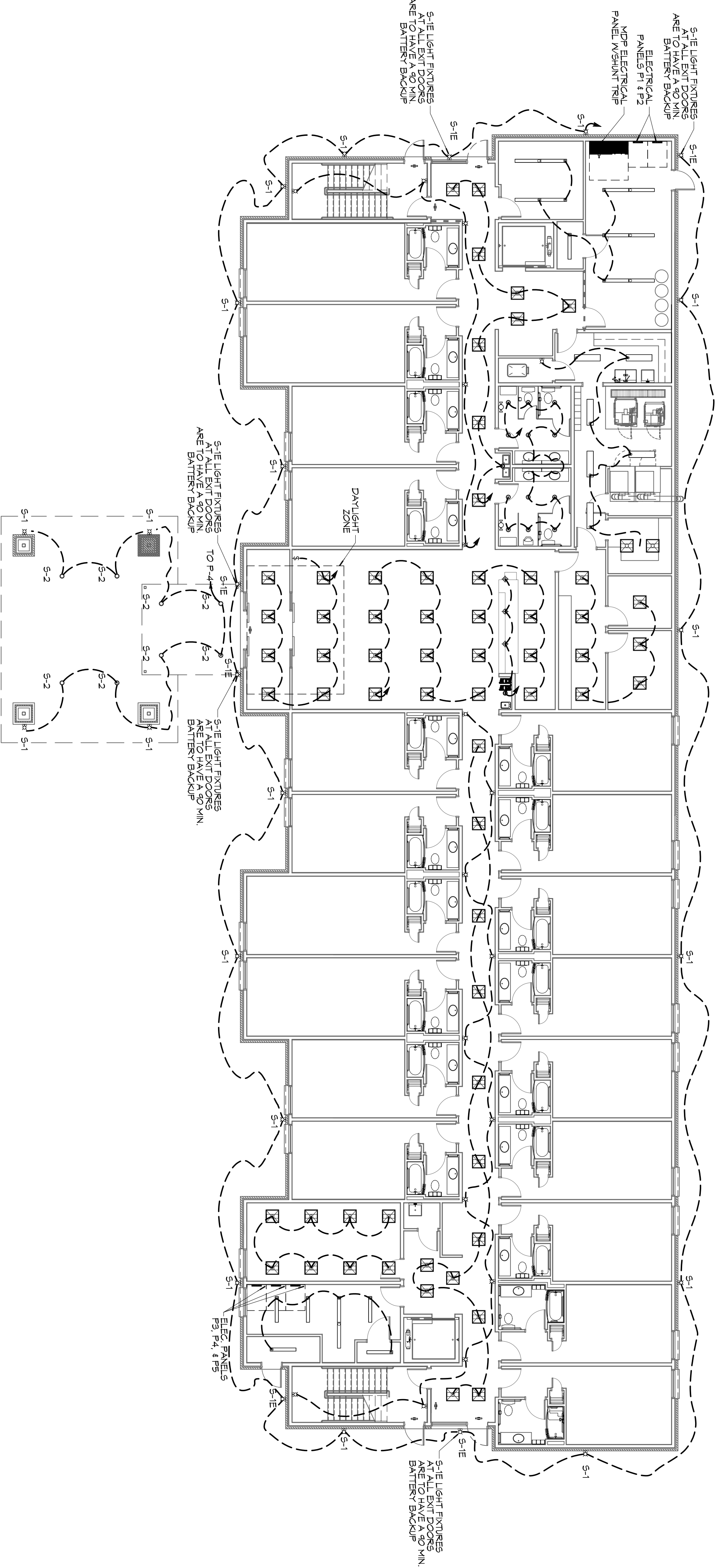


1ELECTRICAL POWER PLAN - LEVEL 1
SCALE: 3/32" = 1'-0"



1ELECTRICAL LIGHTING PLAN - LEVEL 1
SCALE: 3/32" = 1'-0"

POWER PLAN LEGEND

SYM.	DESCRIPTION	COMMENTS
⊖	STANDARD 120V P.O. EX. RECEPTACLE (NEMA 5-2 OR 15-1 (UNLESS OTHERWISE NOTED))	
⊖D	SINGLE-POLE DEVICATED RECEPTACLE (SEE PANEL SCHEDULE FOR CIRCUIT SIZE)	
⊖E	6FC DUPLEX RECEPTACLE	ALL OUTLETS WITHIN 48" OF A WATER SOURCE SHALL BE 6FC
⊖F1	6FC DUPLEX RECEPTACLE	
⊖F2	220V DRYER RECEPTACLE	
⊖F3	220V DEDICATED 6FC RECEPTACLE FOR CEILING	
⊖F4	WEATHER-PROOF 6FC DUPLEX RECEPTACLE @ 30' A.F.F. (UNLESS OTHERWISE NOTED)	
⊖F5	STANDARD 120V DUPLEX RECEPTACLE MOUNTED 6" ABOVE CEILING	
⊖F6	STANDARD 120V DUPLEX RECEPTACLE MOUNTED IN FLOOR	
⊖F7	STANDARD 120V DUPLEX RECEPTACLE MOUNTED IN FLOOR	
⊖F8	125V 15 AMP QUADPLEX-USB 5VDC 3 AMP USB CHARGER RECEPTACLE	VERIFY LOCATION WITH OWNER PRIOR TO INSTALLATION
⊖J	JUNCTION BOX	
⊖G	GENERATOR BATTERY CHARGER	
⊖TV	COAX-CABLE CONNECTION FOR TELEVISION	
⊖T	WALL DATA OUTLET	
⊖F	FLOOR DATA OUTLET	
⊖D	POWER DISCONNECT	
⊖M	6AS WATER-LEAKING WIRE/ELECTRIC DISCONNECT FOR WATER	
⊖AHU	AIR CONDITIONING AIR HANDLING UNIT. SEE MECH. SHEETS	
⊖C	AIR CONDITIONING CONDENSER UNIT ON CONCRETE PAD. SEE MECH. SHEETS	

NOTES:
 1. CONNECT ALL EMERGENCY/EXIT LIGHT FIXTURES TO NEAREST CONSTANT POWER SOURCE. A RECEPTACLE OR DATA OUTLET DESIGNATES THAT THERE ARE TO BE TWO OUTLETS AT THAT LOCATION, ONE OVER THE OTHER (ONE HIGH & ONE LOW ON WALL) EXAMPLE: ⊖F1 OR ⊖2

REVISIONS	DATE
# DESCRIPTION	

DAMMON ENGINEERING, INC.
 Architects & Engineers

Chief Architect: Kevin J. Kinchen, NCARB
 Chief Engineer: Brian Mistic, PE
 554 Old Spanish Trail
 Slidell, LA 70458

www.dammonengineering.com
 info@dammonengineering.com
 PH: 985.649.5832
 F: 985.641.9590

**PRELIMINARY
 NOT FOR
 CONSTRUCTION**

**SPORTSMAN
 LODGE**

LOT #1 LA HWY 27
 HACKBERRY, LA 70645

JOB No: 2141 DATE: JUNE 2, 2015
 DRAWN BY: CKD CHECKED BY: CKD

The above drawings and specifications, design and engineering represented hereby are and shall remain the property of Dammon Engineering, and no part thereof shall be copied, reproduced or used in connection with any work or project other than the specific project for which they were prepared and developed without the written consent of Dammon Engineering. Please contact with these drawings or specifications shall constitute an acknowledgment of acceptance of these drawings.

SHEET TITLE:
 POWER AND LIGHTING
 PLANS - LEVEL 1

DRAWING NUMBER:
E101

SHEET No: 02 of 5