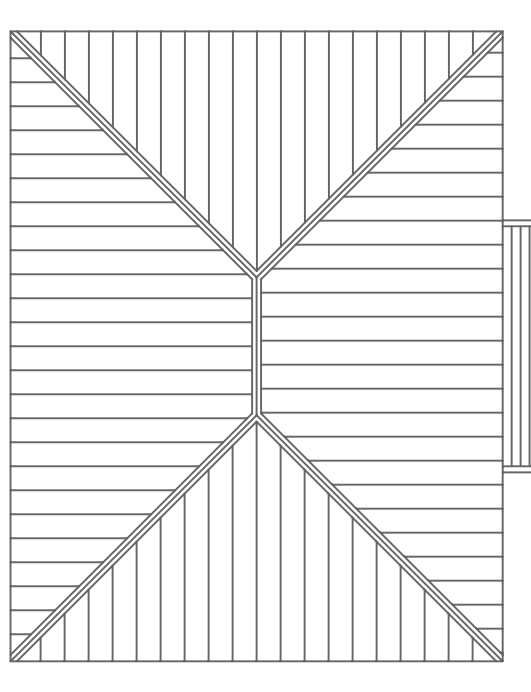
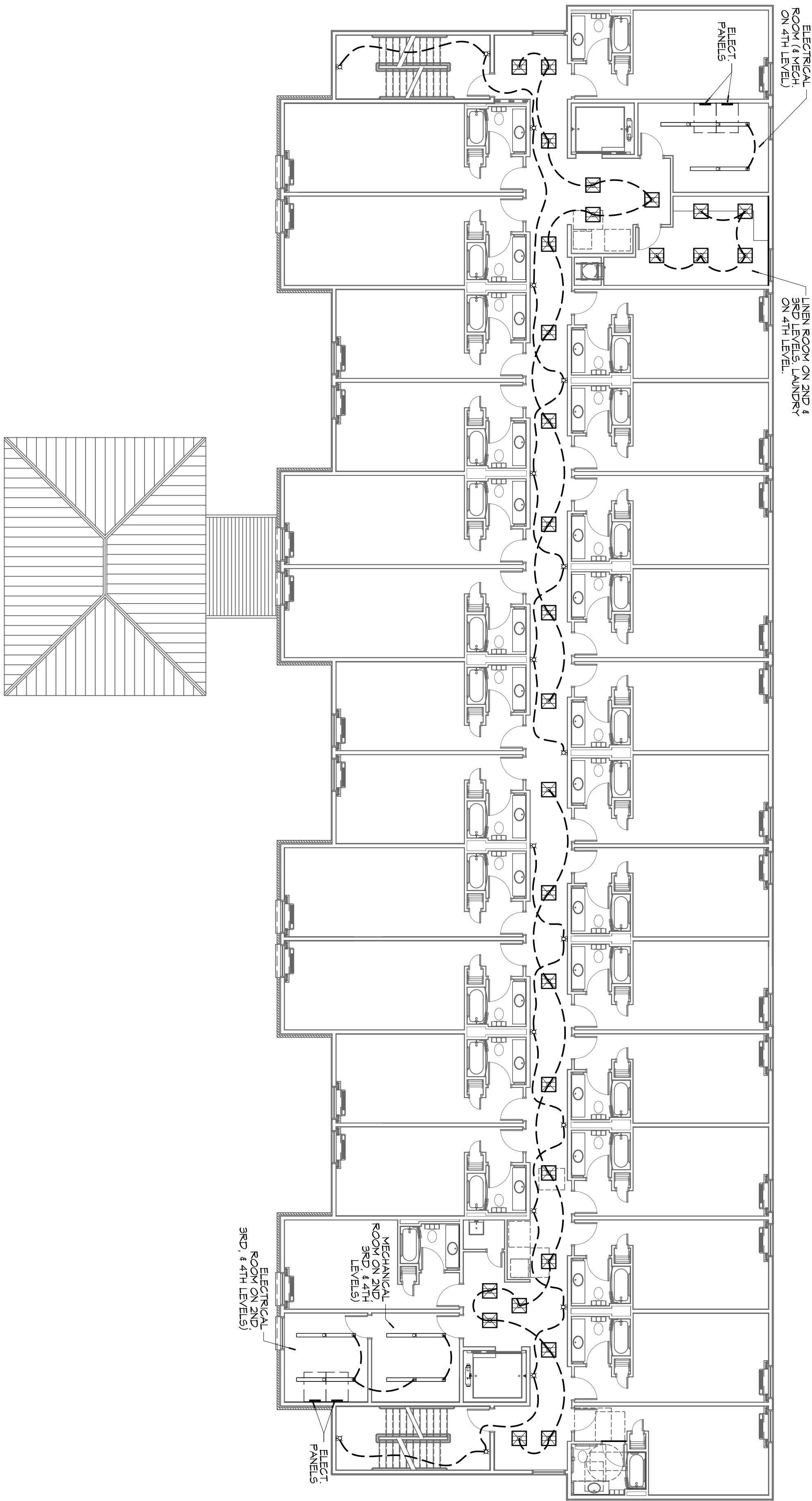


1 ELECTRICAL POWER PLAN - LEVELS 2, 3, & 4
SCALE: 3/32" = 1'-0"



1 ELECTRICAL LIGHTING PLAN - LEVELS 2, 3, & 4
SCALE: 3/32" = 1'-0"

POWER PLAN LEGEND

SYM.	DESCRIPTION	COMMENTS
⊖	STANDARD 120V DUPLEX RECEPTACLE, NEMA 5-2 OR 5-15 (UNLESS OTHERWISE NOTED)	
⊖ ₁	SINGLE-POLE DEDICATED RECEPTACLE, SEE PANEL SCHEDULE FOR CIRCUIT SIZE	
⊖ ₂	6FIC DUPLEX RECEPTACLE	ALL OUTLETS WITHIN 48" OF A WATER SOURCE SHALL BE 6FIC
⊖ ₃	6FIC QUAD RECEPTACLE	
⊖ ₄	220V DRYER RECEPTACLE	
⊖ ₅	220V DEDICATED 6FIC RECEPTACLE FOR CE FAN/CAN	
⊖ ₆	WEATHER-PROOF 6FIC DUPLEX RECEPTACLE @ 30' A.F.F. (UNLESS OTHERWISE NOTED)	
⊖ ₇	STANDARD 120V DUPLEX RECEPTACLE, MOUNTED 6' ABOVE COUNTER	
⊖ ₈	STANDARD 120V DUPLEX RECEPTACLE, MOUNTED IN FLOOR	
⊖ ₉	STANDARD QUAD RECEPTACLE, WALL-MOUNTED	
⊖ ₁₀	STANDARD QUAD RECEPTACLE, WALL-MOUNTED	
⊖ ₁₁	STANDARD QUAD RECEPTACLE, HANGING RECEPTACLE BOX RECESSED IN CONG. TYPICAL	
⊖ ₁₂	125V 15 AMP QUAD-POLE USB 5V/DC 3 AMP HUBBELL USB CHARGER RECEPTACLE	VERIFY LOCATION WITH OWNER PRIOR TO INSTALLATION
⊖ ₁₃	JUNCTION BOX	
⊖ ₁₄	GENERATOR BATTERY CHARGER	
⊖ ₁₅	COAX-CABLE CONNECTION FOR TELEVISION	
⊖ ₁₆	WALL DATA OUTLET	
⊖ ₁₇	FLOOR DATA OUTLET	
⊖ ₁₈	POWER DISCONNECT	

NOTES:
 1. CONNECT ALL EMERGENCY/EXIT LIGHT FIXTURES TO NEAREST CONSTANT POWER SOURCE.
 2. THERE ARE TO BE TWO OUTLETS AT THAT LOCATION, ONE OVER THE OTHER (ONE HIGH & ONE LOW ON WALL). EXAMPLE: ⊖₈ OR ⊖₉

DAMMON ENGINEERING, INC.
 Architects & Engineers
 Chief Architect: Kevin J. Kinchen, NCARB
 Chief Engineer: Brian Mistich, PE
 554 Old Spanish Trail
 Slidell, LA 70458
 www.dammonengineering.com
 info@dammonengineering.com
 PH: 985.649.5832
 F: 985.641.5950

REVISIONS

#	DESCRIPTION	DATE

PRELIMINARY NOT FOR CONSTRUCTION

SEAL: _____

DAMMON ENGINEERING, INC.

LOT #1 LA HWY 27
 HACKBERRY, LA 70645

JOB No: 2141 DATE: JUNE 2, 2015
 DRAWN BY: CKD CHECKED BY: CKD

SHEET TITLE:
 POWER AND LIGHTING PLANS - LEVEL 1

DRAWING NUMBER:
E102

CO of #