

DAMMON
ENGINEERING, INC.

CHIEF ENGINEER
EMMETT
DAMMON, P.E.
CHIEF ARCHITECT
ROBERT
WILTSE

554 OLD SPANISH TRAIL
SLIDELL, LA. 70458
OFFICE: 985-649-5832
FAX: 985-641-5950

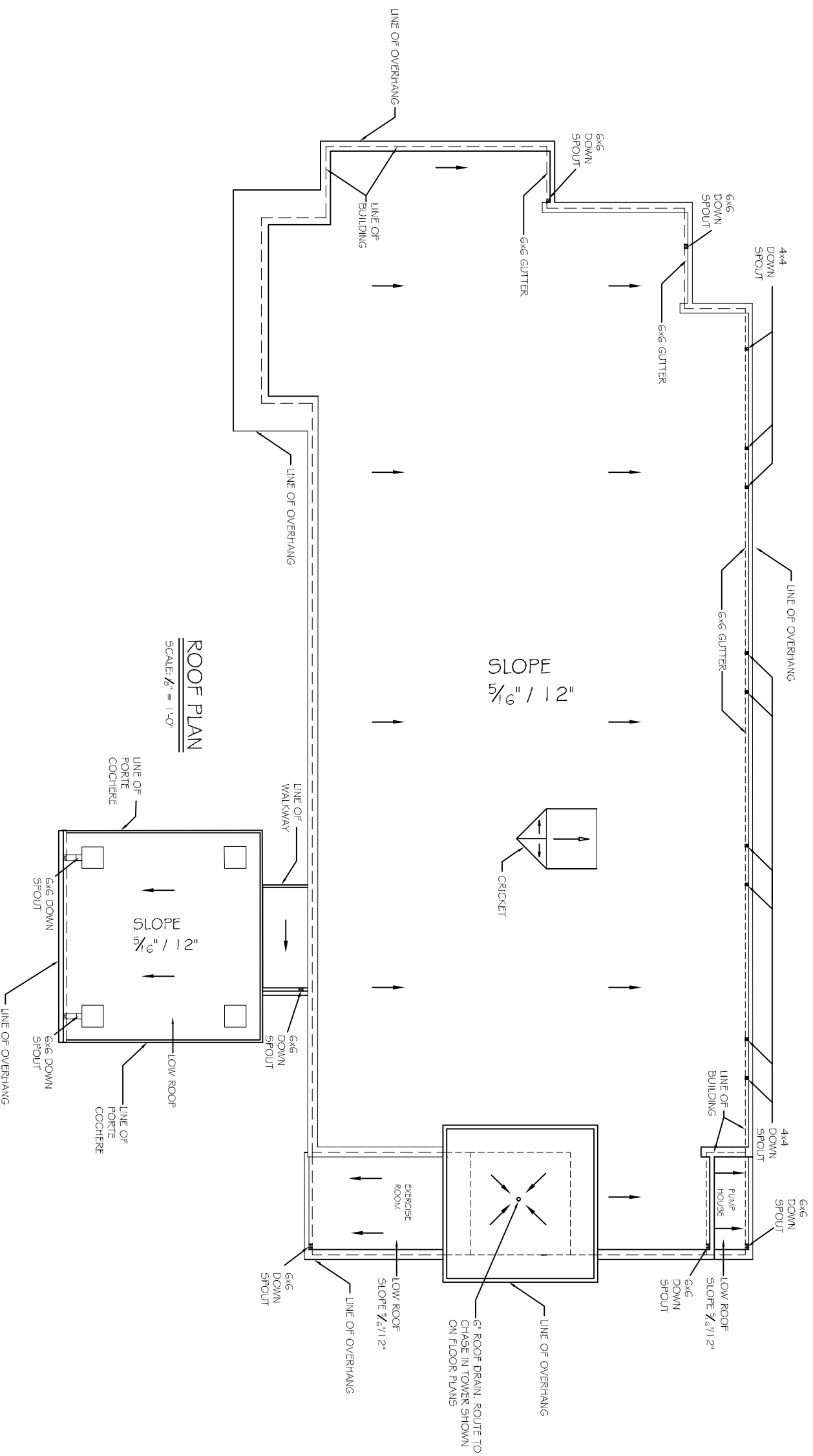
WEBSITE:
WWW.DAMMONENGINEERING.COM
EMAIL:
DAMMONENG@BELLOUTH.NET

ARCHITECTURE
ENGINEERING
STUDIES
PLANNING
INVESTIGATION
EXPERT WITNESS

LA QUINTA
INN & SUITES

SPORTSMAN PARK
LOT 14
CABLEAS PARKWAY
GONZALES
LOUISIANA

ROOF
PLAN



REV:

SCALE: AS NOTED

JOB#: 2141

DATE: 07-03-12

SHEET 13

A-8

OF 36