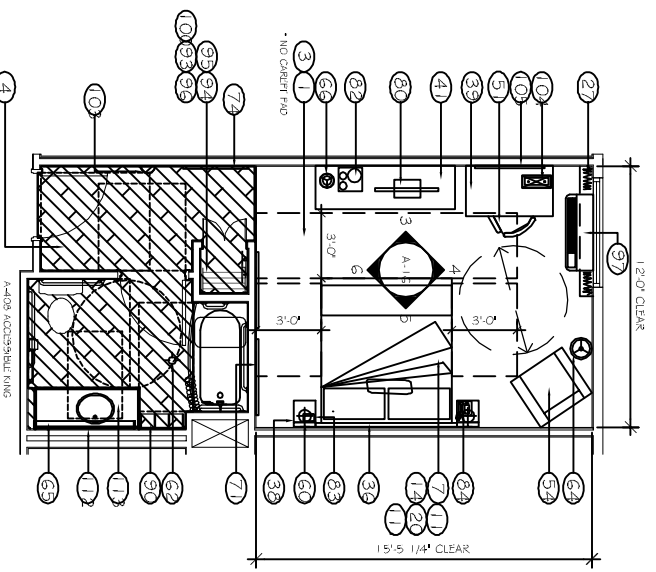
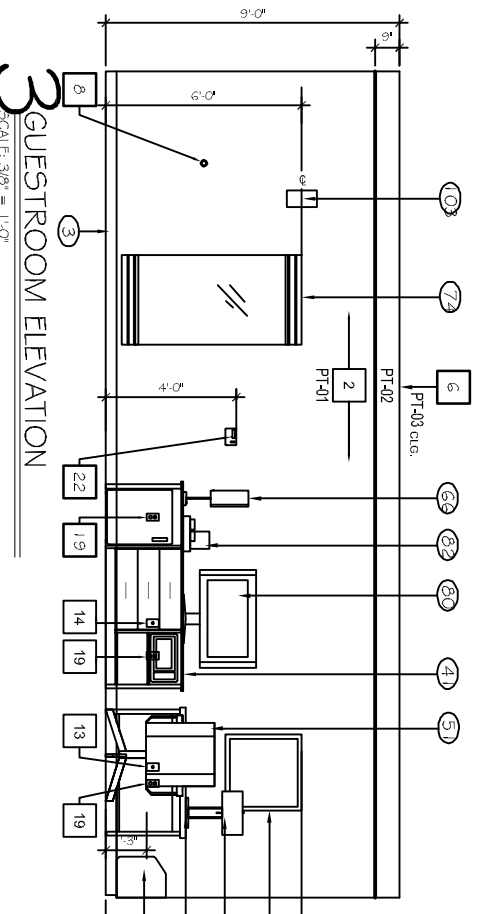


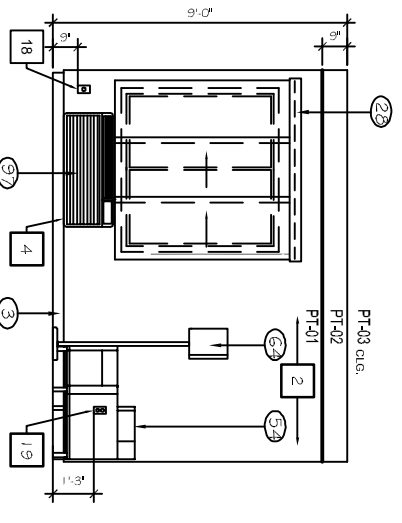
DIMENSIONAL CONTROL PLAN
SCALE: 1/4" = 1'-0"



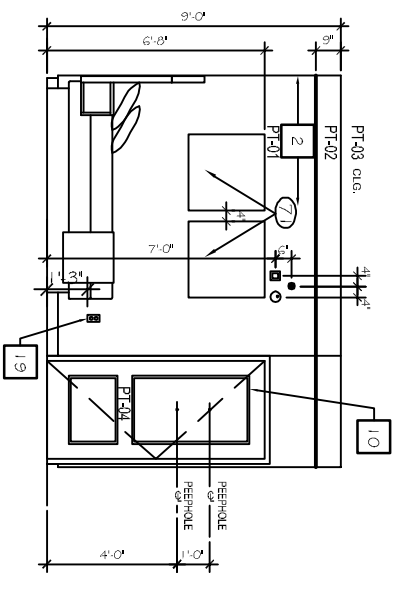
FURNITURE PLAN
SCALE: 1/4" = 1'-0"



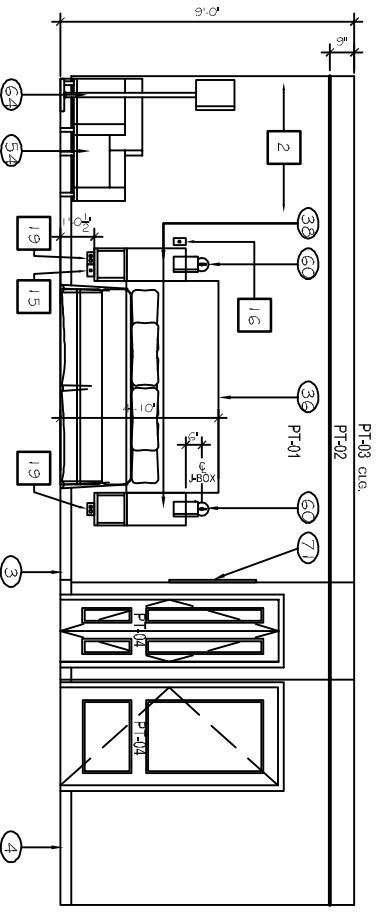
3 GUESTROOM ELEVATION
SCALE: 3/8" = 1'-0"



4 GUESTROOM ELEVATION
SCALE: 3/8" = 1'-0"



6 GUESTROOM ELEVATION
SCALE: 3/8" = 1'-0"



5 GUESTROOM ELEVATION
SCALE: 3/8" = 1'-0"

DRAWING NOTES

A. VANT FLOORING, ANIS. DETERMINE STARTING POINT FOR EACH ROW SO AS TO MAINTAIN A MINIMUM 12" LONG PIECE AT EDGES.

GENERAL NOTES

- ELECTRICAL OUTLETS IN ADJACENT ROOMS OF THE SAME TYPE SHALL BE OFFSET A MAXIMUM OF 8" & SEP. BY STUD.
- REFER TO BUILDING PLANS FOR LOCATION OF GUEST ROOM TYPES.
- ALL PLAN DIMENSIONS ARE TO FACE OF STUD.
- REF. #10 THRU #12 FOR BATHROOM FURNISHINGS.

REFERENCE FINISH SELECTION BOOK FOR PAINT AND MATERIAL LEGEND. XX

FOR F.F.E. (V-AST-C) SCHEDULE SEE WIRKAIT DESIGN SCENE MANUAL

B. REFER A-501 FOR PARTITION TYPES

FF&E SCHEDULE	FF&E SCHEDULE (CONTINUED)
<p>CARPET / FLOORING (00)</p> <p>1 GUESTROOM CARPET V-AST-500-1-CP</p> <p>2 GUESTROOM CARPET PAD V-AST-500-1-CP-P</p> <p>3 GUESTROOM CARPET BASE V-AST-500-1-CP-B</p> <p>4 GUESTROOM BATH RESILIENT TILE V-AST-502-RT</p> <p>BEDDING / DRAPERY (100)</p> <p>5 CONVERTER FABRICATION - QD V-AST-1000-BD</p> <p>6 CONVERTER FABRICATION - QUEEN V-AST-1000-QB</p> <p>7 CONVERTER FABRICATION - KING V-AST-100-4D</p> <p>8 CONSOLE TABLE V-AST-100A-BDF</p> <p>9 BED THROW FABRICATION DOUBLE V-AST-102D-BD</p> <p>10 BED THROW FABRICATION QUEEN V-AST-102Q-BD</p> <p>11 BED THROW FABRICATION KING V-AST-102K-BD</p> <p>12 BESKRTI FABRICATION DOUBLE V-AST-103D-BD</p> <p>13 BESKRTI FABRICATION QUEEN V-AST-103Q-BD</p> <p>14 BESKRTI FABRICATION KING V-AST-103K-BD</p> <p>15 BESKRTI FABRICATION KING V-AST-103K-BDF</p> <p>16 MATTRESS AND BOXSPRING KING V-AST-105A-BD</p> <p>17 MATTRESS AND BOXSPRING DOUBLE V-AST-106A-BD</p> <p>18 MATTRESS AND BOXSPRING QUEEN V-AST-106A-BD</p> <p>19 MATTRESS AND BOXSPRING KING V-AST-107A-BD</p> <p>20 BED BASE - KING ADA V-AST-107B-BD</p> <p>21 MATTRESS AND BOXSPRING DOUBLE ADA V-AST-108A-BD</p> <p>22 BED BASE - DOUBLE ADA V-AST-108A-BD</p> <p>23 MATTRESS AND BOXSPRING QUEEN V-AST-109A-BD</p> <p>24 ROBE HOOK V-AST-109A-BD</p> <p>25 MATTRESS AND BOXSPRING QUEEN ADA V-AST-110A</p> <p>26 SHIRT HANGER MINI HOOK V-AST-120A</p> <p>27 ADA SLIDER SHADE AT ACCESSIBLE ROOMS V-AST-123A</p> <p>28 NOT USED V-AST-122A</p> <p>29 SHEER AT FRENCH DOOR - NOT USED V-AST-122A</p> <p>30 SHEER FABRIC - NOT USED V-AST-122A</p> <p>31 SHEER FABRIC - NOT USED V-AST-122A</p> <p>32 SHEER FABRIC - NOT USED V-AST-122A</p> <p>33 SHEER FABRIC - NOT USED V-AST-122A</p> <p>34 SHEER FABRIC - NOT USED V-AST-122A</p> <p>35 SHEER FABRIC - NOT USED V-AST-122A</p> <p>36 SHEER FABRIC - NOT USED V-AST-122A</p> <p>37 SHEER FABRIC - NOT USED V-AST-122A</p> <p>38 SHEER FABRIC - NOT USED V-AST-122A</p> <p>39 SHEER FABRIC - NOT USED V-AST-122A</p> <p>40 SHEER FABRIC - NOT USED V-AST-122A</p> <p>41 SHEER FABRIC - NOT USED V-AST-122A</p> <p>42 SHEER FABRIC - NOT USED V-AST-122A</p> <p>43 SHEER FABRIC - NOT USED V-AST-122A</p> <p>44 SHEER FABRIC - NOT USED V-AST-122A</p> <p>45 SHEER FABRIC - NOT USED V-AST-122A</p> <p>46 SHEER FABRIC - NOT USED V-AST-122A</p> <p>47 SHEER FABRIC - NOT USED V-AST-122A</p> <p>48 SHEER FABRIC - NOT USED V-AST-122A</p> <p>49 SHEER FABRIC - NOT USED V-AST-122A</p> <p>50 SHEER FABRIC - NOT USED V-AST-122A</p> <p>51 SHEER FABRIC - NOT USED V-AST-122A</p> <p>52 SHEER FABRIC - NOT USED V-AST-122A</p> <p>53 SHEER FABRIC - NOT USED V-AST-122A</p> <p>54 SHEER FABRIC - NOT USED V-AST-122A</p> <p>55 SHEER FABRIC - NOT USED V-AST-122A</p> <p>56 SHEER FABRIC - NOT USED V-AST-122A</p> <p>57 SHEER FABRIC - NOT USED V-AST-122A</p> <p>58 SHEER FABRIC - NOT USED V-AST-122A</p> <p>59 SHEER FABRIC - NOT USED V-AST-122A</p> <p>60 SHEER FABRIC - NOT USED V-AST-122A</p> <p>61 SHEER FABRIC - NOT USED V-AST-122A</p> <p>62 SHEER FABRIC - NOT USED V-AST-122A</p> <p>63 SHEER FABRIC - NOT USED V-AST-122A</p> <p>64 SHEER FABRIC - NOT USED V-AST-122A</p> <p>65 SHEER FABRIC - NOT USED V-AST-122A</p> <p>66 SHEER FABRIC - NOT USED V-AST-122A</p> <p>67 SHEER FABRIC - NOT USED V-AST-122A</p> <p>68 SHEER FABRIC - NOT USED V-AST-122A</p> <p>69 SHEER FABRIC - NOT USED V-AST-122A</p> <p>70 SHEER FABRIC - NOT USED V-AST-122A</p> <p>71 SHEER FABRIC - NOT USED V-AST-122A</p> <p>72 SHEER FABRIC - NOT USED V-AST-122A</p> <p>73 SHEER FABRIC - NOT USED V-AST-122A</p> <p>74 SHEER FABRIC - NOT USED V-AST-122A</p> <p>75 SHEER FABRIC - NOT USED V-AST-122A</p> <p>76 SHEER FABRIC - NOT USED V-AST-122A</p> <p>77 SHEER FABRIC - NOT USED V-AST-122A</p> <p>78 SHEER FABRIC - NOT USED V-AST-122A</p> <p>79 SHEER FABRIC - NOT USED V-AST-122A</p> <p>80 SHEER FABRIC - NOT USED V-AST-122A</p> <p>81 SHEER FABRIC - NOT USED V-AST-122A</p> <p>82 SHEER FABRIC - NOT USED V-AST-122A</p> <p>83 SHEER FABRIC - NOT USED V-AST-122A</p> <p>84 SHEER FABRIC - NOT USED V-AST-122A</p> <p>85 SHEER FABRIC - NOT USED V-AST-122A</p> <p>86 SHEER FABRIC - NOT USED V-AST-122A</p> <p>87 SHEER FABRIC - NOT USED V-AST-122A</p> <p>88 SHEER FABRIC - NOT USED V-AST-122A</p> <p>89 SHEER FABRIC - NOT USED V-AST-122A</p> <p>90 SHEER FABRIC - NOT USED V-AST-122A</p> <p>91 SHEER FABRIC - NOT USED V-AST-122A</p> <p>92 SHEER FABRIC - NOT USED V-AST-122A</p> <p>93 SHEER FABRIC - NOT USED V-AST-122A</p> <p>94 SHEER FABRIC - NOT USED V-AST-122A</p> <p>95 SHEER FABRIC - NOT USED V-AST-122A</p> <p>96 SHEER FABRIC - NOT USED V-AST-122A</p> <p>97 SHEER FABRIC - NOT USED V-AST-122A</p> <p>98 SHEER FABRIC - NOT USED V-AST-122A</p> <p>99 SHEER FABRIC - NOT USED V-AST-122A</p> <p>100 SHEER FABRIC - NOT USED V-AST-122A</p>	<p>ART / MIRRORS (500)</p> <p>1 FRAMED ARTWORK IN GUESTROOM V-AST-500-ART</p> <p>2 FRAMED ARTWORK IN GUESTROOM NOT USED V-AST-500-ART</p> <p>3 FRAMED ARTWORK IN GUESTROOM NOT USED V-AST-500-ART</p> <p>4 FULL LENGTH MIRROR V-AST-501-MR</p> <p>5 VANITY MIRROR V-AST-503-ART</p> <p>6 ARTIST MIRROR V-AST-507-ART</p> <p>7 ARTIST MIRROR V-AST-505-MR</p> <p>8 VANITY MIRROR - ADA V-AST-504-ART</p> <p>GUESTROOM MISC (600)</p> <p>1 MICRO-FRIDGE UNIT V-AST-601-MISC</p> <p>2 MICROVAPE V-AST-600A-MISC</p> <p>3 REFRIGERATOR V-AST-601B-MISC</p> <p>4 32" FLAT PANEL TV V-AST-602-MISC</p> <p>5 TV SWIVEL WALL MOUNT V-AST-602A-MISC</p> <p>6 COFFEE MAKER V-AST-603-MISC</p> <p>7 CLOCK RADIO V-AST-604-MISC</p> <p>8 BEDSIDE TELEPHONE V-AST-605-MISC</p> <p>9 SPEAKER TELEPHONE V-AST-606-MISC</p> <p>10 HAIR DRYER V-AST-607-MISC</p> <p>11 TOILET PAPER HOLDER V-AST-608-MISC</p> <p>12 SHOWER CURTAIN ROD V-AST-609-MISC</p> <p>13 TOWEL BAR V-AST-610-MISC</p> <p>14 DECORATIVE TOWEL SHELF V-AST-611-MISC</p> <p>15 FASCIAL TISSUE DISPENSER V-AST-612-MISC</p> <p>16 ROBE HOOK V-AST-613A-MISC</p> <p>17 SUIT HANGER MINI HOOK V-AST-614A-MISC</p> <p>18 SHIRT HANGER MINI HOOK V-AST-614B-MISC</p> <p>19 LUGGAGE RACK V-AST-615-MISC</p> <p>20 IRON, IRON BOARD & HOOK V-AST-616-MISC</p> <p>21 P/VC V-AST-617-MISC</p> <p>22 P/VC DETECTOR V-AST-618-MISC</p> <p>23 COAT CLOSET ROD W/ SHELF V-AST-619-MISC</p> <p>24 COAT CLOSET ROD W/ SHELF V-AST-620-MISC</p> <p>25 GUESTROOM DOOR LOCK V-AST-621-MISC</p> <p>26 WALLCOVERING (800) NOT USED</p>

KEY SCHEDULE

- CARPET PAD & BASE
- TEXTURE DRY WALL - REFER TO FINISH SCHEDULE
- CLOTHES ROD
- THRU - WALL AIR CONDITIONING UNIT ROUGH OPENING 3'-6" X 4'-4" MIN.
- REINFORCING BLOCKING IN WALL
- TEXTURED CEILING - REFER TO FINISH SCHEDULE
- DOOR MOUNTED DOOR STOP
- WALL MOUNTED DOOR STOP
- DECORATIVE WOOD MOLDINGS
- 2 PANEL METAL DOOR AND FRAME - PAINTED. REFER TO DOOR SCHEDULE FOR LOCK HARDWARE
- NOT USED
- GYPSUM BOARD RETURN AT HEAD, JAMB & SILL
- TELEPHONE DATA DUPLEX HOUSING
- PROVIDE 3/4" CONDUIT POOL
- TELEVISION OUTLET w/ 2 CAT-5 OUTLETS IN A SINGLE TV BOX. REFER TO FLOOR PLANS AND DETAILS FOR DIMENSIONS AND LOCATION
- TELEPHONE OUTLET. REFER TO FLOOR PLANS AND DETAILS FOR DIMENSIONS AND LOCATION
- LIGHT SWITCH. REFER TO FLOOR PLANS AND DETAILS FOR DIMENSIONS AND LOCATION. ILLUMINATED SWITCH AT ENTRY AND BATHROOM
- CONNECTING DOORS. SEE BUILDING PLAN FOR LOCATION
- 280V. OUTLET. REFER TO ELECTRICAL PLANS FOR MORE INFORMATION
- DUPLEX OUTLET. INSTALL HORIZONTALLY AT NIGHTSTANDS.
- QUAD OUTLET
- ACQUANTING HEIGHT OF HEADBOARD, NIGHTSTAND WALL LAMP(S) BASED ON LOW PROFILE BOXSPRING.
- 1.5" IN HEIGHT ISB IN HANDICAPPED ACCESSIBLE ROOMS AND 8" IN OTHER ROOMS.
- 2

DAMMON ENGINEERING, INC.
 CHIEF ENGINEER
 EMMETT DAMMON, P.E.
 CHIEF ARCHITECT
 ROBERT WILTSE

554 OLD SPANISH TRAIL
 SUDELL, LA, 70458
 OFFICE: 985-649-5832
 FAX: 985-641-5950

WEBSITE:
 WWW.DAMMONENGINEERING.COM
 EMAIL:
 DAMMONENG@BELL.SUDELL.NET

ARCHITECTURE
 ENGINEERING
 STUDIES
 PLANNING
 INVESTIGATION
 EXPERT WITNESS

LA QUINTA
 INN & SUITES

SPORTSMAN PARK
 LOT 14

CABLEAS PARKWAY
 GONZALES
 LOUISIANA

ACCESSIBLE
 KING

REV: _____

SCALE: AS NOTED

JOB# 2141

DATE: 07-03-12

SHEET 21

A-16

OF 36