

**DAMMON**  
ENGINEERING, INC.

CHIEF ENGINEER  
EMMETT  
DAMMON, P.E.

CHIEF ARCHITECT  
ROBERT  
WILTSE

554 OLD SPANISH TRAIL  
SUITE L, LA. 70458  
OFFICE: 985-649-5832  
FAX: 985-641-5950

WWW.DAMMONENGINEERING.COM  
WEBSITE:  
EMAIL:  
DAMMONENG@BELLCSOUTH.NET

ARCHITECTURE  
ENGINEERING  
STUDIES  
PLANNING  
INVESTIGATION  
EXPERT WITNESS

LA QUINTA  
INN & SUITES

SPORSTMAN'S PARK  
LOT 14  
CABELLA'S PARKWAY  
GONZALES  
LOUISIANA

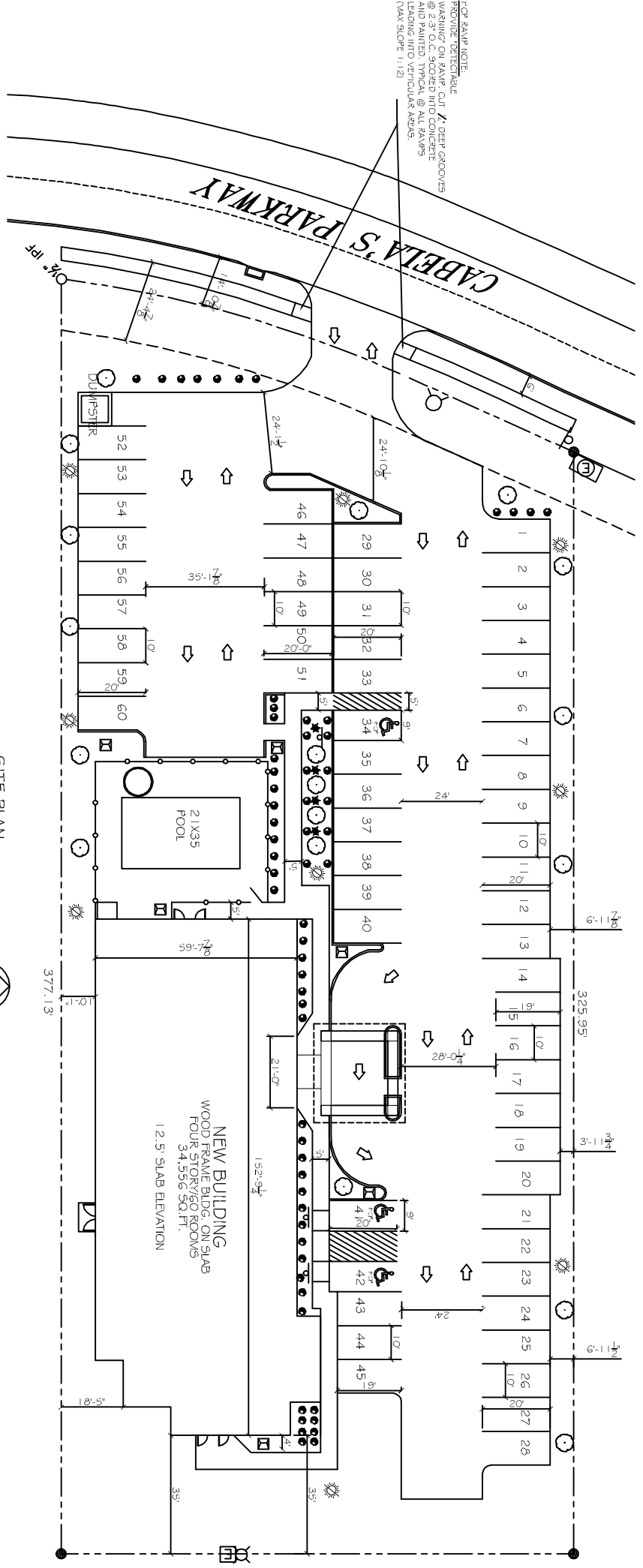
SITE & LANDSCAPING  
PLAN

REV: 7-30-12  
SCALE: AS NOTED  
JOB#: 2141  
DATE: 07-03-12  
SHEET 2

C-1

OF 36

- SITE LEGEND**
- - - - - PROPERTY LINE
  - - - - - SETBACK LINE
  - - - - - BUFFER ZONE LINE
  - ..... UTIL. EASEMENT LINE
  - - - - - OPAQUE FENCE
  - ⊞ HANDICAP PARKING
  - ⊞ HANDICAP PARKING SIGN
  - ⊞ LITTER RECEPTACLE
  - ⇨ TRAFFIC ARROW
  - ☀ SITE LIGHTING



**SITE PLAN**  
SCALE: 1"=20'-0"



**NOTE:**  
SIGNAGE SHALL COMPLY  
WITH SIGNAGE GUIDELINES

- 9 GA. SHEET METAL MOUNT  
WITH 3 CHROME ROUND HEAD  
SCREWS (WHITE BACKGROUND)
- SILK SCREEN INTERNATIONAL H.C.  
SYMBOL (WHITE ON BLUE BACKGROUND)
- VAN  
ACCESSIBLE SIGN
- 2"x2" STEEL TUBE  
CLOSE TOP END AND GRIND SMOOTH.  
PAINT WHITE
- CONG. BASE TO BE CENTER ON  
H.C. PARKING SPACE. TYP.

**PARKING REQUIREMENTS**  
REQUIRED: 1 SPACE PER ROOM  
PROVIDED: 60 SPACES

