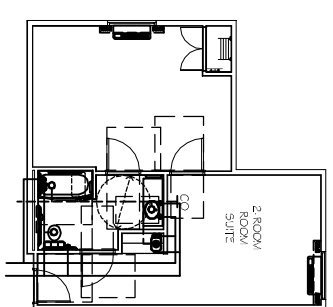
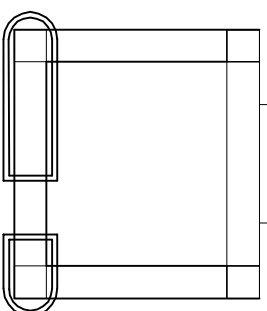
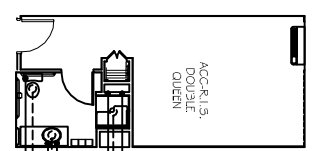


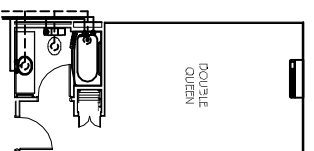
GROUND FLR PLUMBING PLAN  
SCALE: 1/8"=1'-0"



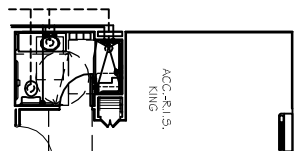
PLUMBING PLAN  
2-Room ACC-KING RM SUITE  
SCALE: 1/8"=1'-0"



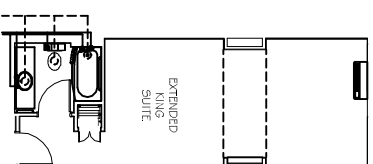
PLUMBING PLAN  
ACC-R1.5  
DOUBLE QUEEN  
HANDICAP SHOWER  
SCALE: 1/8"=1'-0"



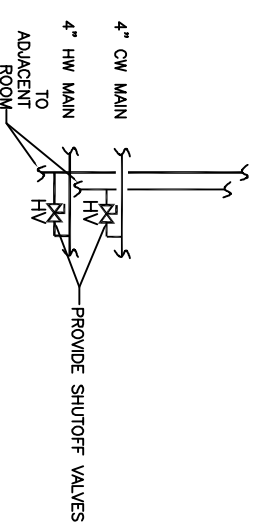
PLUMBING PLAN  
DOUBLE QUEEN  
SCALE: 1/8"=1'-0"



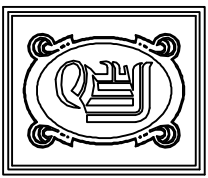
PLUMBING PLAN  
ACC-R1.5 - KING  
SCALE: 1/8"=1'-0"



PLUMBING PLAN  
EXTENDED KING SUITE  
SCALE: 1/8"=1'-0"



TYPICAL SUITE  
SHUTOFF VALVE DETAIL.  
N.T.S.



**DAMMON**  
ENGINEERING, INC.

CHIEF ENGINEER  
EMMETT  
DAMMON, P.E.  
CHIEF ARCHITECT  
ROBERT  
WILTSE

554 OLD SPANISH TRAIL  
SUITE LL, LA. 70458  
OFFICE: 985-649-5832  
FAX: 985-641-5950

WEBSITE: [WWW.DAMMONENGINEERING.COM](http://WWW.DAMMONENGINEERING.COM)  
EMAIL: [DAMMONENG@BELLSOUTH.NET](mailto:DAMMONENG@BELLSOUTH.NET)

ARCHITECTURE  
ENGINEERING  
STUDIES  
PLANNING  
INVESTIGATION  
EXPERT WITNESS

LA QUINTA  
INN & SUITES

SPORTSMAN PARK  
LOT 14  
CABLEAS PARKWAY  
GONZALES  
LOUISIANA

GROUND FLOOR  
PLUMBING PLAN

REV:

SCALE: AS NOTED

JOB#: 2141

DATE: 07-03-12

SHEET 34

P-1

OF 36