

**DAMMON**  
ENGINEERING, INC.

CHIEF ENGINEER  
EMMETT  
DAMMON, P.E.  
CHIEF ARCHITECT  
ROBERT  
WILTSE

554 OLD SPANISH TRAIL  
SLIDELL, LA, 70458  
OFFICE: 985-649-5832  
FAX: 985-641-5950

WEBSITE:  
WWW.DAMMONENGINEERING.COM  
EMAIL:  
DAMMONEN@BELLCSOUTH.NET

ARCHITECTURE  
ENGINEERING  
STUDIES  
PLANNING  
INVESTIGATION  
EXPERT WITNESS

LA QUINTA  
INN & SUITES

SPORSTMAN'S PARK  
LOT 14  
CABELAS PARKWAY  
GONZALES  
LOUISIANA

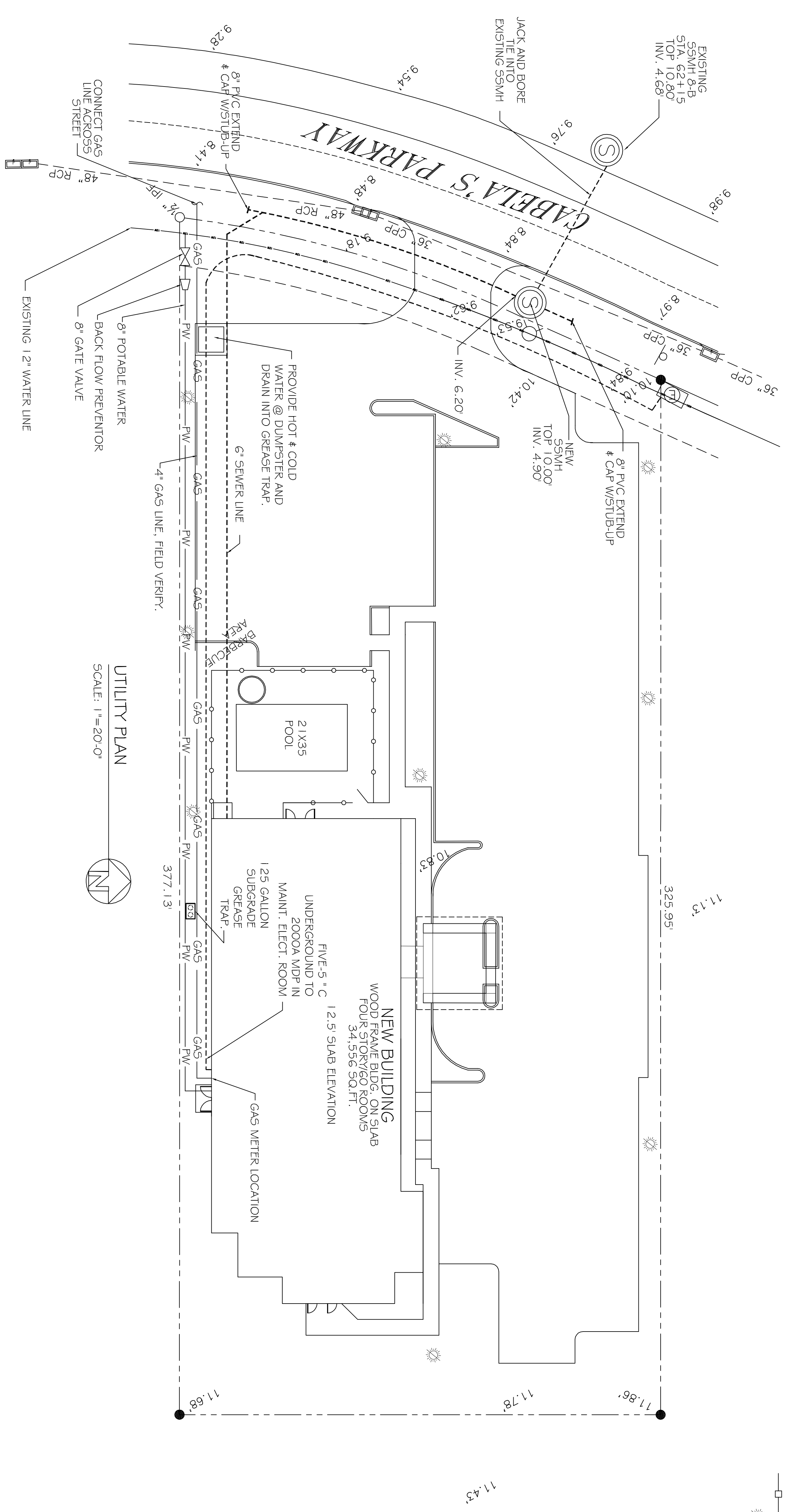
UTILITY  
PLAN

REV: 7-30-12  
SCALE: AS NOTED  
JOB#: 2141  
DATE: 07-03-12  
SHEET 3

C-2

OF 36

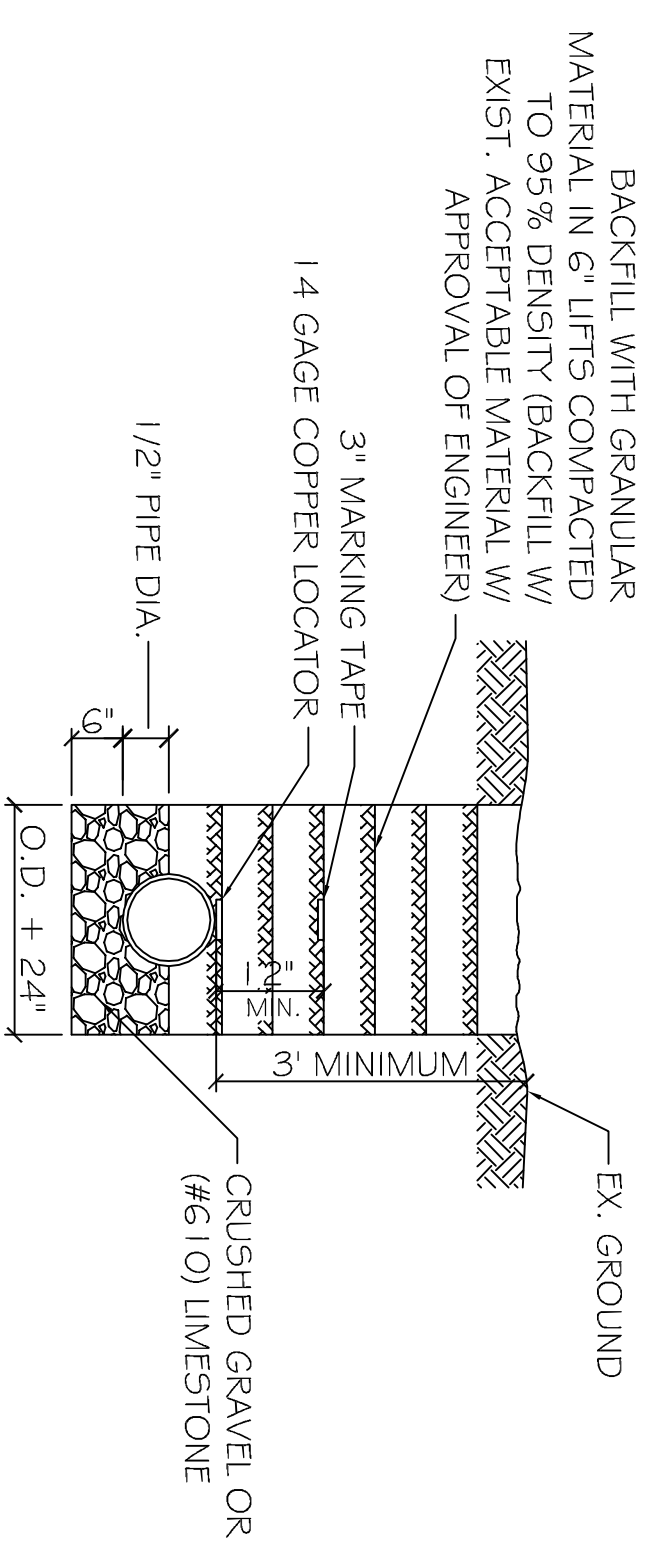
- SITE LEGEND**
- - - PROPERTY LINE
  - - - SETBACK LINE
  - - - BUFFER ZONE LINE
  - - - UTIL. EASEMENT LINE
  - OPAQUE FENCE
  - SITE LIGHTING



UTILITY PLAN  
SCALE: 1"=20'-0"

UTILITIES NOTE: ALL UTILITIES SHALL  
BE PLACED UNDERGROUND.  
ALL UTILITIES ARE  
DRAWN DIAGRAMMATICALLY.

**SITE LIGHTING**  
EXTERIOR LIGHTING SHALL BE SHADED OR INWARDLY DIRECTED IN  
SUCH A MANNER SO THAT NO DIRECT LIGHTING OR GLARE BE CAST  
BEYOND THE PROPERTY LINE. THE INTENSITY OF SUCH LIGHTING  
SHALL NOT EXCEED ONE FOOT CANDLE AS MEASURED AT THE  
ADJUTING PROPERTY LINE. (N/A)



NOTE: A MINIMUM 1'-0" HORZ. AND 18" VERT. SEPARATION  
IS REQUIRED BETWEEN WATER AND SEWER LINES.

PIPE BEDDING DETAIL FOR SEWER AND WATER  
SCALE: N.T.S.