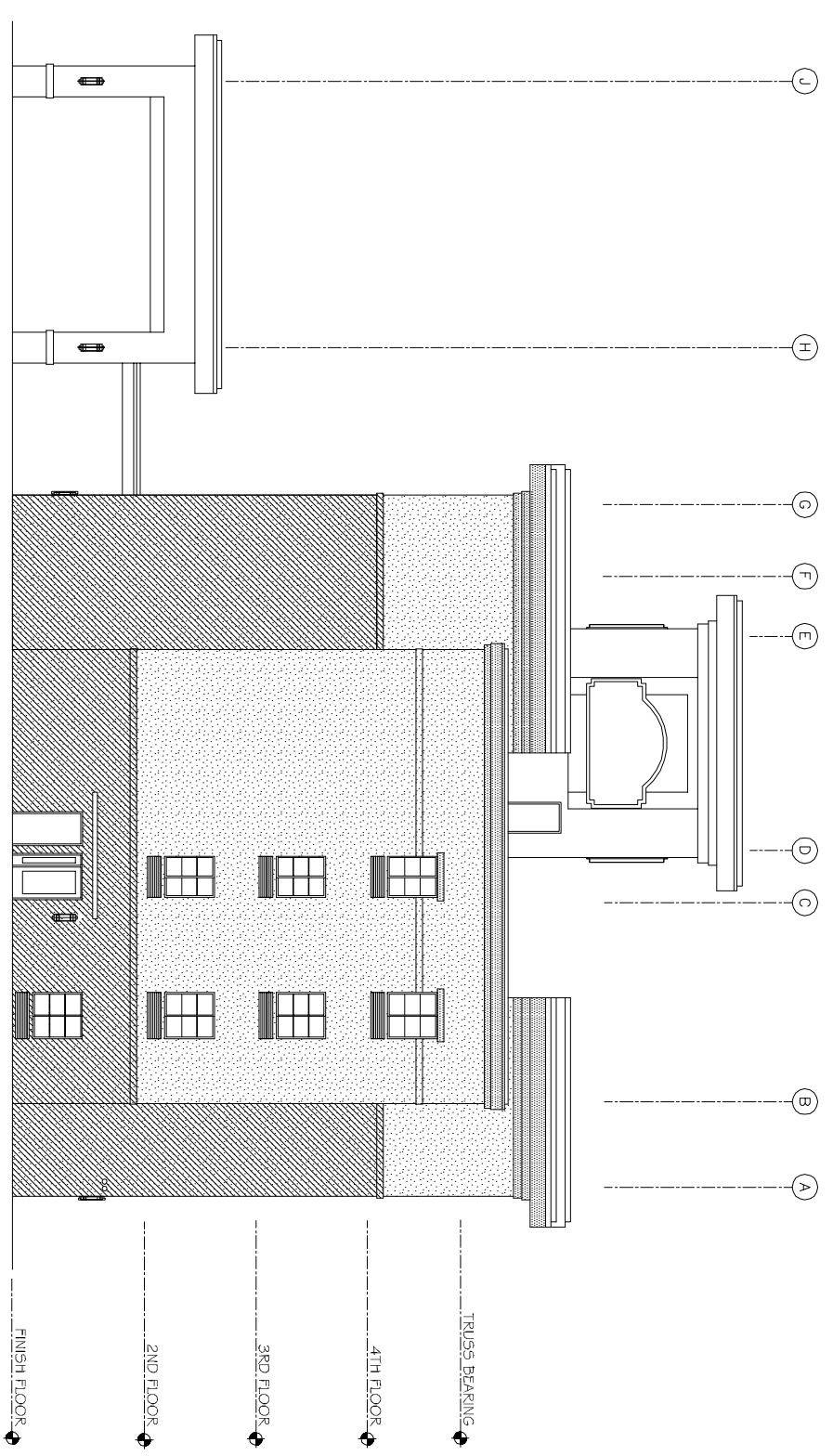


**COLOR SCHEDULE**

(C-1)	EIFS (FINE SAND TEXTURE) SW-6387 - COMPATIBLE CREAM
(C-2)	EIFS (FINE SAND TEXTURE) SW-6374 - TORCHLIGHT
(C-3)	EIFS (LIMESTONE TEXTURE) PAINTED METAL AWNINGS, AND PREFAB. BALCONY SW-0055 - LIGHT FRENCH GRAY
(C-4)	ALUMINUM (WINDOWS, STOREFRONT, & FLAC GRILLS) - WHITE



REVISIONS		DATE
#	DESCRIPTION	

**LAQUINTA INN & SUITES**  
 HATTIESBURG, MISSISSIPPI  
 JOB No: 2158      DATE: 11-26-2012  
 DRAWN BY: JTL      CHECKED BY:

**DAMMON**  
**ENGINEERING INC.**  
*Architects & Engineers*

CHIEF ENGINEER: EMMETT DAMMON, P.E.  
 CHIEF ARCHITECT: ROBERT WILTSE  
 554 OLD SPANISH TRAIL  
 SUDELL, LA 70458

dammoneng@bellsouth.net  
 PHONE: 985-649-5832  
 FAX: 985-641-5950

FRONT &  
 RIGHT SIDE  
 EXTERIOR  
 ELEVATIONS

SHEET No:  
**A-3**