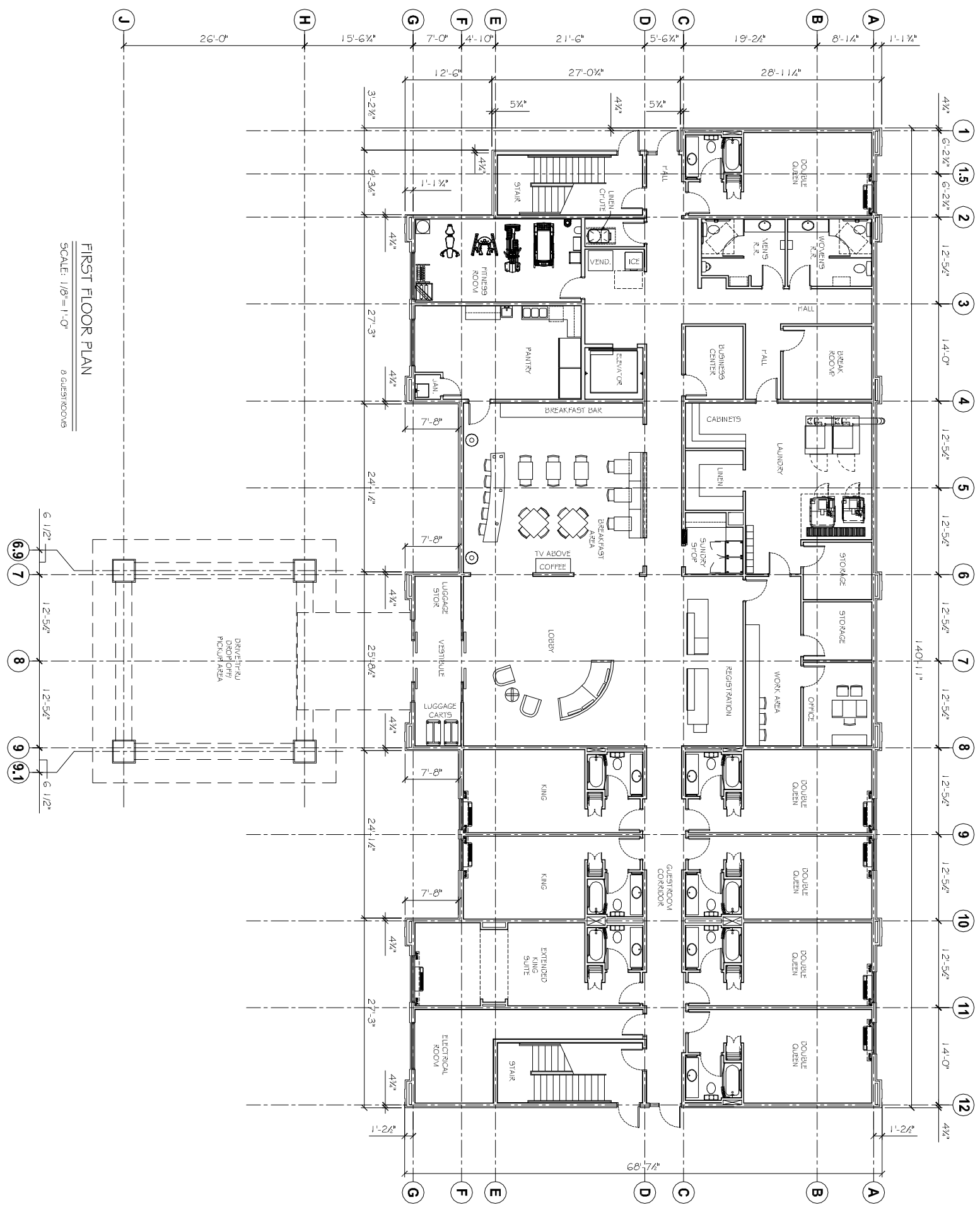


PRELIMINARY (NOT FOR CONSTRUCTION)



FIRST FLOOR PLAN
SCHEME TWO

A 1

REVISIONS	
#	DESCRIPTION

LAQUINTA INNS & SUITES	
HATTIESBURG, MISSISSIPPI	
2158	12-04-2012
JTL	

DAMMON
ENGINEERING, INC.

CHIEF ENGINEER: EMMETT DAMMON, P.E.
554 OLD SPANISH TRAIL
SUDELL, LA 70458

dammonengineering.com
dammoneng@bellsouth.net
PHONE: 985-649-5832
FAX: 985-641-5950

This is a preliminary architectural drawing. It is not intended for construction. It is subject to change without notice. It is not to be used for any purpose other than that for which it was prepared. It is not to be used for any purpose other than that for which it was prepared. It is not to be used for any purpose other than that for which it was prepared.