



FRONT ELEVATION

INTERNATIONAL BUILDING CODE 2012 REQUIREMENTS

OCCUPANCY CLASSIFICATION:
RESIDENTIAL GROUP R-2 (SEC 310.1)

OCCUPANT LOAD: (TBL 1004.1.1)
200 GROSS SQ.FT. / OCCUPANT, SUITES 1-4 FLOORS = 91 OCCUPANTS

EXIT ACCESS REQUIREMENTS: (SEC 1019.2)
2 EXITS REQUIRED FOR > 50 OCCUPANTS (TBL 1015.1) 1 EXIT PER SUITE PROVIDED.
MAXIMUM COMMON PATH OF EGRESS TRAVEL= 250' (TBL 1016.1)

ALLOWABLE HEIGHT AND BLDG. AREA: (TBL 503)
12,000 SQ.FT. / 3 STORY
AUTOMATIC SPRINKLER SYSTEM INCREASE, MAXIMUM NUMBER OF STORIES IS INCREASED BY ONE, (SEC 504.2) AUTOMATIC SPRINKLER SYSTEM INCREASE, 200% INCREASE ALLOWED FOR BUILDINGS WITH MORE THAN ONE STORY ABOVE GRADE PLANE, (SEC. 506.3) ADJUSTED ALLOWABLE AREA = 24,000 SQ. FT. PER STORY/4 STORY
THIS BUILDING 8,927 SQ.FT. FIRST FLOOR / 8,543 SQ.FT. SECOND-FOURTH FLOOR.

CONSTRUCTION CLASSIFICATION: (SEC 602.5)
TYPE V A

FIRE RESISTANCE RATING REQUIREMENTS FOR BLDG. ELEMENTS: (TBL 601)
STRUCTURAL FRAME= 1 HRS.
BEARING WALLS (INTERIOR AND EXTERIOR)= 1 HRS.
NONBEARING WALLS= 0 HRS.
FLOOR CONSTRUCTION= 1 HRS.
ROOF CONSTRUCTION= 0 HRS.

FIRE RESISTANCE RATING REQUIREMENTS FOR EXTERIOR WALLS: (TBL 602)
EXTERIOR WALLS WITH >= 30' FIRE SEPARATION DISTANCE= 0 HRS.

MAX. AREA OF EXTERIOR WALL OPENINGS: (TBL 705.8)
BLDG5. WITH >= 30' FIRE SEPARATION DISTANCE ALLOWED UNLIMITED PROTECTED AND UNPROTECTED OPENINGS

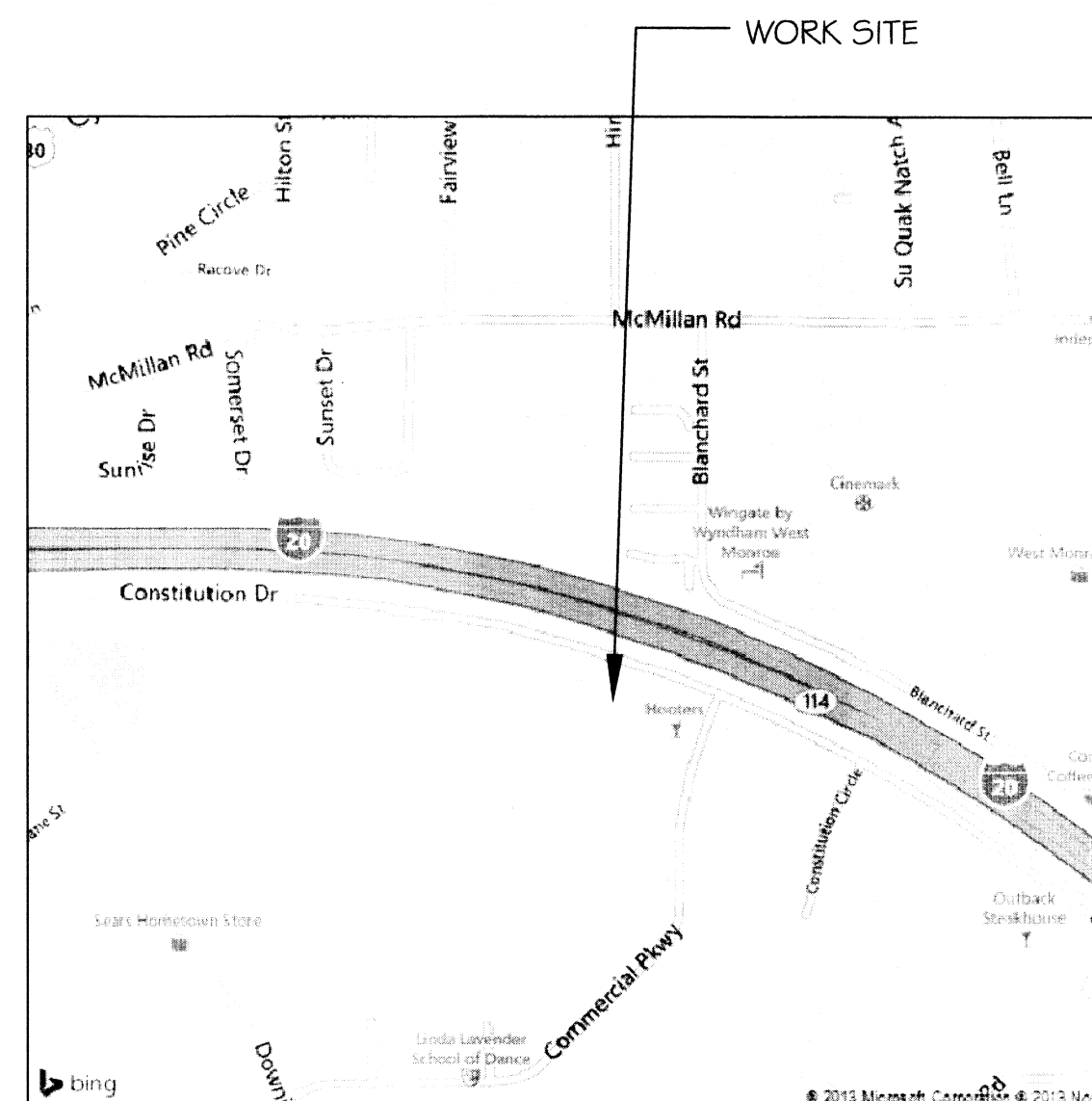
FIRE PROTECTION SYSTEM REQUIREMENTS: (SEC 907)
THIS BLDG. SHALL BE EQUIPPED WITH AN AUTOMATIC SPRINKLER SYSTEM IN COMPLIANCE WITH NFPA 13.
THIS BLDG. SHALL BE PROVIDED WITH AN APPROVED FIRE PROTECTION SYSTEM IN ACCORDANCE WITH SEC 907.2.9

CONSTRUCTION DOCUMENTS: (SEC 1603)
THIS BLDG. SHALL BE DESIGNED IN ACCORDANCE WITH IBC SECTION 1609 AS A FULLY ENCLOSED BLDG., WITH AN INTERNAL PRESSURE COEFFICIENT OF + OR - 0.18 (ASCE 7-05 FIGURE 6-5), AND USING THE FOLLOWING INFORMATION:
BASIC WIND SPEED (3 SECOND GUSTS)= 90 MPH (FIG 1609)
IMPORTANCE FACTOR: CATEGORY III BUILDING., IE = 1.00, IS = 1.0, IW = 1.00 (TBL 1604.5)
EXPOSURE B, DETERMINATION OF WIND LOADS SHALL BE IN ACCORDANCE WITH IBC SEC 1609.4
LIVE LOADS TBL 1607.1 OFFICE BUILDINGS
CORRIDORS ABOVE FIRST FLOOR = 80PSF
FILE AND COMPUTER ROOMS SHALL BE DESIGNED FOR HEAVIER LOADS BASED ON ANTICIPATED OCCUPANCY
LOBBIES AND FIRST FLOOR CORRIDORS = 100PSF
OFFICES = 50 PSF
GROUND SNOW LOADS = 5 PSF (FIG. 1608.2)

UNIFORM LIVE LOADS TABLE 607.1
HOTELS & MULTIPLE FAMILY DWELLINGS: PRIVATE ROOMS & CORRIDORS SERVING THEM: 40 PSF,
PUBLIC ROOMS & CORRIDORS SERVING THEM: 100 PSF, ROOFS: 20 PSF, 300 LB CONCENTRATED



4 STORY BUILDING
FULLY SPRINKLED
PER NFPA 13
TOTAL SQ. FT. 46,860



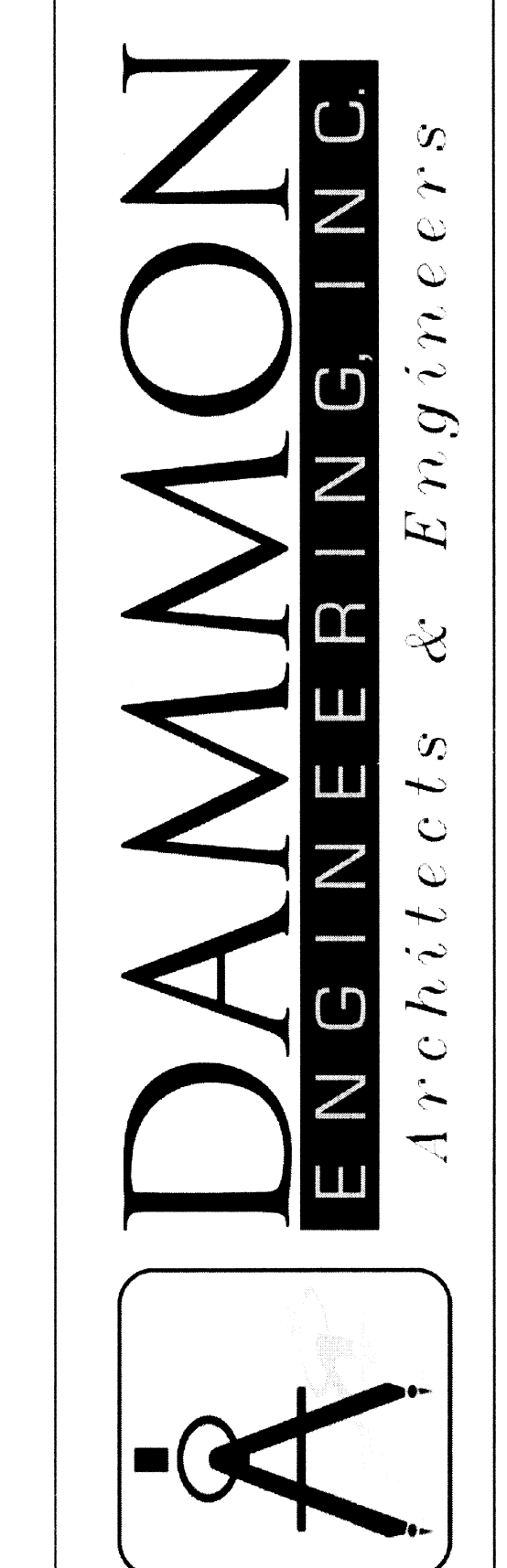
VICINITY MAP
N.T.S.

LAQUINTA INNS & SUITES

507 CONSTITUTION DRIVE
WEST MONROE, LOUISIANA 71292
ZONED B-3
GENERAL BUSINESS DISTRICT

INDEX OF DRAWINGS				INDEX OF DRAWINGS (CONT.)			
SHT#	DWG#	DRAWING NAME	REVISED	SHT#	DWG#	DRAWING NAME	REVISED
1		COVERSHEET		28	A-20	ENLARGED PUBLIC RESTROOMS PLAN & DETAILS	
2	C-1	SITE PLAN		29	A-21	ENLARGED REGISTRATION AREA PLAN	
3	C-2	SITE UTILITY PLAN		30	A-22	REGISTRATION DESK MILLWORK DETAILS	
4	C-3	SITE PAVING PLAN		31	A-23	ENLARGED SUNDRY SHOP PLAN & DETAILS	
5	C-4	SITE DRAINAGE PLAN		32	A-24	ENLARGED BREAKFAST AREA PLAN & DETAILS	
6	C-5	SITE LANDSCAPING PLAN		33	A-25	BREAKFAST BAR DETAILS	
7	C-6	SILT FENCE DETAILS		34	A-26	DOUBLE QUEEN SUITE DETAILS	
8	S-1	FOUNDATION PLAN		35	A-27	DOUBLE QUEEN ACC. R.I.S. SUITE DETAILS	
9	A-1	FIRST FLOOR PLAN		36	A-28	2-ROOM ACC SUITE DETAILS	
10	A-2	2ND & 3RD FLOOR PLANS		37	A-29	KING SUITE DETAILS	
11	A-3	4TH FLOOR PLAN		38	A-30	EXTENDED KING SUITE DETAILS	
12	A-4	REFLECTED CEILING PLANS		39	A-31	KING ACC. SUITE DETAILS	
13	A-5	CEILING DETAILS SHEET		40	A-32	ENLARGED GUESTROOM BATH PLANS	
14	A-6	ROOF PLAN		41	A-33	GUESTROOM BATH ELEVATIONS	
15	A-7	FRONT AND REAR ELEVATIONS		42	A-34	GUESTROOM BATH ELEVATIONS	
16	A-8	LEFT AND RIGHT ELEVATIONS		43	A-35	PUBLIC AREA INTERIOR ELEVATIONS	
17	A-9	EXTERIOR BUILDING DETAILS		44	A-36	PUBLIC AREA INTERIOR ELEVATIONS	
18	A-10	STRAPPING DETAILS		45	M-1	1ST FLOOR MECHANICAL PLAN	
19	A-11	SECTION THRU PORTE COCHERE/DROP OFF		46	M-2	2ND, 3RD, & 4TH FLR. MECHANICAL PLANS	
20	A-12	BUILDING SECTIONS		47	E-1	1ST FLOOR ELECTRICAL PLANS	
21	A-13	BUILDING SECTIONS		48	E-2	2ND, 3RD, & 4TH FLR ELECTRICAL PLANS	
22	A-14	WALL SECTIONS		49	E-3	ELECTRICAL SYMBOLS & LIGHTING LEGENDS	
23	A-15	WALL SECTIONS		50	E-4	PANEL SCHEDULES	
24	A-16	WALL SECTIONS & PARTITION TYPES		51	E-5	PANEL SCHEDULES	
25	A-17	DOOR AND WINDOW SCHEDULES		52	P-1	PLUMBING PLANS	
26	A-18	FINISH SCHEDULE		53	P-2	PLUMBING RISERS, SCHEDULES, & DETAILS	
27	A-19	ENLARGED PUBLIC AREA PLAN					

CHIEF ENGINEER: BRIAN MISTICH, P.E.
CHIEF ARCHITECT: KEVIN KINCHEN
554 OLD SPANISH TRAIL
SUDELL, LA 70456
www.dammonengineering.com
dammoneng@bellsouth.net
PHONE: 985-641-9352
FAX: 985-641-9350



LAQUINTA INNS & SUITES
507 CONSTITUTION DRIVE
WEST MONROE, LOUISIANA 71292
JOB No: 2196 DATE: 02-03-2014
DRAWN BY: JTL CHECKED BY: CKD

