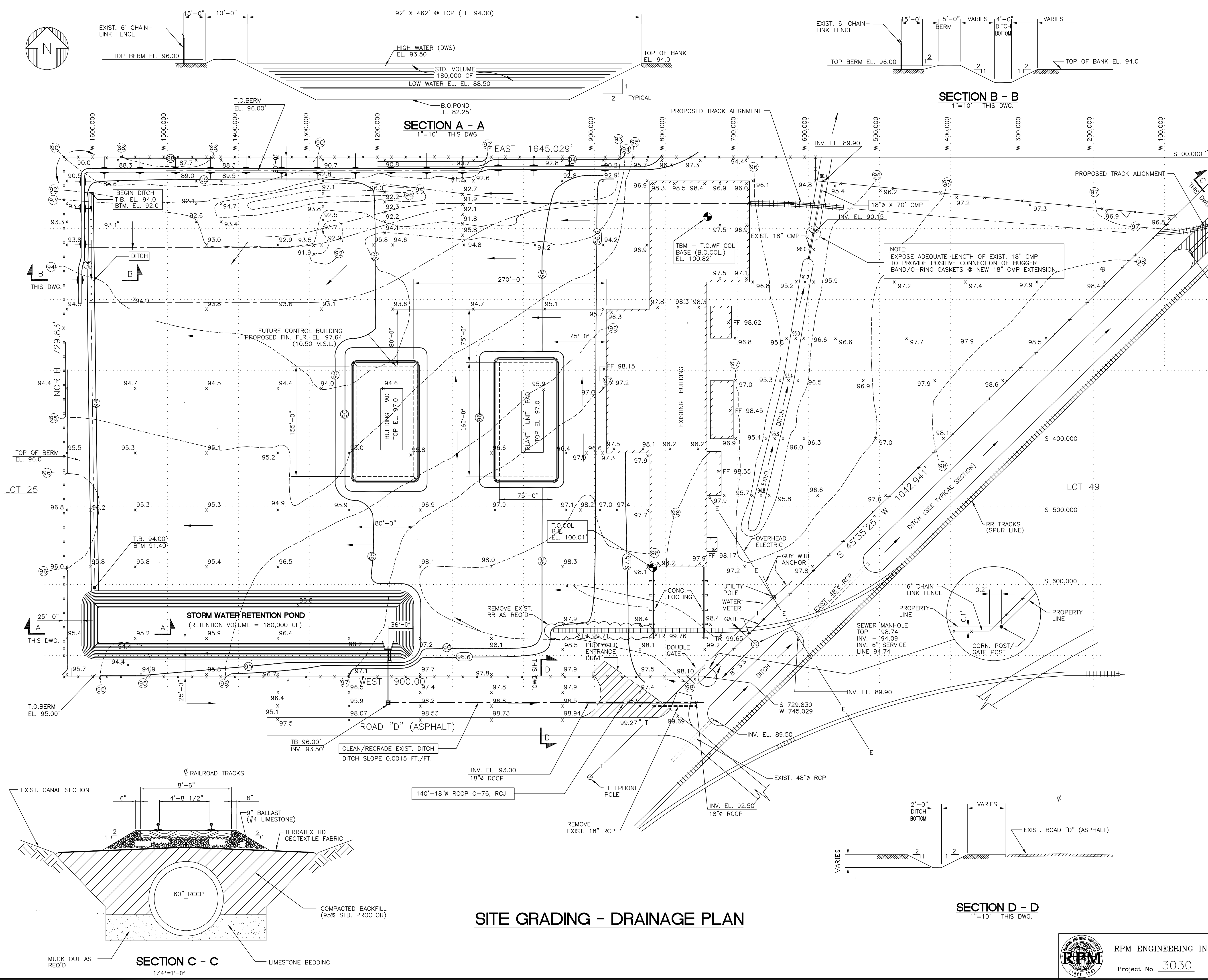
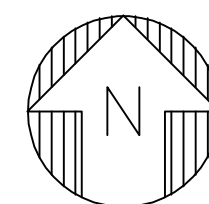


REFERENCE DRAWINGS

DRAWING NO.	DESCRIPTION
3030-C-100	DRAWING INDEX & GENERAL NOTES



SECTION B - B
1"=10' THIS DWG.

SECTION A - A
1"=10' THIS DWG.

SECTION C - C
1/4"=1'-0"

SECTION D - D
1"=10' THIS DWG.

- NOTE:
- ALL ELEVATIONS BASED ON PLANT DATUM; TO CONVERT TO MEAN SEA LEVEL (M.S.L.) DATUM SUBTRACT 87.14 FEET. (BASED ON PLANS OF EXISTING BUILDING).
 - FOR BENCHMARK ELEVATIONS AND DESCRIPTION SEE DWG. C-101.
 - ON-SITE SOILS MAY BE USED FOR BACKFILL PROVIDED IT IS FREED OF ALL TRASH, ROOTS AND OTHER DELETERIOUS MATTER.
 - COMPACTION TESTS WILL BE REQUIRED. TESTING LABORATORY TO BE EMPLOYED AND PAID FOR BY OWNER.
 - SEE DRAINAGE PLAN (SHT 3030-C-104).

LEGEND

DWS	- DESIGNED WATER SURFACE
[Hatched Box]	- EXISTING BUILDINGS
x 96.6	- EXISTING GRADE ELEVATIONS
92	- FINISH GRADE CONTOURS
→	- DRAINAGE FLOW DIRECTION
→	- PROPOSED DITCH EXCAVATION

REV.	DATE	DESCRIPTION	DRN.	CKD.	APD.	APD.
0	3/98	ISSUED FOR CONSTRUCTION	WAB	PDW		
DESIGNED	PDW	3/98	APPROVED			
DRAWN	WAB	3/98	APPROVED			
CHECKED			APPROVED			

SNF S.A.
[Polychemie, Inc.]
 Port Bienville, Mississippi

PRP-7
 DADMAC MANUFACTURING FACILITY
 CIVIL
 SITE GRADING PLAN



RPM ENGINEERING INC.
 Project No. 3030

SCALE	DATE OF ISSUE	CONTRACT NO.	DRAWING NO.	REV.
1"=60'-0"	3/18/98	3030	3030-C-102	0