

STIPULATION FOR REUSE
THIS DRAWING IS PREPARED FOR
USE ON A SPECIFIC PROJECT AT
THE LOCATION AND DATE SPECIFIED.
IT IS NOT TO BE REUSED OR
REPRODUCED FOR ANY OTHER
PROJECT, SITE, OR DATE WITHOUT
THE WRITTEN PERMISSION OF THE
ENGINEER OR ARCHITECT. ANY
REUSE OF THIS PROJECT IS NOT
PERMITTED AND MAY BE CONSIDERED
AS A VIOLATION OF THE LAW.

Loves
STORE NUMBER: 860
I-59, EXIT 1
NICHOLSON, MS 39463
JOB NUMBER: 03-22-30003

ISSUE BLOCK

CHECKED BY: LST

DRAWN BY: CRM

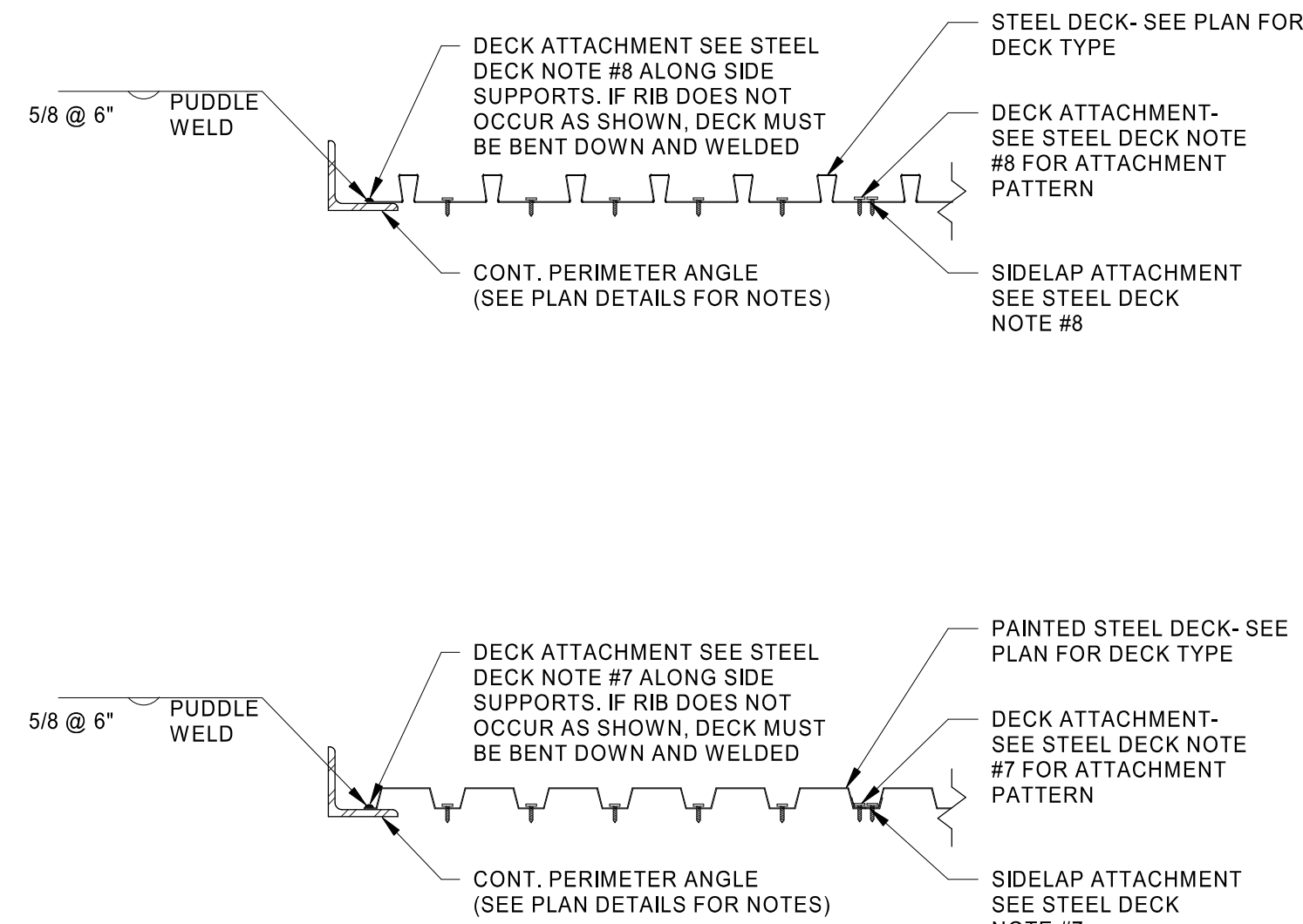
DOCUMENT DATE: 02/06/23



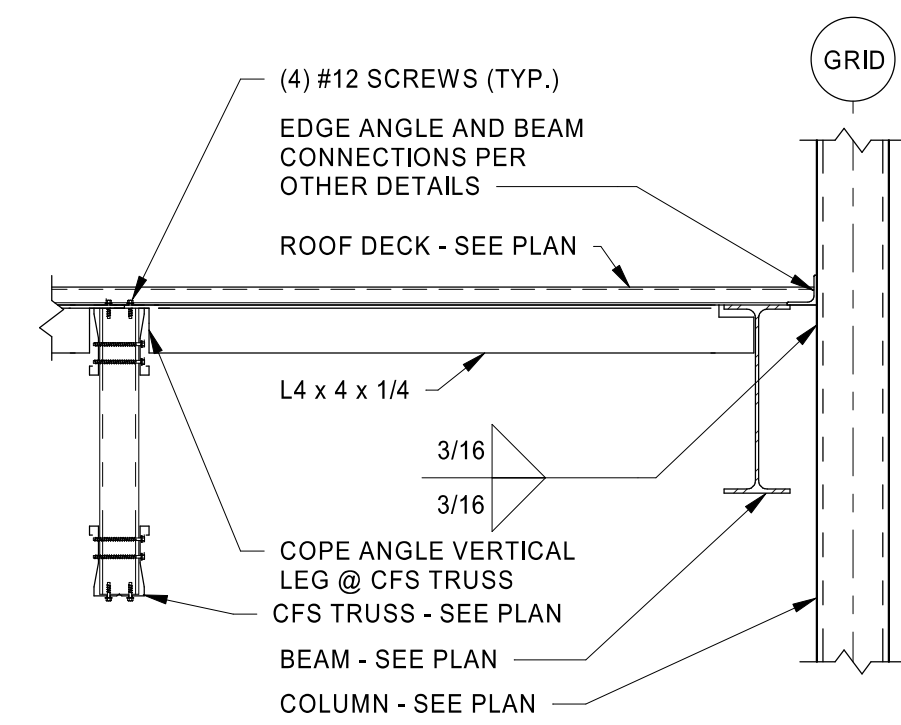
2023.02.06 14:07:50-06'00'

FRAMING DETAILS

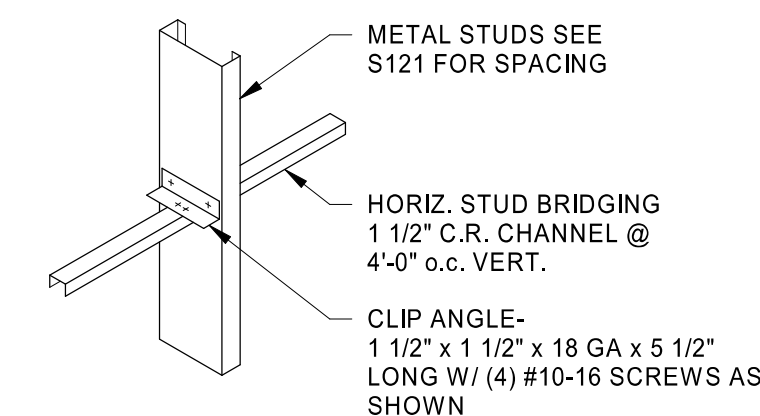
SHEET: S511



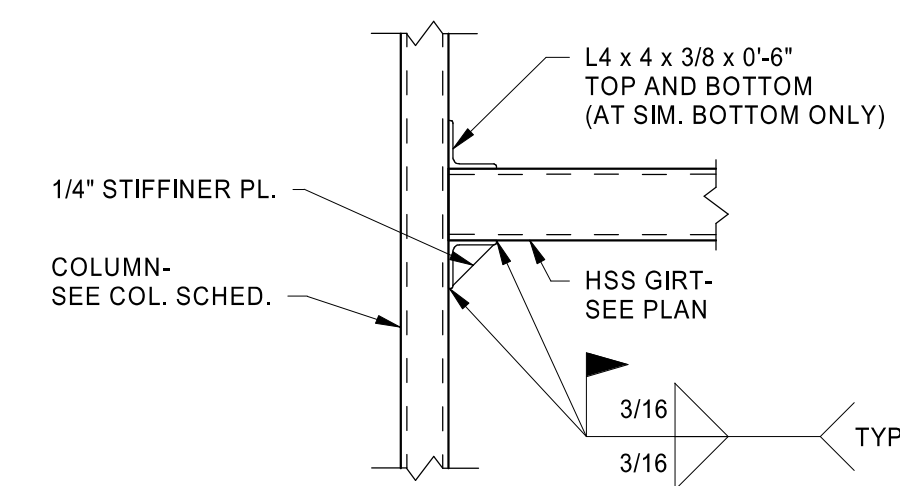
10 TYP. ROOF DECK FASTENING PATTERN DETAIL
NOT TO SCALE



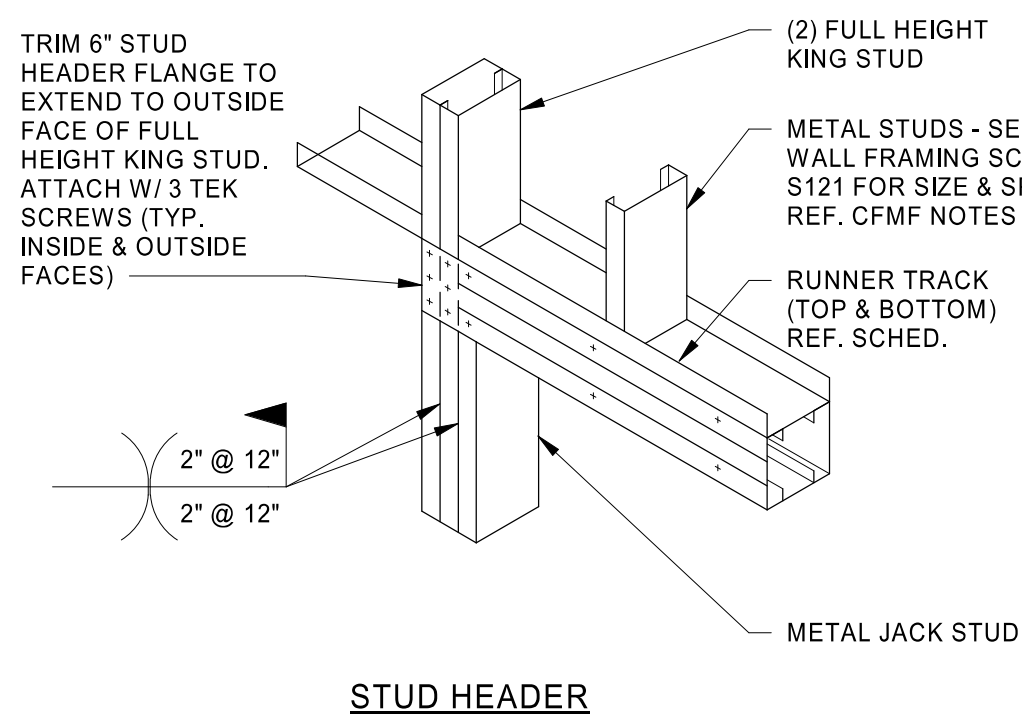
9 COLUMN BRACE
3/4" = 1'-0"



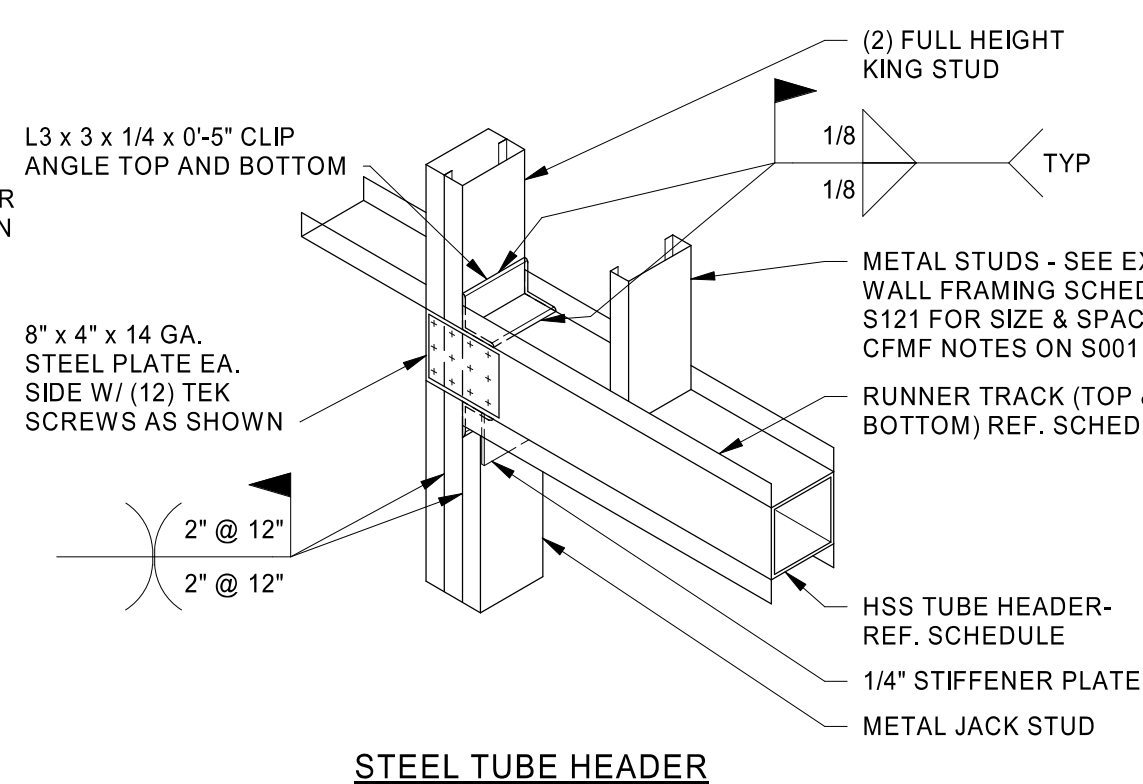
8 STUD BRIDGING DETAIL
3/4" = 1'-0"



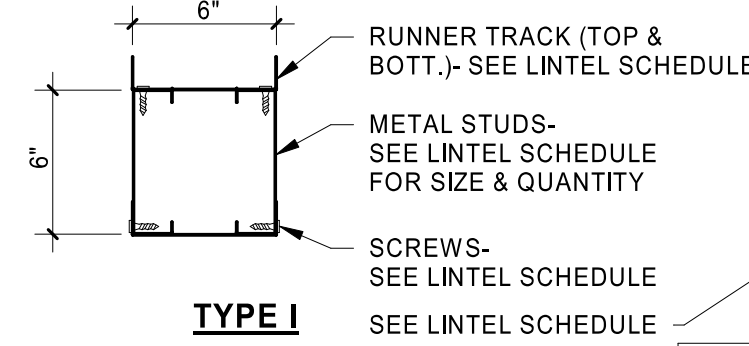
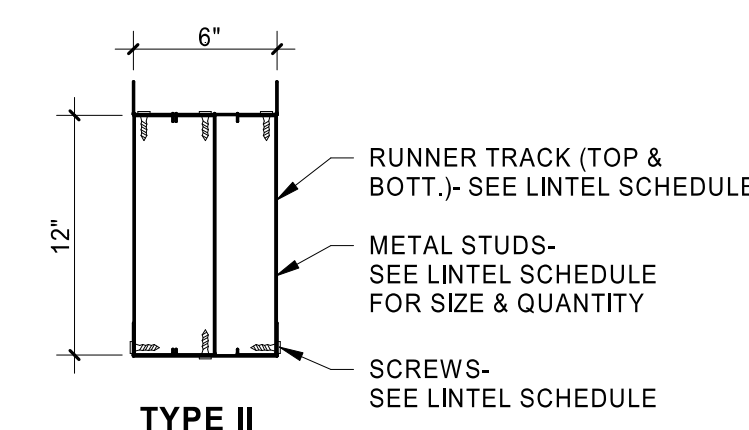
7 GIRT CONNECTION DETAIL
3/4" = 1'-0"



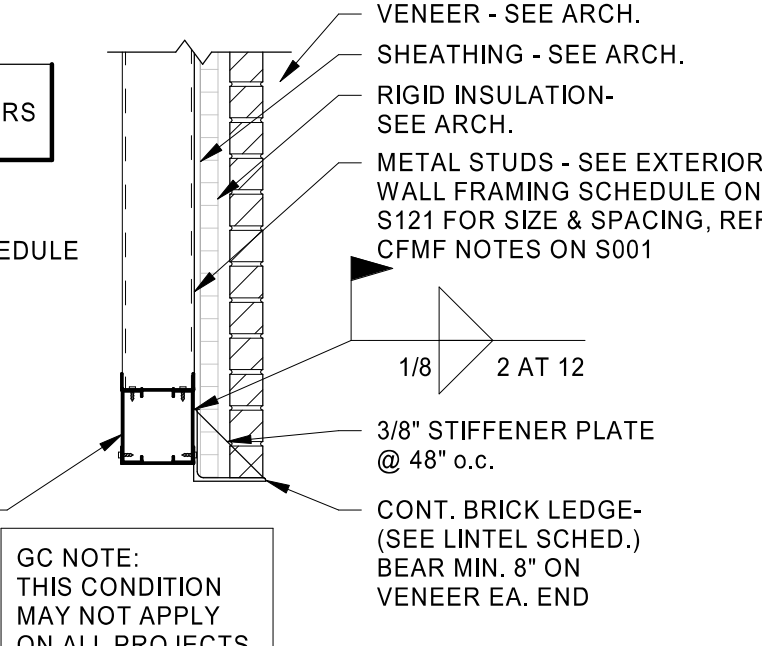
6 STUD HEADER
3/4" = 1'-0"



5 LINTEL DETAILS
3/4" = 1'-0"

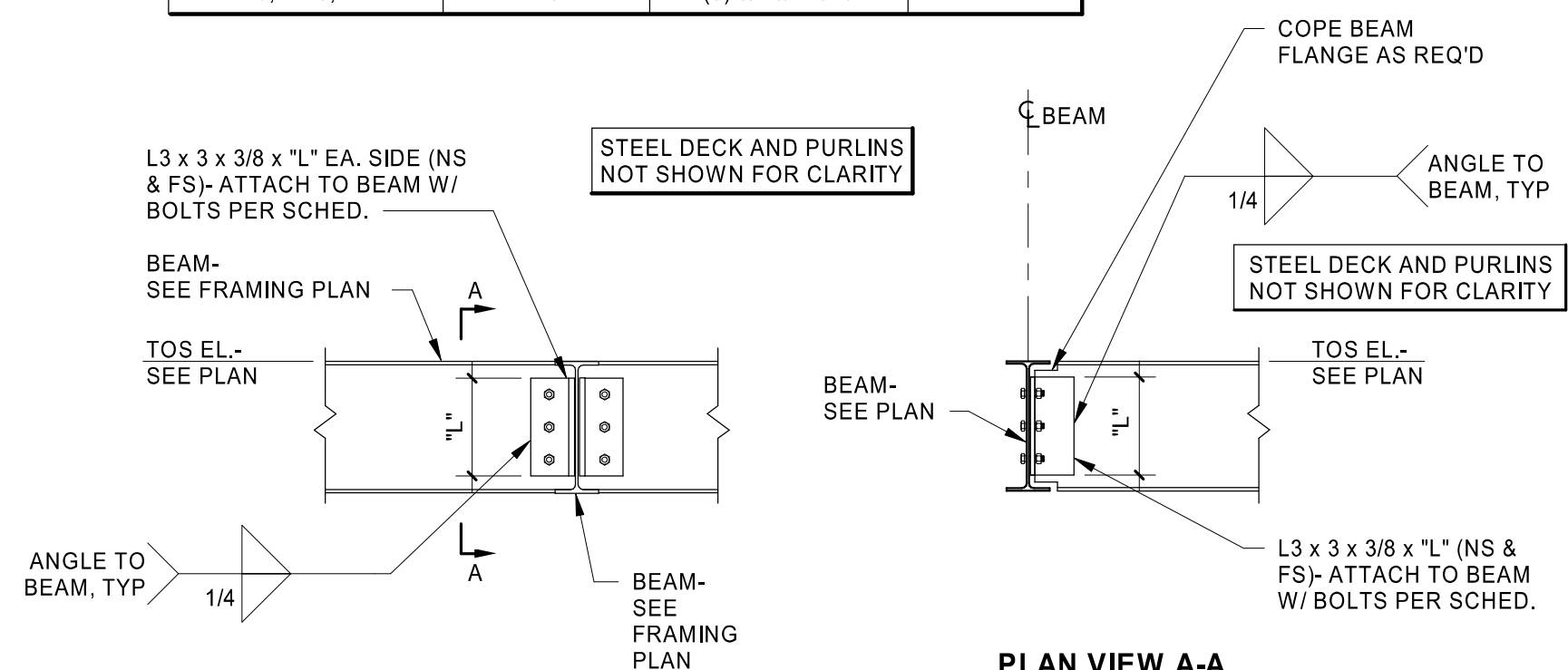


NOTE: PROVIDE WEB STIFFENERS AT BEARING POINTS

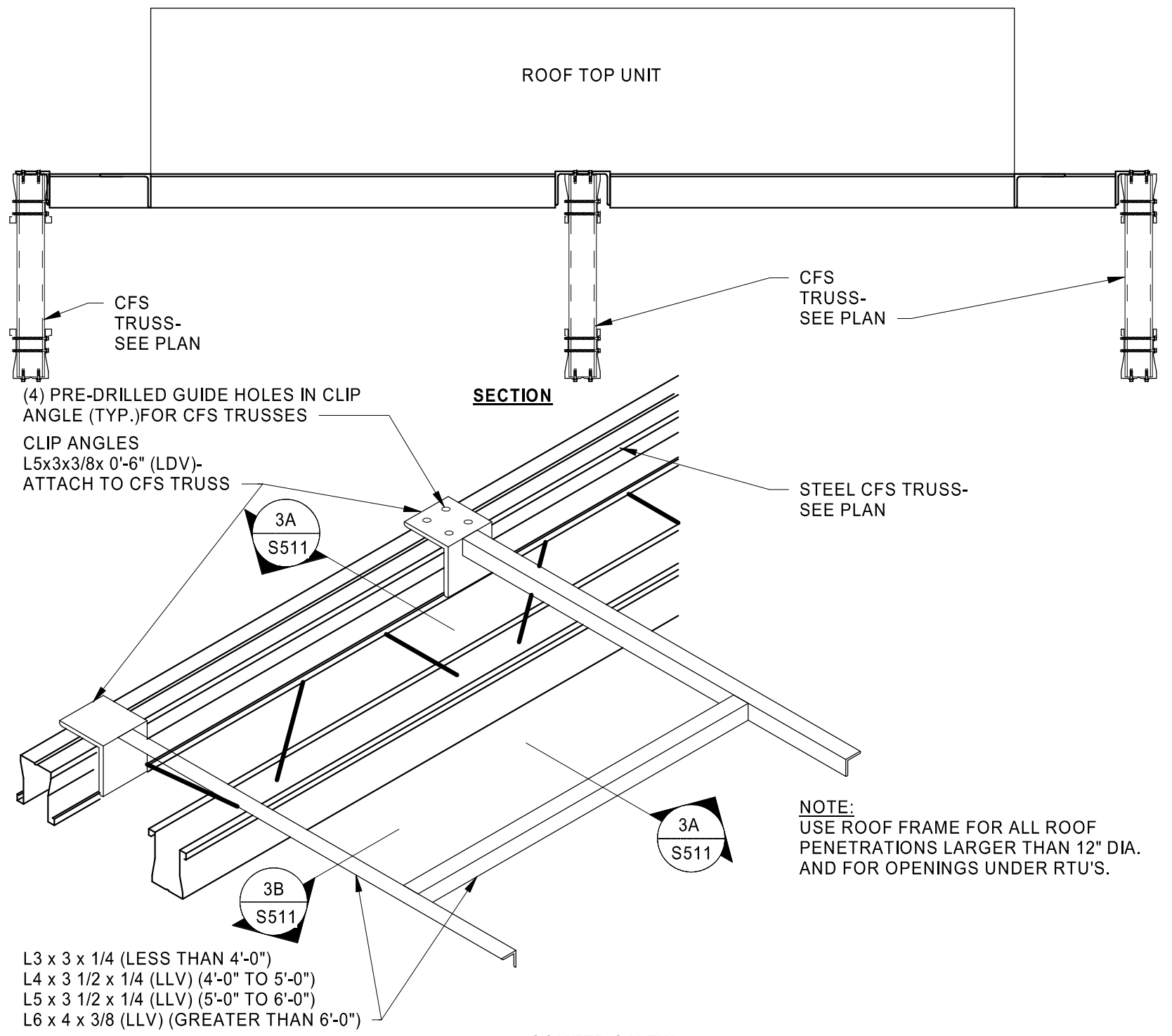


2 TYP. MISC. BEAM TO HSS COLUMN CONNECTION DETAIL
NOT TO SCALE

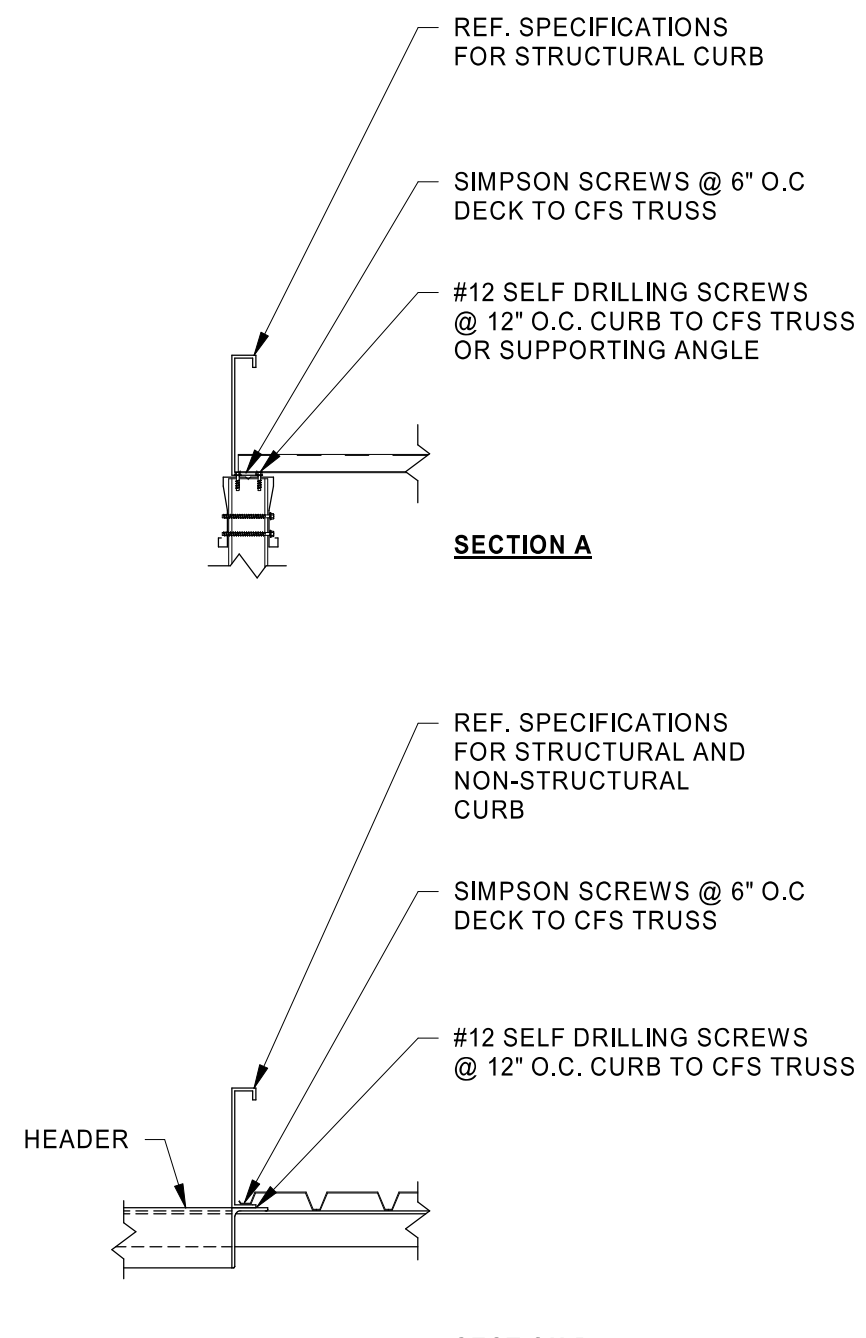
| BEAMS AND BOLTS SCHEDULE | | | |
|--------------------------|------------------|-----------------|---------|
| SUPPORTED BEAM SIZE | ANGLE LENGTH (L) | NUMBER OF BOLTS | REMARKS |
| W8, W10, C8, C10 | 6" | (4) 3/4"Ø A325 | ---- |
| W12, W14, C12, MC12 | 9" | (6) 3/4"Ø A325 | ---- |
| W16, W18, W21 | 1'-0" | (8) 3/4"Ø A325 | ---- |



4 TYP. BEAM TO BEAM CONN. DETAIL
3/4" = 1'-0"

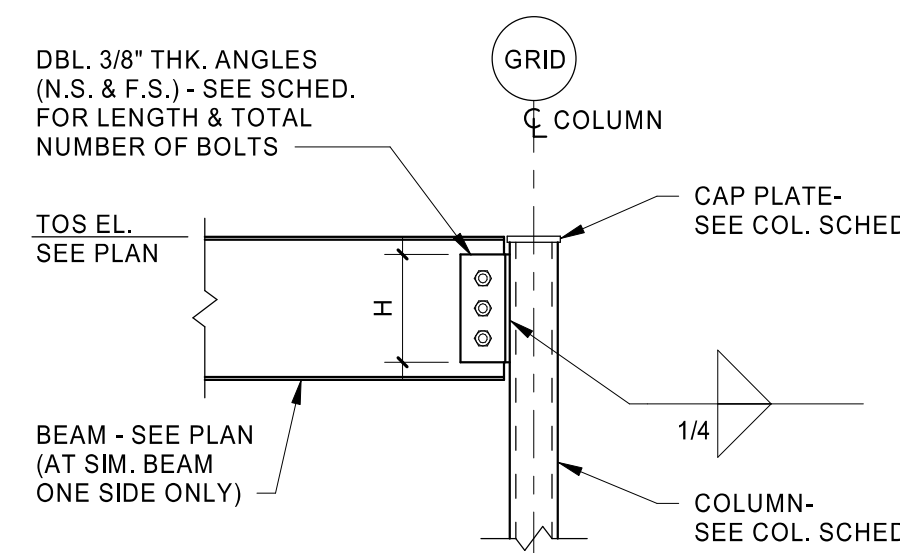


3 DETAIL AT ROOF TOP UNITS
NOT TO SCALE

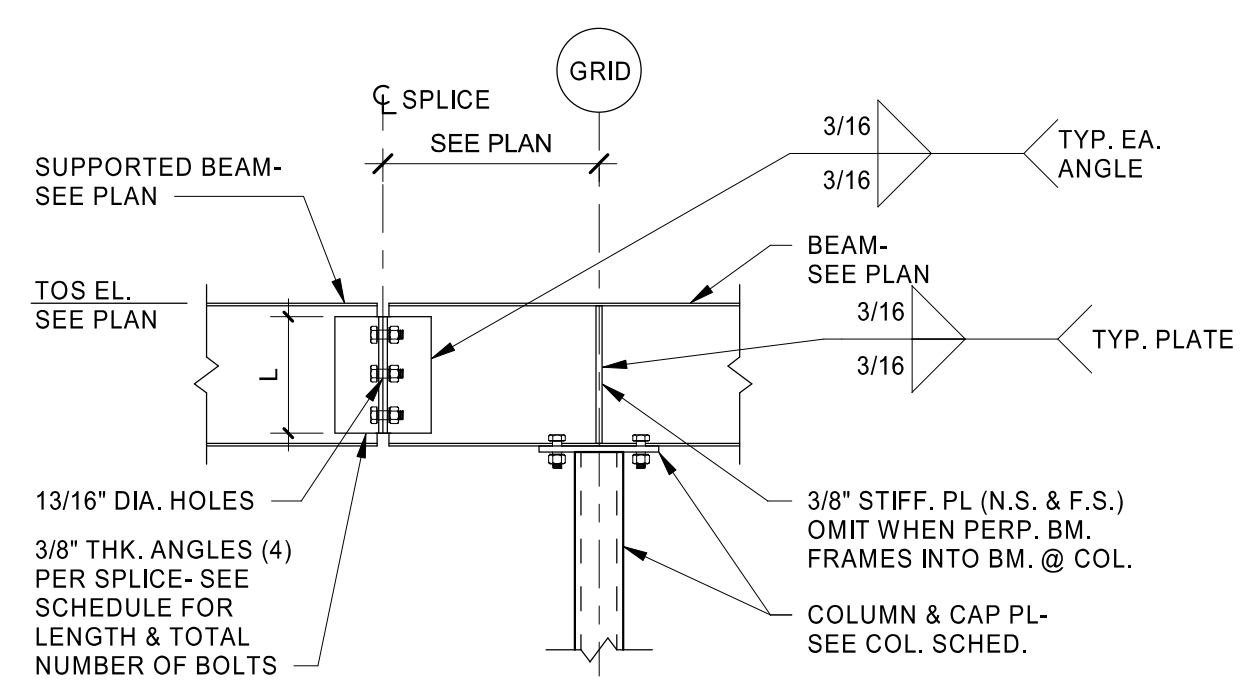


| MISC. BEAM TO HSS COLUMN CONNECTION SCHEDULE | | | |
|--|----------------|-----------------|---------|
| BEAM SIZE | TEE HEIGHT (H) | NUMBER OF BOLTS | REMARKS |
| W8, W10 | 6" | (2) 3/4"Ø A325 | ---- |
| W12, W14 | 9" | (3) 3/4"Ø A325 | ---- |
| W16, W18 | 1'-0" | (4) 3/4"Ø A325 | ---- |
| W21, W24 | 1'-3" | (5) 3/4"Ø A325 | ---- |

MISC. BEAM TO HSS COLUMN CONNECTION SCHEDULE NOTES:
1. TYPICAL BEAM TO COL. CONNECTION IS WITH CAP PLATE..



| CANTILEVERED BEAM SPLICE PLATE SCHEDULE | | | |
|---|------------------|-----------------|---------|
| SUPPORTED BEAM SIZE | ANGLE LENGTH (L) | NUMBER OF BOLTS | REMARKS |
| W8, W10 | 6" | (4) 3/4"Ø A325 | ---- |
| W12, W14 | 9" | (6) 3/4"Ø A325 | ---- |
| W16, W18 | 1'-0" | (8) 3/4"Ø A325 | ---- |
| W21, W24 | 1'-3" | (10) 3/4"Ø A325 | ---- |



1 TYP. CANTILEVERED BEAM SPLICE DETAIL
NOT TO SCALE