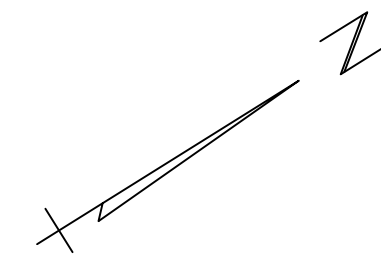


**CASTELLANO DIVISION
WEST POINT A LA HACHE
SECTION 3 & 4, T17S, R26E
SOUTHEAST DISTRICT OF LOUISIANA
WEST OF THE MISSISSIPPI RIVER
PLAQUEMINES PARISH, LA**



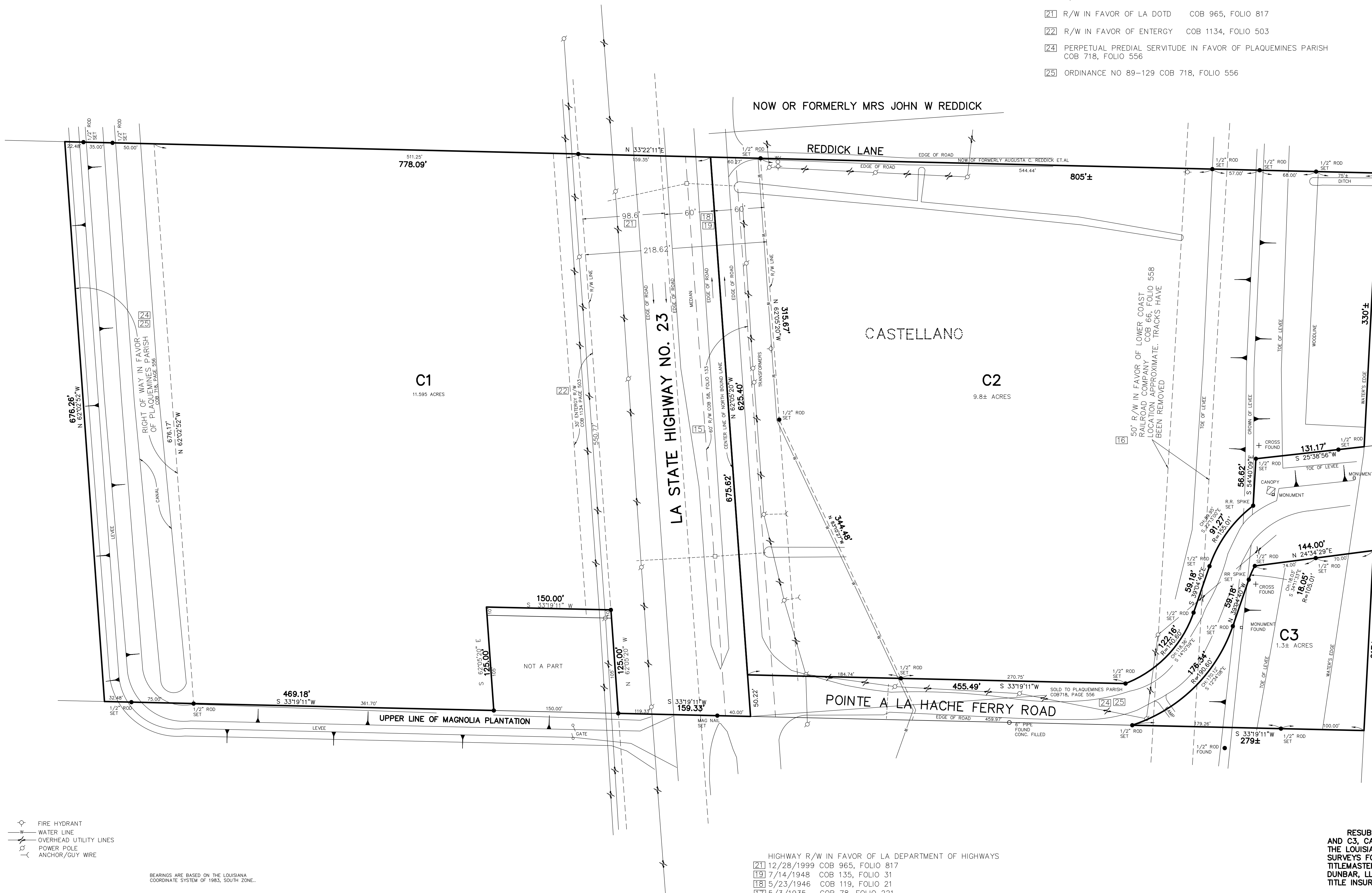
FIDELITY NATIONAL TITLE INSURANCE COMPANY
COMMITMENT NO. F-7715 MAY 28, 2015
SCHEDULE B, - SECTION II

- [15] R/W FOR HIGHWAY COB 58, FOLIO 133
- [16] R/W FOR LOWER COAST RAILROAD CO. COB 66, FOLIO 558
- [17] R/W IN FAVOR OF LA HIGHWAY COMMISSION COB 78, FOLIO 201
- [18] R/W IN FAVOR OF LA DEPT OF HIGHWAYS COB 119, FOLIO 21
- [19] R/W IN FAVOR OF LA DEPT OF HIGHWAYS COB 135 FOLIO 31
- [20] R/W IN FAVOR OF LA POWER & LIGHT CO COB 321, FOLIO 855
- [21] R/W IN FAVOR OF LA DOTD COB 965, FOLIO 817
- [22] R/W IN FAVOR OF ENTERGY COB 1134, FOLIO 503
- [24] PERPETUAL PREDIAL SERVITUDE IN FAVOR OF PLAQUEMINES PARISH COB 718, FOLIO 556
- [25] ORDINANCE NO 89-129 COB 718, FOLIO 556

I hereby certify that the division shown hereon is approved pursuant to the provisions of Plaquemines Parish Council Ordinance NO. 96-41, (Code of Ordinances Section 20-3-B-(3))

Plaquemines Parish Government
Dept. of Planning & Zoning

By: _____
Superintendent



MISSISSIPPI RIVER

REVISED AUGUST 5, 2015

JUNE 25, 2015

RESUBDIVISION OF CASTELLANO PROPERTY, INTO LOTS C1, C2 AND C3, CASTELLANO DIVISION. SURVEYED IN ACCORDANCE WITH THE LOUISIANA STANDARDS OF PRACTICE FOR BOUNDARY SURVEYS FOR A CLASS C SURVEY, MADE AT THE REQUEST OF TITLEMASTERS INC., PIVACH, PIVACH, HUFFT, THRIFFLEY & DUNBAR, LLC, PORT SHIP SERVICE, INC. AND FIDELITY NATIONAL TITLE INSURANCE COMPANY.

- HIGHWAY R/W IN FAVOR OF LA DEPARTMENT OF HIGHWAYS
- [21] 12/28/1999 COB 965, FOLIO 817
- [19] 7/14/1948 COB 135, FOLIO 31
- [18] 5/23/1946 COB 119, FOLIO 21
- [17] 5/3/1935 COB 78, FOLIO 221
- [15] 11/20/1922 COB 58, FOLIO 133 (PLAQUEMINES PARISH)

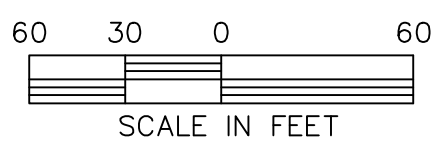
[20] LP&L R/W COB 321 PAGE 855
FOR POLES ON SOUTH SIDE OF HWY R/W IN 1968. THIS AREA IS NOW WITHIN LIMITS OF SOUTH BOUND PAVEMENT

BEARINGS ARE BASED ON THE LOUISIANA COORDINATE SYSTEM OF 1983, SOUTH ZONE.

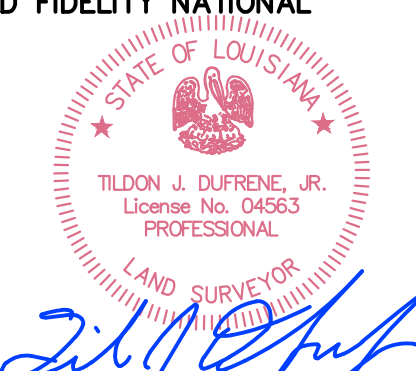
REFERENCE: SURVEY BY DUFFRENE SURVEYING & ENGINEERING, INC. DATED OCTOBER 29, 2013
SURVEY BY HUGH MCCURDY JR DATED OCTOBER 14, 1983

THE SERVITUDES AND RESTRICTIONS SHOWN ON THIS SURVEY ARE LIMITED TO THOSE SET FORTH IN THE DESCRIPTION FURNISHED US AND THERE IS NO REPRESENTATION THAT ALL APPLICABLE SERVITUDES AND RESTRICTIONS ARE SHOWN HEREON. THE SURVEYOR HAS MADE NO TITLE SEARCH OR PUBLIC RECORD SEARCH IN COMPILING THE DATA FOR THIS SURVEY.

- FIRE HYDRANT
- WATER LINE
- OVERHEAD UTILITY LINES
- POWER POLE
- ANCHOR/GUY WIRE



DUFFRENE SURVEYING & ENGINEERING INC.
1624 MANHATTAN BOULEVARD, HARVEY, LA 70058
504-368-8390 PH
504-368-8394 FAX
duffrene@duffrenesurveying.com



Tildon J. Duffrene, Jr.
T-5099-L
15-000463 plq\west point to hache\Castellano(resub).dwg